

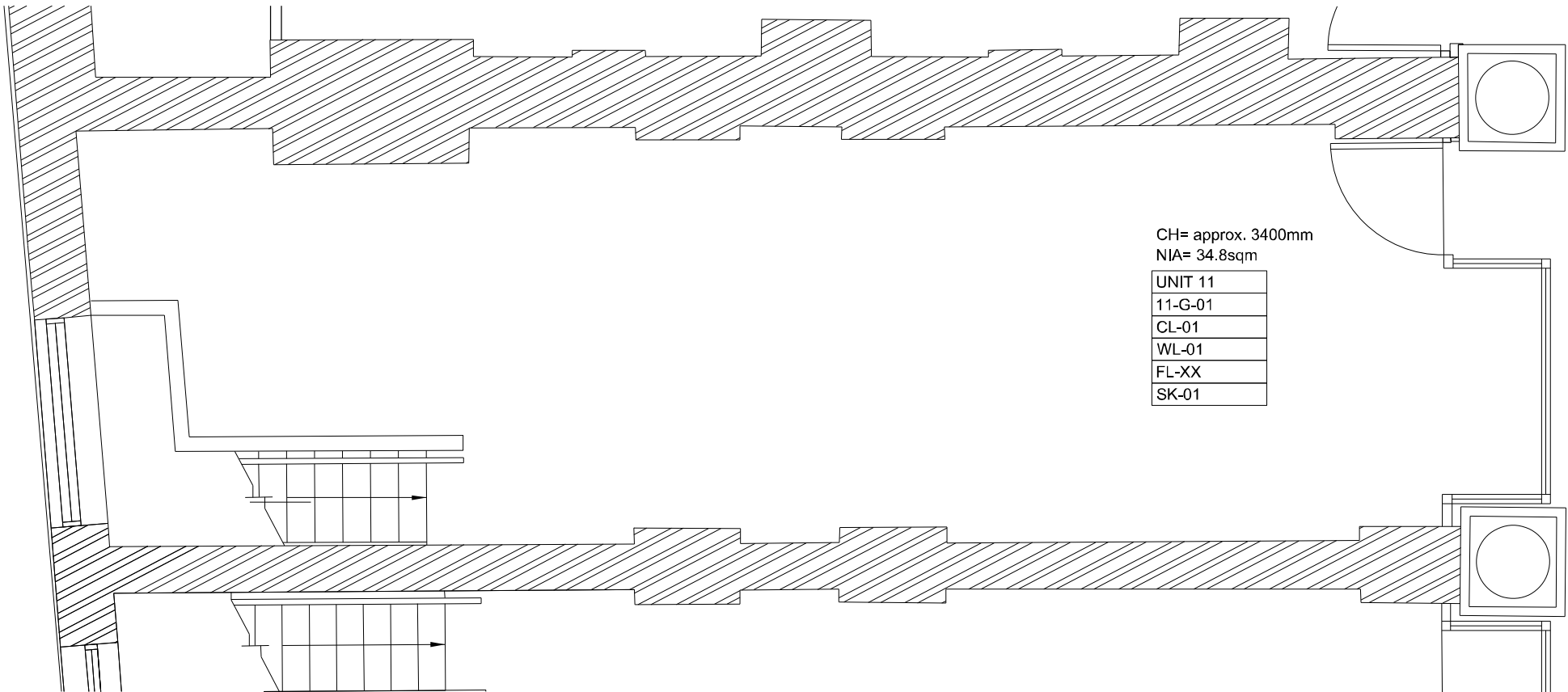
DO NOT SCALE THIS DRAWING

CONTRACTORS ARE TO CHECK ALL DIMENSIONS PRIOR TO COMMENCEMENT ON SITE AND NOTIFY THE ARCHITECT OF ANY ERRORS, OMISSIONS, OR DISCREPANCIES.

TATE & HINDLE DESIGN LIMITED RETAIN COPYRIGHT OF THIS DRAWING. IT MAY NOT BE COPIED, ALTERED OR REPRODUCED IN ANY WAY WITHOUT THEIR WRITTEN AUTHORITY.



To be read in conjunction  
with 8900 P08 003  
Finishes Schedule



00	FIRST ISSUE	31.03.11
rev	description	date

status

FOR PLANNING

client

HOLBORN LINKS

project

SICILIAN AVENUE

drawing

PROPOSED FINISHES  
GROUND UNIT 11  
SICILIAN AVENUE

scale	drawn	checked	date
1:50@A3	OH	-	17-02-11

project no.	drg	revision
8900	(40)200	00

**TATE HINDLE**  
ARCHITECTURE + DESIGN

1 Lindsey Street, Smithfield, London EC1A 9HP T 020 7332 4850  
mail@tatehindle.co.uk www.tatehindle.co.uk F 020 7332 4888  
© Tate and Hindle Design Limited