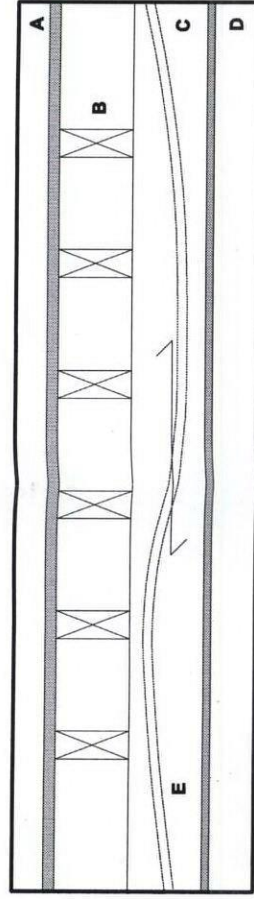
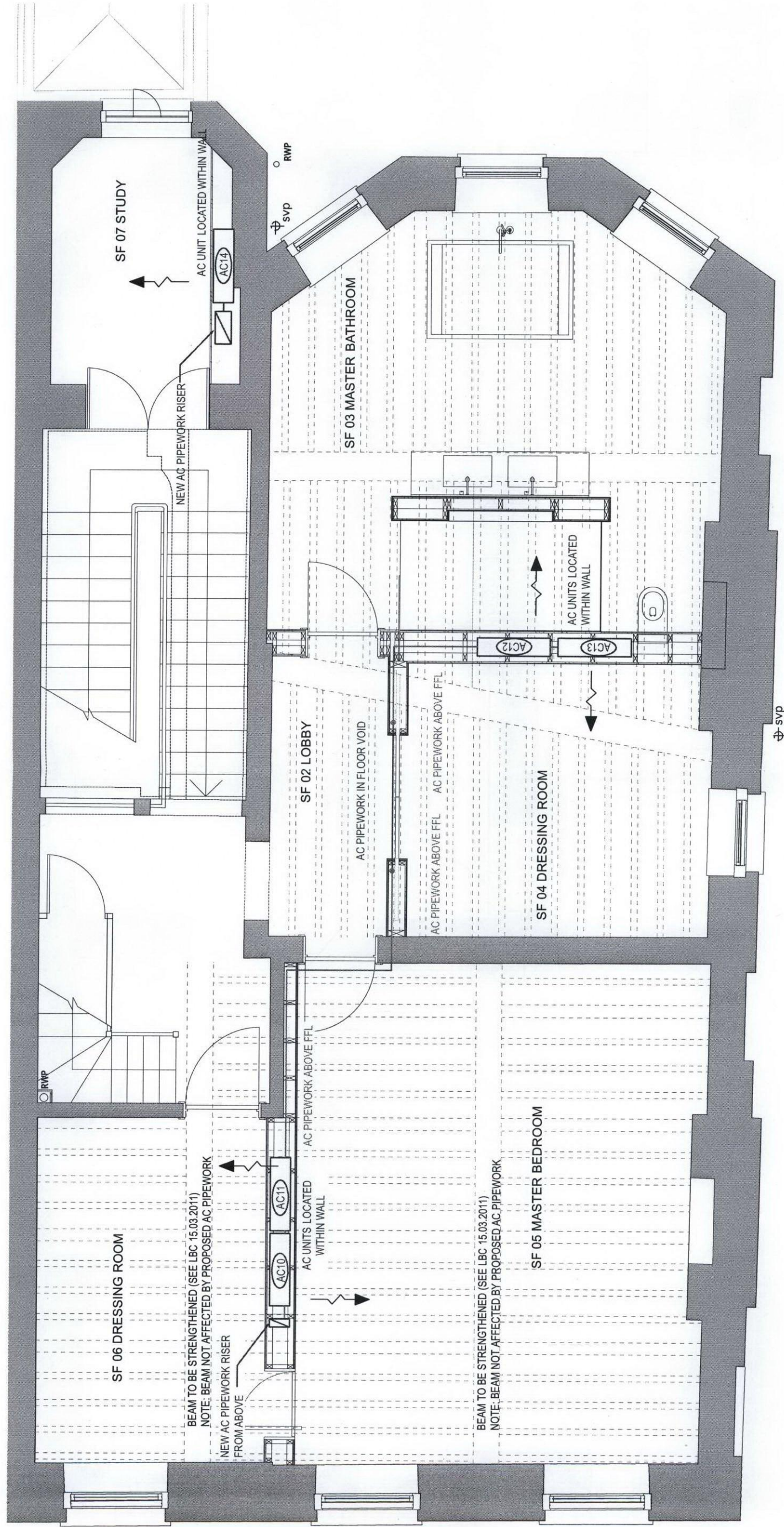


FLOOR BUILD UP 1 - FLEXIBLE AC PIPEWORK TO RUN BETWEEN FLOOR JOIST



FLOOR BUILD UP 2 - FLEXIBLE AC PIPEWORK TO RUN BETWEEN CEILING JOIST

- A SOLID TIMBER FLOORING
- B FLOORJOIST
- C CEILING JOIST
- D PLASTER CEILING
- E FLEXIBLE AC PIPEWORK



NOTE:

THE BRUSSUMER BEAMS THAT ARE TO BE STRENGTHENED ARE AT THE FRONT OF THE HOUSE AND NOT AFFECTED BY THE AC PIPEWORK INSTALLATION

Rev A - Floor joist added; Exact location of AC units and pipe route revised

Rev B - AC units 10, 11, 12 & 13 to be served from 3rd floor

Project	40 Bedford Square	Client	M. Wilner & R. Villiers	Date of First Issue	27.04.2011	Format	A3	Revision	B	Structural Engineer	The Courtyard - Unit 2a 44 Gloucester Avenue London NW1 8JD Tel. 020 7483 8360 Fax. 020 7483 8361 www.rundellassociates.com office@rundellassociates.com
Drawing Title	SECOND FLOOR - PROPOSED	Job No.	2904	Drawn by	HH	Scale	1:50	Date of latest Issue	09.05.2011	Services Engineer	MRJ RUNDELL + ASSOCIATES LTD Architecture & Design Services
		Drawing No.	806.2	Checked by	DC					Quantity Surveyor	

DO NOT SCALE FROM THE DRAWING. ALL DIMENSIONS ARE IN MM, ARE INDICATIVE ONLY & MUST BE CONFIRMED ON SITE. © MRJ RUNDELL & ASSOCIATES LTD