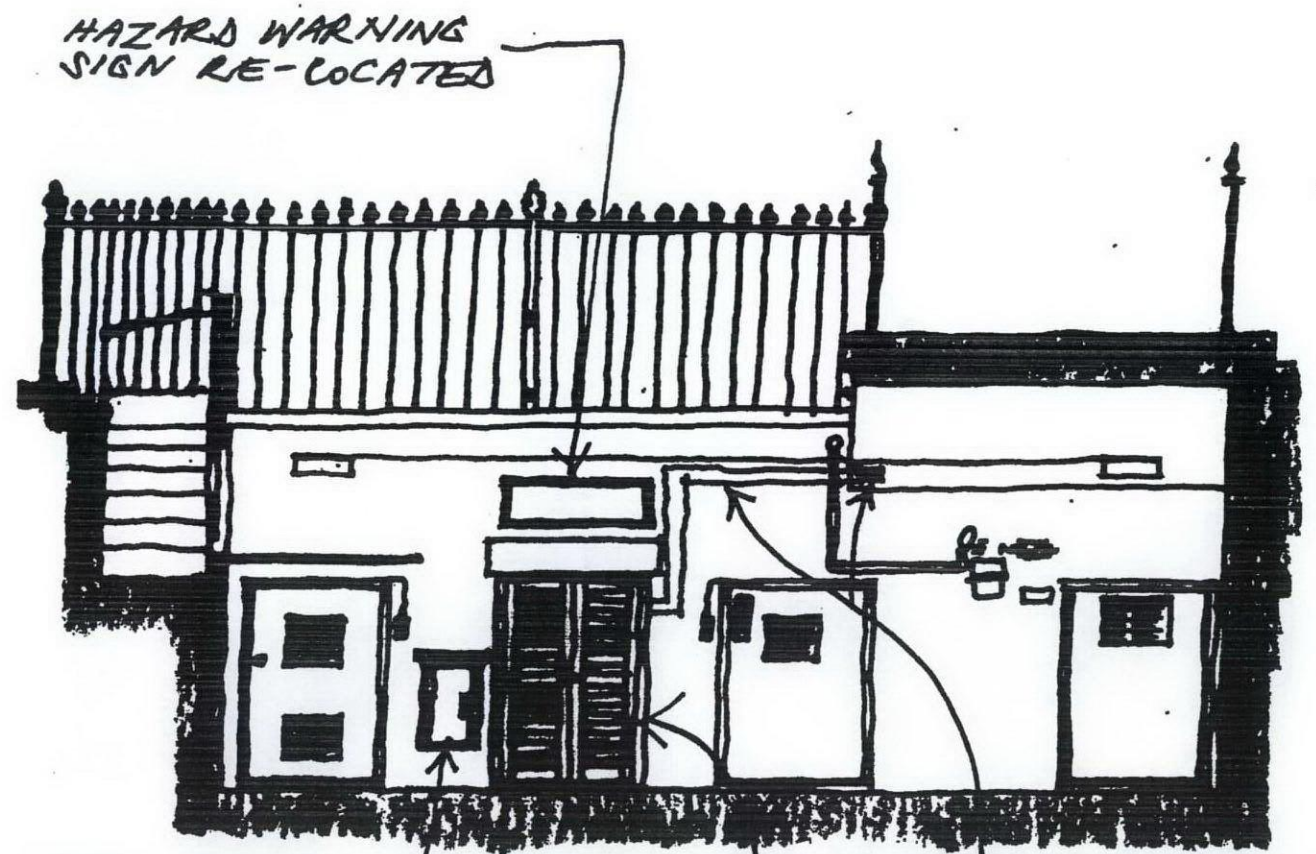


ELEVATION OF PROPOSED NEW POSITION FOR CONDENSERS WITHIN ENCLOSURE



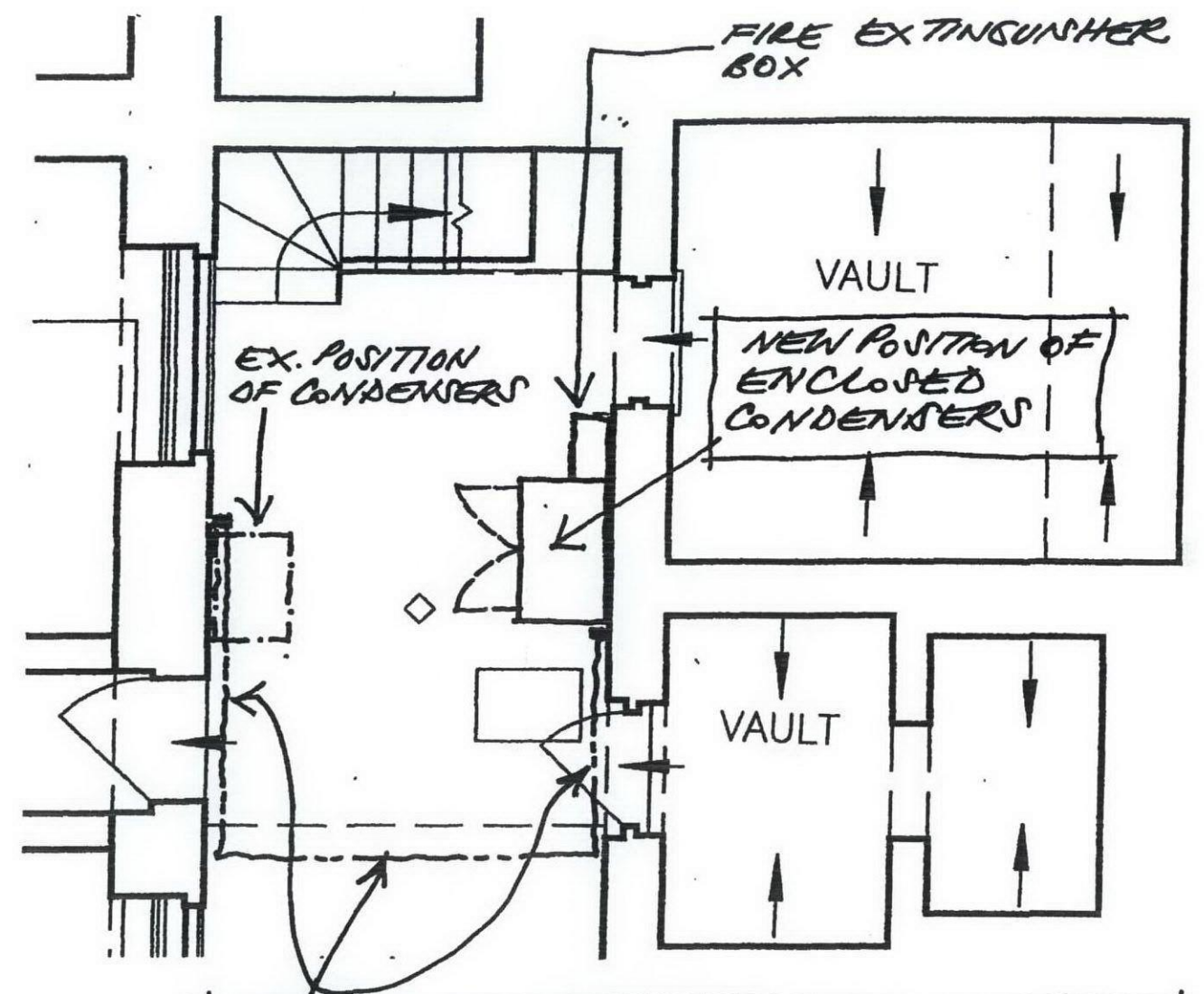
HAZARD WARNING SIGN RE-LOCATED

FIRE EXTINGUISHER BOX RE-LOCATED

CONTAINMENT CARRYING SERVICES TO UNITS

NEW ENCLOSURE OVER CONDENSERS PAINTED TO MATCH WALL COLOUR

PART PLAN SHOWING NEW POSITION OF ENCLOSED CONDENSERS & SERVICE ROUTE



FIRE EXTINGUISHER BOX

VAULT

EX. POSITION OF CONDENSERS

NEW POSITION OF ENCLOSED CONDENSERS

VAULT

NEW SERVICE ROUTE RUNNING ABOVE DOOR HEIGHT & ALONG UNDERSIDE OF ARCH TO NEW POSITION ALL WITHIN CONTAINMENT PAINTED TO MATCH WALL COLOUR

Relocation of 2 Number Condensers within the Area to 8 Montague Street WC1

RELOCATED KIT: ELEVATION AND PART PLAN 1:50