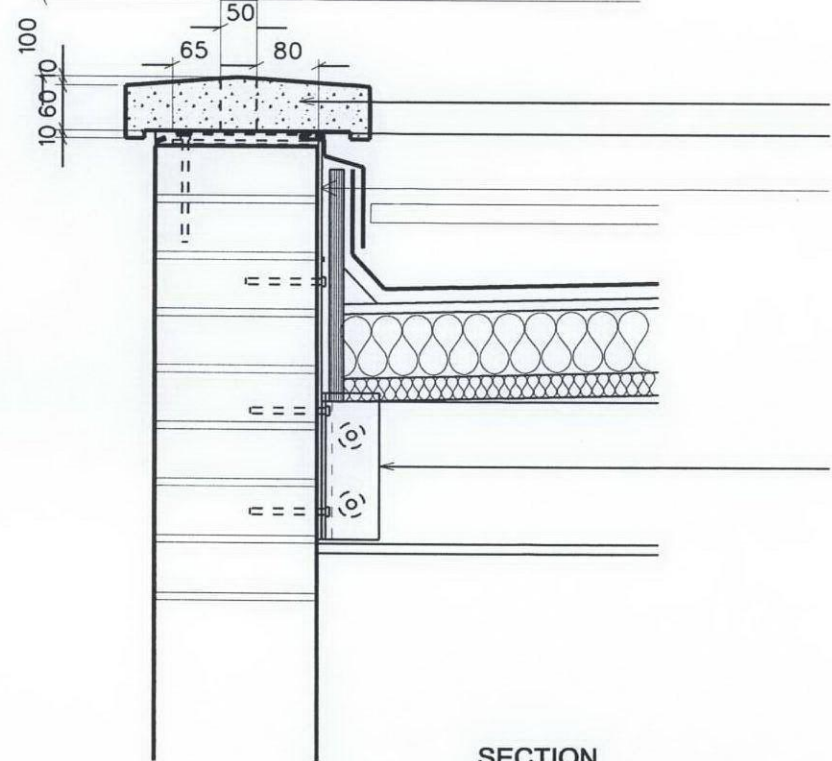


30 x 50 SHS 3.2 handrail
@ max. 1200mm centres

20mm diam. verticals
@ 120mm centres

50 x 50 SHS 3.2 posts
@ max. 1200mm centres
welded to the plate

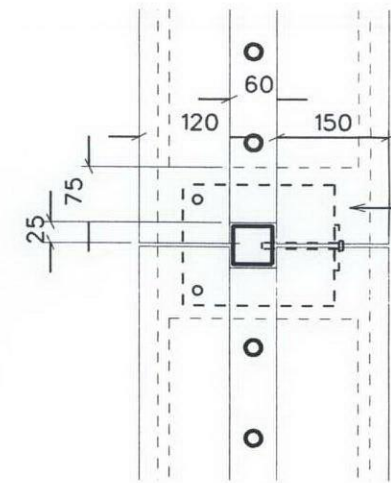


Double throated stone coping
DPC

160 x 195 x 12mm plate
fixed with 2no. 12mm resin anchors
welded to
60 x 600mm x 6mm strap
fixed with 3no. 12mm resin anchors.

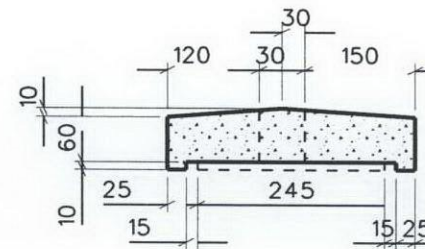
70 x 70 x 6 RSA connecting angle
fixed to side of roof joists with 2no. M12 coach screws
& 50 diam tooth plate connectors between timber & steel

SECTION



100wide x 15 deep
recess on the underside
to take the fixing plate

PLAN



COPING

ALL STEELWORK TO BE GALVANISED AFTER FABRICATION

SEQUENCE :-

- 1 Complete brickwork
- 2 Fix post/plate/strap assemblies
- 3 Construct roof
- 4 Fix DPC
- 5 Fix copings
- 6 Fix handrail/bar/bottom rail assemblies

TERRACE BALUSTRADE DETAILS
67 GRAY'S INN ROAD
LONDON WC1X 8TL

BRILL ■ OWEN CHARTERED ARCHITECTS Grove House, 2B Lichfield Grove, London N3 2JP Telephone: 020 8349 0037 Fax: 020 8349 0092 E-mail: architects@brillowen.co.uk		SCALE	1:10
		DATE	10 Sep
		DRG. NO.	10/725/76