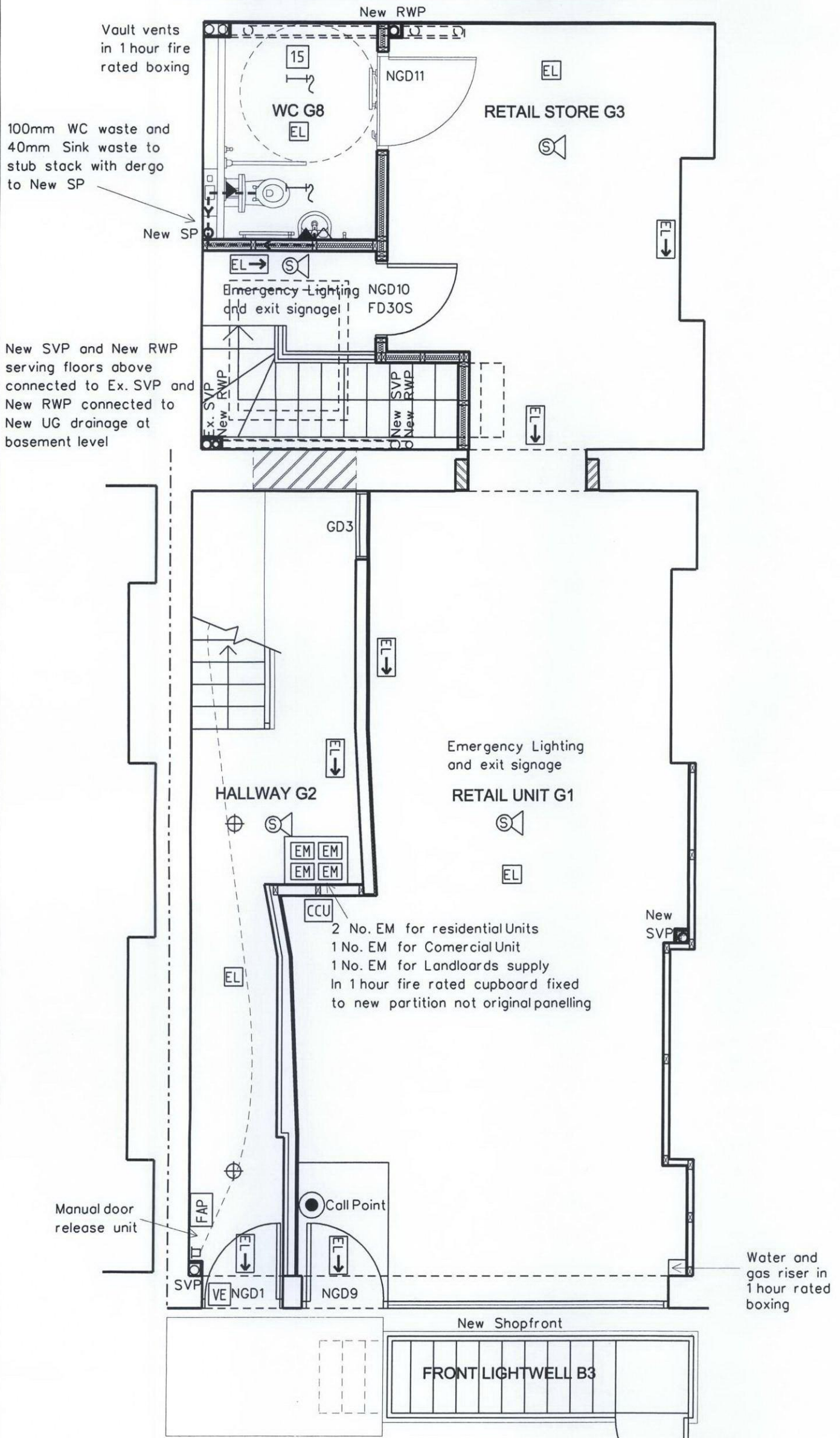


First floor roof drainage outlets connected at high level behind 1 hour fire rated boxing to new RWP connected to UG drainage system at Basement level



**Ground Floor Services**  
**67 Gray's Inn Road**  
**London WC1X 8TL**

Emergency Lighting to 5266-1:2005 and exit signage throughout commercial premises and common stair  
 Electrical locks for video entry to front door of residential units to open on operation of the fire alarm system, loss of power and activation of the manual door release unit

<b>BRILL ■ OWEN</b> CHARTERED ARCHITECTS Grove House, 2B Lichfield Grove, London N3 2JP Telephone: 020 8349 0037 Fax: 020 8349 0092 E-mail: architects@brillowen.co.uk		SCALE	1:50
		DATE	Nov 10
		DRAWN	DJC
		DRG.NO.	10/725/51