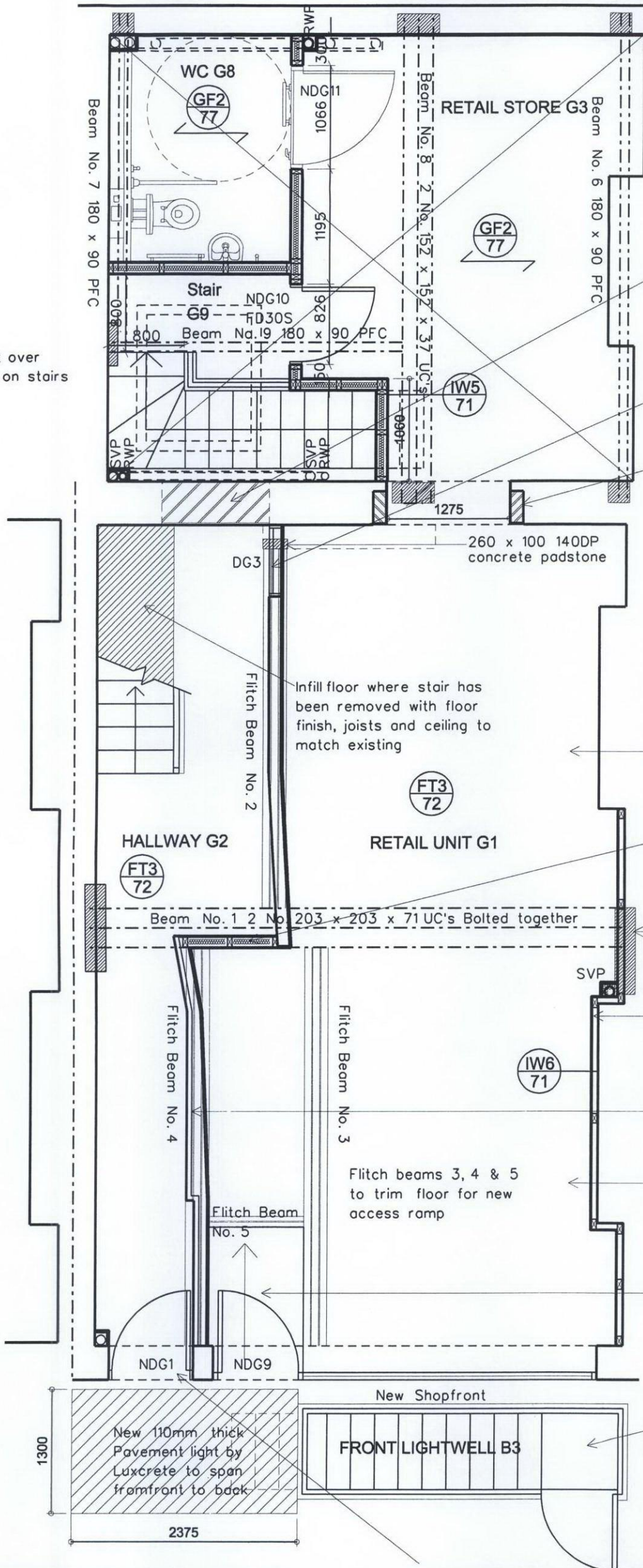


Apply 2 coat Vandex BB75 applied waterproof tanking slurry to rear retaining wall by specialist linked to new DPM.
Plaster walls after slurry has cured and obtain insurance backed warranty



New 150mm beam and block floor as structural engineers specification on drawing 724809/SK111 in G3, G8 & G9 to span from Beams No. 7 180 x 90 PFC on 225 SQ x 140 DP conc padstones either side of
Beam No. 8 2 No. 152 x 152 x 37 UC's on 440 x 215 x 215 conc padstones all to be clear above vaults and independent of vaults so as not to transfer any load onto the vaults

Fully tooth and bond new brickwork into existing to infill door opening. Plaster with 2 coat 13mm plaster each side to give a smooth and level finish

Fix GD3 shut, point with intumescent paint, Fit Finesse acoustic, smoke and fire strips rebated in to frame sides, head and bottom of door. Fix 2 layers of 12.5mm Gyproc Fire line across in front on retail side on timber studs

Fully tooth and bond new brickwork into existing door jambs to line through flush. Plaster with 2 coat 13mm plaster

Fitch Beams No. 2, 3 and 4 in floor zone
3 No. 220 x 75 x C24 joists
with 2 No. 170 x 10 MS plates bolted between

Fitch Beam No. 5 in floor zone
2 No. 225 x 50 x C16 joists
with 2 No. 170 x 10 MS plates bolted between

Line soffit of stair with
two layers of 12.5mm Gyproc Fireline and skim

Strengthen existing hearths as structural engineers drawing 724809/SK106

Infill Ex. opening with 12.5mm Gyproc Fireline and skim either side of 50 x 100mm timber studs with 50mm Isowool between

Beam No. 12 No. 202 x 203 x 71 UC's bolted together in floor zone bearing on new 900 x 215 x 215 conc padstones. To each end of beam 1 allow to rebuild brickwork below padstone: 4 courses high x 900 as structural engineers specification.

Build full height independent lining in front of tiles to be retained of 50 x 50 MF studs with 50 x 50 head and sole plates lined with 12.5mm Gyproc wallboard and skim

Line retail side of partition between G1 and G2 with two layers of 12.5mm Gyproc Fireline and skim on timber studs

Strengthen existing hearths as structural engineers drawing 724809/SK106

Trim floor joists with new fitch beams to form new Access ramp of 25mm WBP ply on 50 x 100 joists to comply with Approved Document part M with 1:12 gradient

New cast Iron and Gavanised mild steel stairs in lightwell from ground to basement with cast iron railings and sliding access gate. For details see stair layouts and balustrade details

Ground Floor Construction 67 Gray's Inn Road London WC1X 8TL

Allow 2500 PC Sum for supply and installation of a new pavement light from Luxcrete Ltd allow for all preparations of opening and finishing

New entrance door and frame set with etched fan light over for details see door layout drawing

Ground, 1st, 2nd and 3rd floor joists strengthened at every third point of span with full depth noggin as structural engineers drawings 724809/BF/P1 and SK104

BRILL ■ OWEN
CHARTERED ARCHITECTS
Grove House, 2B Lichfield Grove, London N3 2JP
Telephone: 020 8349 0037 Fax: 020 8349 0092
E-mail: architects@brillowen.co.uk

SCALE	1:50	
DATE	Nov 10	DRAWN
		DJC
DRG.NO.	10/725/31	