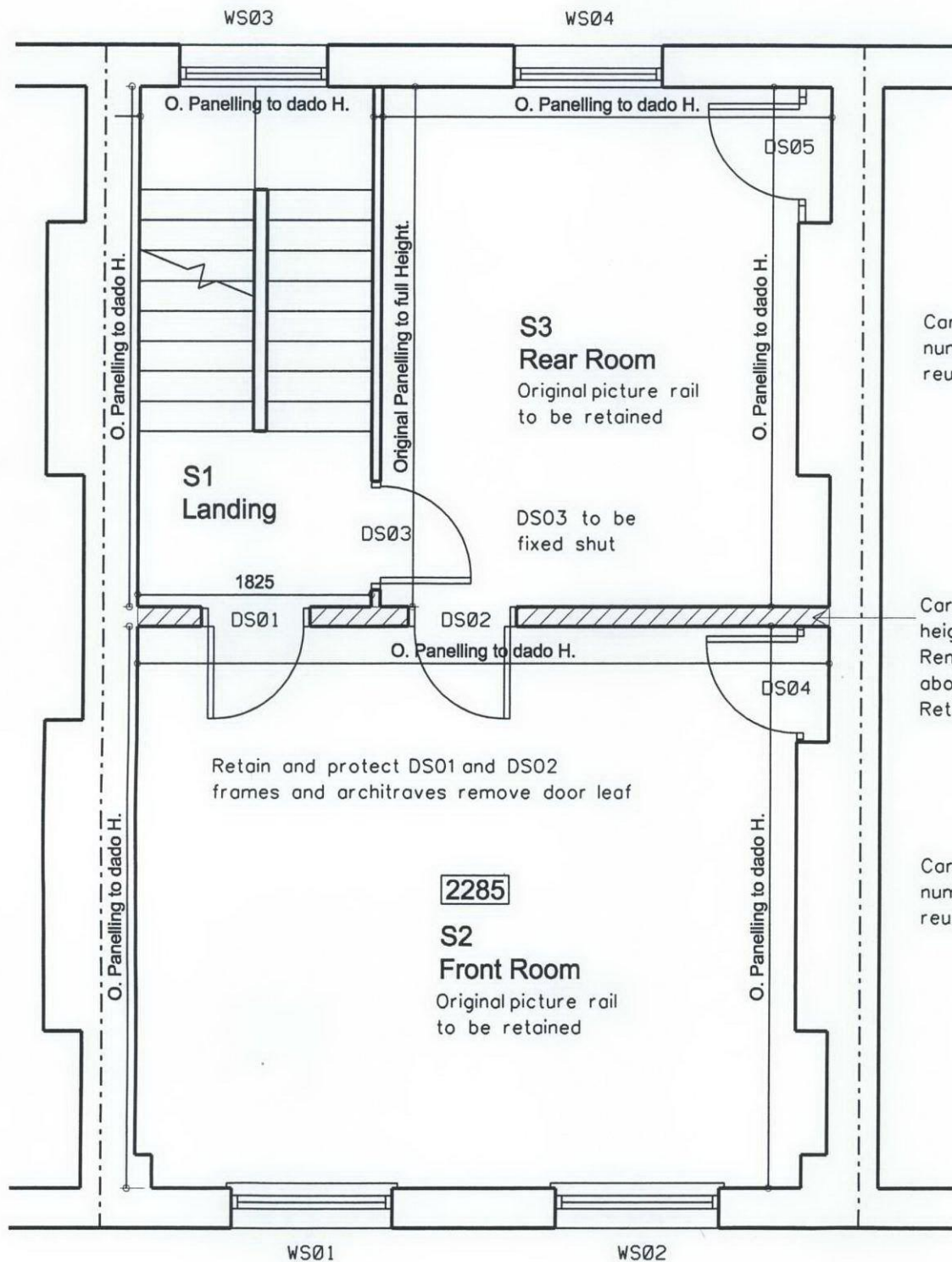


Support structure over WS04 and
replace lintel with Catnic CN71A



Carefully remove existing timber floor boards,
number and set aside for refurbishment and
reuse.

Carefully remove and set aside existing panelling up to dado
height to be refixed in existing locations
Remove existing lath and plaster from both sides of wall
abover dado.
Retain Picture rail to be refixed in existing location

Carefully remove existing timber floor boards,
number and set aside for refurbishment and
reuse.

Retain and protect DS01 and DS02
frames and architraves remove door leaf

Support structure over and replace wall
plates front and back. Allow for 30% new
beam ends to be spliced on to existing as
structural engineers drawings and specification

Support structure over WS01 and WS02
and replace lintels to structural engineers
drawings and specification.

Carefully chase brickwork out at all four
corners to allow for 330 x 100 x 65 RC
concrete elbows 2 courses above floor and
below ceiling and at 600 cc between all to
structural engineers drawing 724809/SK100

Second Floor Demolitions 67 Gray's Inn Road London WC1X 8TL

BRILL ■ OWEN CHARTERED ARCHITECTS Grove House, 2B Lichfield Grove, London N3 2JP Telephone: 020 8349 0037 Fax: 020 8349 0092 E-mail: architects@brillowen.co.uk		SCALE	1:50
		DATE	Nov 10
		DR. IWN	DJC
		DRG. NO.	10/725/23