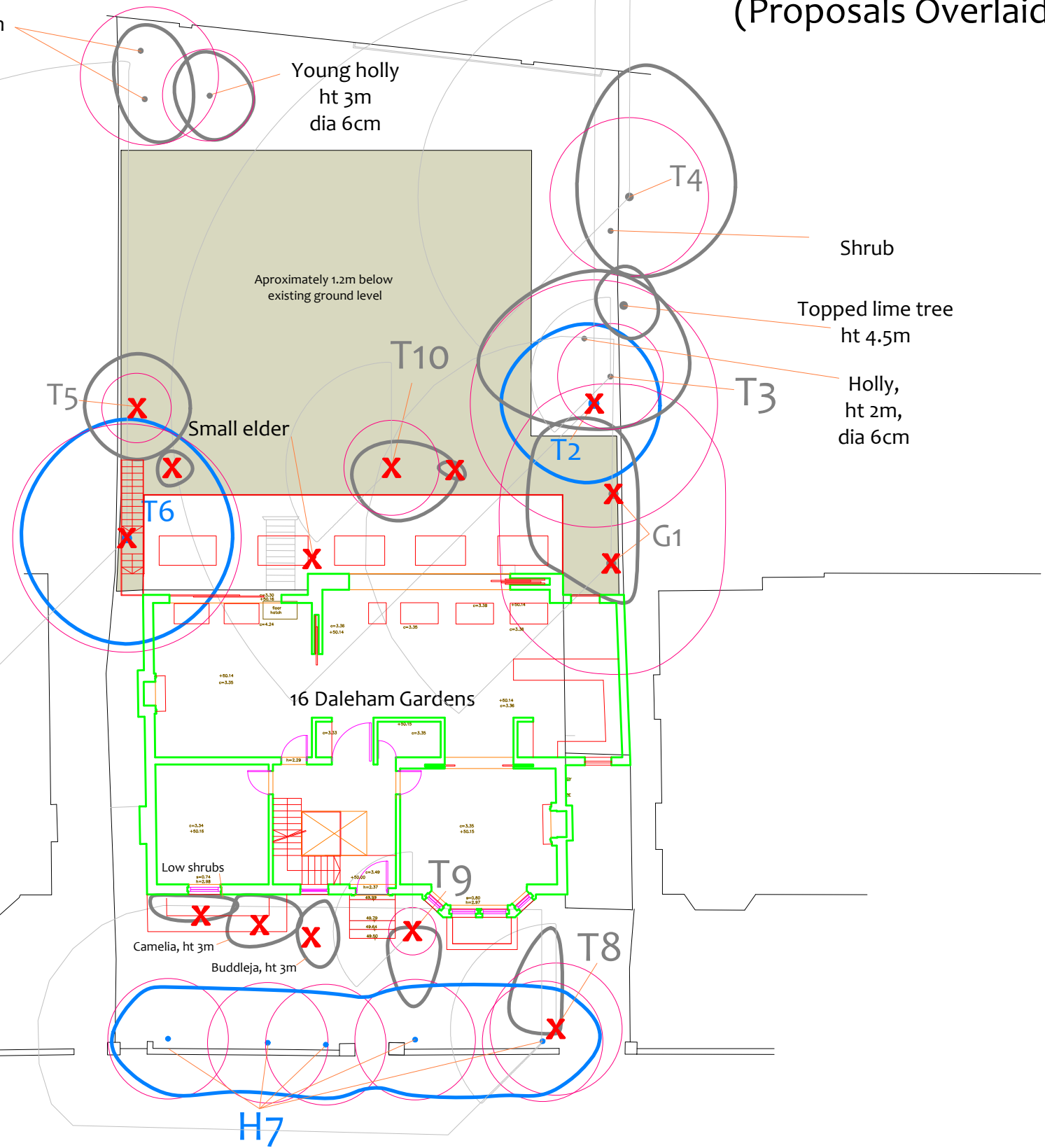


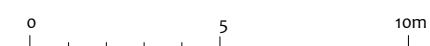
Tree Removal Plan (Proposals Overlaid)



Poorly formed, low quality laburnum trees dia 15cm



<p>CROWN Arboricultural Consultants 01422 316660</p>	Site: 16 Daleham Gardens		BS 5837 Shade Pattern		Tree to be removed
	Ref No: 08475C/TRP		BS 5837 Root Protection Area		Stem & canopy of Category A tree
	Scale: 1:200	T1	Tree number 1		Stem & canopy of Category B tree
	Paper Size: A3	G2	Group number 2		Stem & canopy of Category C tree
		H3	Hedge number 3		Stem & canopy of Category R tree



BS 5837 Retention Categories

- Category A:**
Trees of high quality and amenity. Usually mature trees with a significant life expectancy which would enhance any development. Retention of these trees is strongly encouraged.
- Category B:**
Trees of moderate quality and amenity. Usually mature trees, or younger trees with exceptional form. Retention of these trees is desirable though the removal of occasional specimens may be acceptable.
- Category C:**
Trees of low quality and amenity. The removal of these trees should generally be seen as acceptable in order to facilitate development.
- Category R:**
Trees whose structural condition is such that they should be removed if development is to proceed.