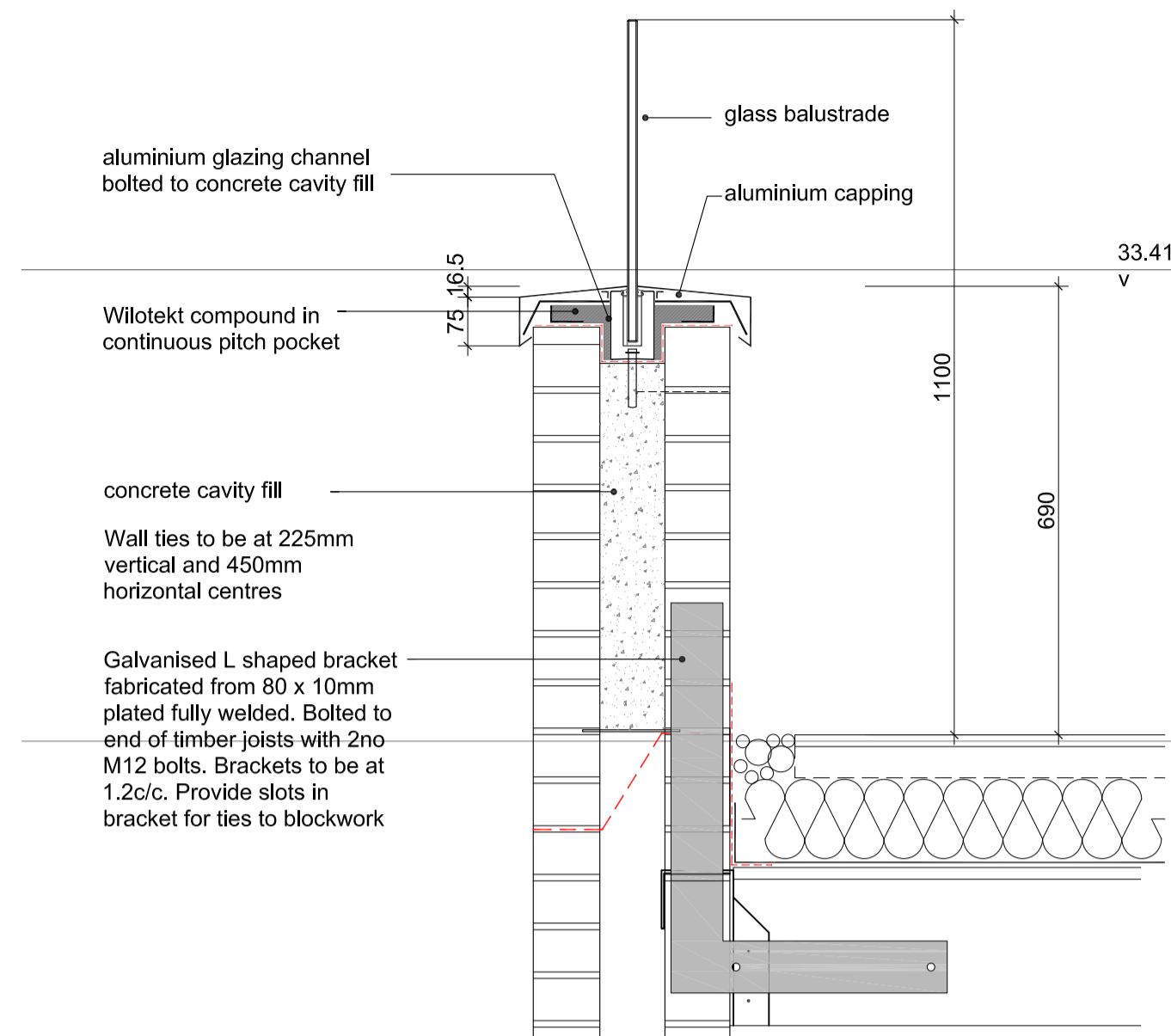
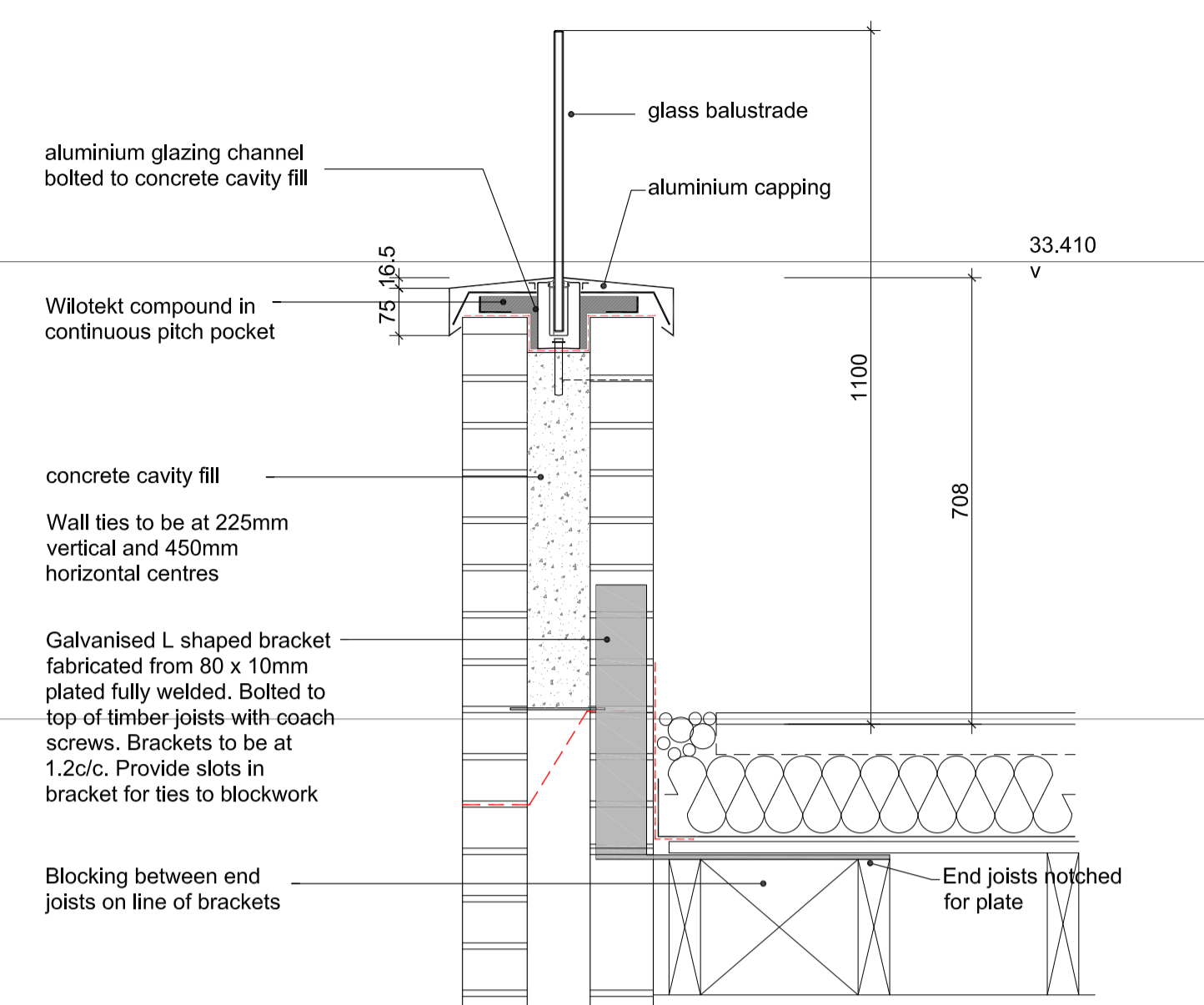


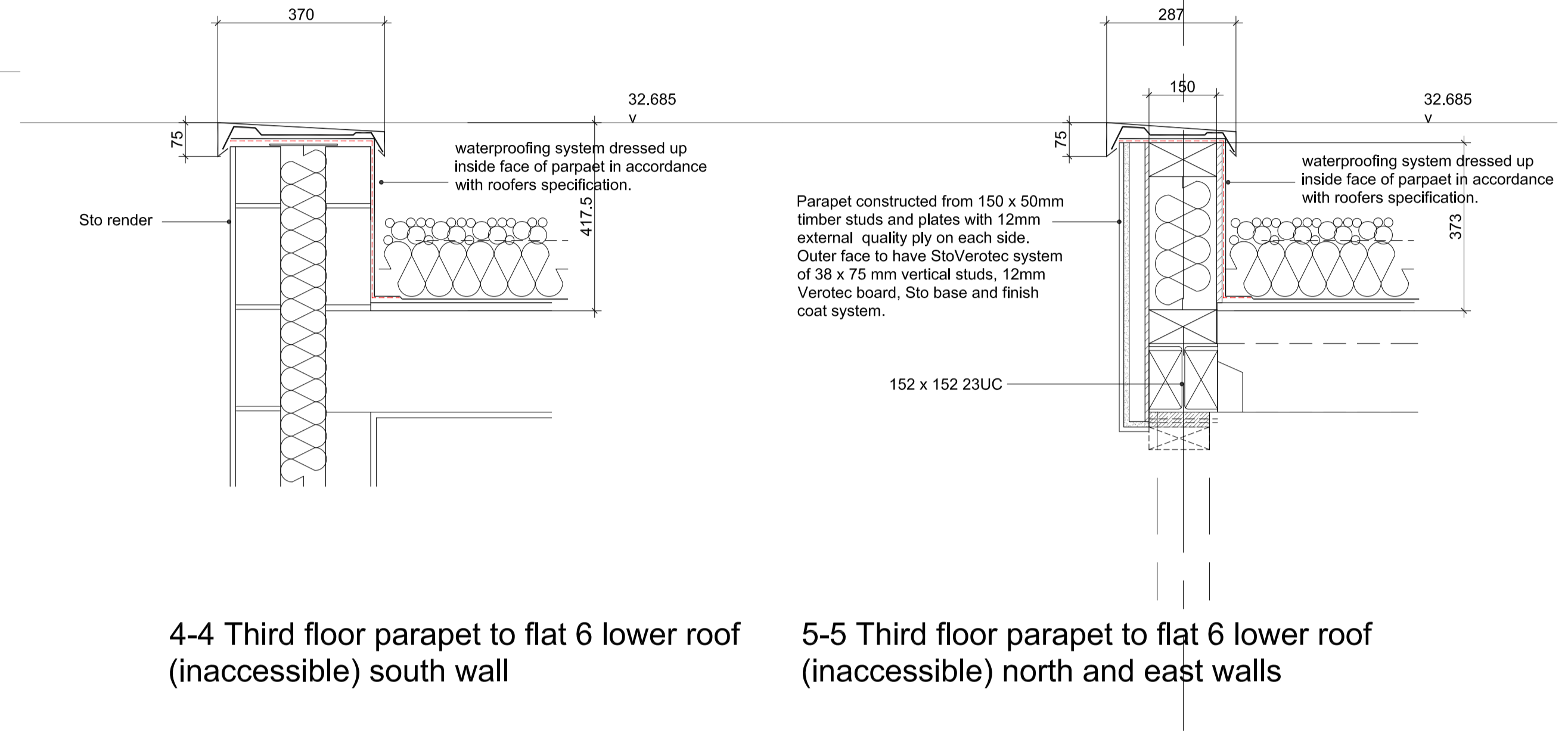
This drawing is to be read in conjunction with the structural engineers drawings,



3-3 Third floor parapet to flat 6 upper roof/terrace right-angle to joists

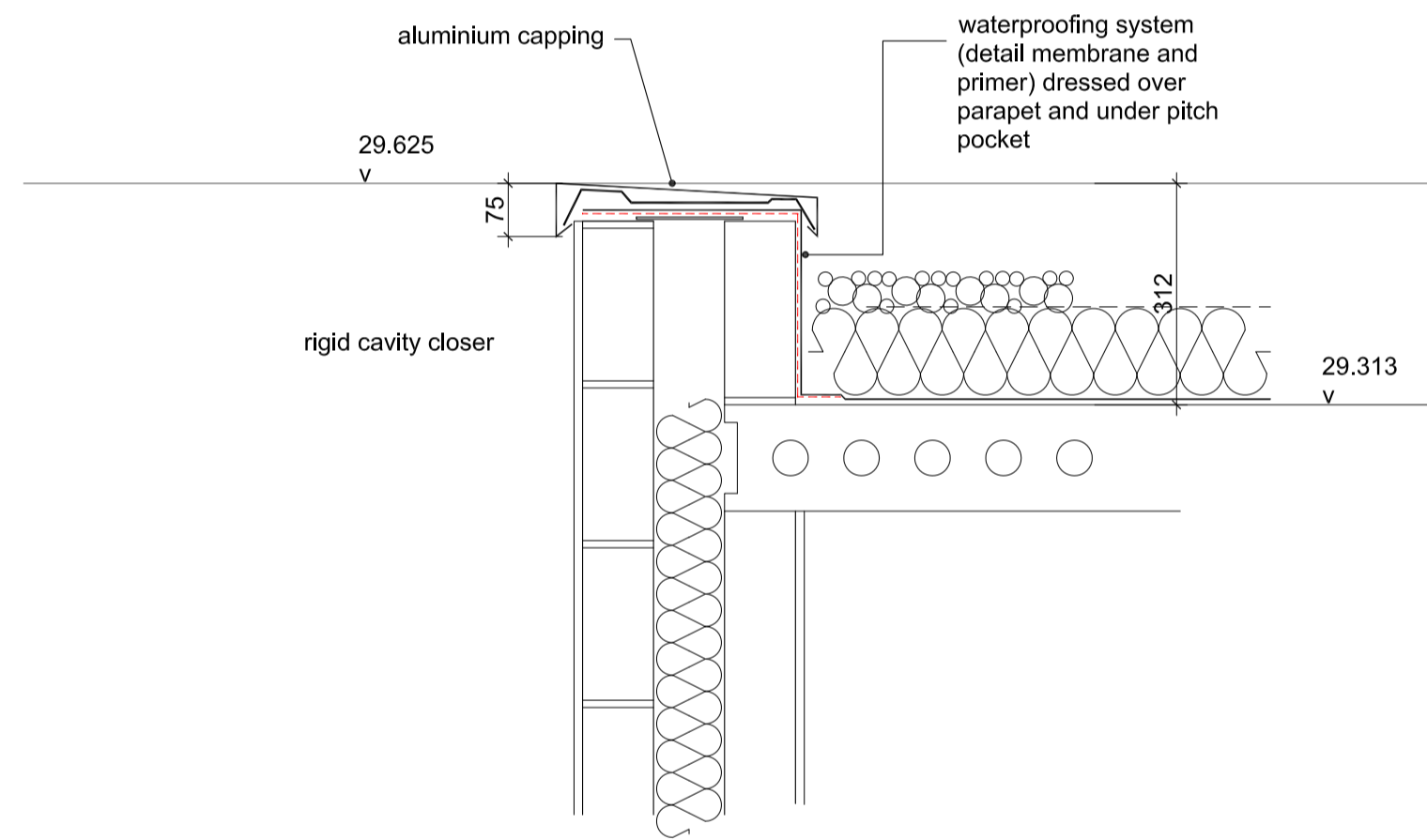


6-6 Third floor parapet to flat 6 upper roof/terrace paralalled to joists

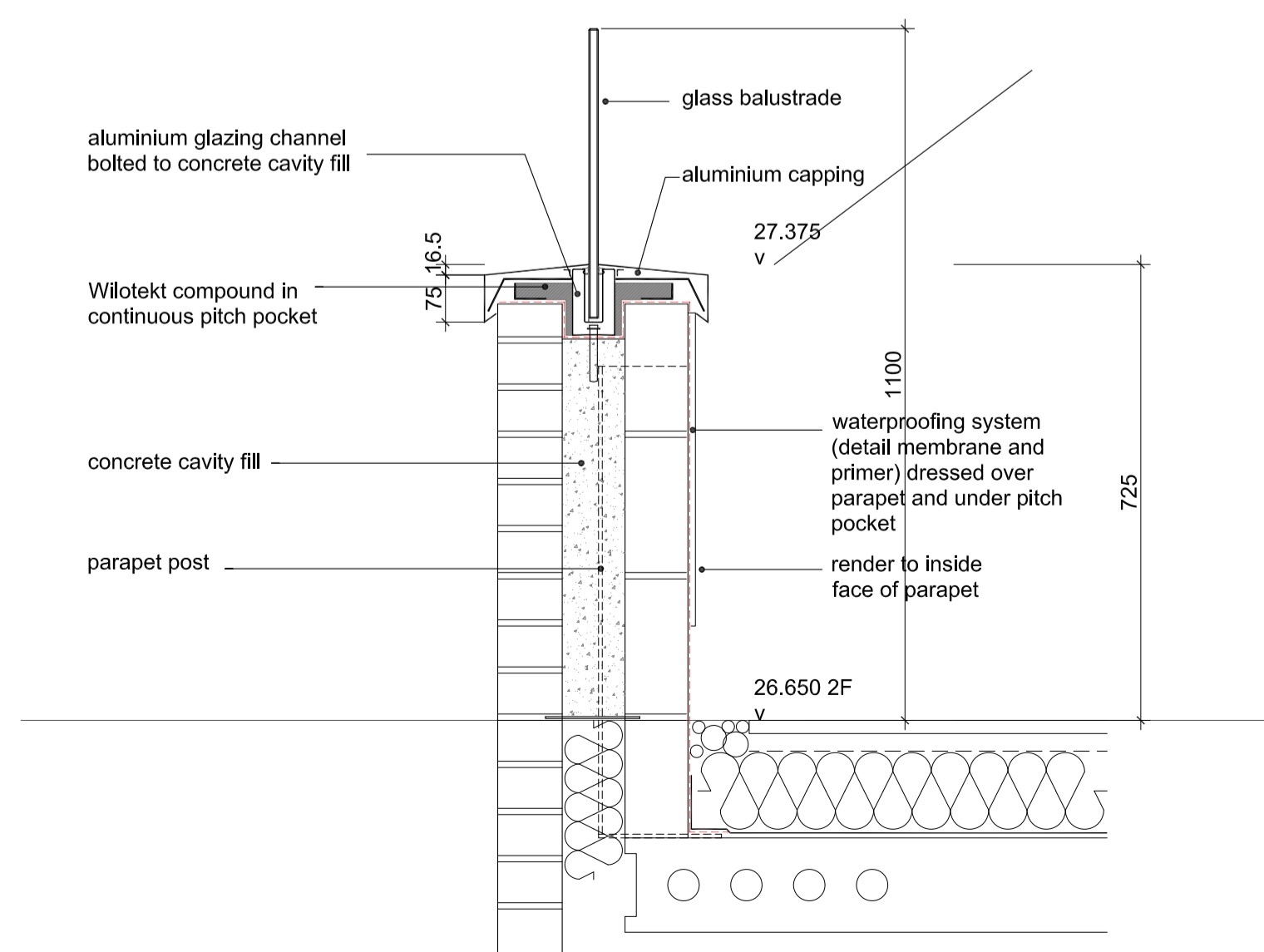


4-4 Third floor parapet to flat 6 lower roof (inaccessible) south wall

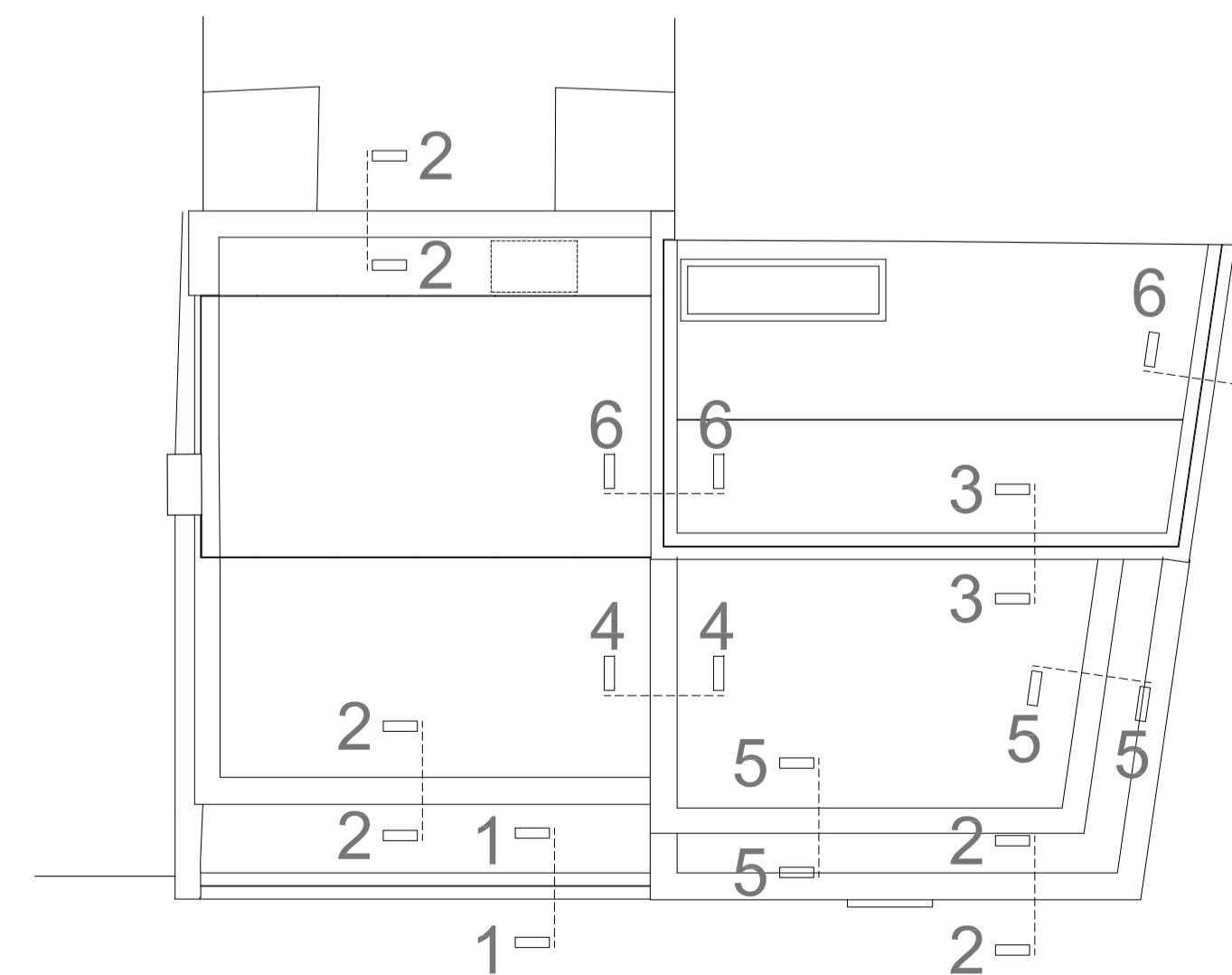
5-5 Third floor parapet to flat 6 lower roof (inaccessible) north and east walls



2-2 Third floor parapet to roof over flat 4 and third floor parapet to flat 6 lower roof (inaccessible)



1-1 Second floor parapet to flat 4 terrace



Rev	Date	Revision note	Drawn by:
A	19/07/2011	Details 5-5 & 6-6 added	AP
-	19/07/2011	Initial Issue	-

**a+d studio**  
4 The Dell, Oakham  
Rutland, LE15 6JG  
tel: + 44(0)1572 720 089  
web: www.apludstudio.co.uk

Project  
**King's Mews**  
London WC1N 2JF

Drawing title  
**Parapet and Balustrades**

Scale	Date	Drawn	Checked
1:10	14.07.2011	ap	
Project no.	Drawing no.	Revision	
0526	5030	A	