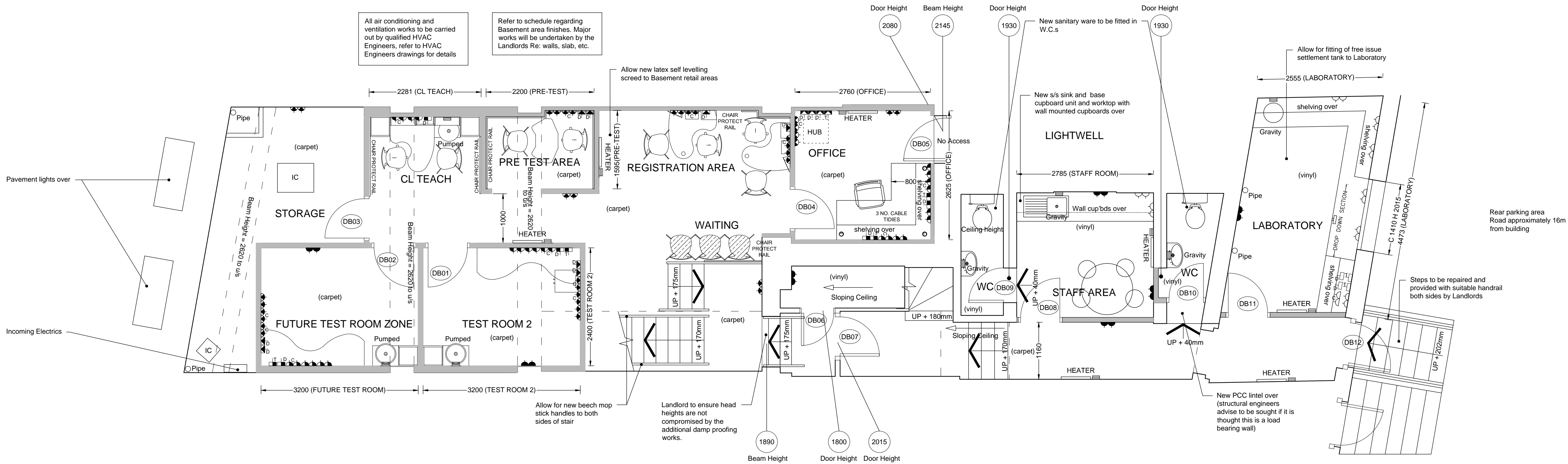


PROPOSED GROUND FLOOR PLAN



PROPOSED BASEMENT FLOOR PLAN

POWER FITTINGS		
SINGLE	DOUBLE	DESCRIPTION
		SWITCHED SOCKET Mounted slightly above plinth (105mm AFFL)
		SWITCHED SOCKET Mounted at low level (400mm AFFL)
		SWITCHED SOCKET Mounted below worktop level (600mm AFFL)
		SWITCHED SOCKET Mounted in trunking (1290mm AFFL)
		SWITCHED SOCKET Mounted at high level (1840mm AFFL)
		CLEAN SWITCHED SOCKET Mounted slightly above plinth (105mm AFFL)
		CLEAN SWITCHED SOCKET Mounted at low level (400mm AFFL)
		CLEAN SWITCHED SOCKET Mounted below worktop level (600mm AFFL)
		CLEAN SWITCHED SOCKET Mounted in trunking (1290mm AFFL)
		CLEAN SWITCHED SOCKET Mounted at high level (1840mm AFFL)
		SWITCHED SOCKET Mounted at ceiling level
		HIGH LEVEL MULTI-POINT HEATER
		WALL HEATER
		OVER DOOR HEATER
		SWITCHED FUSED SPUR WITH INDICATOR LIGHT
		UN-SWITCHED FUSED SPUR WITH INDICATOR LIGHT
		KLUCK SOCKET MOUNTED ON CEILING

NOTES - SPECSAVERS DRAWINGS TO BE READ IN CONJUNCTION WITH THE SCHEDULE OF WORKS		
AIR CONDITIONING & VENTILATION	ELECTRICAL INSTALLATIONS	DEMOLITION & STRIP-OUT
MECHANICAL VENTILATION TO BE DESIGNED & INSTALLED BY AIR CONDITIONING CONTRACTOR REFER TO AC CONTRACTORS DRAWINGS FOR ALL TECHNICAL NOTES AND DETAILING.	PROVIDE AND INSTALL ALL NEW ELECTRICAL FITTINGS AS SPECIFIED ON LEGEND, AND TO COMPLY WITH THE 17TH EDITION OF THE INSTITUTE OF ELECTRICAL ENGINEERS REGULATIONS, THE LOCAL ELECTRICITY BOARD REQUIREMENTS AND ALL RELEVANT BRITISH STANDARDS, CODES OF PRACTICE, CIBSE PUBLICATIONS AND APPROVED DOCUMENT L2B. CONTRACTOR TO PROVIDE THE RELEVANT CERTIFICATION UPON COMPLETION. ALLOW FOR FINAL LOCATION OF MULTIPOINT HEATERS TO BE DIRECTED ON SITE.	REMOVE ALL WALLS WHERE NECESSARY AS INDICATED ON PLAN AND CART AWAY DEBRIS FROM SITE. CONTRACTOR TO ALLOW FOR MAKING GOOD OF ALL AREAS PRIOR TO REDECORATION.
PLUMBING REQUIREMENTS	EMERGENCY PROVISIONS	
WORKS APPLICABLE TO GROUND FLOOR NEW TEST ROOM, BASEMENT FLOOR CL TEACH, TEST ROOMS, STAFF AREA, LABORATORY, WATER UNITS & W.C.S.	- ALL FIRE EXIT SIGNAGE TO BE IN ACCORDANCE WITH B.S 5499 PART 1. - ALL EMERGENCY LIGHTING TO BE IN ACCORDANCE WITH B.S 5266 PART 1. - ALL AUTOMATIC FIRE DETECTION TO BE IN ACCORDANCE WITH B.S 5839 PART 1 (2002). - ALL SAFETY GLAZING TO COMPLY WITH B.S 6206 AND B.S 6262. - ALL WORK TO COMPLY IN ACCORDANCE WITH THE APPLICABLE LOCAL REGULATIONS, STANDARDS AND PUBLICATIONS.	
STRUCTURAL ALTERATIONS		
ANY STRUCTURAL ALTERATIONS, NEW LOAD BEARING ELEMENTS AND REMOVAL OF WALLS ETC., TO BE CARRIED OUT IN STRICT ACCORDANCE WITH STRUCTURAL ENGINEERS DETAILS AND CALCULATION SHEETS.		

DOOR SCHEDULE - TO BE READ IN CONJUNCTION WITH SPEC. MANUAL									
DOOR SPECIFICATION					HARDWARE				
NO.	DOOR FINISH	DOOR WIDTH	DOOR HEIGHT	FIRE RATING	VISION PANELS	DIGI LOCK	DOOR CLOSE	FIRE DOOR	HOLD OPEN
DB01	GREY	826 mm	1926 mm	30 min	60 min	SNGL	DBLE		
DB02									
DB03									
DB04									
DB05									
DB06									
DB07									
DB08									
DB09									
DB10									
DB11									
DB12									

COMMUNICATION FITTINGS		
DATA	FAX	TEL
COMMUNICATION SOCKET Mounted slightly above plinth (105mm AFFL)		
COMMUNICATION SOCKET Mounted at low level (400mm AFFL)		
COMMUNICATION SOCKET Mounted below worktop level (600mm AFFL)		
COMMUNICATION SOCKET Mounted in trunking (1290mm AFFL)		
COMMUNICATION SOCKET Mounted at high level (1840mm AFFL)		

OTHER SYMBOLS	
	DOOR REF. NUMBER INDICATED ON DOOR SCHEDULE
	SUSPENDED CEILING HEIGHT INDICATED ON CEILING LAYOUT

WALL LEGEND	
	PARTITION OR WALL REMOVED
	EXISTING PARTITION OR WALL
	PROPOSED PARTITIONING
	PROPOSED PARTITIONING WITH COMPLIANT SOUND INSULATION
	PROPOSED HALF HEIGHT PARTITIONING (1400mm HIGH)

Schedules:

Frame Numbers 1068

Retail Area 116.8 sq/m - 1257.2 sq/ ft

Total Areas Gd. Fl. 72.3sq/m - 778.2 sq/ ft (retail 65.7 sq/m)
Basemt Fl. 112.3 sq/m - 1208.8 sq/ ft (retail 50.9 sq/m)

Notes:

Access Statement

These layouts have been drawn in accordance with the agreed Accessibility Statement Version 9.

Amendments:

Rev	Init.	Date	Description

Drawn By:

Platypus Limited

Design # Project Management Services

Tel: 07899 896 934 Fax: (01629) 581374

Ingledean House, 26 Imperial Road, Matlock Derbyshire, DE4 3NL

On Behalf Of:

Specsavers Optical Superstores

CAD Department, Business Development, Melrose House, 42 Dingwall Road, Croydon, Surrey. CR0 2NE. United Kingdom.

Tel: + 44 (0) 20 8760 7420
Fax: + 44 (0) 20 8760 7421
E-mail: _croydoncad@uk.specsavers.com
Specsavers Online: www.specsavers.com

Project:

Specsavers Opticians
171 Finchley Road
Swiss Cottage
London
NW3 6LB

Title:

Proposed Ground & Basement Floor Plans - General Arrangement, Power & Communications Layout

SWISS COTTAGE
New Store

PRODUCTION DRAWINGS

Drawn By:	Scale: 1:100@A3	Date: 15/08/2011
JS	1:50@A1	
Drawing Number:	1923/1011	Revision: -

Do not scale from this drawing. Dimensions to be checked on site