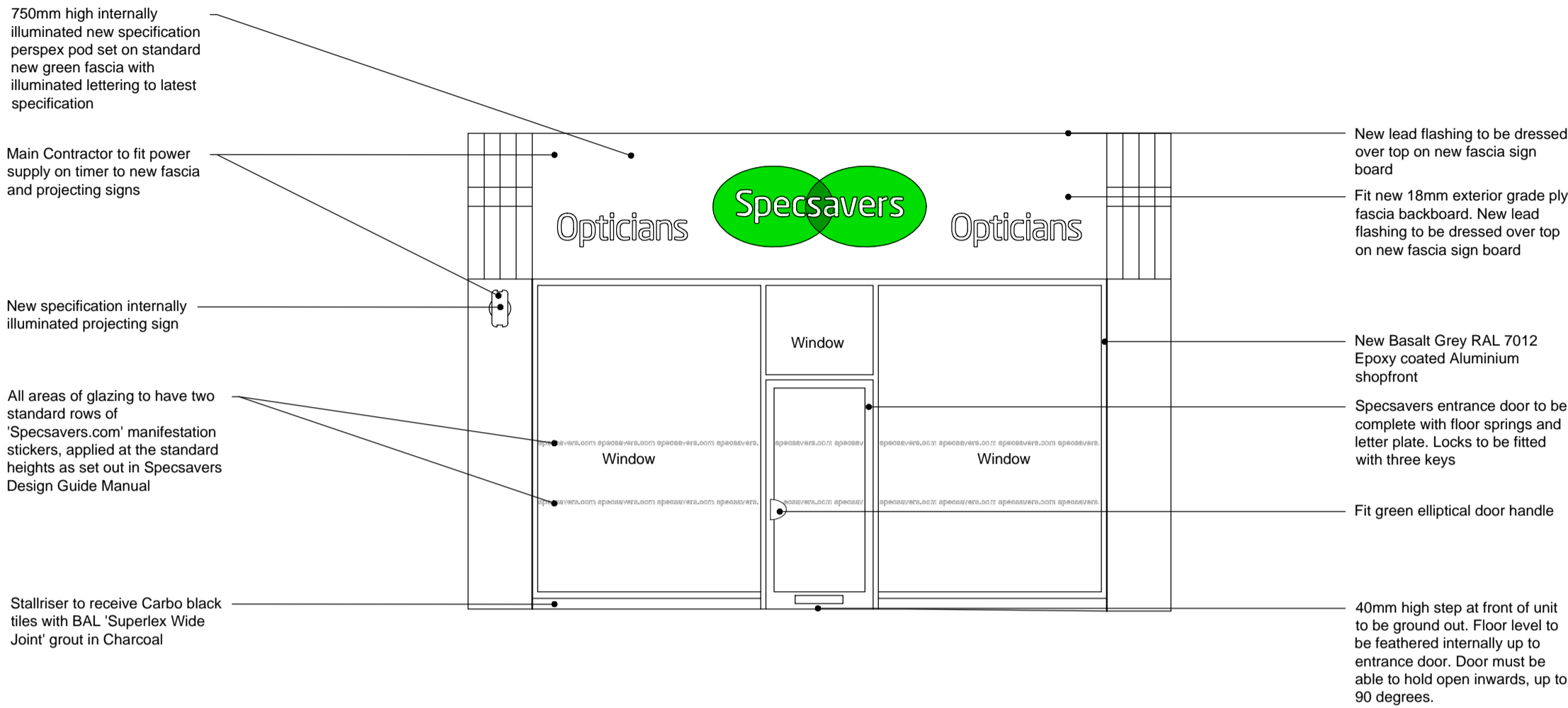
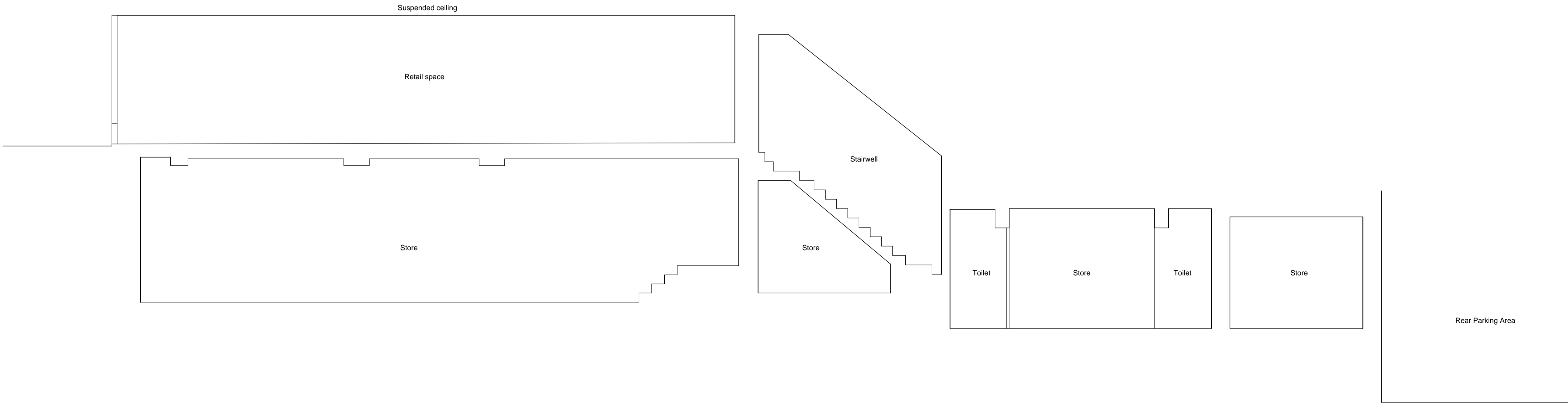


EXISTING FRONT ELEVATION



PROPOSED FRONT ELEVATION



EXISTING SECTION A-A

Schedules:  
Frame Numbers1068

Retail Area116.8 sq/m - 1257.2 sq/ft

Total AreasGd. Fl. 72.3sq/m - 778.2 sq/ft (retail 65.7 sq/m)  
Basemt Fl. 112.3 sq/m - 1208.8 sq/ft (retail 50.9 sq/m)

Notes:

Amendments:

Rev	Init.	Date	Description

Drawn By:

Platypus Limited

Design & Project Management Services

Tel: 07899 896 934 Fax: (01629) 581374

Ingledean House, 26 Imperial Road, Matlock Derbyshire, DE4 3NL

On Behalf Of:

Specsavers Optical Superstores

CAD Department,  
Business Development,  
Melrose House,  
42 Dingwall Road,  
Croydon, Surrey.  
CR0 2NE,  
United Kingdom.

Tel: + 44 (0) 20 8760 7420  
Fax: + 44 (0) 20 8760 7421  
E-mail: [\\_croydoncad@uk.specsavers.com](mailto:_croydoncad@uk.specsavers.com)  
Specsavers Online:  
[www.specsavers.com](http://www.specsavers.com)

Project:

Specsavers Opticians  
171 Finchley Road  
Swiss Cottage  
London  
NW3 6LB

Title:

Existing and Proposed Shopfront Elevations  
& Existing Section A-A

SWISS COTTAGE  
New Store

PRODUCTION DRAWINGS

Drawn By:  
JS

Scale:  
1:100@A3  
1:50@A1

Date:  
15/08/2011

Drawing Number:

1923/1013

Revision:  
-

Do not scale from this drawing. Dimensions to be checked on site