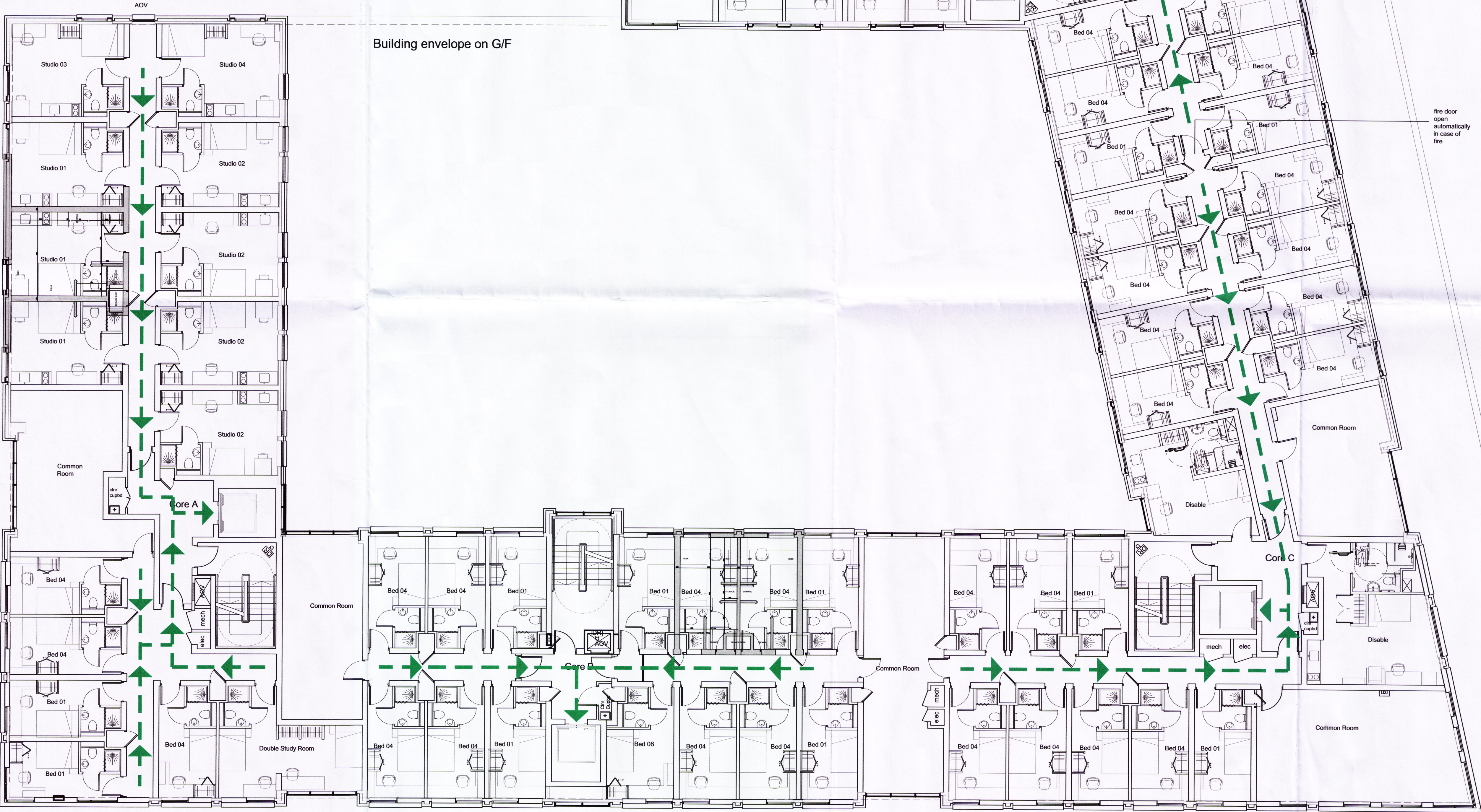


Refuse Strategy

Travelling Routes from Student residential units to Refuse Store

The Refuse Store is located on the ground floor directly adjacent to Core A which aids both student access and refuse collection alike.

Refuse transfer route for students from Upper Floors on route to First Floor wishing to access the Refuse Store at Ground Floor. Also see CJA's drawings (SK) 902 and (SK) 903.



Notes
Contractor must verify all dimensions on site before commencing any work or shop drawings.
If this drawing exceeds the quantities taken in any way the Architects are to be informed before the work is initiated.
Only figured dimensions to be taken from this drawing.
Do not scale off this drawing.
Drawings based on Ordnance Survey and / or existing record drawings - design and drawing content subject to Site Survey, Structural Survey, Site Investigations, Planning and Statutory Requirements and Approvals.
Authorised reproduction from Ordnance Survey Map with permission of the Controller of Her Majesty's Stationery Office. Crown Copyright reserved.
Carey Jones Architects Limited Copyright.

This drawing originates from the CAD file:

Revisions				
Rev	Des	By	Date	Ch

careyjones
chaptersolcher

Victoria House, Southampton Row
Bloomsbury, London WC1B 4EA
Tel +44 (0)20 7269 9400
Fax +44 (0)20 7269 9401

Royal Mills, 17 Redhill Street
Manchester M4 5BA
Tel +44 (0) 161 601 6573
Fax +44 (0) 161 601 6574

Project: West Hampstead
Job No: 23094

Title: Refuse Strategy [3] - Second Floor Plan (typical floor)

Scale: 1:100 @ A1	Drawn by: ABB
Date: March 2011	Checked by: KMC
Drawing No: (SK) 904	Revision No: P1

Refuse Strategy [3] - Second Floor Plan (typical floor)