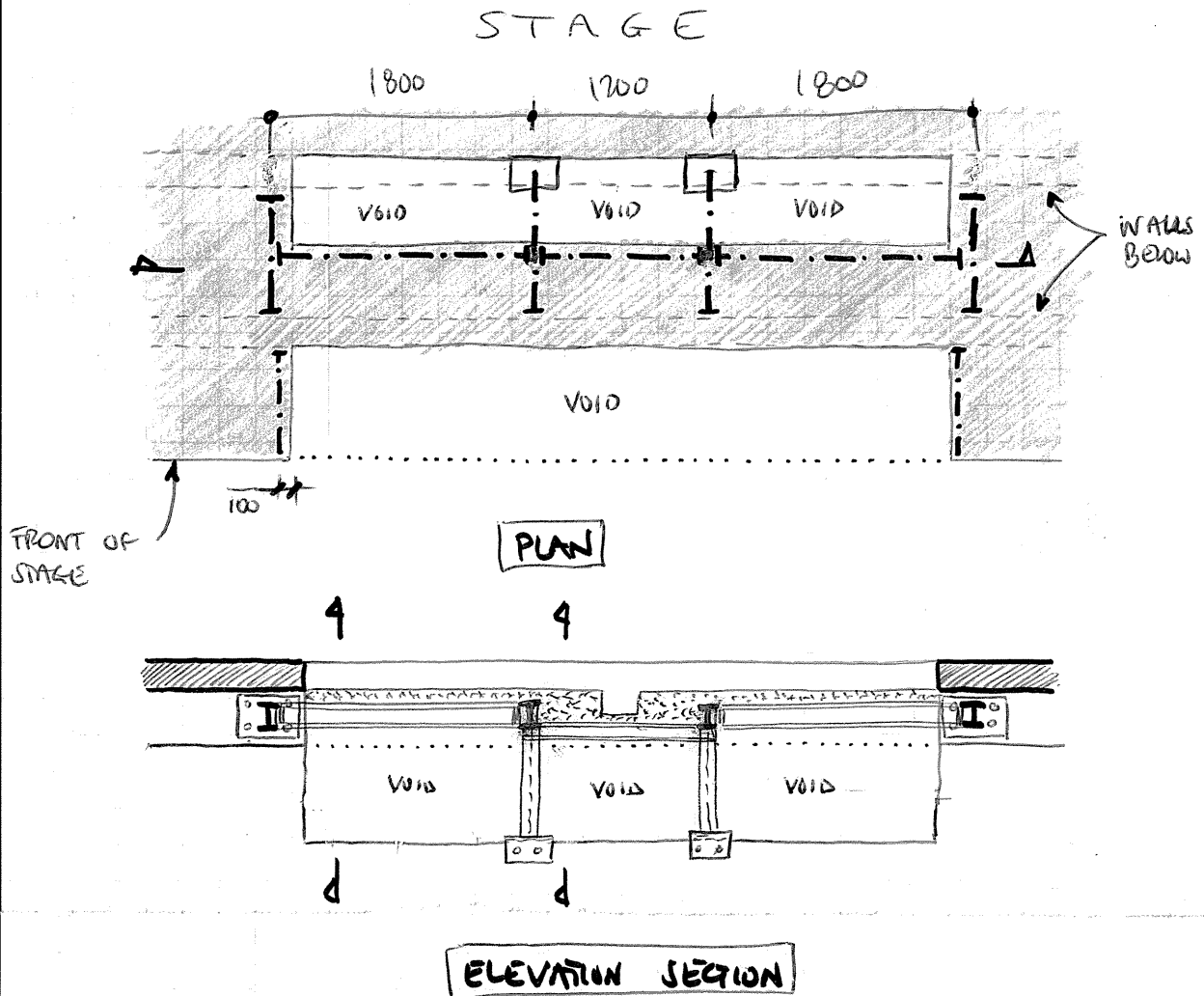




TRIMMING PROPOSAL TO FRONT OF STAGE



FOR DETAIL SECTIONS REFER TO SK02

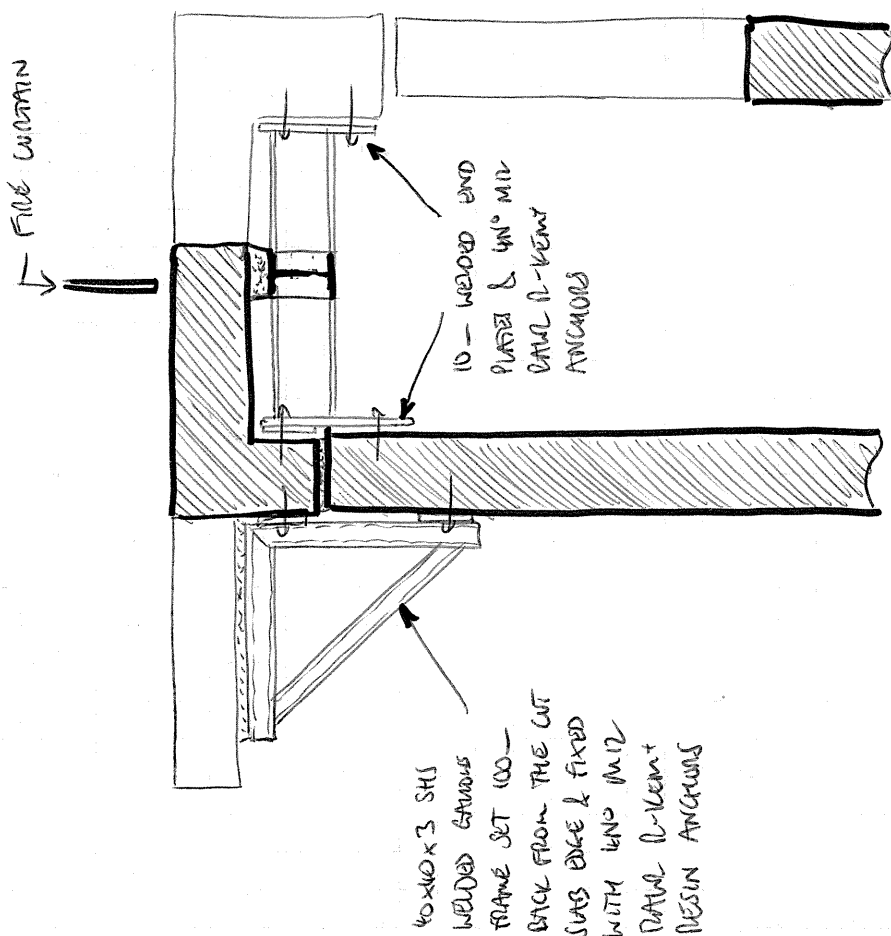
SEQUENCE (SUGGESTED)

- ① CUT SLOTS IN WALL FOR MIDDLE 2 WELDED, MITRED STEEL SECTIONS
- ② INSTALL ALL STEELWORK
- ③ DRYPACK BETWEEN TOP OF STEEL & SLABS
- ④ CUT OUT SLABS
- ⑤ ENSURE STAGE FLOORING IS PROPPED OR REMOVED
- ⑥ CUT OUT FULL SIZE HOLE THROUGH WALL INTO SUB-STAGE AREA

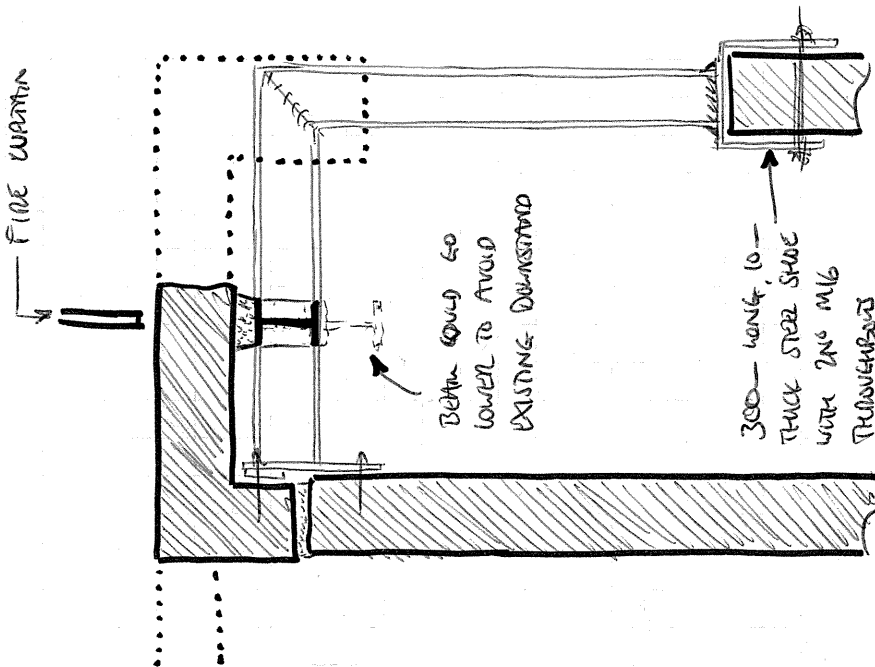
NOTE ALL STEEL TO HAVE 2ND INTUMESCENT PAINT PROTECTION

DETAIL ELEVATIONS

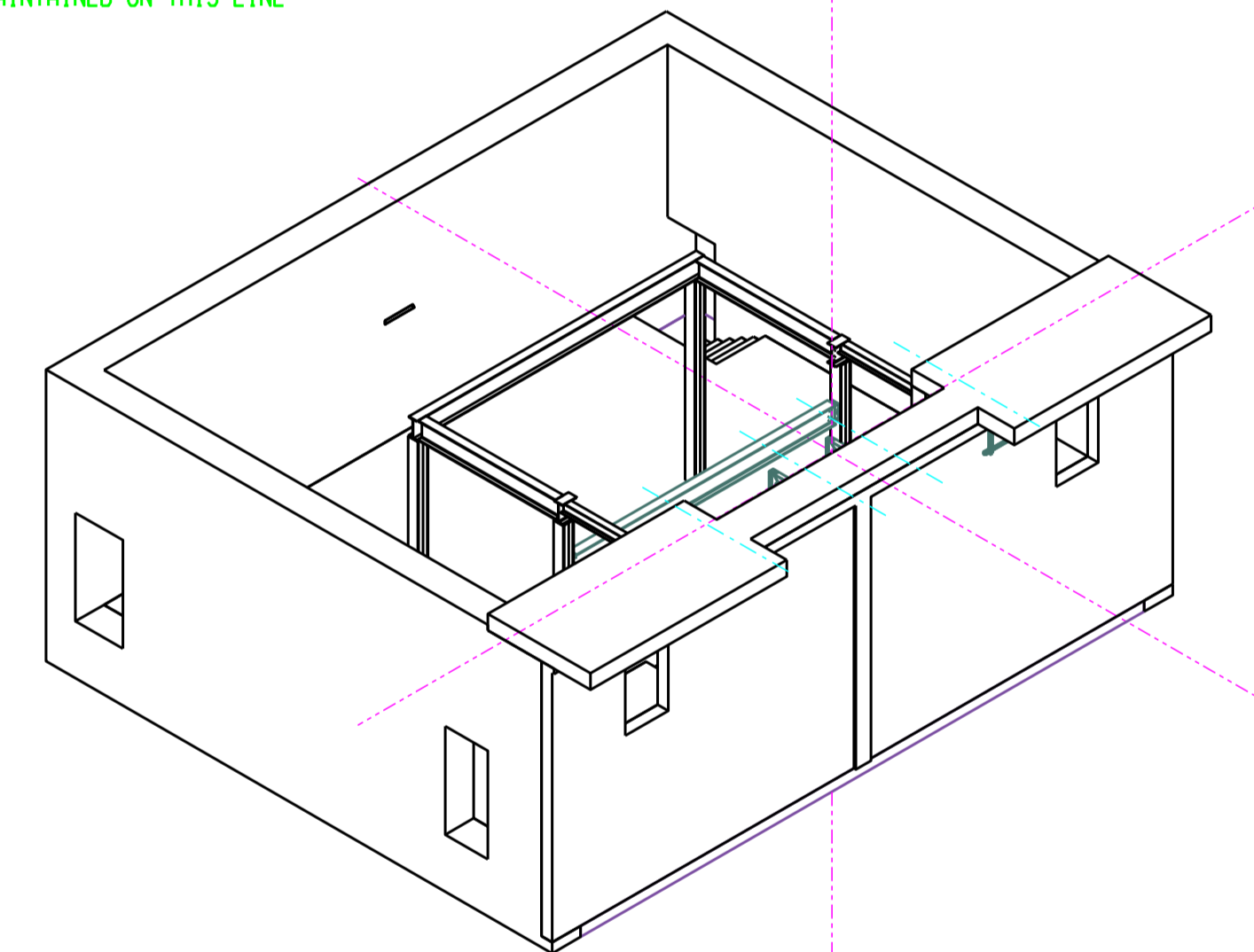
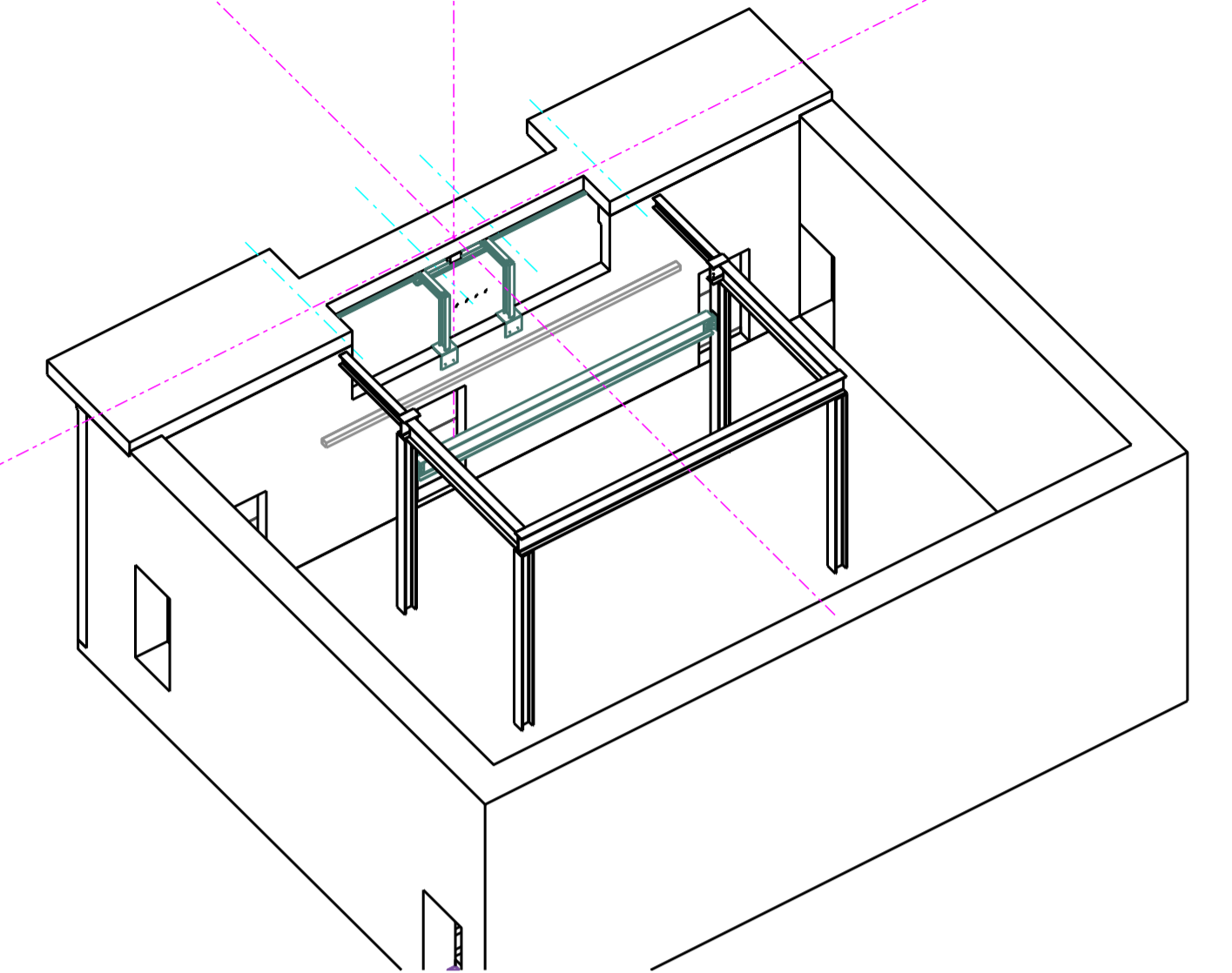
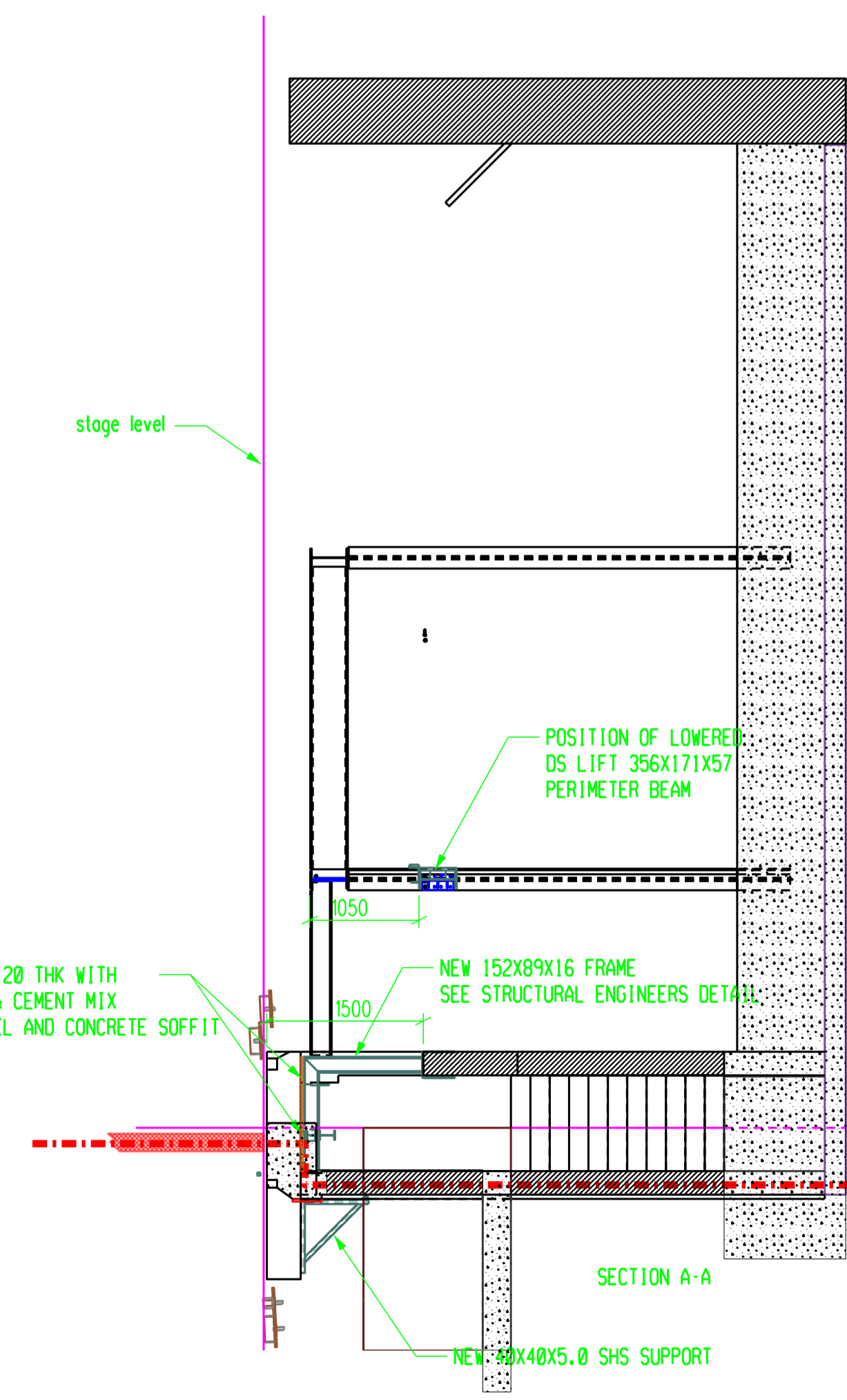
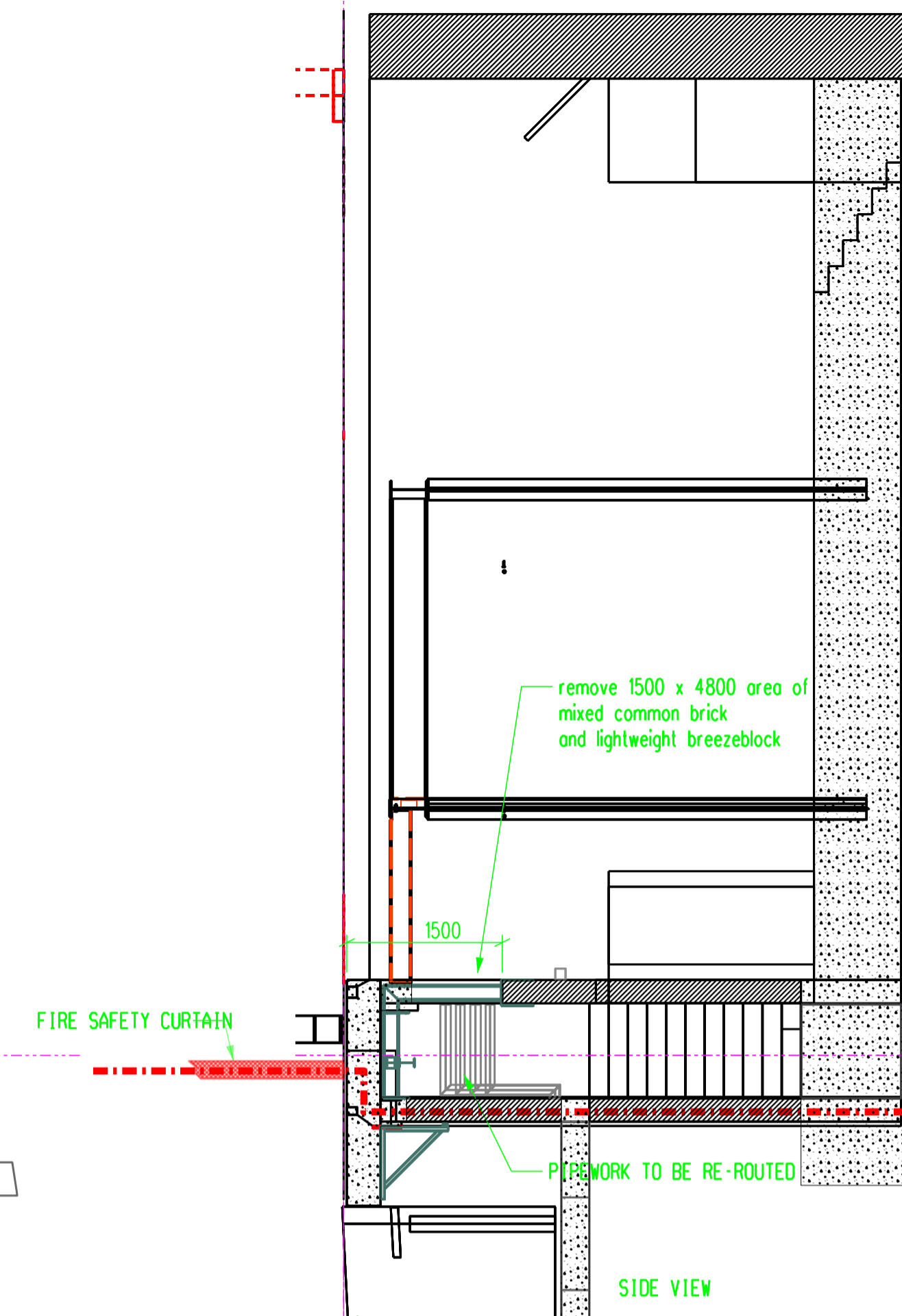
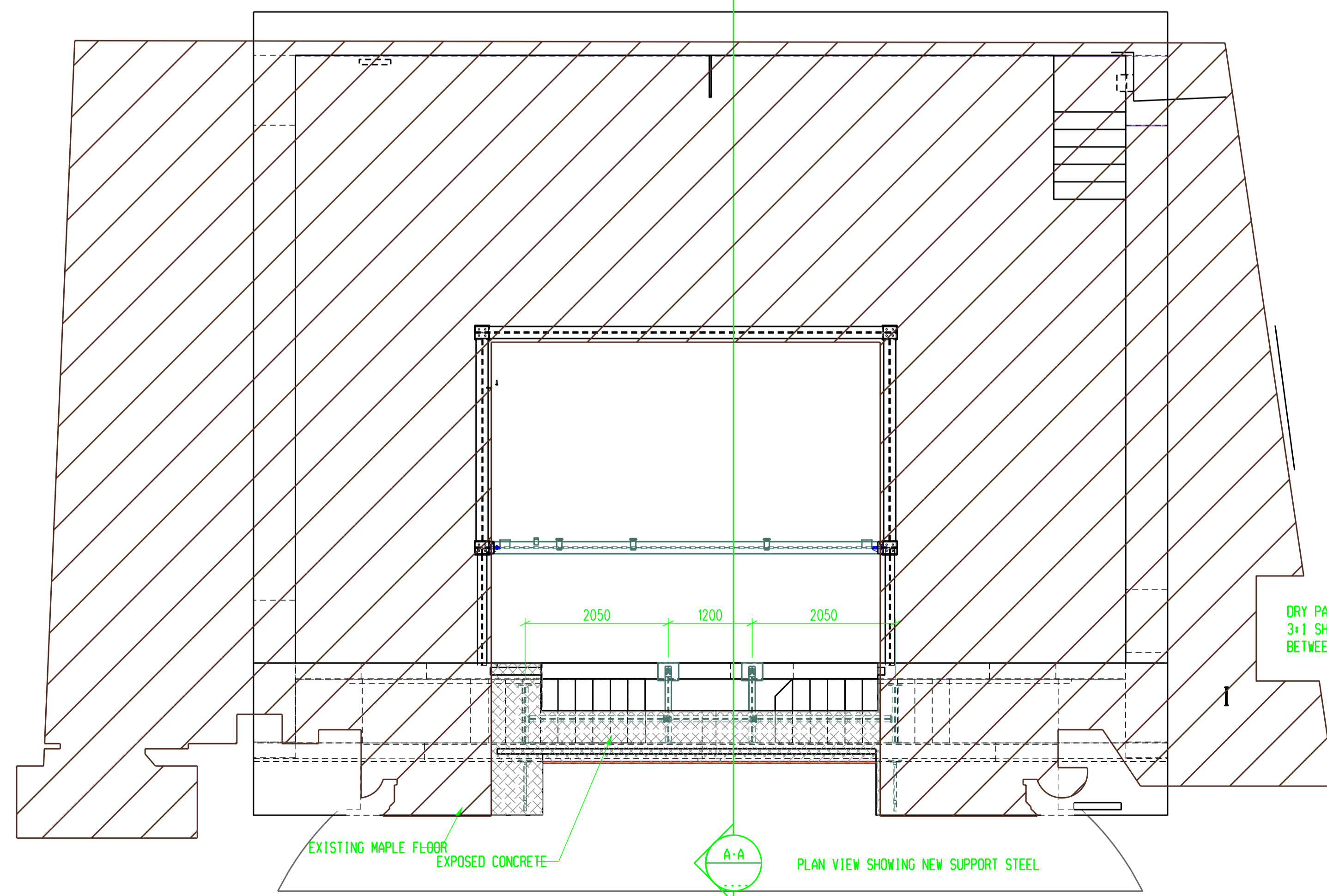
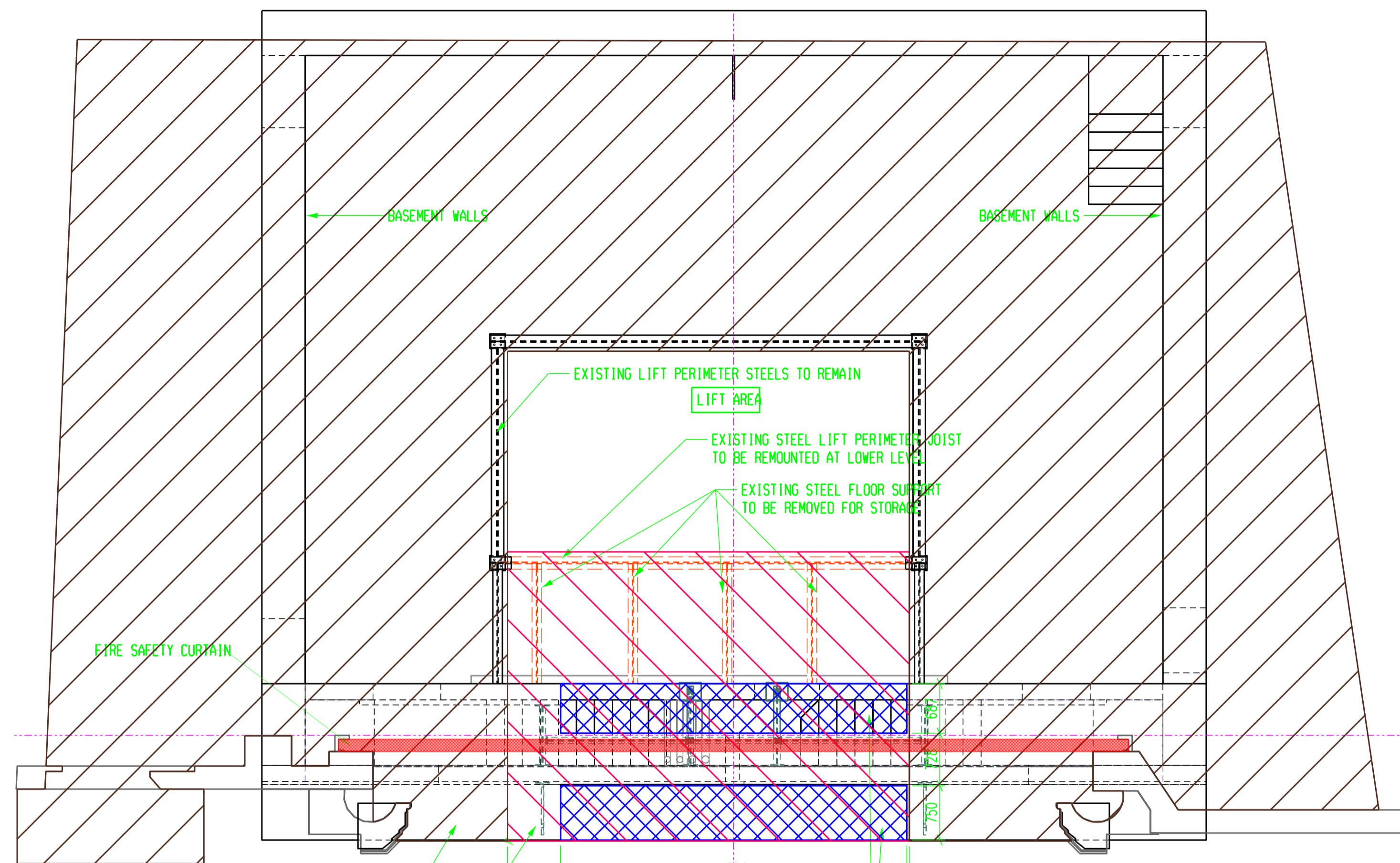
(1:100 A4)



END BEAM ELEVATION



MIDDLE BEAM ELEVATION



	H
	G
	F
	E
	D
	C
	B
	A

RSC		SCENIC WORKSHOPS TIMOTHY'S BRIDGE ROAD STRATFORD UPON AVON WARWICKSHIRE CV37 9UY UK
TEL: +44 (0)1799 255600	FAX: +44 (0)1799 255615	EMAIL: TBR.ADMIN@RSC.ORG.UK

JOB #MATILDA CAMBRIDGE THEATRE 2011	
TITLE: SUBSTAGEX 03 STRUCTURAL ALTERATIONS	
DRN BY: PJB	FIRST ISSUE: 21AUG11
SCALE: 1:50	REV: A
JOB CODE: MTPP.11F	DGN NO: 1903