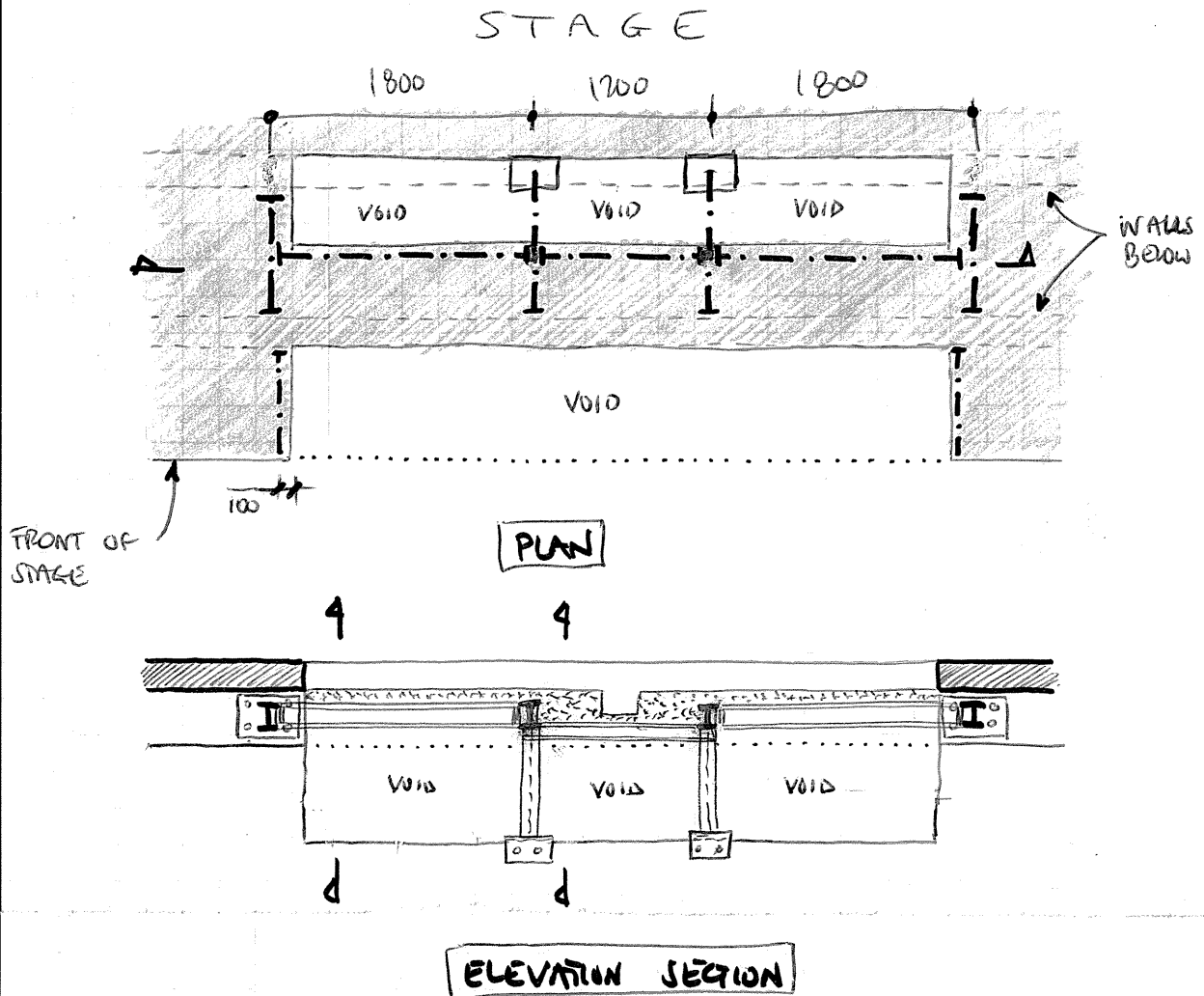


TRIMMING PROPOSAL TO FRONT OF STAGE



FOR DETAIL SECTIONS REFER TO SK02

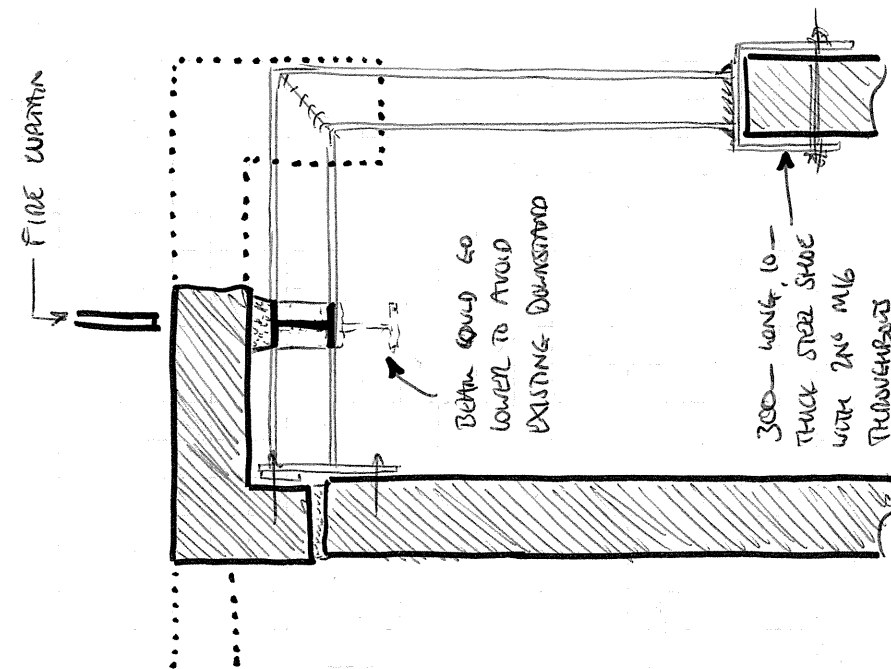
SEQUENCE (SUGGESTED)

- 1 CUT SLOTS IN WALL FOR MIDDLE 2 WELDED, MITRED STEEL SECTIONS
- 2 INSTALL ALL STEELWORK
- 3 DRYPACK BETWEEN TOP OF STEEL & SLABS
- 4 CUT OUT SLABS
- 5 ENSURE STAGE FLOORING IS PROPPED OR REMOVED
- 6 CUT OUT FULL SIZE HOLE THROUGH WALL INTO SUB-STAGE AREA

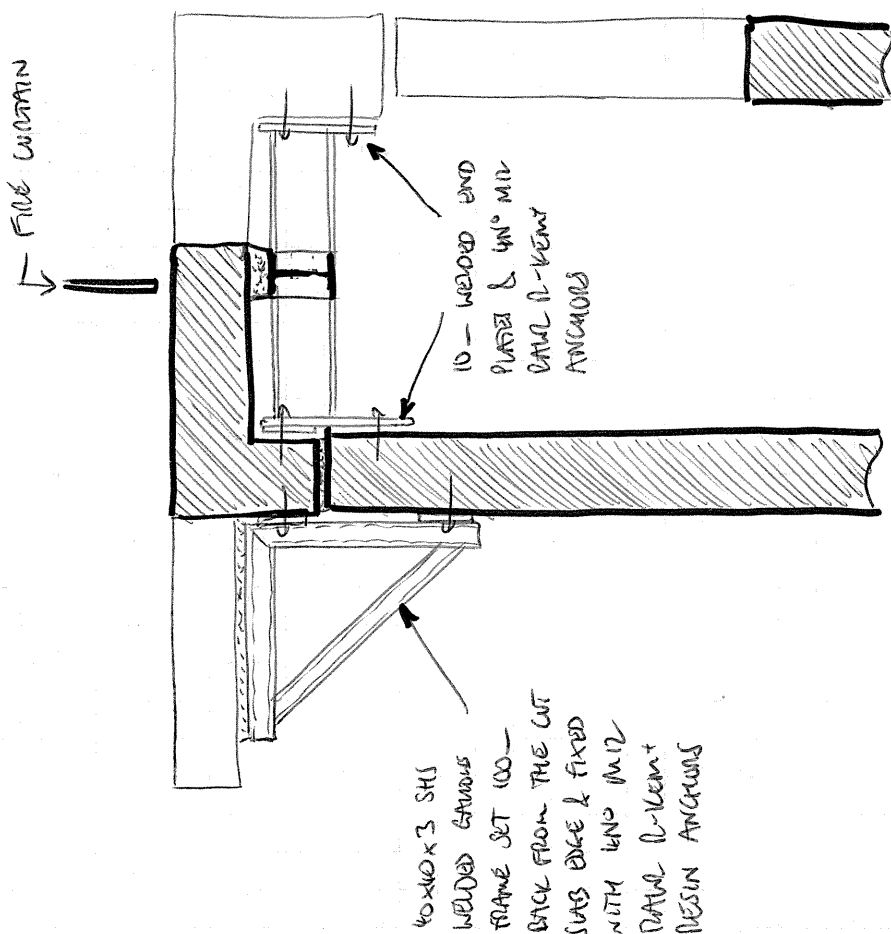


NOTE ALL STEEL TO HAVE 2ND INTUMESCENT PAINT PROTECTION

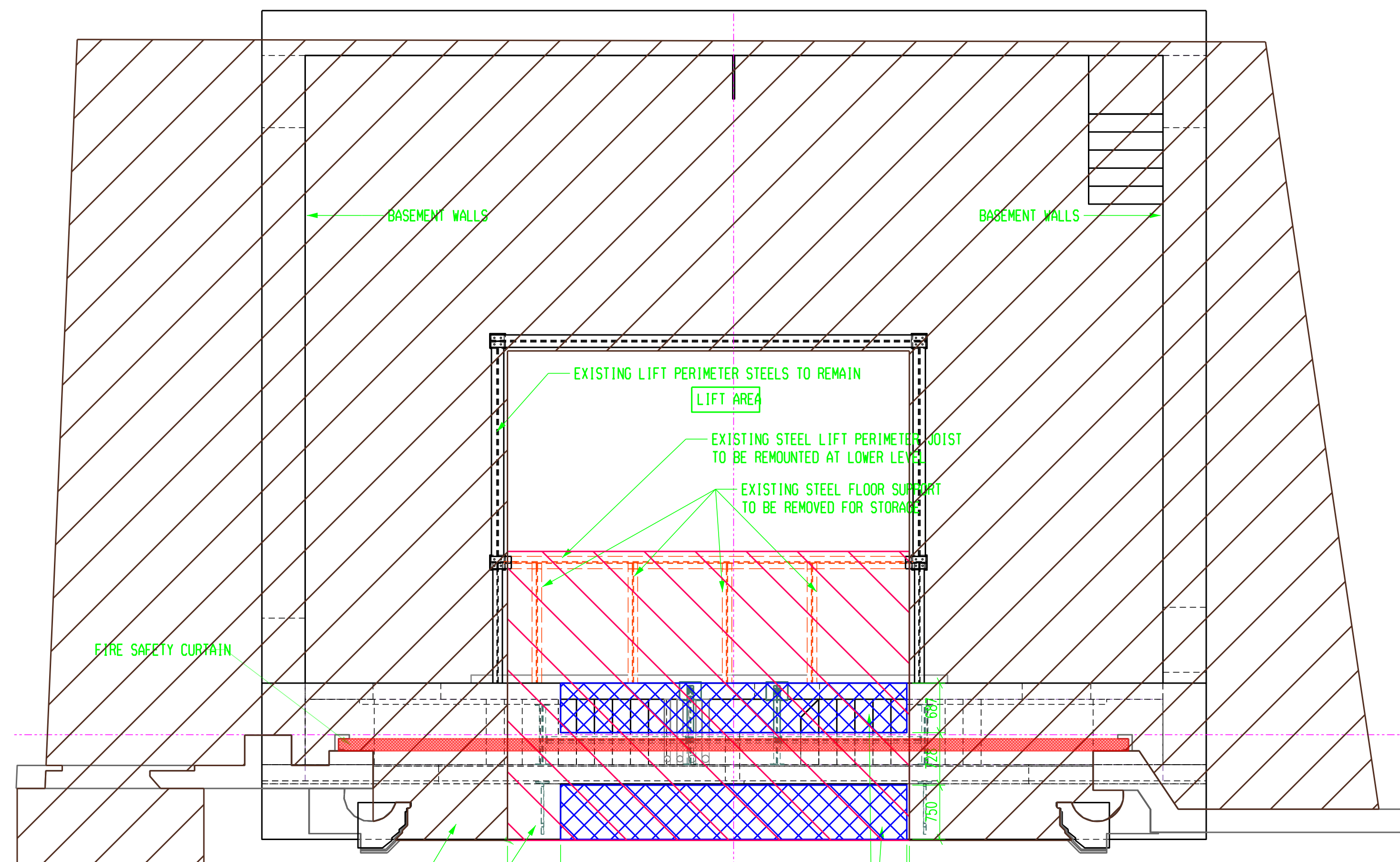
DETAIL ELEVATIONS (1:100 A4)



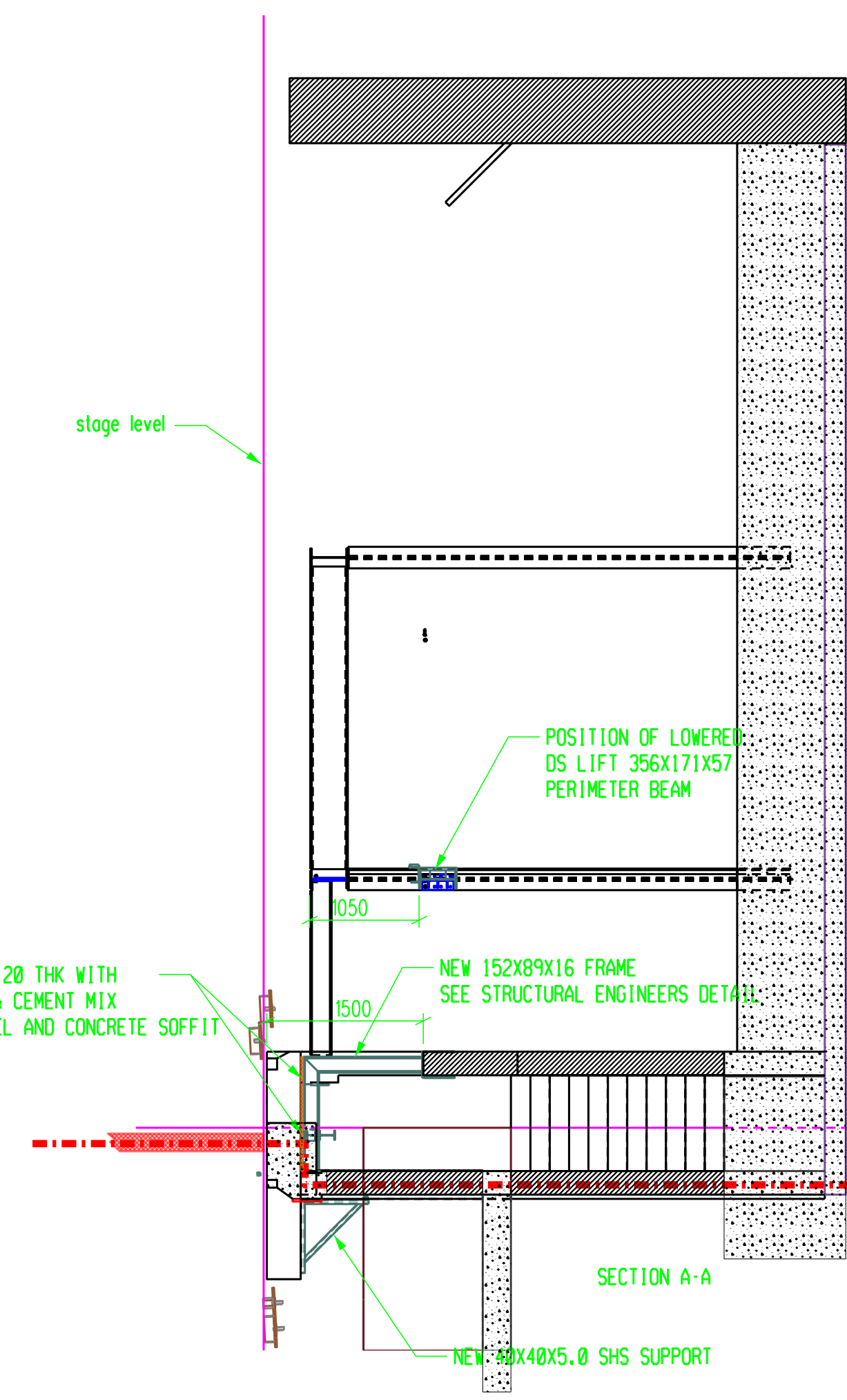
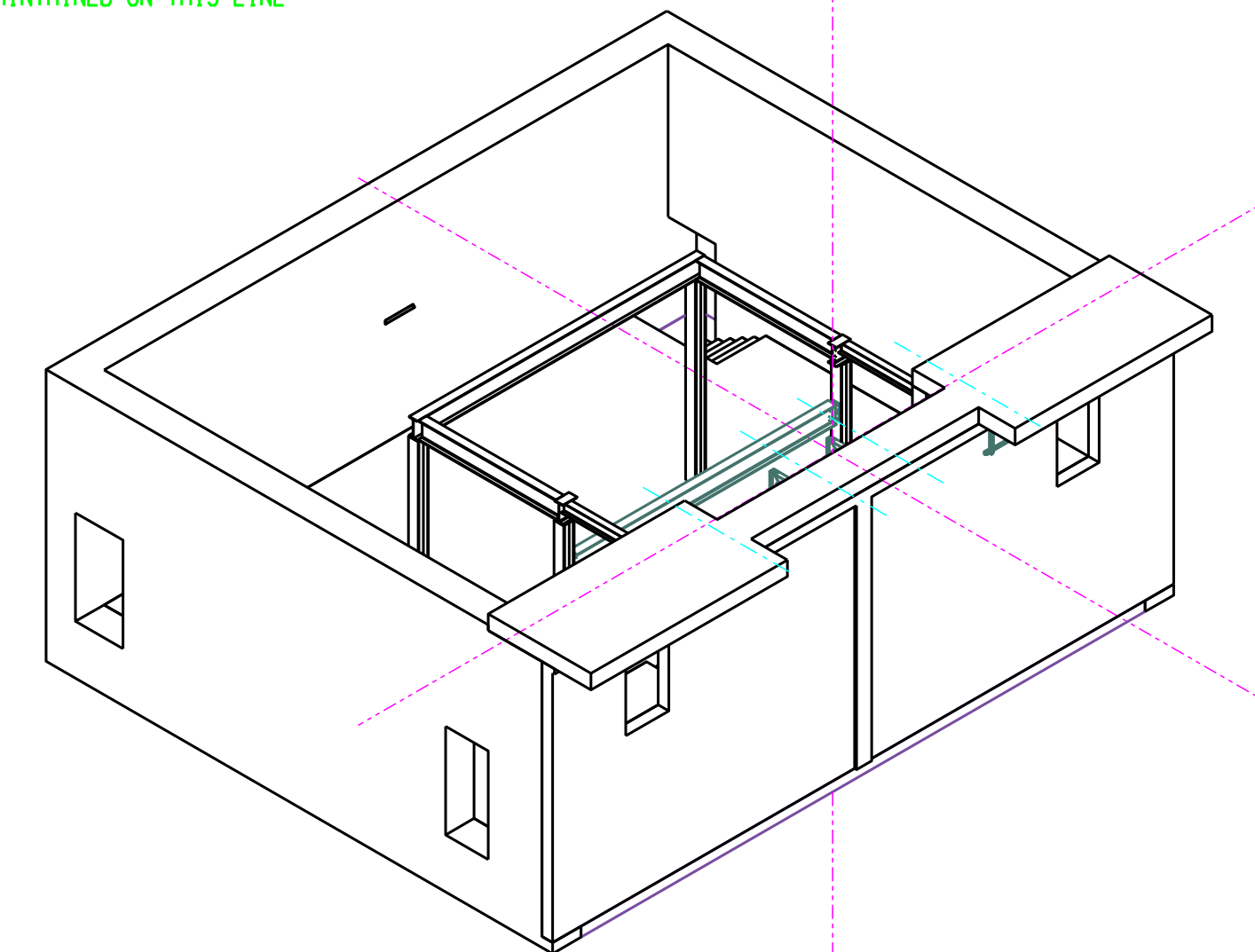
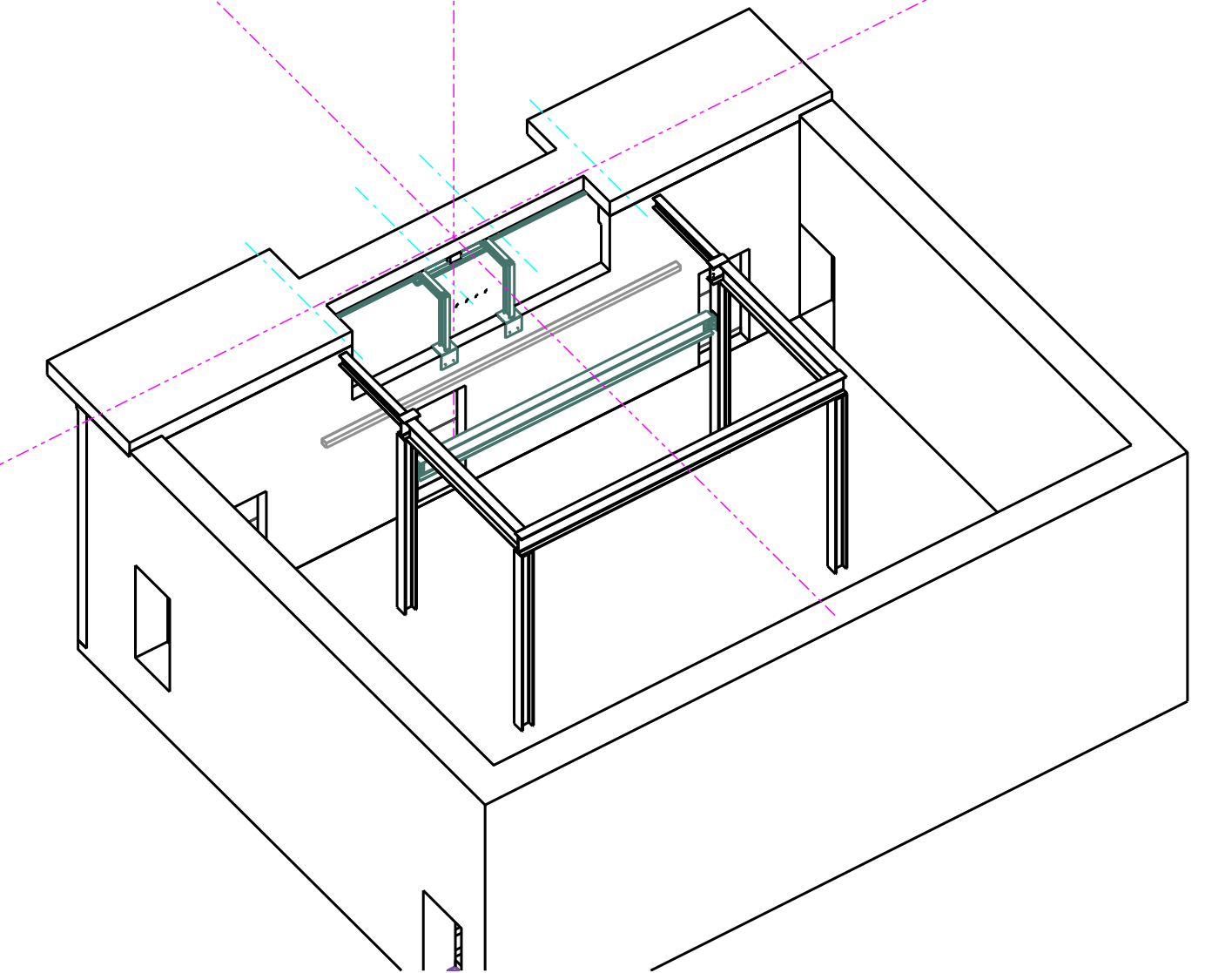
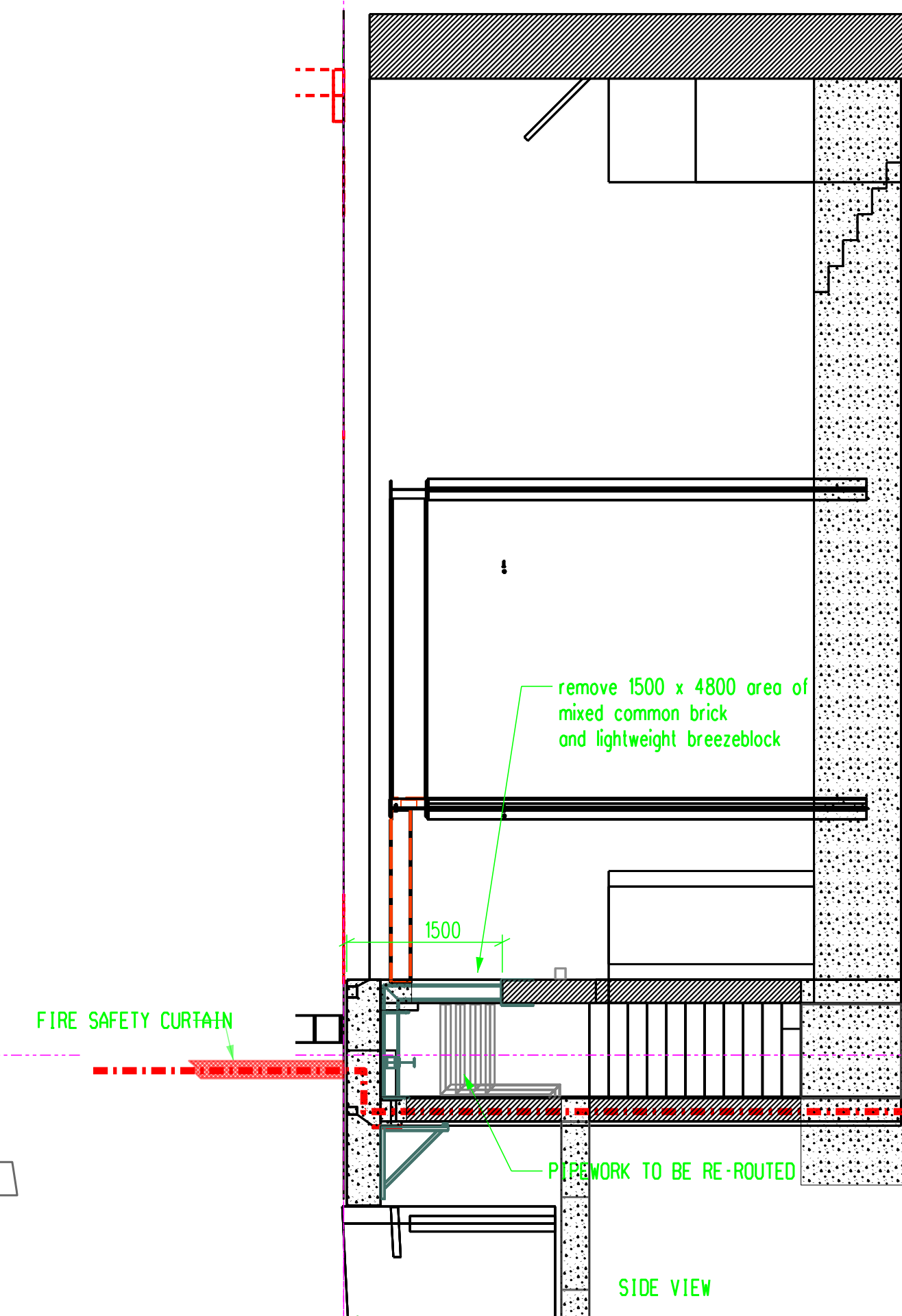
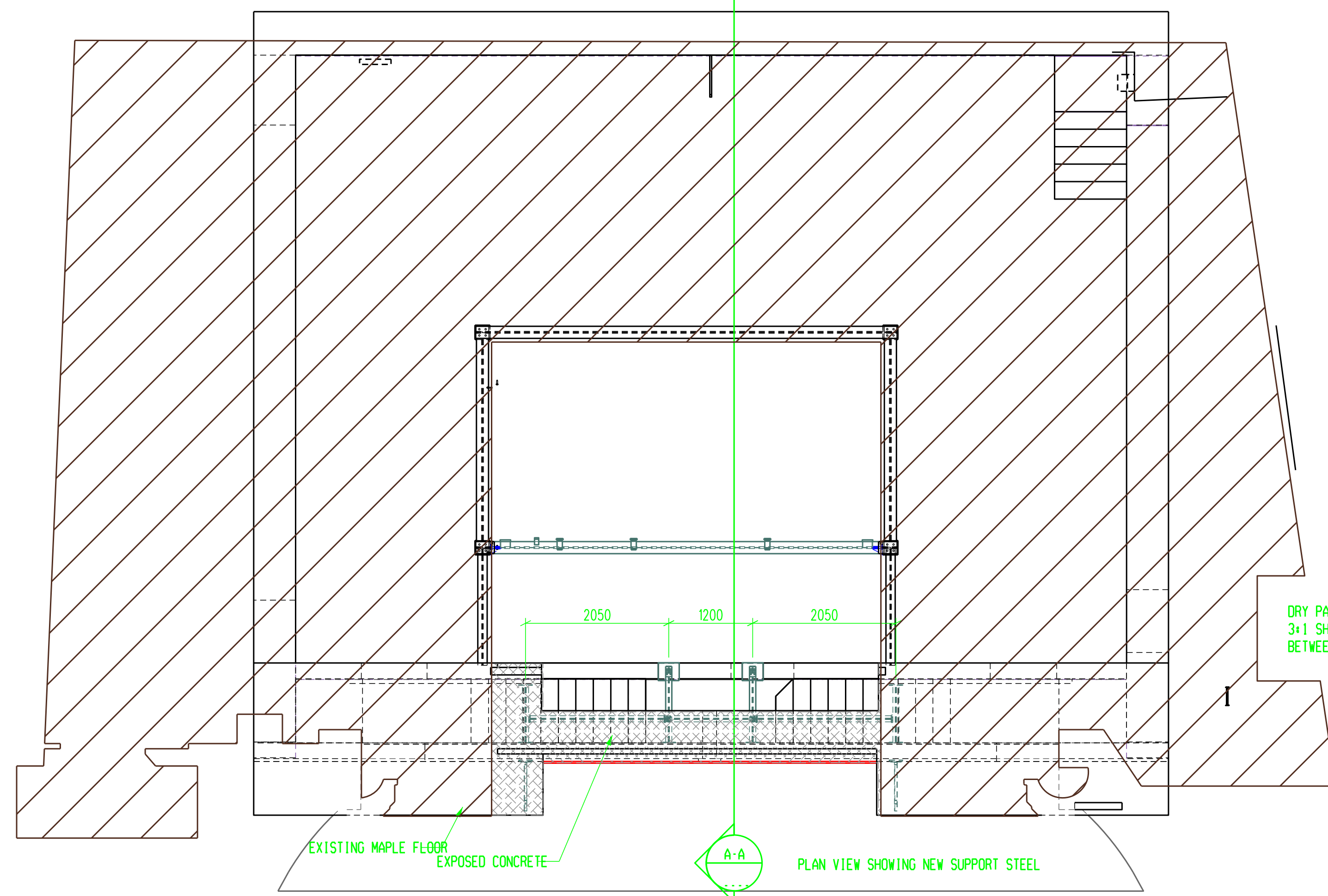
MIDDLE BEAM ELEVATION



END BEAM ELEVATION



REMAINING AREA OF EXISTING MAPLE FLOORING
 MAPLE FLOOR TO BE LIFTED AND STORED
 TO BE MADE INTO PANELS FOR FUTURE REINSTATEMENT
 5572 (CHECK ON SITE)
 AREA OF MAPLE TO BE REMOVED
 TO ALIGN WITH SIDES OF LIFT
 CONCRETE TO BE REMOVED
 IN THESE AREAS
 PLAN VIEW WITH DETAILS OF AREAS AFFECTED



	H
	G
	F
	E
	D
	C
	B
	A

RSC		SCENIC WORKSHOPS TIMOTHY'S BRIDGE ROAD STRAFORD UPON AVON WARWICKSHIRE CV37 9UY UK TEL: +44 (0)1799 255600 FAX: +44 (0)1799 255615 EMAIL: TBR.ADMIN@RSC.ORG.UK
JOB #MATILDA CAMBRIDGE THEATRE 2011		
TITLE 19 SUBSTAGEX 03 STRUCTURAL ALTERATIONS		
DRN BY: P/B	FIRST ISSUE	21AUG11
SCALE: 1:50	REV	A
JOB CODE: MTPP.11F	DCN	NO: 1903