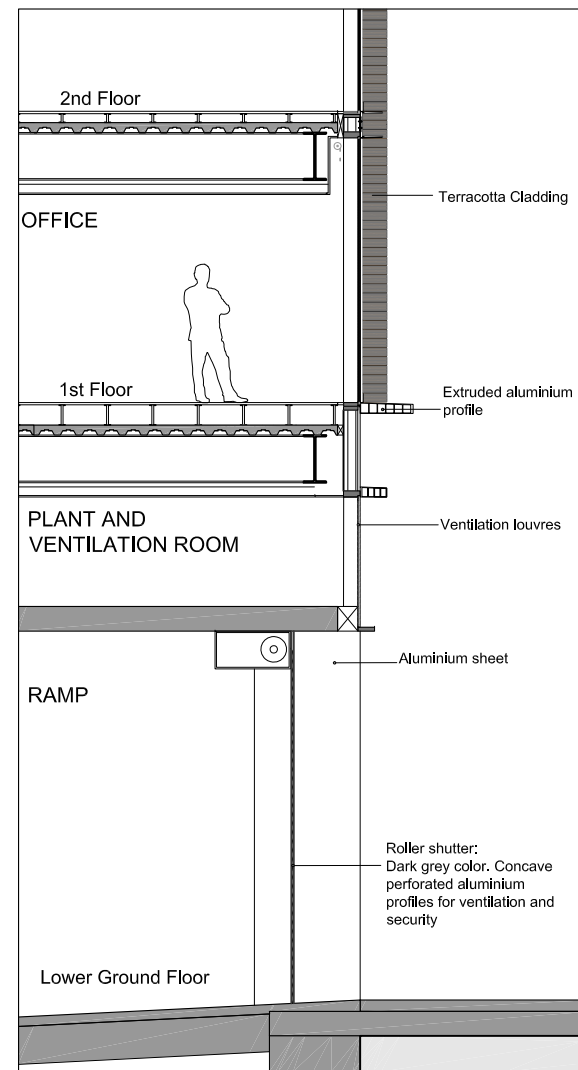
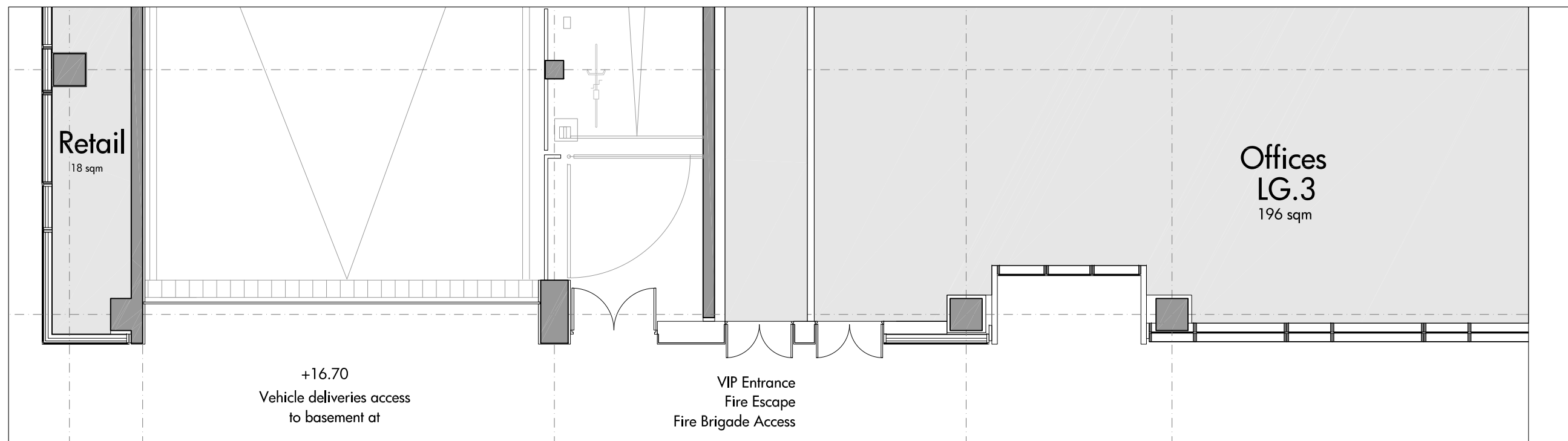




01 ELEVATION



02 SECTION \_\_\_\_\_



03 PLAN

[illegible]

CONSULTANTS

Design Architect  
Walmore UK Ltd  
133 Oxford Gardens  
London, UK W10 6NE

Executive Architect  
ADAMSON ASSOCIATES (INTERNATIONAL) LIMITED  
6th Floor, One Canada Square  
Canary Wharf  
London, UK E14 5AB

AKT II  
Structural Engineer  
100 St John Street  
London  
UK, EC1M 4EH

HOARE LEA  
Glen House  
200-208 Tottenham Court Road  
London, W1T 7PL

Quantity Surveyor  
Gleeds  
95 New Cavendish Street  
London, W1W 6XF

File Consultant  
Aecom  
63-77 Victoria Street  
St Albans, Herts AL1 3ER

Issued by:  
**WILMOTTE UK Ltd**

For Approval

Client **BNP PARIBAS  
REAL ESTATE**



Project  
**King's Cross Central**  
Plot B1

Drawing

**West Elevation**  
**Facade Details 03**

Drawing no			Rev
Wuk_1440_PL55WE33			-
Date	...	Date	...
Drawn	LV	Checked	LV
Approved		PL	
Scale		1:100@A3	
Date		15.09.11	

**WILMOTTE UK Ltd**  
Lichfield Studio  
133, Oxford Gardens  
London W10 6NE UK  
T +44 (0) 2089697171  
F +44 (0) 2089643407  
E [wilmotte@wilmotte.co.uk](mailto:wilmotte@wilmotte.co.uk)






file ..