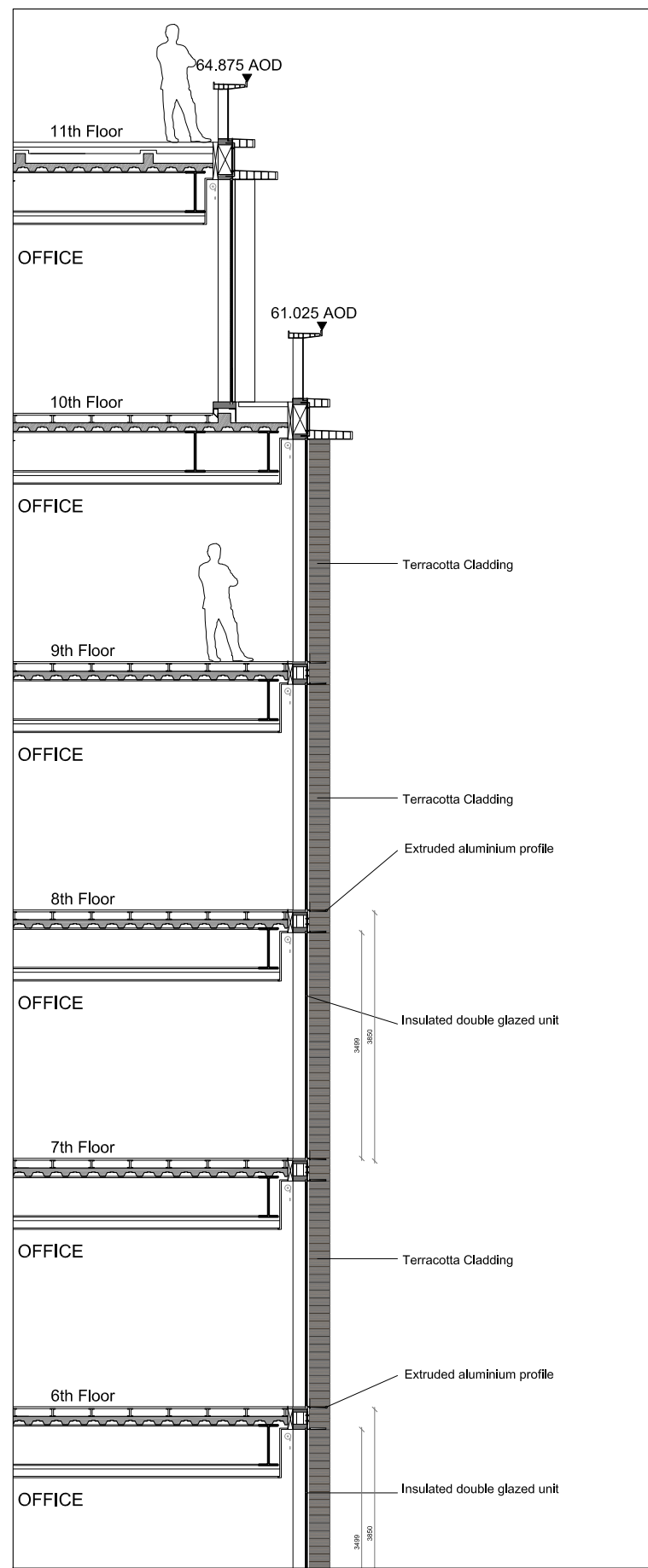
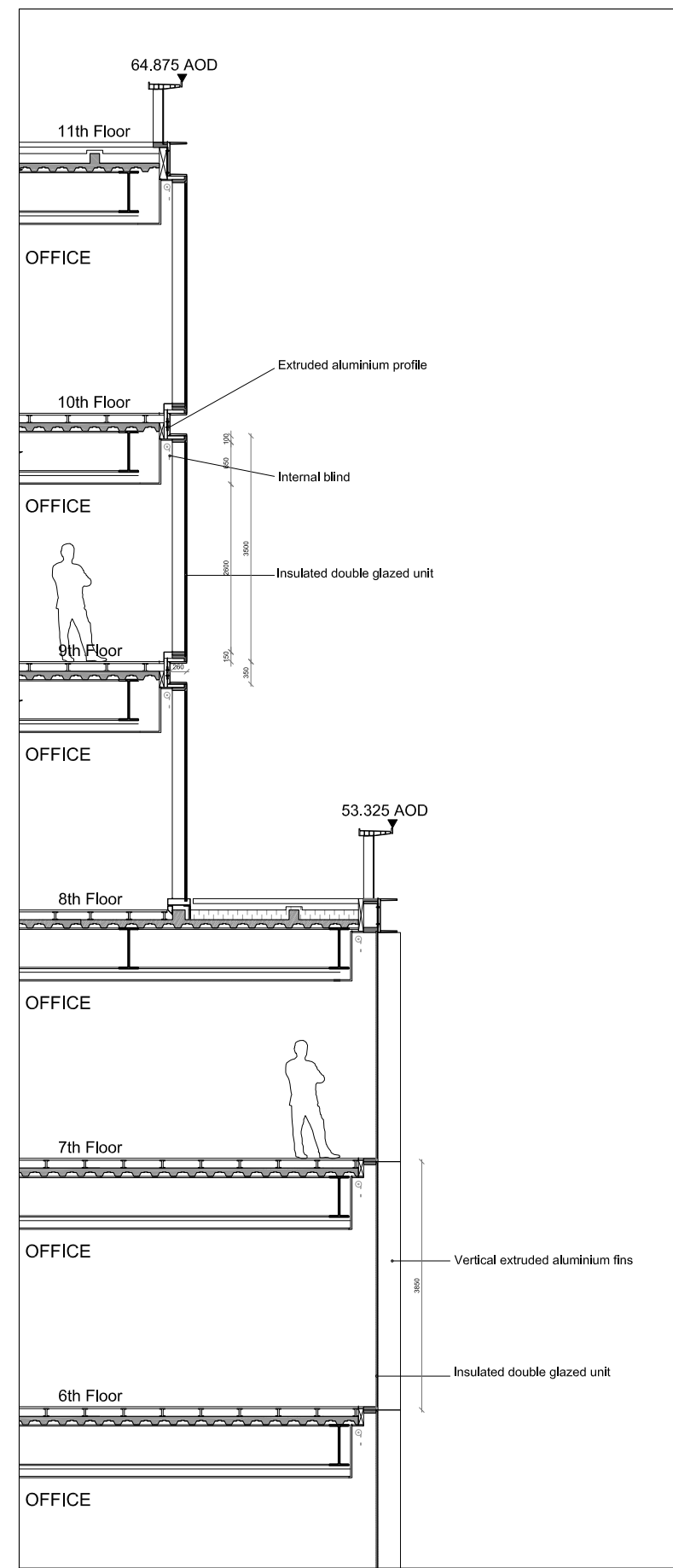


01 ELEVATION



02 SECTION



03 SECTION

[illegible]

CONSULTANTS

Design Architect
Wilmoth UK Ltd
133 Oxford Gardens
London, UK W10 6NE

Executive Architect
ADAMSON ASSOCIATES (INTERNATIONAL) LIMITED
6th Floor, One Canada Square
Canary Wharf
London, UK E14 5AB

AKT III
Structural Engineer
100 St John Street
London
UK, EC1M 4EH

HOARE LEA
Glen House
200-208 Tottenham Court Road
London, W1T 7PL

Quantity Surveyor
Gleeds
95 New Cavendish Street
London, W1W 6XF

Fire Consultant
Aecom
63-77 Victoria Street
St Albans, Herts AL1 3ER

Issued by:

WILMOTTE UK Ltd

Purpose of Issue

For Approval

Client



Project

King's Cross Central
Plot B1

Drawing

West Elevation Facade Details 02

Drawing no Wuk_1440_PL55WE32			Rev -
Date	Date	Date	
Drawn LV	Checked LV	Approved PL	
Scale 1:100@A3		Date 15.09.11	



file ...