

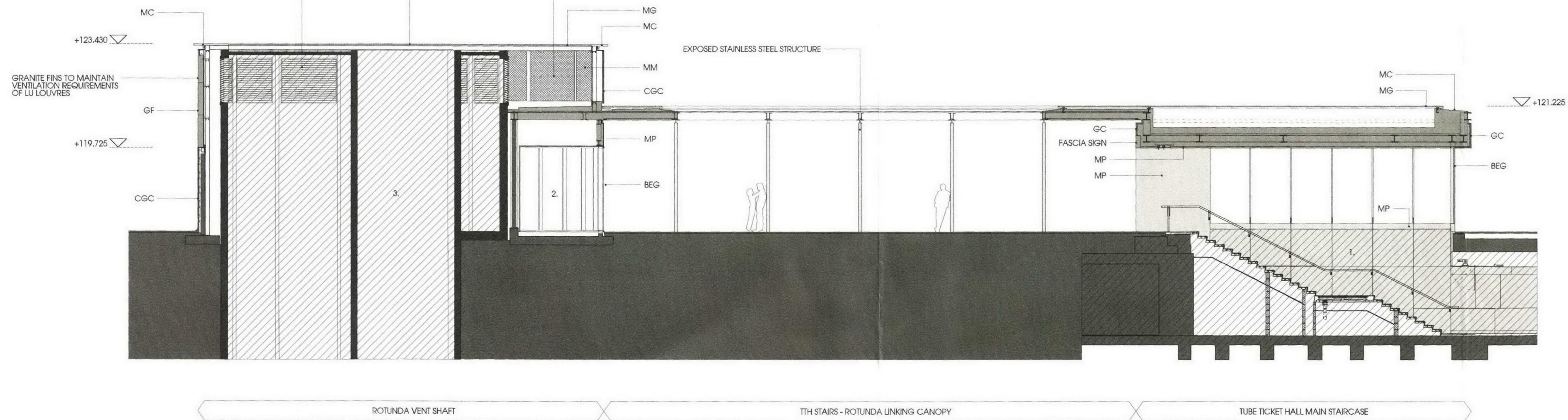
ROOM KEY

1. EXISTING TUBE TICKET HALL STAIR
2. PROPOSED RETAIL UNIT
3. EXISTING ROTUNDA VENT SHAFT

PROPOSED RETAIL CONDENSER UNIT LOCATION
(PASSIVE PROVISION ONLY)

METAL GRILLE OVER STRUCTURE TO MAINTAIN
VENTILATION REQUIREMENTS OF LUL LOUVRES
(CIRCA 20.65QM FREE AREA) AND PROPOSED
RETAIL CONDENSER UNITS

EXISTING LUL VENTILATION LOUVRES
TO BE RETAINED



1 | SECTION CC

0023 Refer to Drawing CAP-0020

ROOM KEY

1. EXISTING TUBE TICKET HALL STAIR
2. PROPOSED RETAIL UNIT
3. EXISTING ROTUNDA VENT SHAFT

EXISTING LIFT OVERUN CLAD IN MC

MG

+122.500

MC

+121.225

GC

2/CAD-0028

BEG

MP

1/CAD-0028

GC

FASCIA SIGN

MP

MP

MC

MG

CGC

GC

GF

CGC

MC

MG

CGC

GC

GF

CGC

MC

MG

CGC

GC

GF

CGC

MC

MG

CGC

GC

GF

CGC

MC

MG

CGC

GC

GF

CGC

2 | SECTION BB

0023 Refer to Drawing CAP-0020

PROPOSED RETAIL CONDENSER UNIT LOCATION
(PASSIVE PROVISION ONLY)

METAL GRILLE OVER STRUCTURE TO MAINTAIN
VENTILATION REQUIREMENTS OF LUL LOUVRES
(CIRCA 20.65QM FREE AREA) AND PROPOSED
RETAIL CONDENSER UNITS

EXISTING LUL VENTILATION LOUVRES
TO BE RETAINED

2/CAD-0027

MC

+123.430

GF

+119.725

CGC

MC

MG

CGC

GC

GF

CGC

MC

MG

CGC

GC

GF

CGC

MC

MG

CGC

GC

GF

CGC

MC

MG

CGC

GC

GF

CGC

MC

MG

CGC

GC

GF

CGC

MC

MG

CGC

GC

GF

CGC

MC

MG

CGC

GC

Notes

Contractor to check all dimensions on site. Do not scale from this drawing. Stanton Williams to be advised of any variation between the drawings and site conditions.

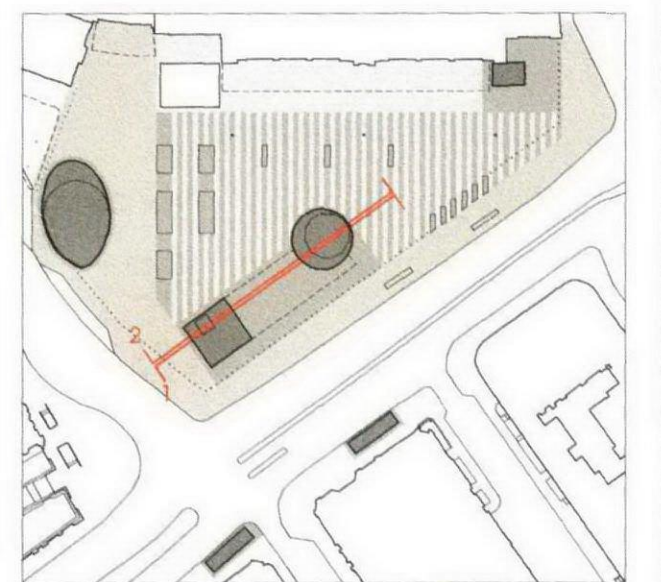
Drawings are based on survey data and may not accurately represent what is physically present

All levels are in meters above tunnel datum (ATD). Tunnel Datum (TD) = Ordnance Datum Newlyn (ODN) + 100m

© Stanton Williams.
All rights described in Chapter IV of the Copyright, Designers and Patents Act 1998 have been asserted.

This drawing has been produced by Stanton Williams under an instruction by Network Rail on behalf of London Underground Ltd for the submission under the Channel Tunnel Rail Link act 1996 - Schedule 6. Plans and Specification for the following structures - The cladding and retail extension to the Blue Egg Ventilation Shaft, the Tube Ticket Hall Main Staircase and the Euston Road Canopies.

To be read in conjunction with the specification and all relevant drawings.



KEY

- EXISTING STRUCTURE
- DARK GREY GRANITE
- LIGHT GREY GRANITE
- YORK STONE

MATERIAL KEY

- BEG BLAST ENHANCED GLAZING
- CGS CURVED GRANITE SKIRTING
- CGC CURVED GRANITE CLADDING
- GC GRANITE CLADDING
- GF GRANITE FINS (APPROX 50% FREE AREA)
- MC METAL CORING
- MD METAL DOORS
- MG METAL GRILLE
- PMD PERFORATE METAL DOORS
- MM METAL MESH (70-80% FREE AREA)
- MP METAL PANEL
- RS RENDERED SOFFIT
- HVB HOSTILE VEHICLE BARRIERS

| | | | | |
|------------------------------------|----------|----|------|------|
| 02 | 19.09.11 | TS | TS | SH |
| ISSUED FOR PLANNING UNDER CTRL ACT | | | | |
| 01 | 29.07.11 | TS | TS | SH |
| ISSUED FOR PLANNING/GRIP STAGE 4 | | | | |
| Issue | Date | By | Chkd | Appd |

Client
Cubitt House
1 Batten Bridge Road
London N1C 4AH
Phone +44 (0)20 7147 6011
Email
KingCrossRedevelopment@ProjectDocumentControl@networkrail.co.uk



Stanton Williams
36 Graham Street
London N1 9SU
Phone +44 (0)20 7880 6400
Email 420@stantonwilliams.com
www.stantonwilliams.com

STANTON
WILLIAMS

Job Title

King's Cross Station
Redevelopment Programme
Package 7

Drawing Title

Proposed Tube Ticket Hall Main Staircase,
Rotunda Vent Shaft and TTH Stairs-Rotunda
Linking Canopy - Sections BB + CC
ARC-DWG-SWA-SSQ-CBSA-CAS-0023

Scale at A1

1:100

Document Reference No

Drawing Status

Planning / Grip Stage 4

| | | |
|------------|--------------|------|
| SWA Job No | Drawing No | Rev. |
| 420 | SSQ-CAS-0023 | 02 |