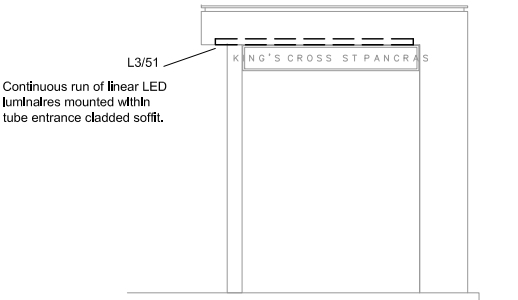


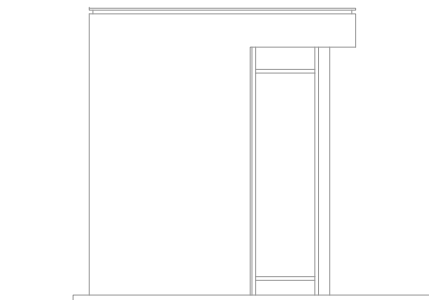
NORTH ELEVATION

Euston Rd. LU Entrance, Elevation F-F, scale 1:50 @ A1



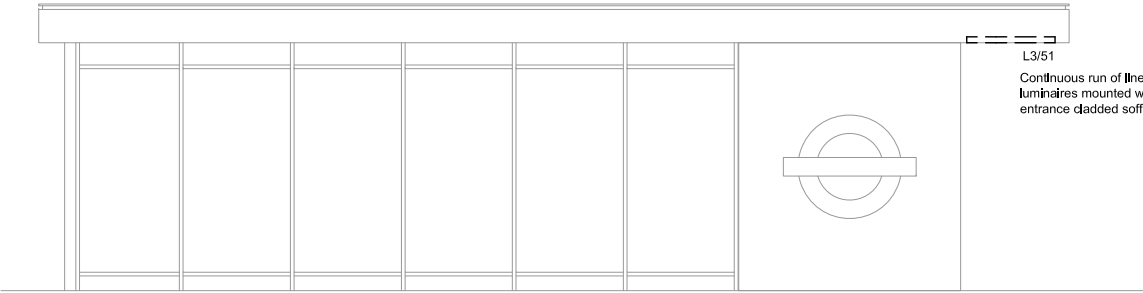
EAST ELEVATION

Euston Rd. LU Entrance, Elevation G-G, scale 1:50 @ A1



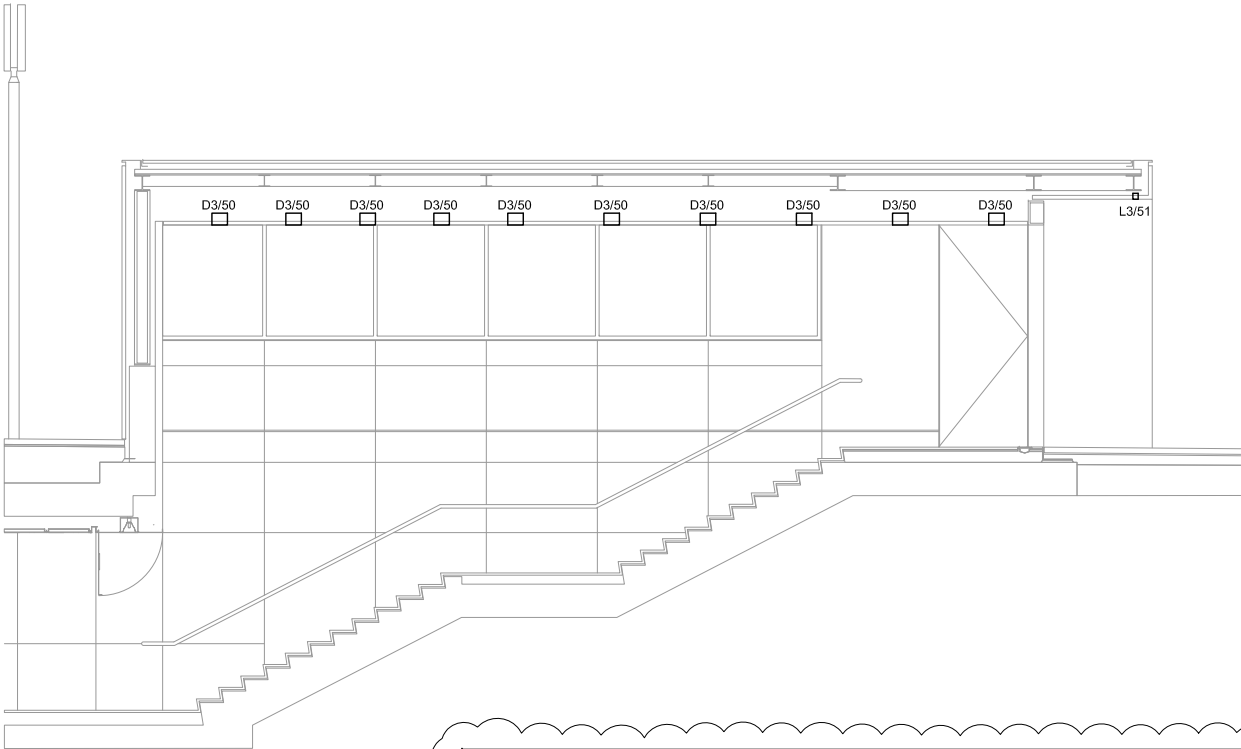
WEST ELEVATION

Euston Rd. LU Entrance, Elevation E-E, scale 1:50@ A1



SOUTH ELEVATION

Euston Rd. LU Entrance, Elevation D-D, scale 1:50@ A1



SECTION AA

Euston Rd. LU Entrance, Long Section, scale 1:50 @ A1

This drawing has been produced by Stanton Williams under an instruction by Network Rail on behalf of London Underground Ltd for submission under the Channel tunnel Rail Link Act 1996 - Schedule 6, Plans and Specification, for the following structures - The Cladding and retail extension to the Blue Egg Ventilation Shaft, the Tube Ticket Hall Main Staircase and the Euston Road Canopies.

NOT FOR CONSTRUCTION

- LUMINAIRE KEY
- B1 - IP65 25W P/M LINEAR LED LUMINAIRE, TO BE INTEGRATED INTO BENCH.
- C1 - 18M HIGH FEATURE LIGHTING COLUMN WITH MULTIPLE HEAD LED PROJECTORS. ESTIMATED WATTAGE PER 1.2KW
- C2 - 6M HIGH LED LIGHTING COLUMNS WITH MULTIPLE HEAD LED PROJECTORS. ESTIMATED WATTAGE 300W.
- D1 - IP65 10W SURFACE MOUNTED LED PROJECTOR.
- D2 - IP65 22W RECESSED LED DOWNLIGHT.
- D3 - IP65 30W LED DOWNLIGHT
- L1 - IP54 50W LINEAR LED LUMINAIRE.
- L2 - IP65 40W LINEAR LED LUMINAIRE.
- L3 - IP54 15W P/M LINEAR LED LUMINAIRE.
- L4 - IP65 36W P/M LINEAR LED LUMINAIRE.
- L5 - IP65 25W P/M LINEAR LED MODULES COMPLETE WITH WIDE BEAM DISTRIBUTION.
- L6 - IP65 30W P/M LINEAR LED LUMINAIRE.
- L7 - IP65 40W SURFACE MOUNTED LINEAR LED LUMINAIRE.
- L8 - IP65 36W SURFACE MOUNTED LINEAR LED LUMINAIRE.
- L8A - IP65 12W SURFACE MOUNTED LINEAR LED LUMINAIRE.
- L10 - IP65 70W LINEAR LED LUMINAIRE.
- L11 - IP65 36W LINEAR LED LUMINAIRE.
- P2 - IP65 30W LED PROJECTORS.
- T1 - IP65 30W IN-GROUND LED UPLIGHTER.
- U1 - IP68 36W IN - GROUND, LINEAR, ADJUSTABLE LED UPLIGHTER.
- U2 - IP68 24W IN - GROUND, LINEAR, ADJUSTABLE LED UPLIGHTER.
- U3 - IP68 12W IN - GROUND, LINEAR, ADJUSTABLE LED UPLIGHTER.

02	20-09-11	BH	TD	TD
01	29-07-11	BH	CS	CS

Issue	Date	By	Chkd	Appd
-------	------	----	------	------

Client:
Cubitt House
1 Battle Bridge Road
London N1C 4AH
Phone +44 (0)20 7147 6011
Email: KingsCrossRedevelopmentProjectDocumentControl@networkrail.co.uk



Stanton Williams
36 Graham Street
London N1 8GJ
Phone +44 (0)20 7880 6400
Email: 420@stantonwilliams.com
www.stantonwilliams.com

STANTON
WILLIAMS

studio | FRACTAL

Suite 113, The Beehive, City Place,
Gatwick, East Sussex, RH6 0PA.
Tel: 01293 804792. Email: info@studiofractal.co.uk

Job Title
**King's Cross Station
Redevelopment Programme
Package 7**

Drawing Title
Kings Cross Square
Euston Rd East and West Staircase
Canopies, Lighting Elevations

Scale at A1
1: 50

Document Reference No
ENG-DWG-SWA-SSQ-SFR-3011-05-013

Drawing Status
Planning/Grip4

SF Job No Drawing No Rev.

3011 05-013 02