



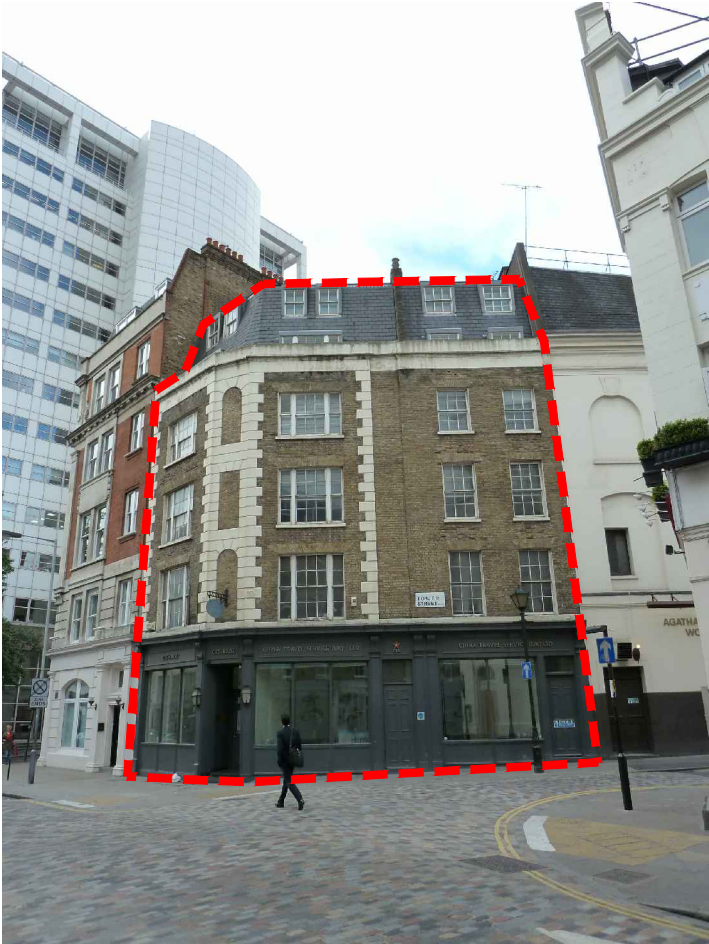
OS site plan



Aerial photograph



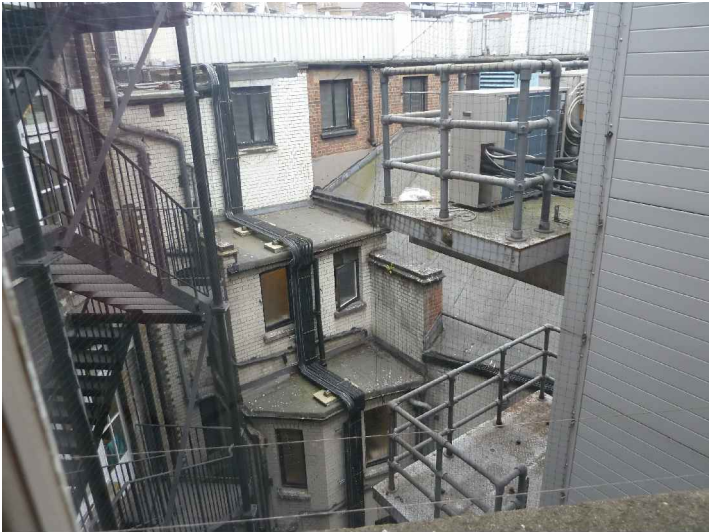
2011 09 22 ISSUED FOR PLANNING			JF	SR
rev	date	description	drawn	checked
001				
job no. 11024		7 Upper St Martin's Lane, London		
		OS site plan and aerial		
		1:1250@A3		



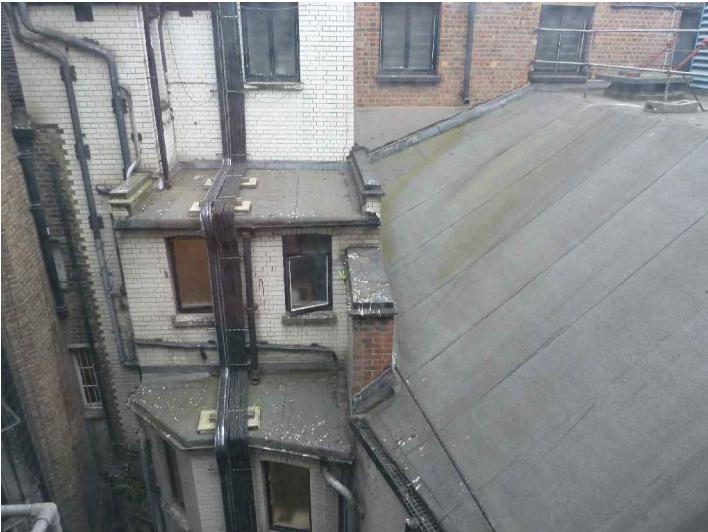
1. View from Monmouth Street looking south-west



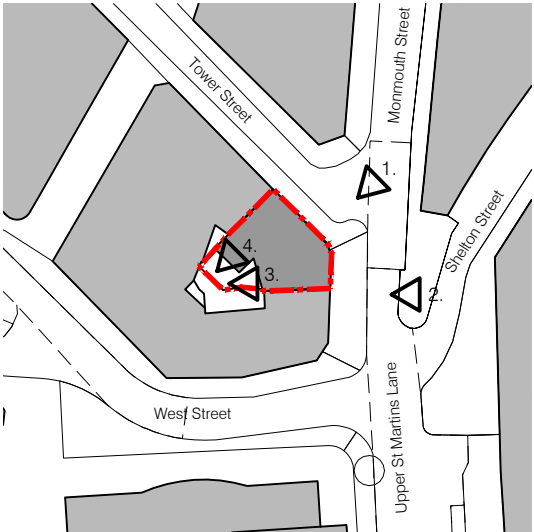
2.View from Upper St Martin's Street looking west



3. Internal light-well view.



4. Internal light-well view.



Key plan



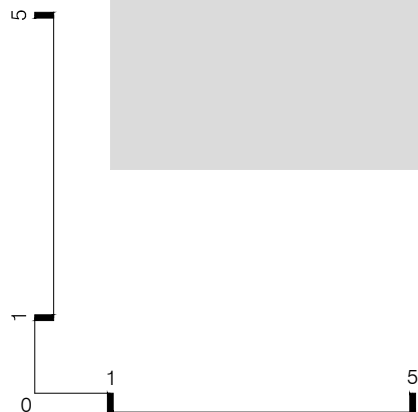
dwg no.	job no. 11024
002	7 Upper St Martin's Lane, London
	Existing building photographs
	nts

2011 09 22 ISSUED FOR PLANNING		
rev	date	description

JF	SR
drawn	checked

MSMR Architects Ltd. The Old School, Exton Street,
London. SE1 8UE 1 +44 (0)20 7928 676 7
©2008 do not scale from drawing report discrepancies immediately





approx north

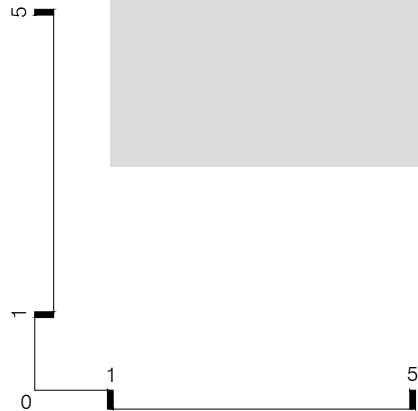
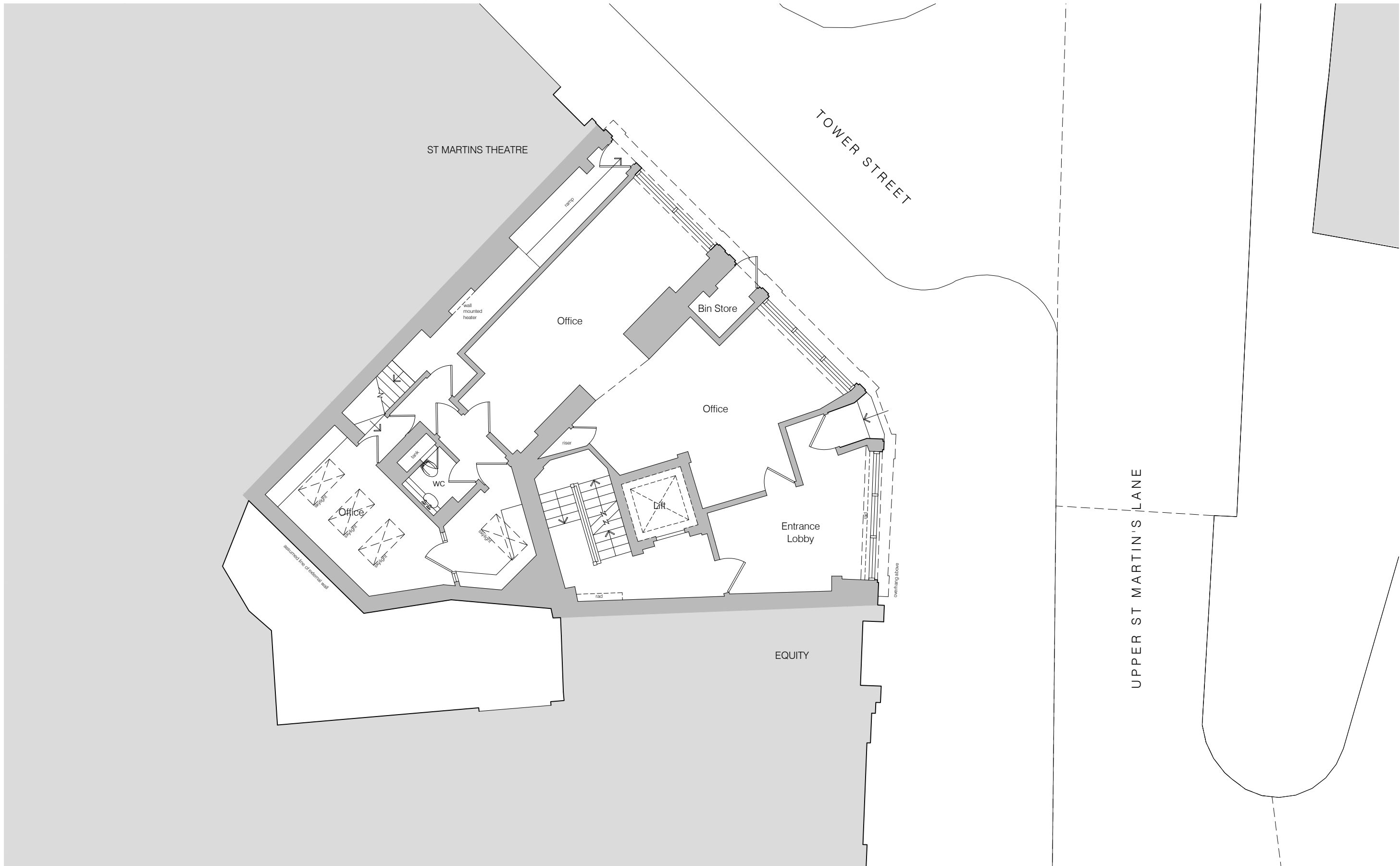
2011 09 22 ISSUED FOR PLANNING		
rev	date	description

JF	SR
drawn	checked

MSMR Architects Ltd. The Old School, Exton Street,
London. SE1 8UE 1 +44 (0)20 7928 676 7
©2008 do not scale from drawing report discrepancies immediately



009	job no.	11024
	7 Upper St Martin's Lane	
	Existing plan: basement level	
	1:50 @ A1	1:100 @ A3



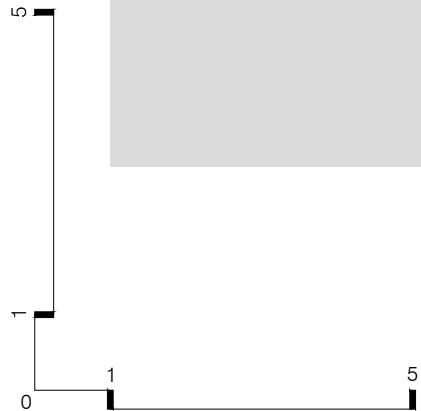
rev	date	description
2011 09 22	ISSUED FOR PLANNING	

drawn	checked
JF	SR

MSMR Architects Ltd. The Old School, Exton Street,
London. SE1 8UE 1 +44 (0)20 7928 676 7
©2008 do not scale from drawing report discrepancies immediately



dwg no.	job no.
010	11024
7 Upper St Martin's Lane	
Existing plan: ground floor level	
1:50 @ A1 1:100 @ A3	

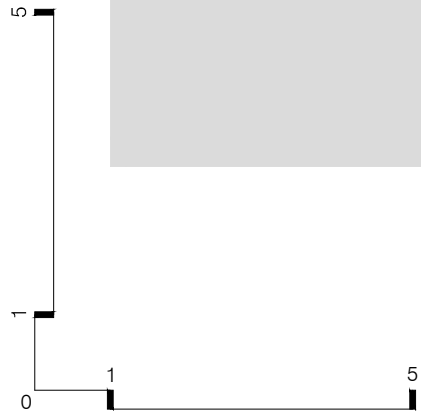


2011 09 22 ISSUED FOR PLANNING		
rev	date	description

JF	SR
drawn	checked

dwg no.	job no.
011	11024
	7 Upper St Martin's Lane
	Existing plan: first floor level
1:50 @ A1 1:100 @ A3	

MSMR Architects Ltd. The Old School, Exton Street, London. SE1 8UE 1 +44 (0)20 7928 676 7
©2008 do not scale from drawing report discrepancies immediately



2011 09 22 ISSUED FOR PLANNING		
rev	date	description

JF	SR
drawn	checked

012

ST. MARTIN'S THEATRE

EQUITY

11024

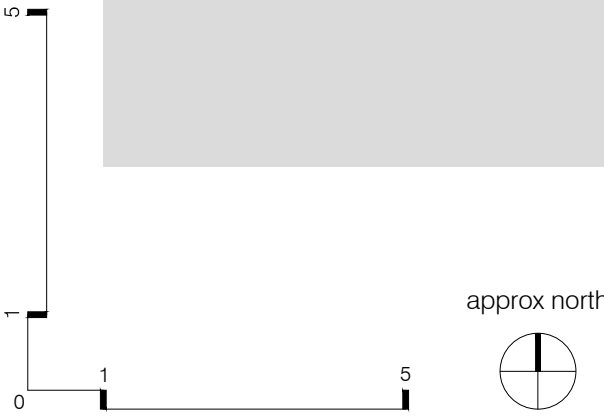
7 Upper St Martin's Lane

Existing plan: second floor level

1:50 @ A1 1:100 @ A3

MSMR Architects Ltd. The Old School, Exton Street, London. SE1 8UE 1 +44 (0)20 7928 676 7

©2008 do not scale from drawing report discrepancies immediately



rev	date	description
2011 09 22	ISSUED FOR PLANNING	

drawn	checked
JF	SR

013

ST. MARTIN'S THEATRE

EQUITY

11024

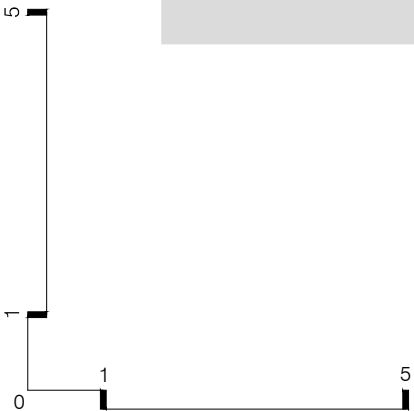
7 Upper St Martin's Lane

Existing plan: third floor level

1:50 @ A1 1:100 @ A3

MSMR Architects Ltd. The Old School, Exton Street, London. SE1 8UE 1 +44 (0)20 7928 676 7

©2008 do not scale from drawing report discrepancies immediately



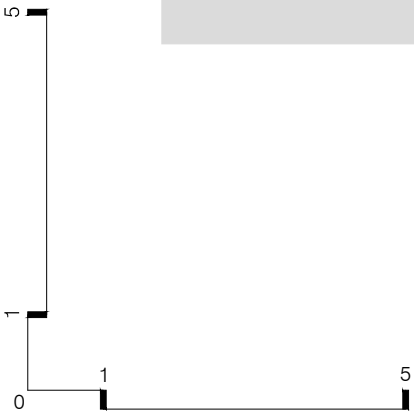
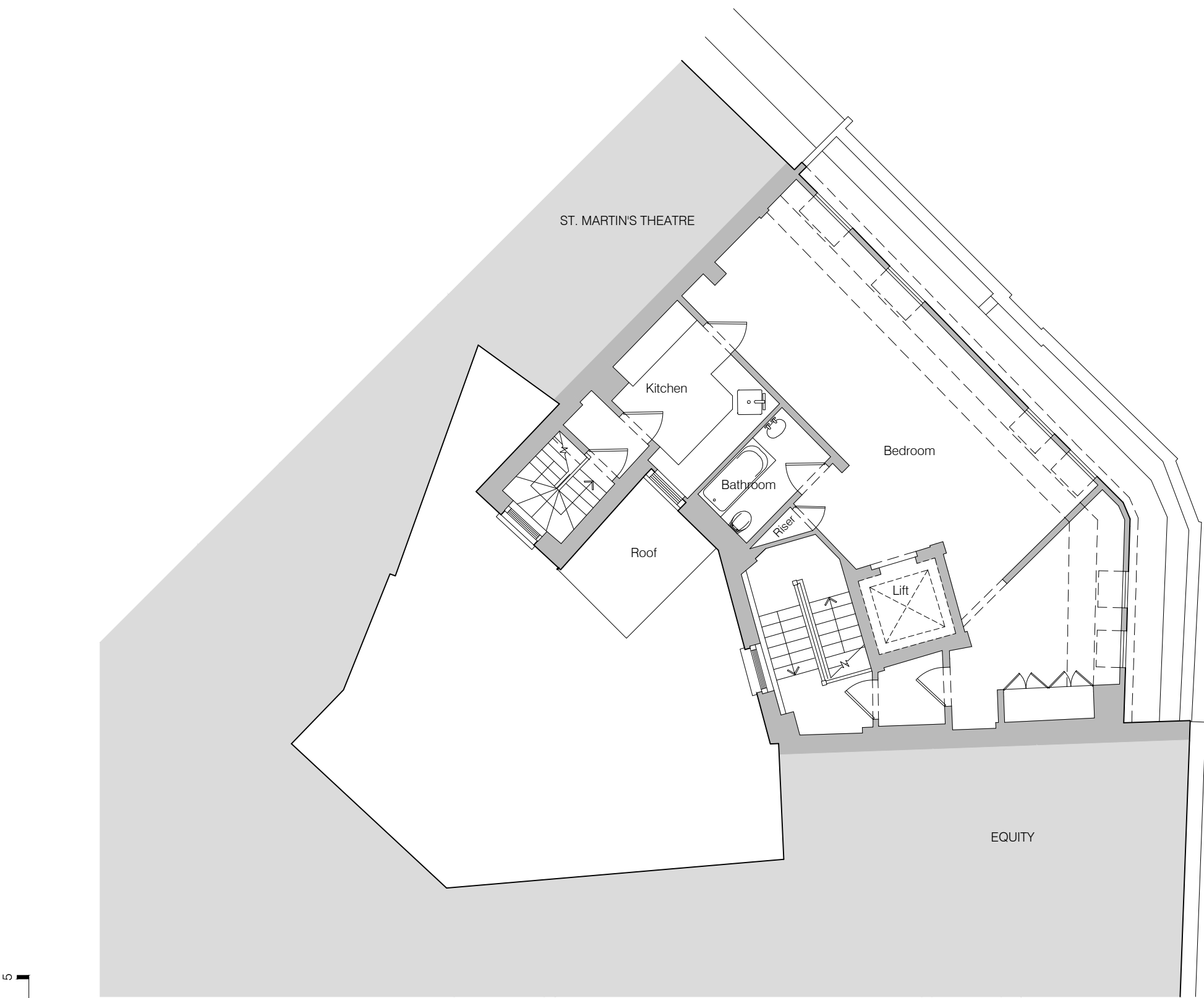
approx north

2011 09 22 ISSUED FOR PLANNING		
rev	date	description

JF	SR
drawn	checked

dwg no.	job no.
014	11024
	7 Upper St Martin's Lane
	Existing plan: fourth floor level
1:50 @ A1 1:100 @ A3	

MSMR Architects Ltd. The Old School, Exton Street, London. SE1 8UE 1 +44 (0)20 7928 676 7
©2008 do not scale from drawing report discrepancies immediately



approx north

2011 09 22	ISSUED FOR PLANNING	
rev	date	description

JF	SR
drawn	checked

015

ST. MARTIN'S THEATRE

EQUITY

11024

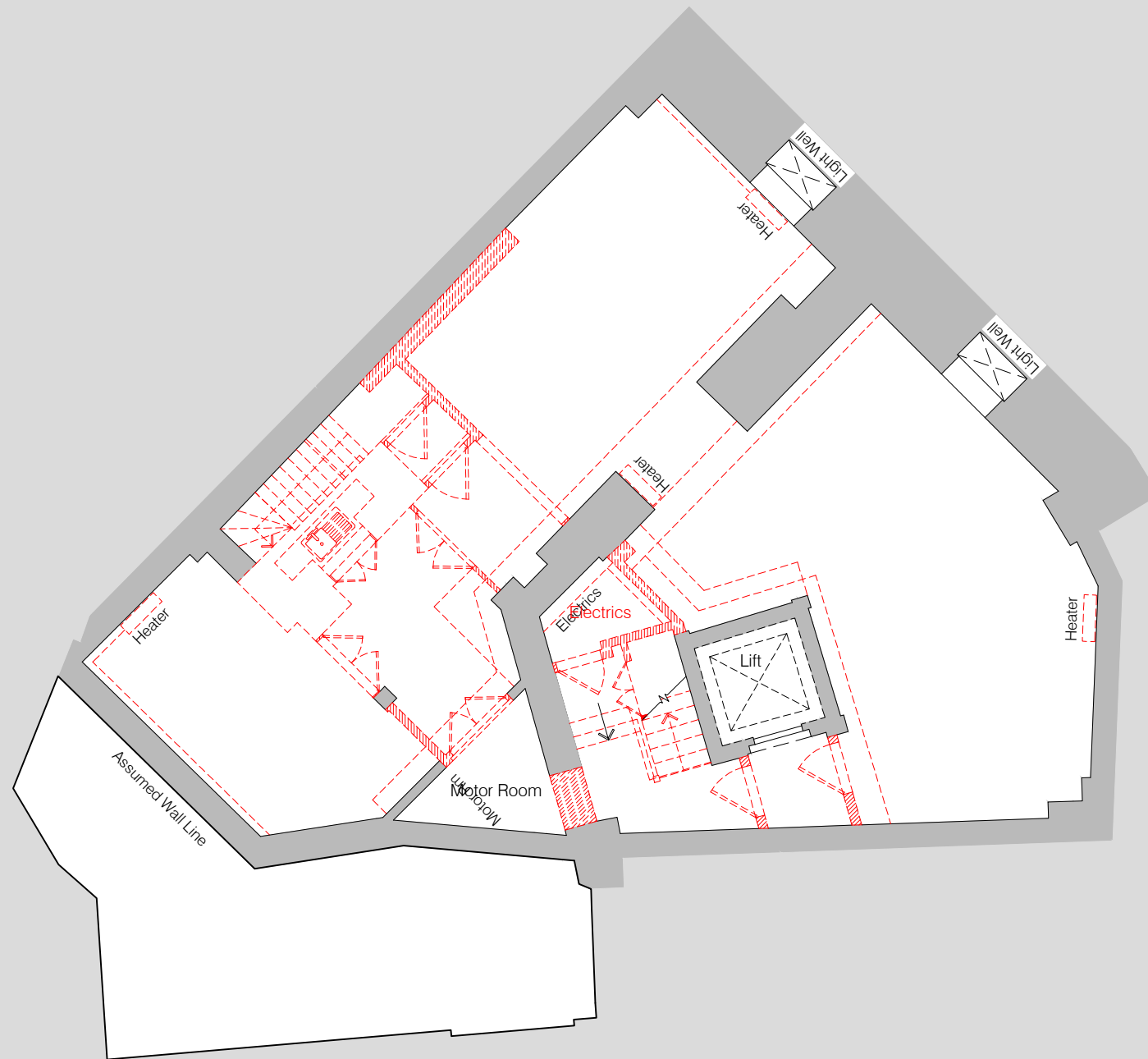
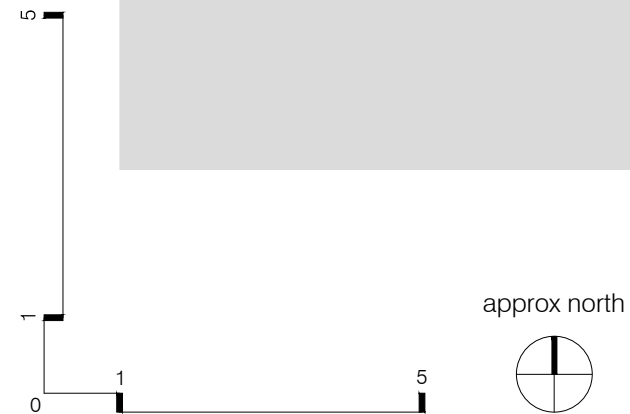
7 Upper St Martin's Lane

Existing plan: fifth floor level

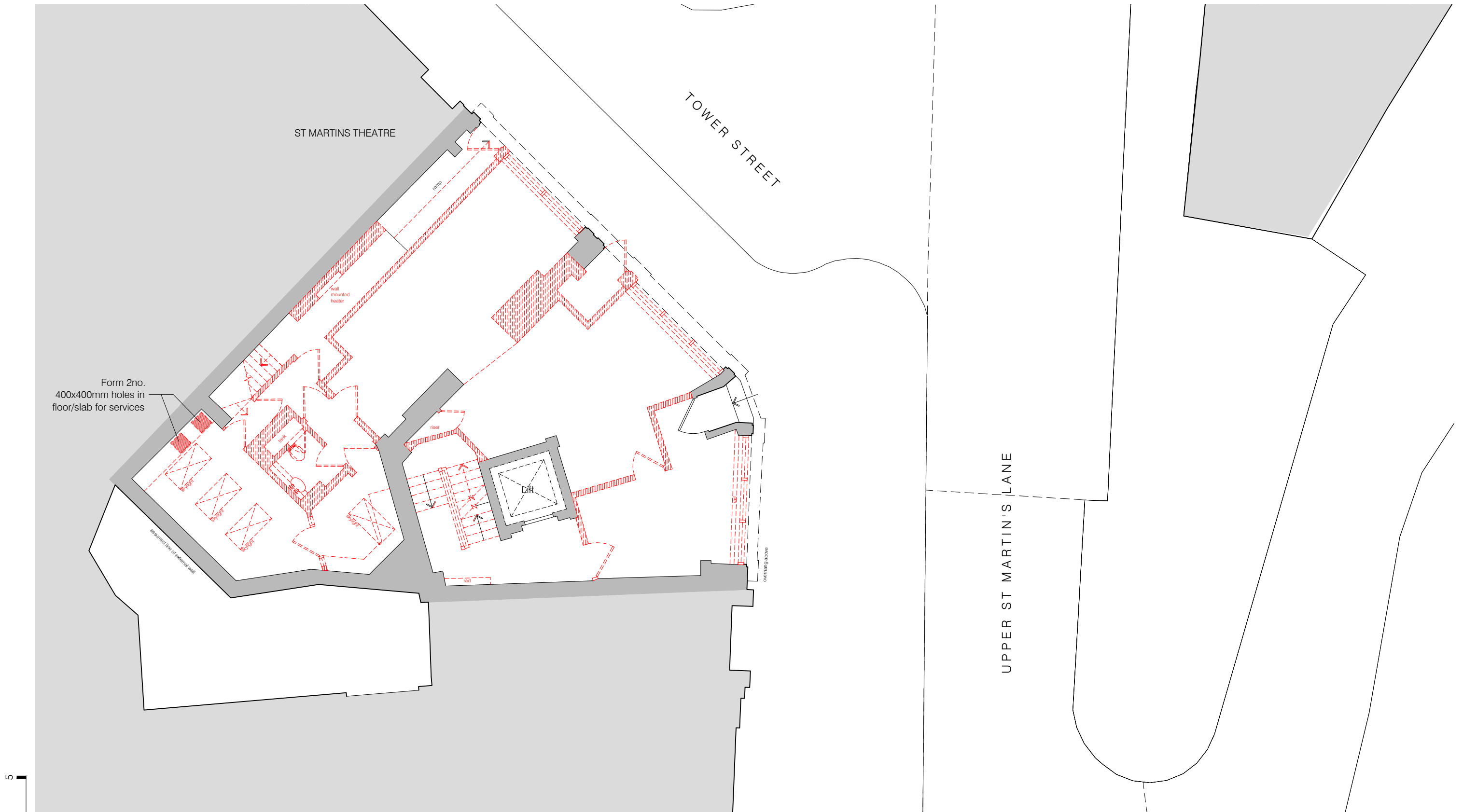
1:50 @ A1 1:100 @ A3

MSMR Architects Ltd. The Old School, Exton Street, London. SE1 8UE 1 +44 (0)20 7928 676 7

©2008 do not scale from drawing report discrepancies immediately



	2011 09 22	ISSUED FOR PLANNING	JF	SR
	2011 09 16	Draft Planning Issue	JF	SR
rev	date	description	drawn	checked
<hr/>				
dwg no.		job no.	11024	
019		7 Upper St Martin's Lane		
<hr/>				
Demolition plan: lower ground floor level				
<hr/>				
		1:50 @ A1 1:100@A3		



A	2011 09 22	ISSUED FOR PLANNING	JF	SR
	2011 09 16	Draft Planning Issue	JF	SR
rev	date	description	drawn	checked
dwg no.		job no.	11024	
020 A		7 Upper St Martin's Lane		
		Demolition plan: ground floor level		
		1:50 @ A1 1:100@A3		





2011 09 22 ISSUED FOR PLANNING			JF	SR
2011 09 16 Draft Planning Issue			JF	SR
rev	date	description	drawn	checked
11024				
7 Upper St Martin's Lane				
Demolition plan: first floor level				
1:50 @ A1 1:100@A3				



2011 09 22 ISSUED FOR PLANNING			JF	SR
2011 09 16 Draft Planning Issue			JF	SR
rev	date	description	drawn	checked
022			11024	
			7 Upper St Martin's Lane	
			Demolition plan: second floor level	
			1:50 @ A1 1:100@A3	
MSMR Architects Ltd. The Old School, Exton Street, London. SE1 8UE 1 +44 (0)20 7928 676 7			msmr	
©2008 do not scale from drawing report discrepancies immediately				

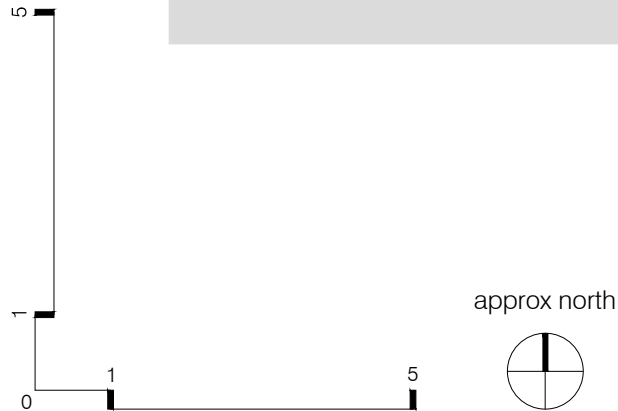
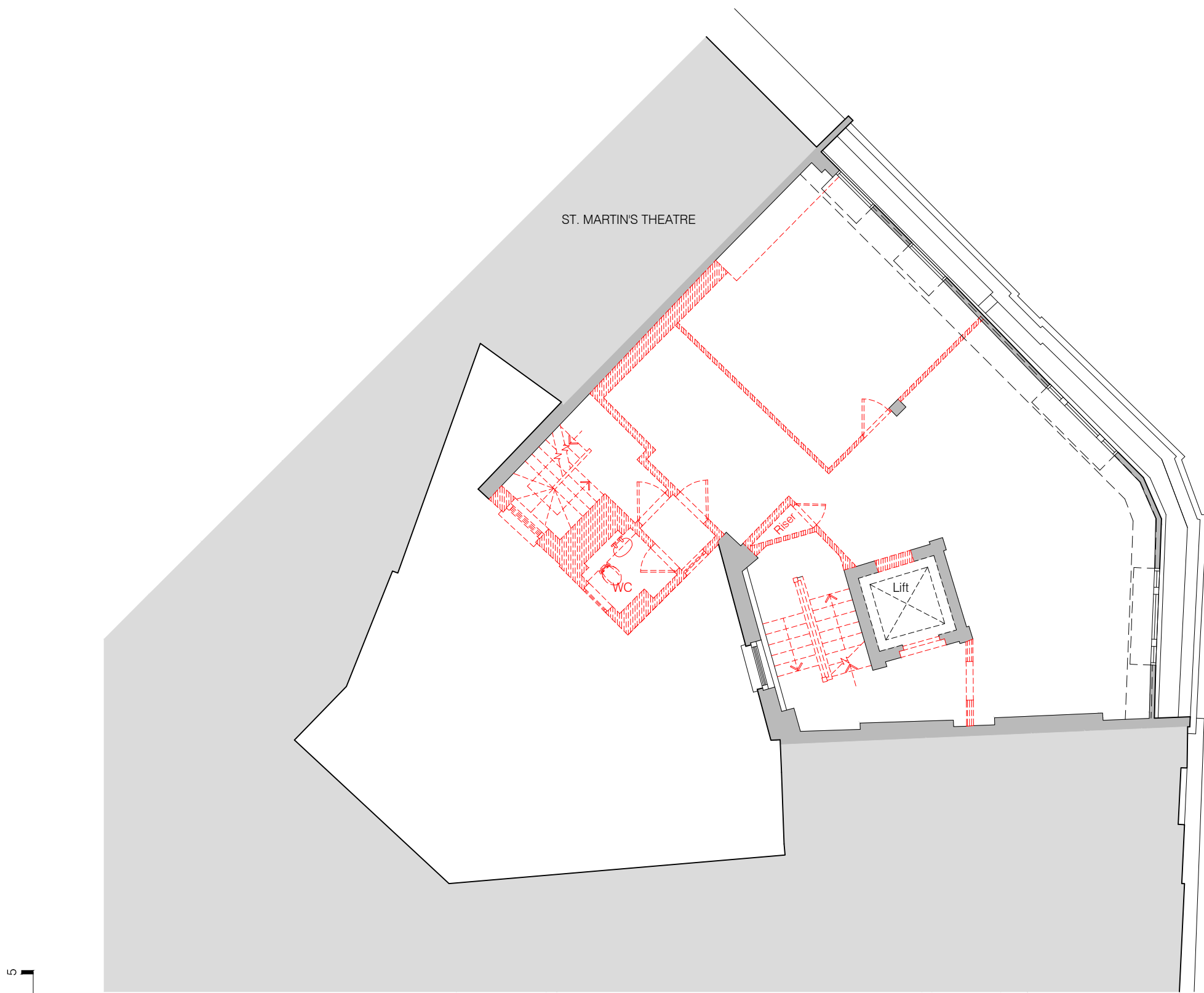


2011 09 22 ISSUED FOR PLANNING			JF	SR
2011 09 16 Draft Planning Issue			JF	SR
rev	date	description	drawn	checked
dwg no.			job no.	
023			11024	
			7 Upper St Martin's Lane	
			Demolition plan: third floor level	
			1:50 @ A1 1:100@A3	
<hr/>				

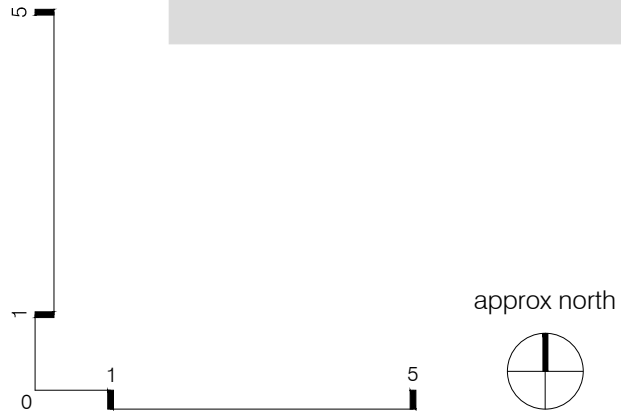
MSMR Architects Ltd. The Old School, Exton Street,
London. SE1 8UE 1 +44 (0)20 7928 676 7

©2008 do not scale from drawing report discrepancies immediately

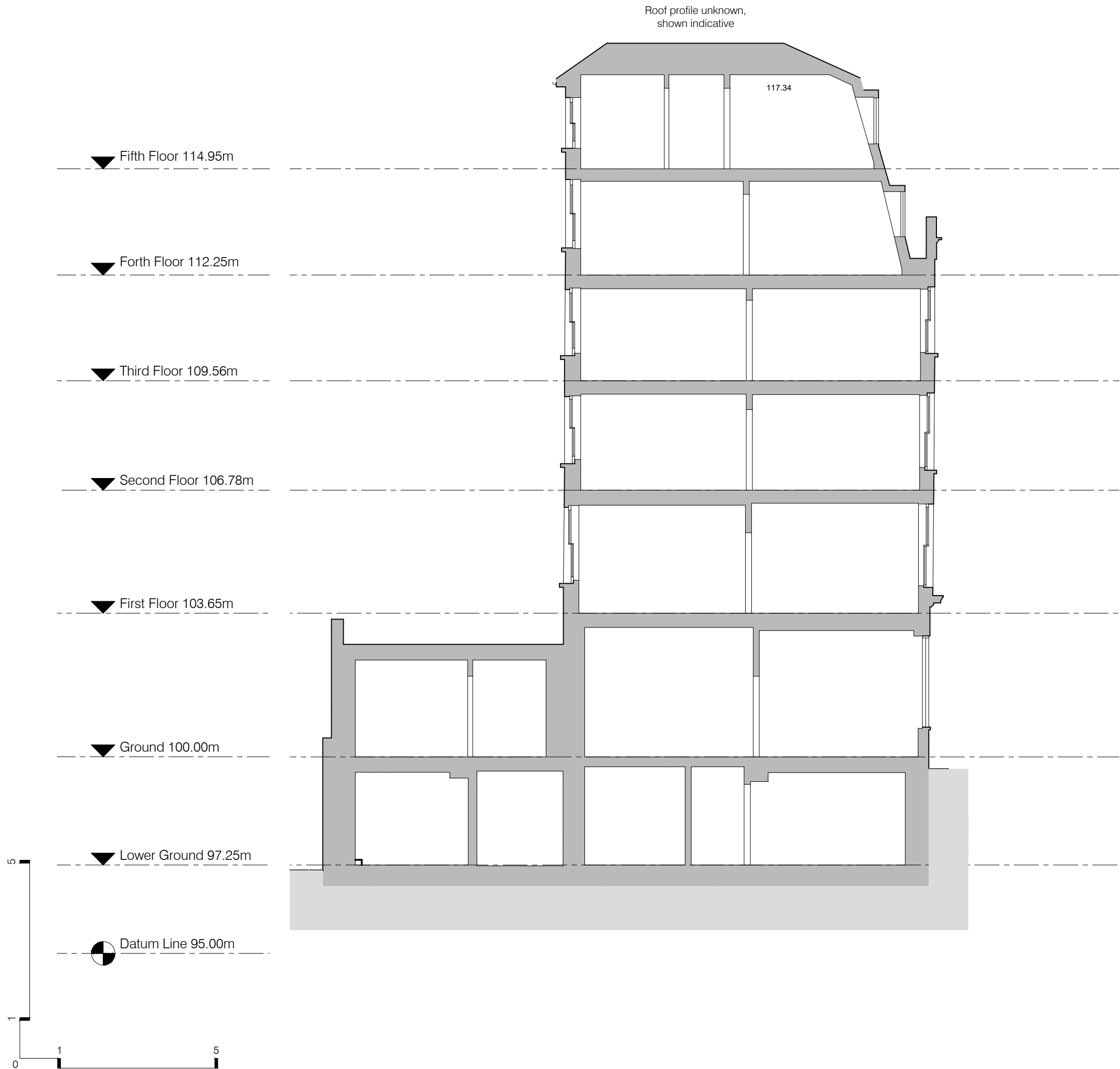


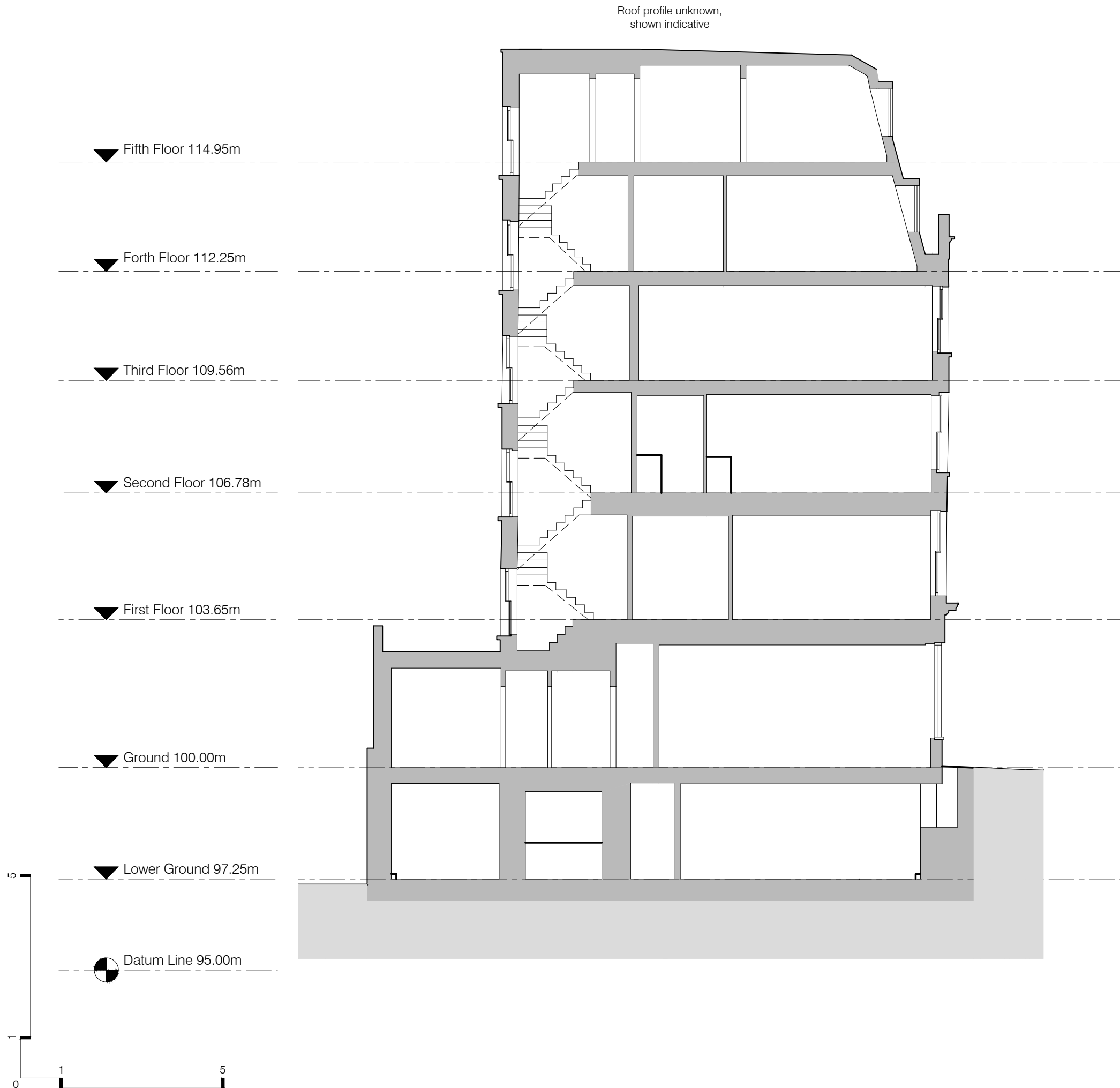


2011 09 22	ISSUED FOR PLANNING	JF	SR	
2011 09 16	Draft Planning Issue	JF	SR	
rev	date	description	drawn	checked
<hr/>				
dwg no.		job no.	11024	
			7 Upper St Martin's Lane	
			<hr/>	
			Demolition plan: fourth floor level	
			<hr/>	
			1:50 @ A1 1:100@A3	

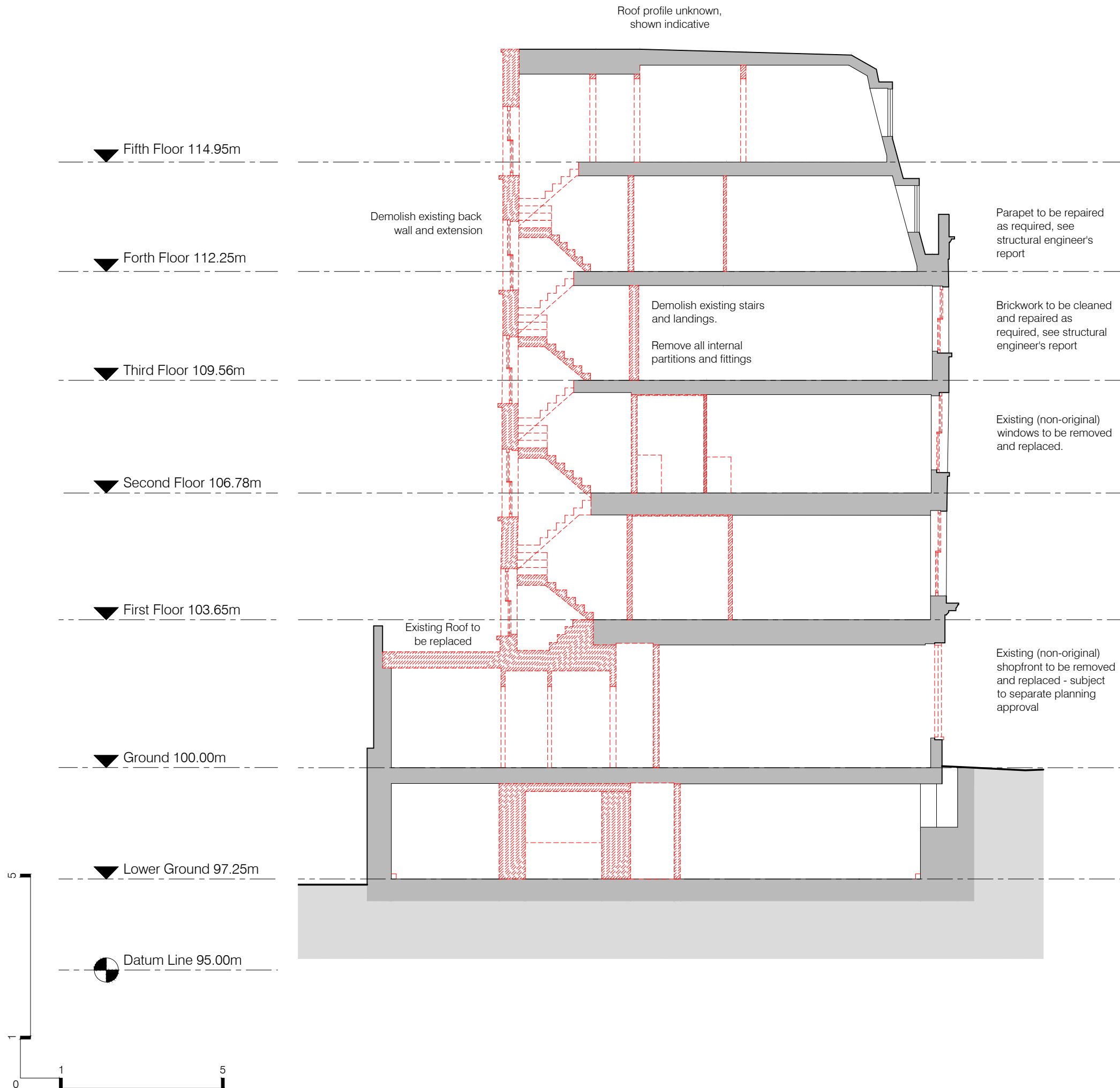


2011 09 22		ISSUED FOR PLANNING	JF	SR
2011 09 16		Draft Planning Issue	JF	SR
rev	date	description	drawn	checked
dwg no.		job no.	11024	
025		7 Upper St Martin's Lane		
		Demolition plan: fifth floor level		
		1:50 @ A1 1:100@A3		

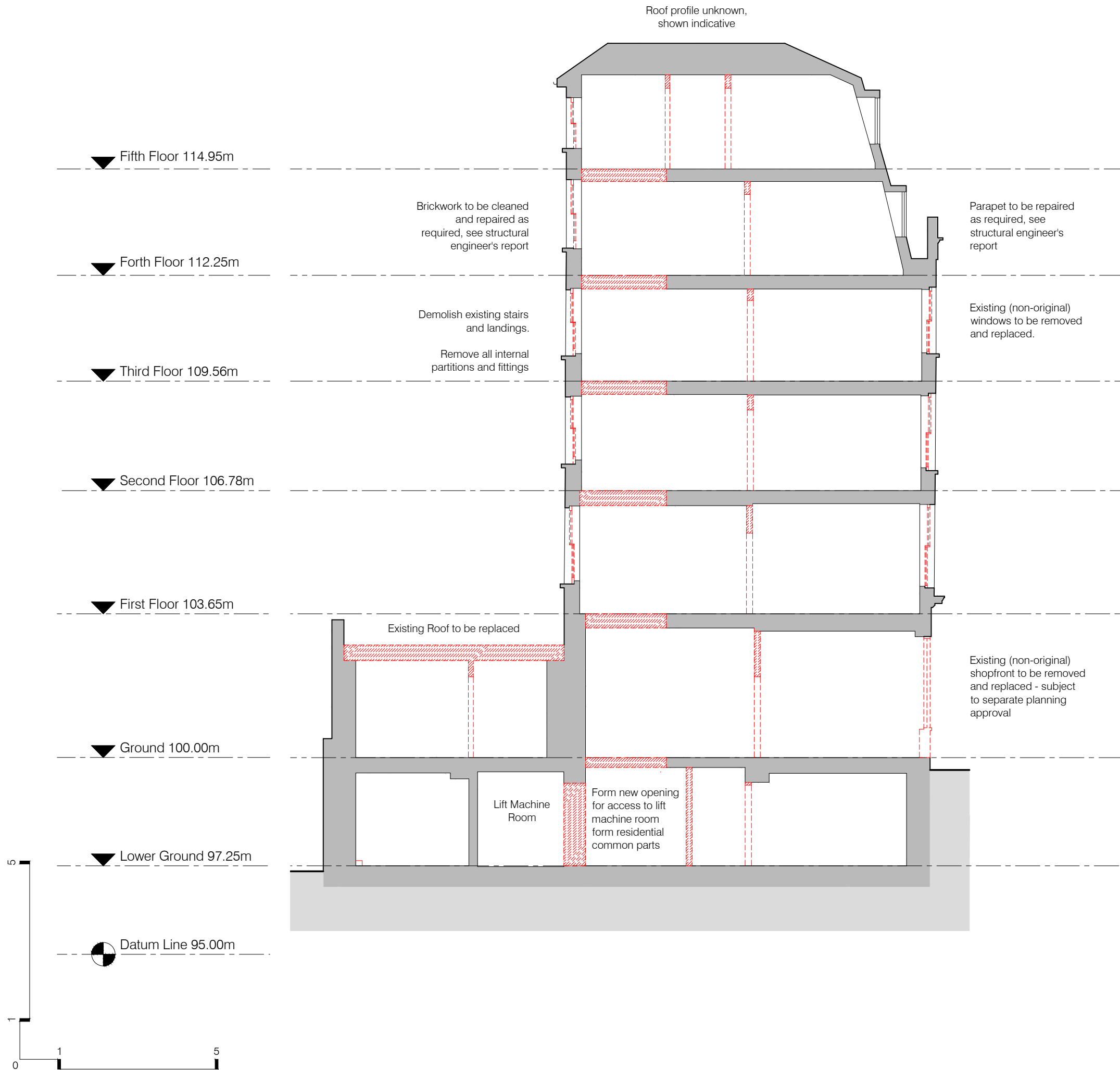




2011 09 22 ISSUED FOR PLANNING			JF	SR
rev	date	description	drawn	checked
dwg no.			job no. 11024	
040			7 Upper St Martin's Lane	
			Existing Section A-A	
			1:50 @ A1 1:100@A3	



2011 09 22	ISSUED FOR PLANNING	JF	SR	
2011 09 16	Draft Planning Issue	JF	SR	
rev	date	description	drawn	checked
dwg no.		job no. 11024		
050		7 Upper St Martin's Lane		
		Demolition Section A-A		
		1:50 @ A1 1:100@A3		
MSMR Architects Ltd. The Old School, Exton Street, London. SE1 8UE 1 +44 (0)20 7928 676 7				
©2008 do not scale from drawing report discrepancies immediately				
				msmr



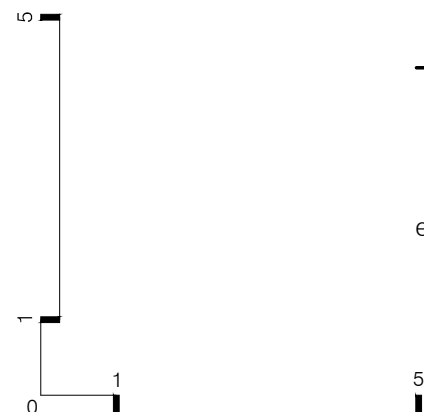
2011 09 22	ISSUED FOR PLANNING	JF	SR	
2011 09 16	Draft Planning Issue	JF	SR	
rev	date	description	drawn	checked
dwg no.		job no. 11024		
051		7 Upper St Martin's Lane		
		Demolition Section B-B		
		1:50 @ A1 1:100@A3		



elevation 1: from upper st. martin's lane



elevation 2: from tower street



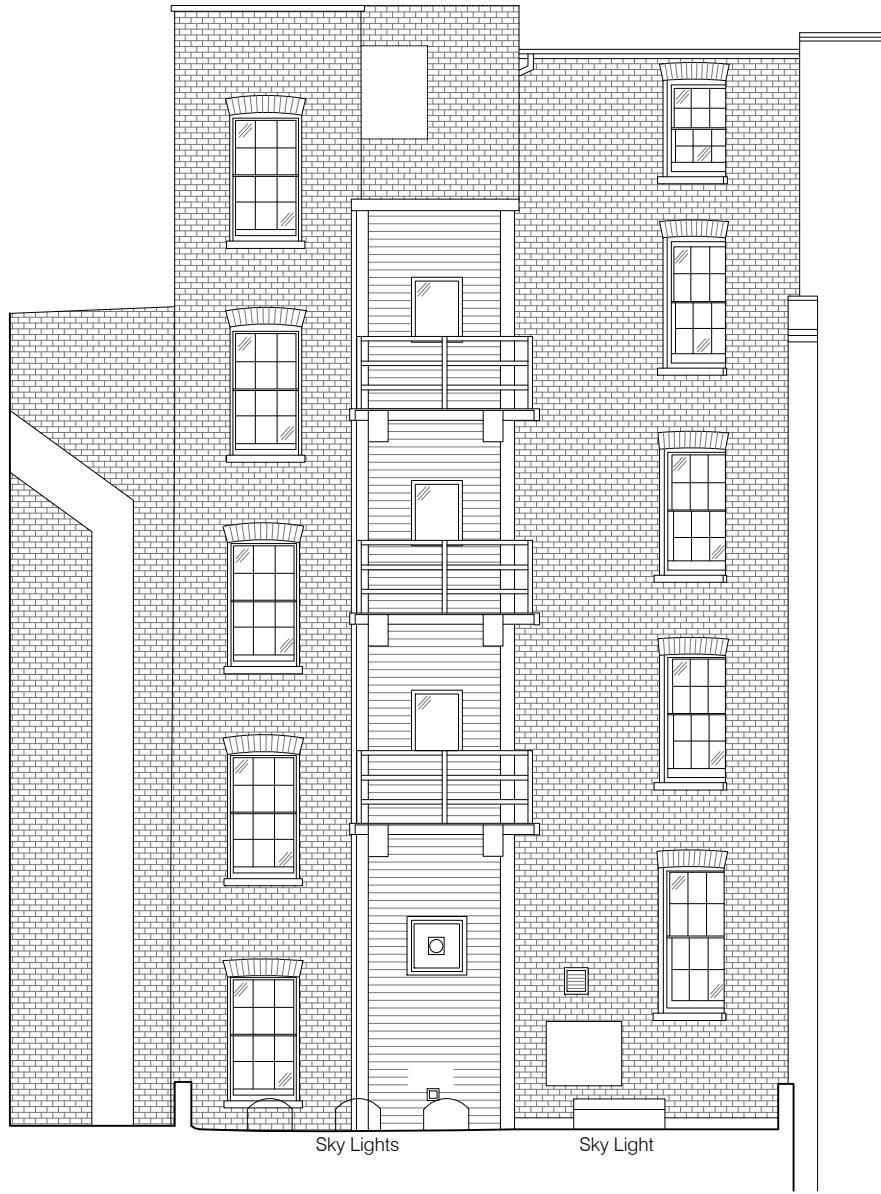
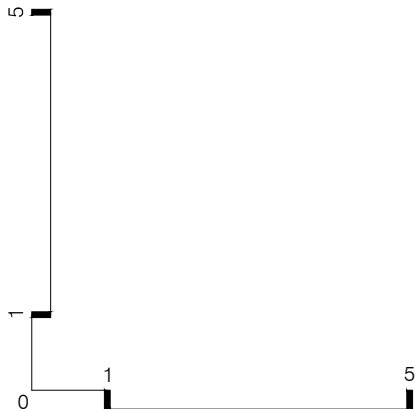
rev	date	description
2011 09 22	ISSUED FOR PLANNING	

drawn	checked
JF	SR

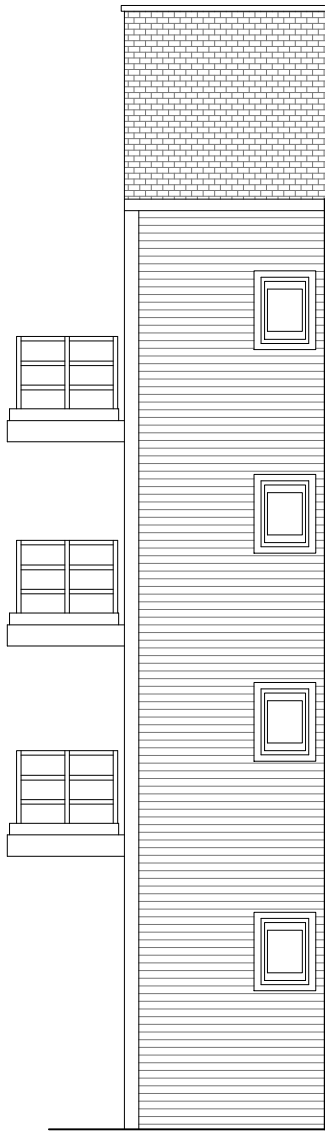
MSMR Architects Ltd. The Old School, Exton Street,
London. SE1 8UE 1 +44 (0)20 7928 676 7
©2008 do not scale from drawing report discrepancies immediately



dwg no.	job no.
070	11024
	7 Upper St Martin's Lane
	Existing elevations: street elevations
	1:50 @ A1 1:100 @ A3



elevation 3



elevation 4

2011 09 22 ISSUED FOR PLANNING		
rev	date	description

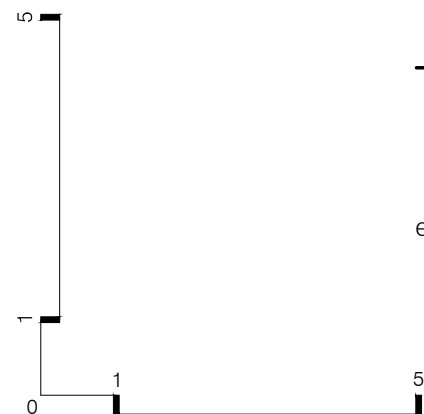
JF	SR
drawn	checked



elevation 1: from upper st. martin's lane



elevation 2: from tower street



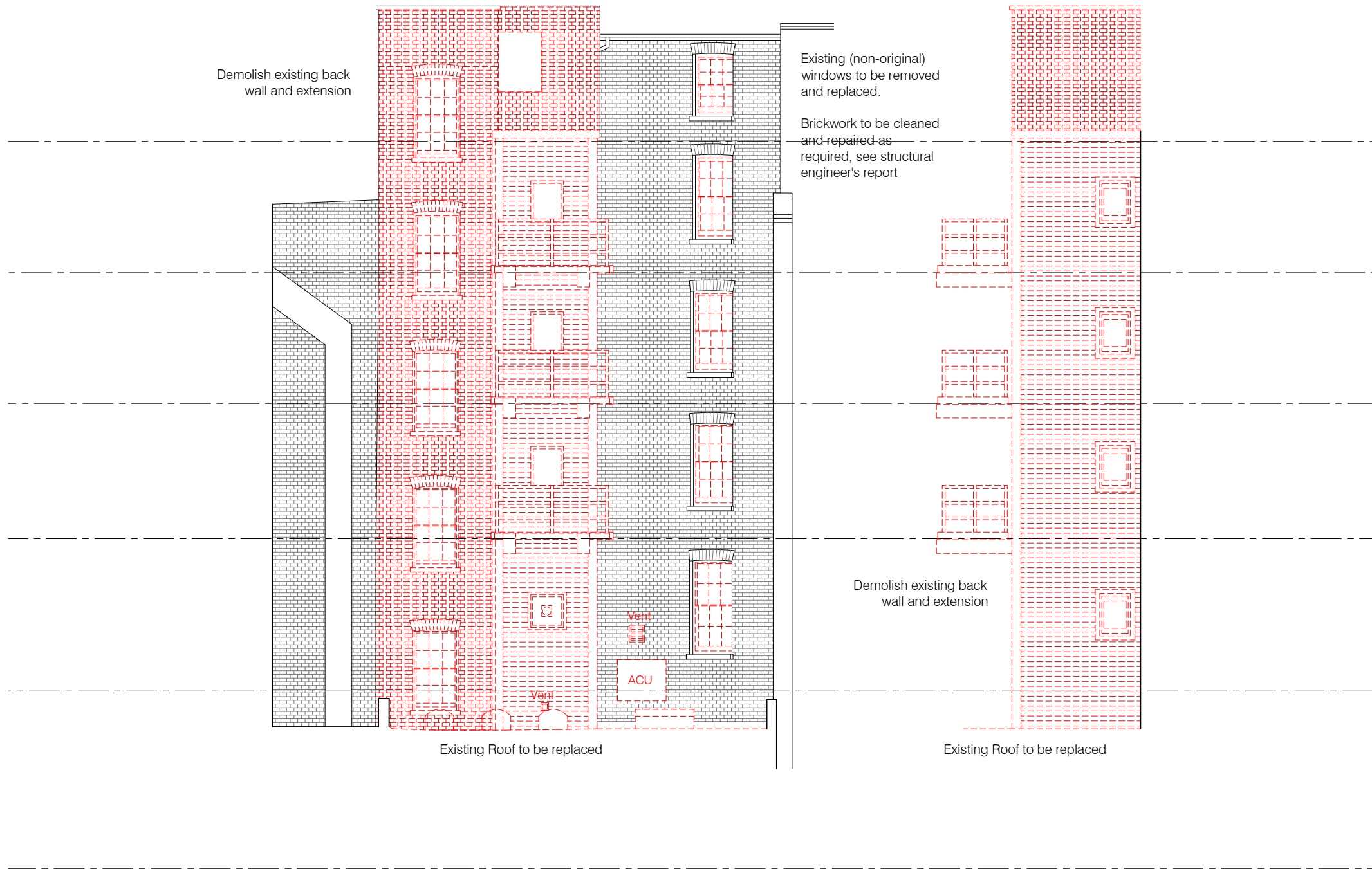
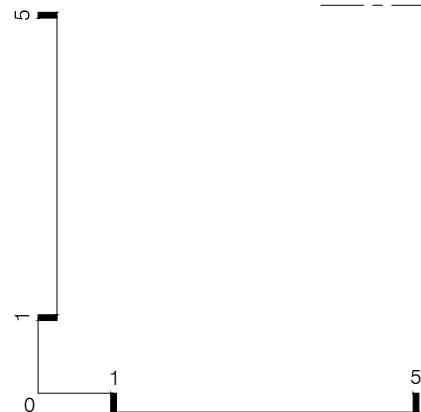
rev	date	description
2011 09 22	ISSUED FOR PLANNING	

drawn	checked
JF	SR

MSMR Architects Ltd. The Old School, Exton Street,
London. SE1 8UE 1 +44 (0)20 7928 676 7
©2008 do not scale from drawing report discrepancies immediately



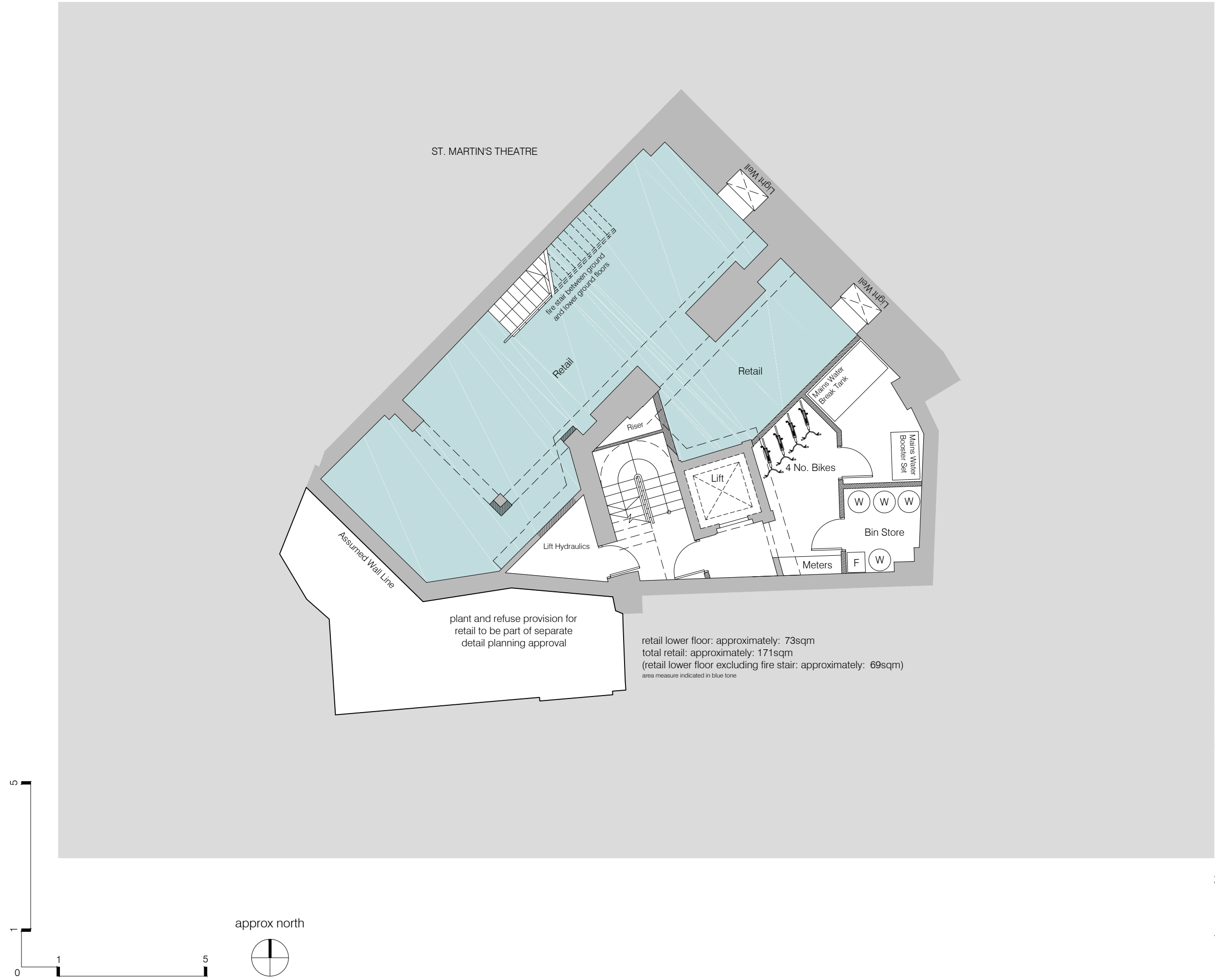
dwg no.	job no.
070	11024
	7 Upper St Martin's Lane
	Existing elevations: street elevations
	1:50 @ A1 1:100 @ A3



elevation 3

elevation 4

2011 09 22	ISSUED FOR PLANNING	JF	SR	
2011 09 16	Draft Planning Issue	JF	SR	
rev	date	description	drawn	checked
<hr/>				
dwg no.	job no.	11024		
		7 Upper St Martin's Lane		
		Demolition elevations: lightwell elevations		
		1:50 @ A1 1:100@A3		

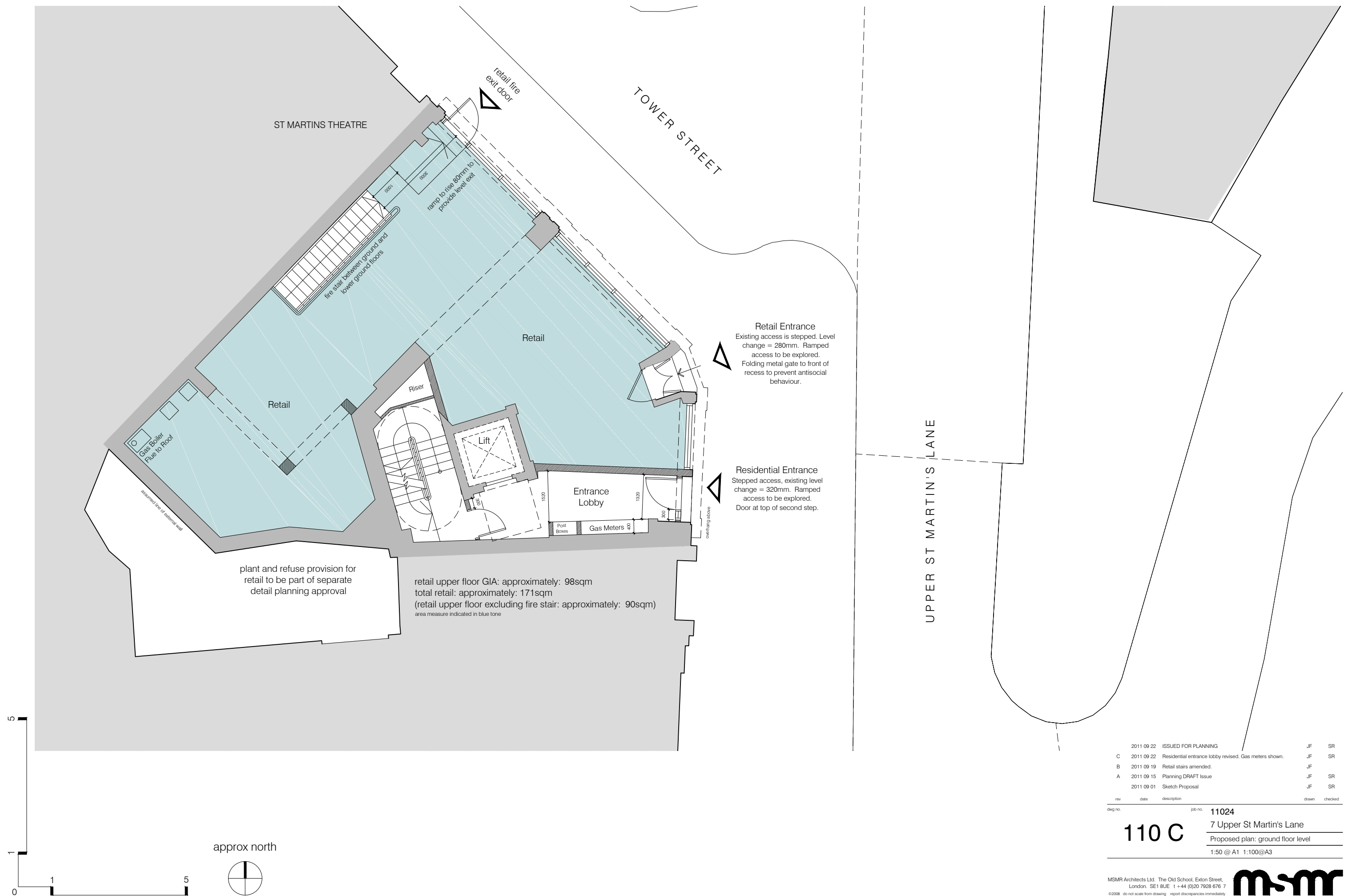


2011 09 22	ISSUED FOR PLANNING	JF	SR
C 2011 09 20	Plant room added for mains water tank and booster set.	JF	SR
B 2011 09 19	retail stairs amended	JF	
A 2011 09 15	Planning DRAFT Issue	JF	SR
2011 09 01	Sketch Proposal	JF	SR

rev	date	description	drawn	checked
-----	------	-------------	-------	---------

11024
7 Upper St Martin's Lane
Proposed plan: lower ground floor level
1:50 @ A1 1:100@A3





	2011 09 22	ISSUED FOR PLANNING	JF	SR
C	2011 09 22	Residential entrance lobby revised. Gas meters shown.	JF	SR
B	2011 09 19	Retail stairs amended.	JF	
A	2011 09 15	Planning DRAFT Issue	JF	SR
	2011 09 01	Sketch Proposal	JF	SR
rev	date	description	drawn	checked

110 C

7 Upper St Martin's Lane

Proposed plan: ground floor level

1:50 @ A1 1:100@A3

ST. MARTIN'S THEATRE

Bedroom 1

Bedroom 2

B 1

B 2

Reception

Lift

Dining

Kitchen

2 bed unit: approximately: 89sqm
area measure indicated in orange tone

New skylights
New single ply membrane
roof over existing ground
floor extension

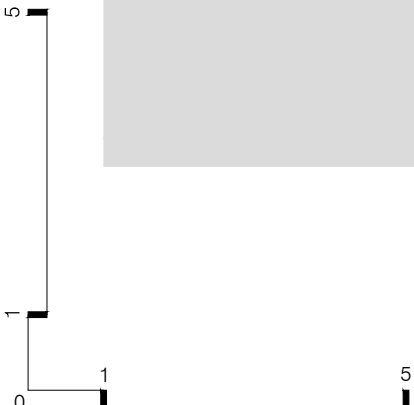
Rebuild rear wall in brick to match
existing, new windows to match
existing

Area for Plant

Boiler Flue
Exhaust

Riser

Boiler



approx north



	2011 09 22	ISSUED FOR PLANNING	JF	SR
A	2011 09 15	Planning DRAFT Issue	JF	SR
	2011 09 01	Sketch Proposal	JF	SR

rev	date	description	drawn	checked
-----	------	-------------	-------	---------

dwg no. job no. **11024**

111 A

7 Upper St Martin's Lane

Proposed plan: first floor level

1:50 @ A1 1:100@A3

MSMR Architects Ltd. The Old School, Exton Street,
London. SE1 8UE 1 +44 (0)20 7928 676 7
©2008 do not scale from drawing report discrepancies immediately





2 bed unit: approximately: 89sqm
area measure indicated in orange tone

	2011 09 22	ISSUED FOR PLANNING	JF	SR
A	2011 09 15	Planning DRAFT Issue	JF	SR
	2011 09 01	Sketch Proposal	JF	SR
rev	date	description	drawn	checked

112 A

11024

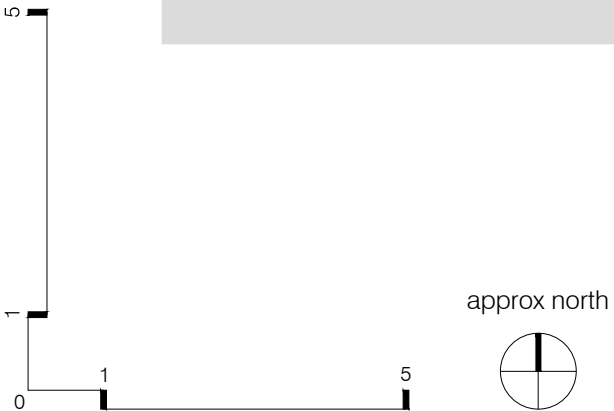
7 Upper St Martin's Lane

Proposed plan: second floor level

1:50 @ A1 1:100@A3

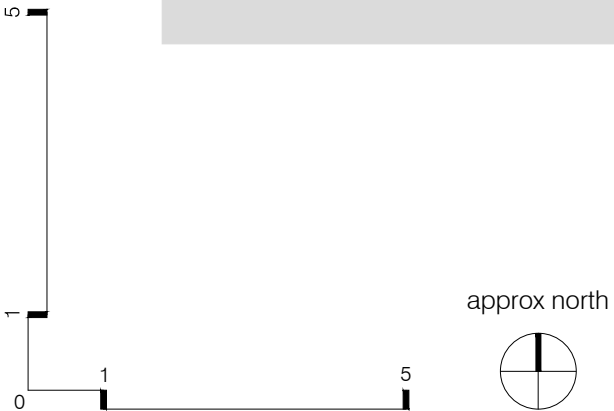


A	2011 09 22	ISSUED FOR PLANNING	JF	SR
	2011 09 15	Planning DRAFT Issue	JF	SR
	2011 09 01	Sketch Proposal	JF	SR
rev	date	description	drawn	checked
113 A		11024	7 Upper St Martin's Lane	
			Proposed plan: third floor level	
			1:50 @ A1 1:100@A3	



B	2011 09 22	ISSUED FOR PLANNING	JF	SR
A	2011 09 15	Planning DRAFT Issue	JF	SR
	2011 09 01	Sketch Proposal	JF	SR
rev	date	description	drawn	checked
114 B				





	2011 09 22	ISSUED FOR PLANNING	JF	SR
A	2011 09 15	Planning DRAFT Issue	JF	SR
	2011 09 01	Sketch Proposal	JF	SR

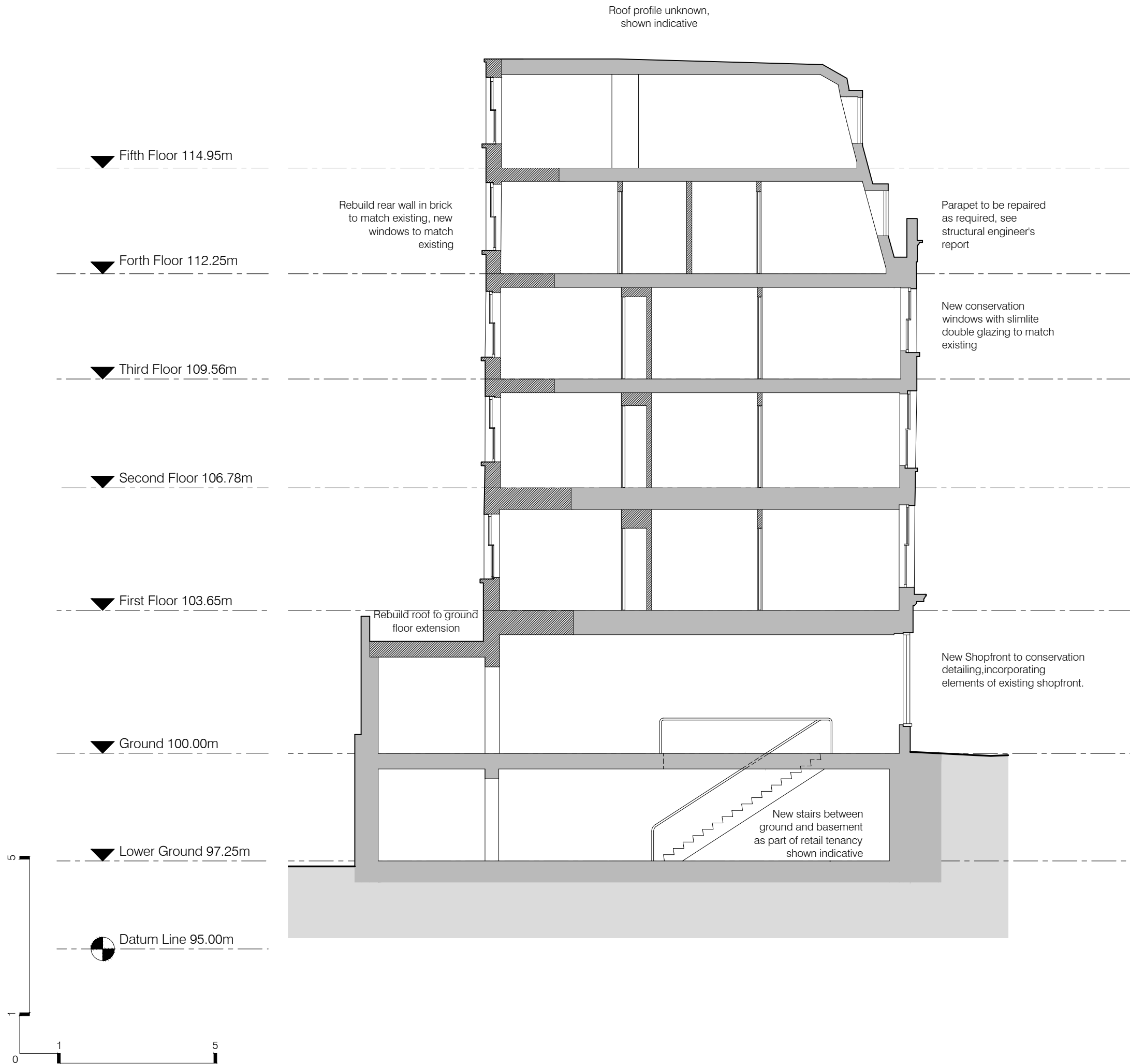
rev	date	description	drawn	checked
-----	------	-------------	-------	---------

dwg no. job no. **11024**

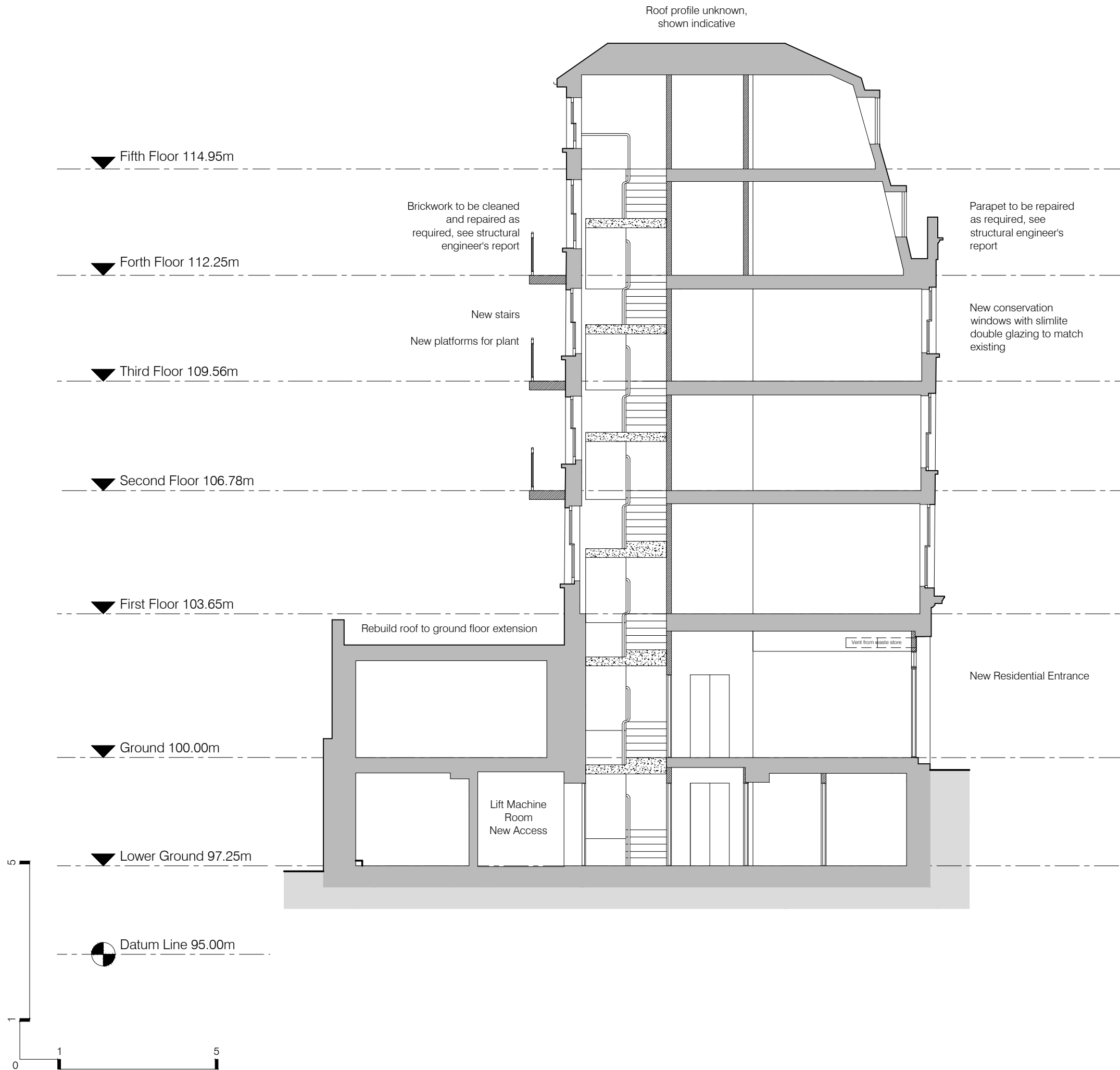
115 A 7 Upper St Martin's Lane

Proposed plan: fifth floor level

1:50 @ A1 1:100@A3



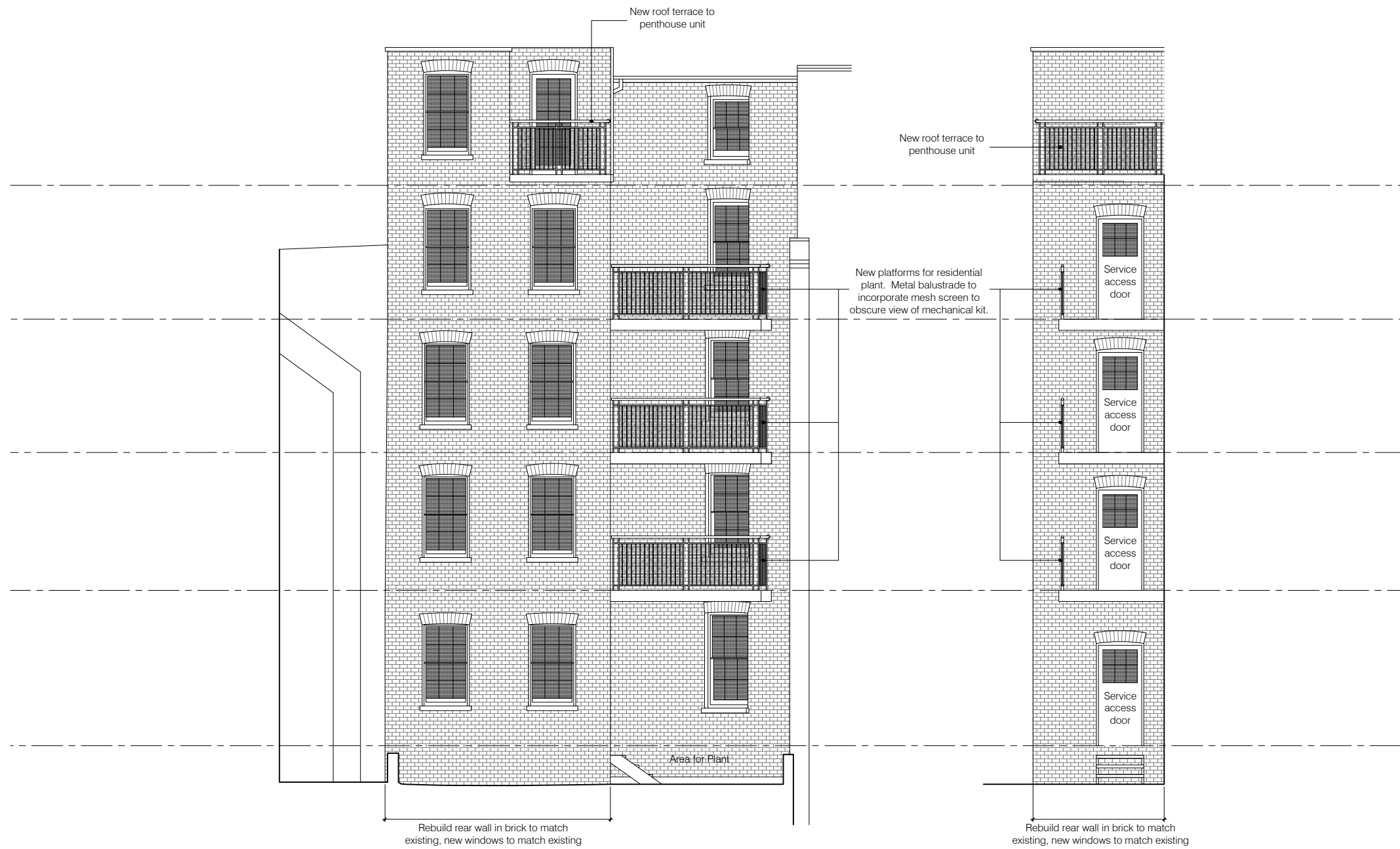
2011 09 22	ISSUED FOR PLANNING	JF	SR	
2011 09 16	Draft Planning Issue	JF	SR	
rev	date	description	drawn	checked
dwg no.		job no.	11024	
140		7 Upper St Martin's Lane		
		Proposed Section A-A		
		1:50 @ A1 1:100@A3		



A	2011 09 22	ISSUED FOR PLANNING	JF	SR
	2011 09 16	Draft Planning Issue	JF	SR
rev	date	description	drawn	checked
dwg no.		job no. 11024		
141 A		7 Upper St Martin's Lane		
		Proposed Section B-B		
		1:50 @ A1 1:100@A3		

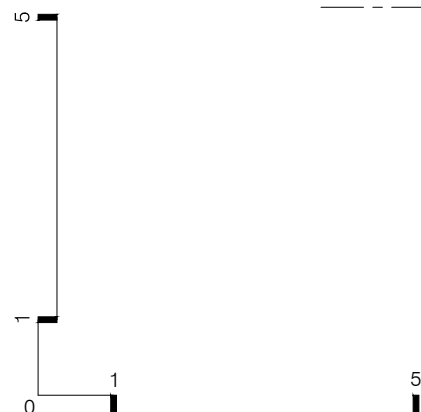


A	2011 09 22	ISSUED FOR PLANNING	JF	SR
	2011 09 19	Draft Planning Issue	JF	SR
rev	date	description	drawn	checked
dwg no.		job no.	11024	
170 A			7 Upper St Martin's Lane	
			Proposed elevations: street elevations	
			1:50 @ A1 1:100@A3	

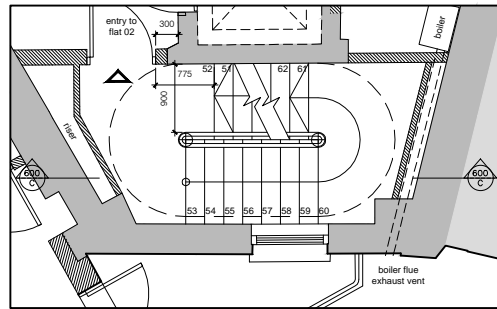


elevation 3

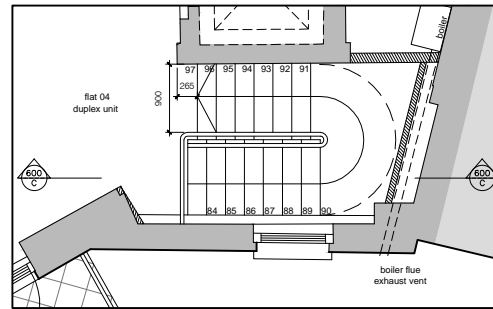
elevation 4



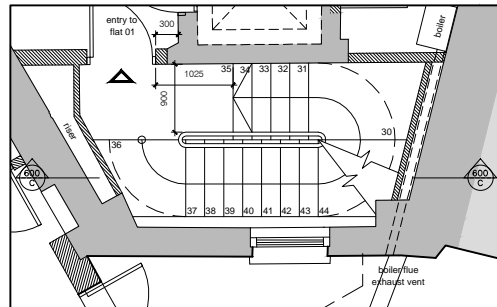
2011 09 22 ISSUED FOR PLANNING			JF	SR
2011 09 16 Draft Planning Issue			JF	SR
rev	date	description	drawn	checked
171				
job no. 11024				
7 Upper St Martin's Lane				
Proposed elevations: lightwell elevations				
1:50 @ A1 1:100@A3				



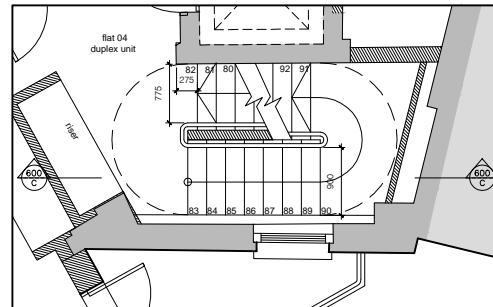
stair plan at second floor



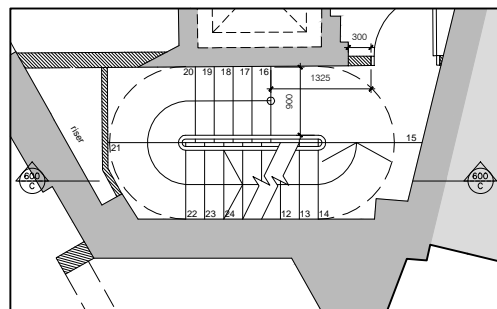
stair plan at fifth floor



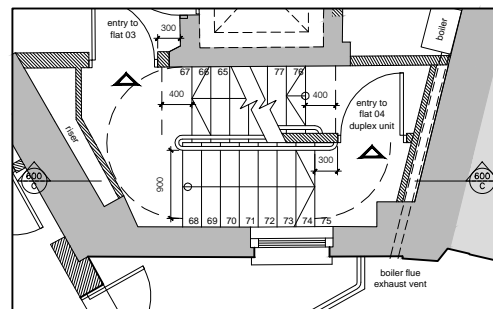
stair plan at first floor



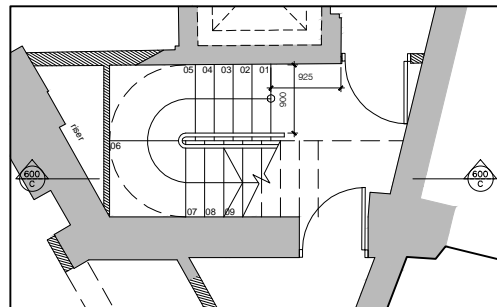
stair plan at fourth floor



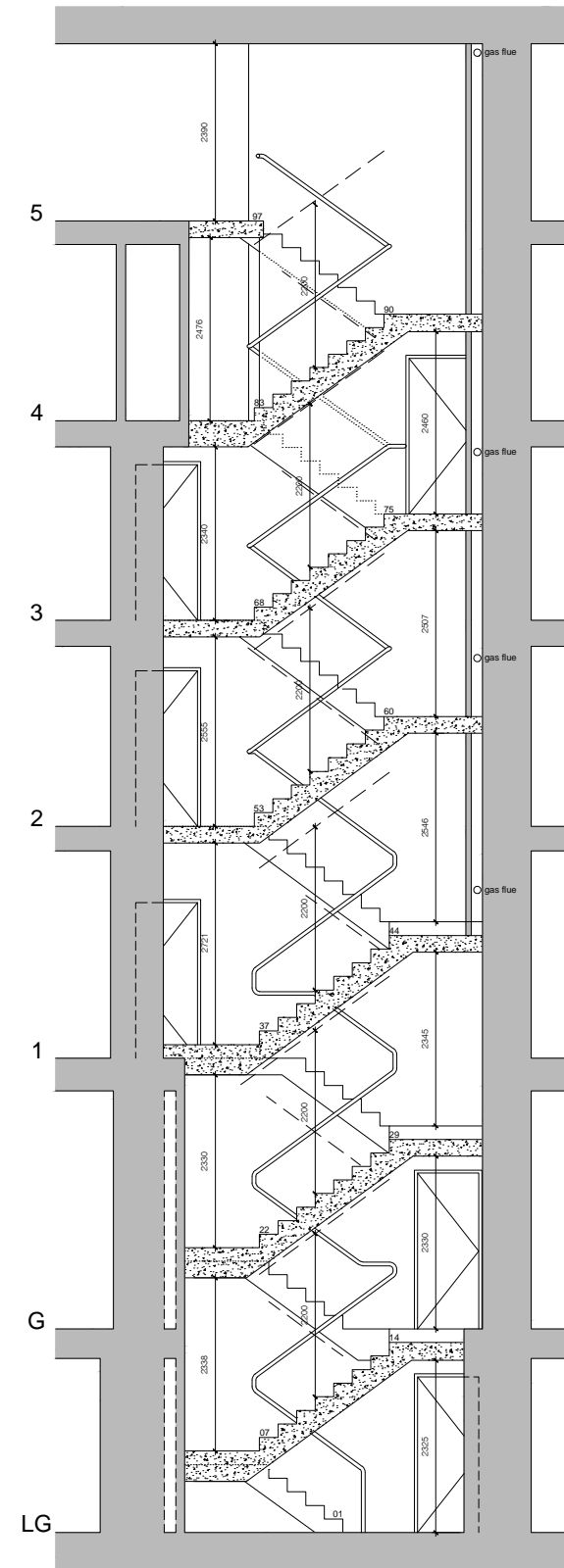
stair plan at ground floor



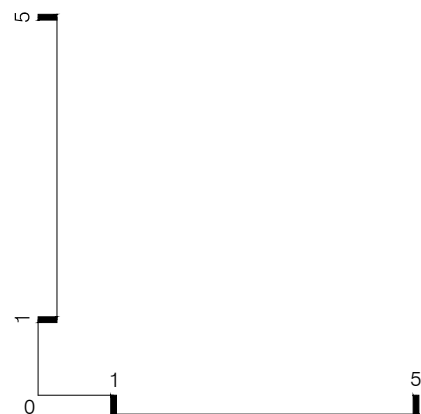
stair plan at third floor



stair plan at lower ground floor



section C through stair



approx north



	2011 09 22	ISSUED FOR PLANNING	JF	SR
A	2011 09 20	Gas flues added.	JF	SR
	2011 09 02	Sketch Proposal	JF	SR
rev	date	description	drawn	checked
dwg no.		job no.	11024	
			7 Upper St Martin's Lane	
			Proposed new stair	
			1:50 @ A1 1:100@A3	