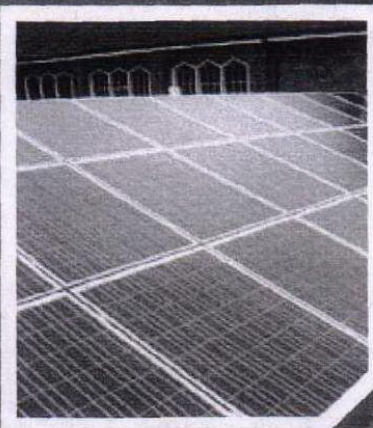
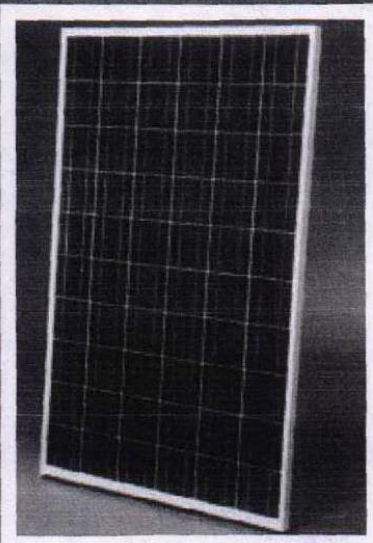




# Romag

SOLAR

## Romag SMT 6(60)P PV Modules



### Romag SMT 6 Series Modules

Romag are a UK glass processor and solar PV manufacturer. The SMT 6 Series modules are made in the UK, which improves both availability and service in the UK market. Romag also process glass used in our PV modules at the same location as our PV line which further improves logistics and quality control. These features also combine to achieve the lowest possible embedded CO<sup>2</sup> content compared with many PV modules. (Most modules available in the UK are of Asian origin and are shipped to the UK or use glass imported from Europe and beyond consequently clocking up numerous 'carbon miles').

SMT 6 Series modules were the first PV modules to achieve the BSI Kite mark for MCS certification.

### Important Features

- Suitable for use in systems up to 1000V DC
- Maximum applied load to front surface, of 5400 Pa
- Maximum applied loading, front and back, of 2400 Pa
- Manufactured in our ISO 9001: 2008 certified factory
- Factory regularly audited by BSI, TUV SÜD and ICIM
- Repetitive cycling between -40deg C and +80deg C at 80% relative humidity
- Simulated impact of 25mm hail at terminal velocity
- 3000V DC frame/cell string isolation test
- Bypass diodes to counteract shading effects

### Maintenance

Romag SMT6 Series PV modules are passive with no moving parts to wear out and if installed at an angle of over 20° are self cleaning in most locations. We do however, recommend an inspection of the modules at least once a year and any dirt build up should be cleaned off.

MADE IN UK



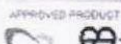
LOW CARBON FOOTPRINT

'IN HOUSE' GLASS PROCESSING (BETTER SERVICE AND QUALITY CONTROL)

MCS CERTIFIED

BLACK FRAMES, SILVER FRAMES OR UNFRAMED VARIANTS

AVAILABLE AS 'PV KITS'



INFO 001 - PANELS





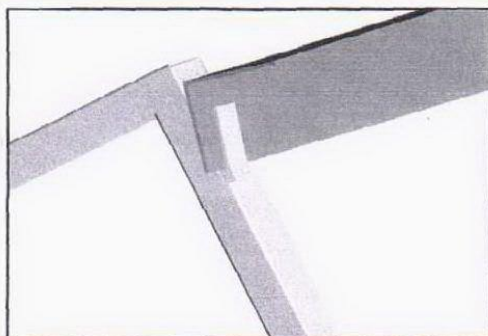
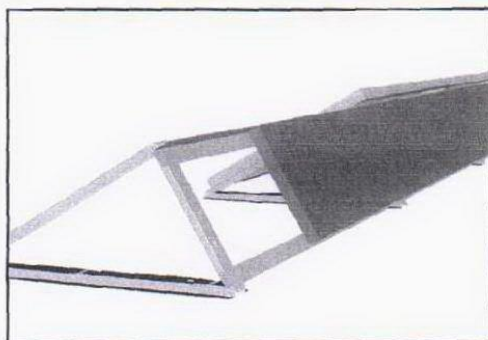
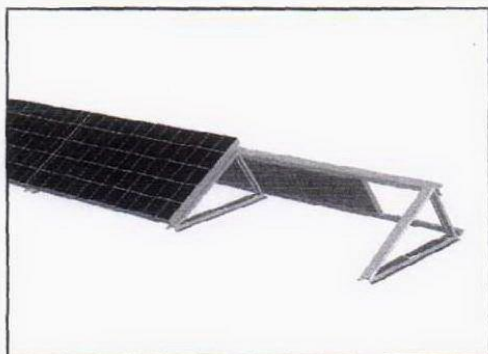
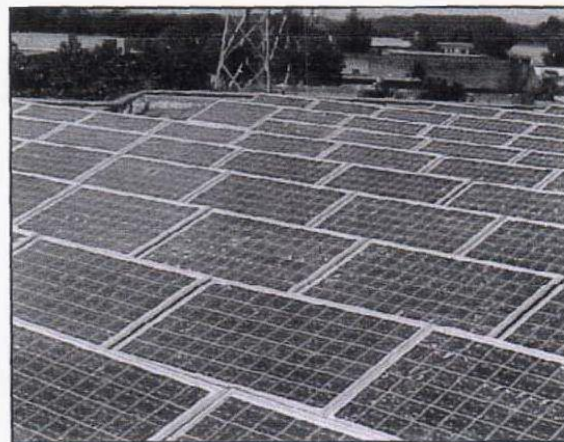
Patent pending



## The FlatFix Mounting Structure for PV Systems

The FlatFix Solar support for flat roof solar systems is carefully designed to make installation easy. FlatFix is a product for flat or slightly tilted roofs and areas. FlatFix can either be secured using screws or by ballasting. To secure a rooftop array with ballast, standard aluminium profiles can be clicked into the specially formed recess. The ballasted array can withstand high wind loads with tilt up to  $30^\circ$  and be as secure as one held down by screws. Through its unique design and way of ballasting FlatFix can do with as less as 23kg ballast per  $m^2$ .

Each FlatFix frame is manufactured from aluminium and stainless steel components, and will support the system as long as the solar modules last. The simple and well thought through FlatFix support system can be used for a wide range of different solar modules without any kind of adjustments to the stand.



### FlatFix benefits

- Fast and easy installation and handling
- Foldable and therefore small transport volume
- One type fits all solar panel sizes
- Can be secured through screws or ballast
- Low ballast trough unique design
- Non roof-penetrating
- Standard  $30^\circ$  angle for optimal yield of the system
- Manufactured from aluminium and stainless steel
- Roof protection through EPDM rubber
- 20 years product warranty

Material	Aluminium
Tilt angle	$30^\circ$ (other angles optional)
A	750mm
Weight	1,4kg
Package	870x130x30mm (250 pieces on one pallet)

