

RECEIVED
26 SEP 2011

Listed Building Consent Discharge of Conditions

ENG-REP-TWC-WRB-CBSA-00067

Western Range Building LB31 Whitworth Blue

Principal Contractor: Taylor Woodrow

King's Cross Package 6

Western Range Building

LB31 Whitworth Blue

					Acceptance on behalf of Network		
Rev	Prepared by	Date	Approved by Garry Tyrell	Date	Required Y	Accepted by	Date
00	Katherine Watts	21/09/11	<i>G Tyrell</i>	21/09/11	Y	<i>[Signature]</i>	21.09.11

Comments and observations

This document has been prepared for the partial discharge of condition 31 of Listed Building Consent 2006/3394/L.

2.0 Introduction

This document has been prepared for the partial discharge of condition 31 of the Listed Building Consent 2006/3394/L as follows:

Prior to commencement of any relevant works, a detailed Materials Specification describing and illustrating the materials, surface treatments, fixtures and finishes of all elements internal and external to the western concourse, main train shed, suburban shed, southern train shed façade and canopies and platform overbridge must be submitted to and approved by the local planning authority. To be approved by the local planning authority, the specification must identify details for all elevation, flooring, platform surfacing, roofing and ceiling elements within those elements.

3.0 Description of the Material

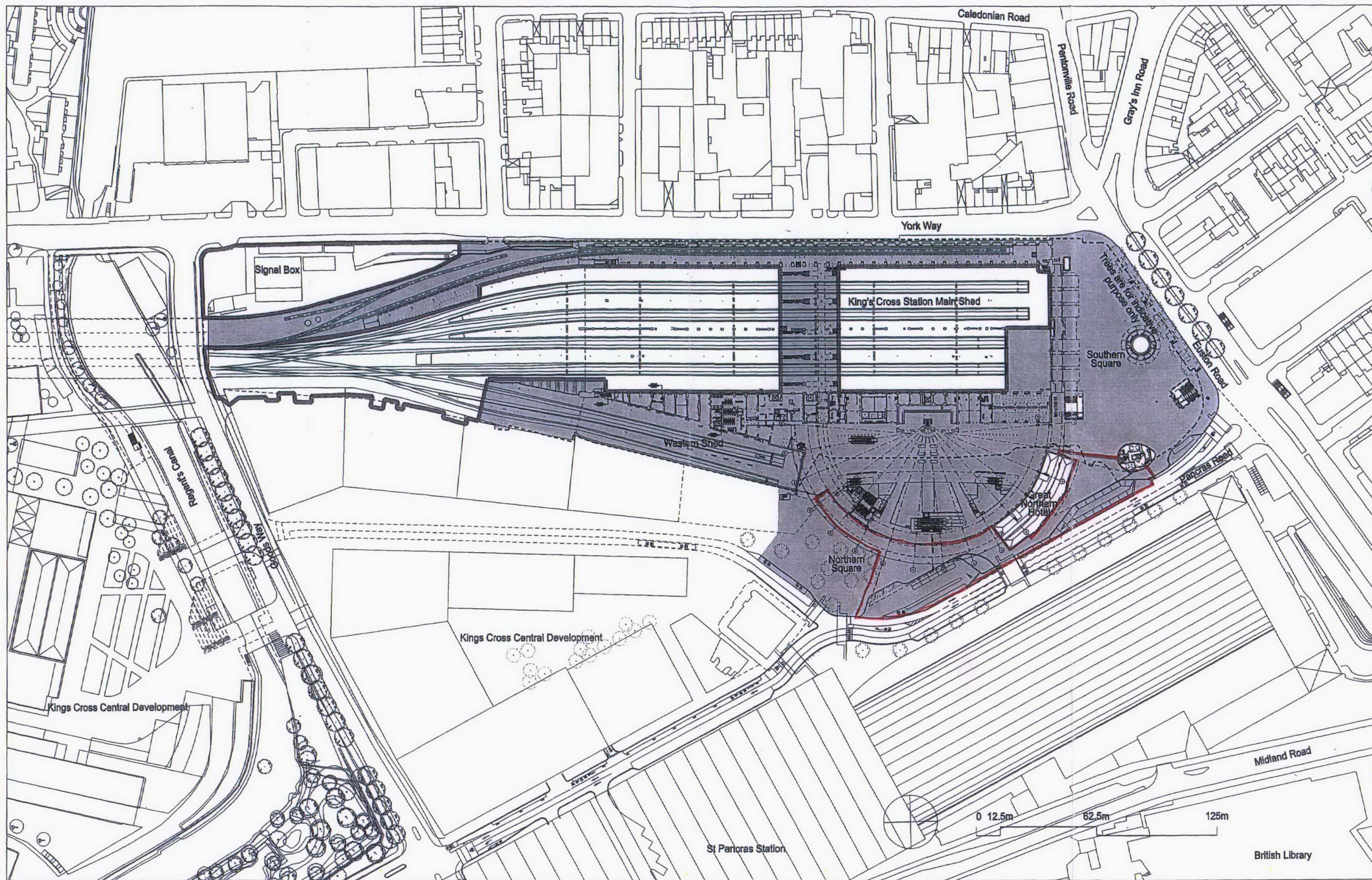
Whitworth Blue is a sandstone from Whitworth quarry near Rochdale in Lancashire, an area well known for supplying stone for the pavements of London. It is an even grey with a swirl pattern and has been used in a number of prestigious locations in London, including Somerset House (See Appendix B). This stone has also been used by Argent in the area adjacent, so the Northern Square will be surfaced in a consistent material across its width.

The test results for the frost resistance of the stone is out-of-date so new tests are being carried out on the stone in order that it complies with the current British Standard. For programme reasons, the stone is to be laid before the results are completed but the supplier has undertaken to replace the stone if it does not pass the test.

4.0 Appendices

4.1 Appendix A – Site Plan

1163/AL-S01 rev 01



Do not scale from this drawing.
All dimensions are to be checked on site and any discrepancies noted in writing to JMP.
All dimensions are in millimetres unless noted otherwise.
If in doubt ask the Contract Administrator.

Revisions		Drawn	Checked
Rev.	Date		
01	14.07.2006	JMP	NR
02	11.12.2006	JMP	NR
Issued for Planning / Listed Building Application Reissued for Planning / Listed Building Application Entrance/Exit Canopy revised, Southern Square revised, Block A1 revised, Taxi Canopies omitted, Block A1 Building Line revised, Area of Planning Boundary revised, Road layout based on revision H.			

PLANNING APPLICATION - SITE AREA

STATION ENHANCEMENT	30,595 sq.m
PLATFORM Y	6,810 sq.m
TOTAL	37,405 sq.m

----- NETWORK RAIL
FREEHOLD BOUNDARY

King's Cross Station Enhancement PA Application Site Plan

scale	1:1250 at A2	job no.	1163
date	12.07.2006	drawn by	KM
drawing status	Planning / Listed Building Application	checked by	NR
drawing no.	AL-S01	revision	02

John McAslan + Partners

49 Princes Place
London W11 4QA
Telephone: 020 7727 2863
Facsimile: 020 7221 8835
mailto:mailbox@mcaslan.co.uk
www.mcaslan.co.uk

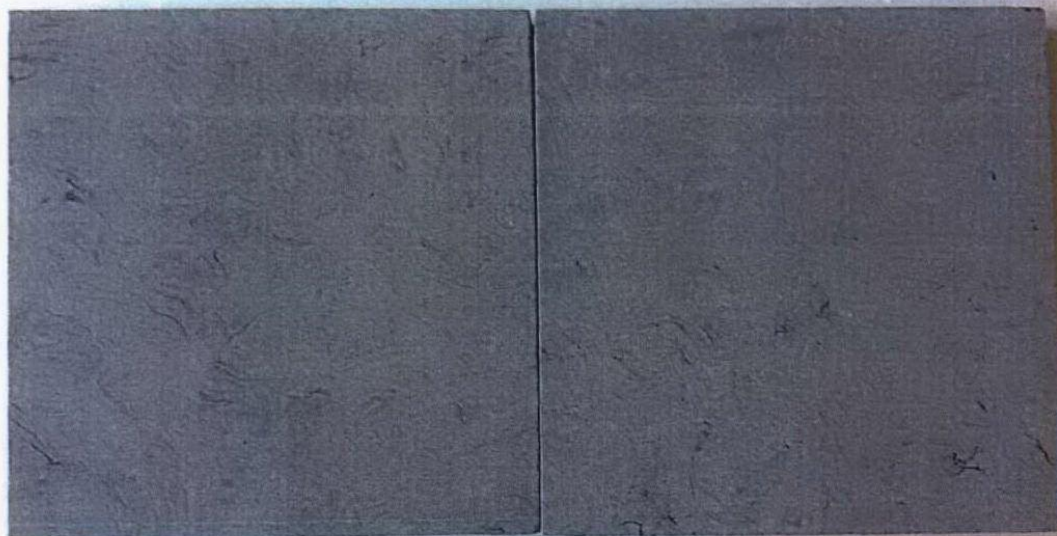
4.2 Appendix B – Description and Extent of Whitworth Blue

Photograph of Whitworth Blue

Two pages from the supplier's brochure

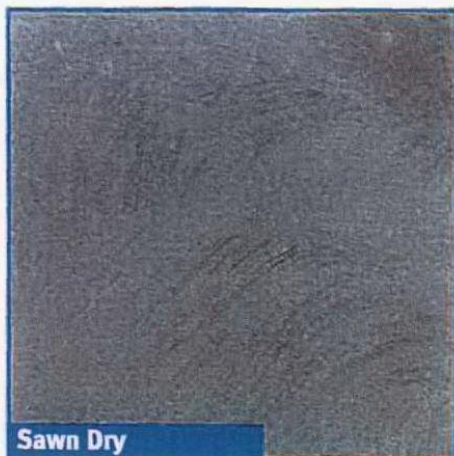
PR1-CHP-7600 Rev 06 Highways Surface Construction sheet 1 of 2 – Yellow = extent of the stone

PR1-CHP-7601 Rev 06 Highways Surface Construction sheet 2 of 2 – Yellow = extent of the stone

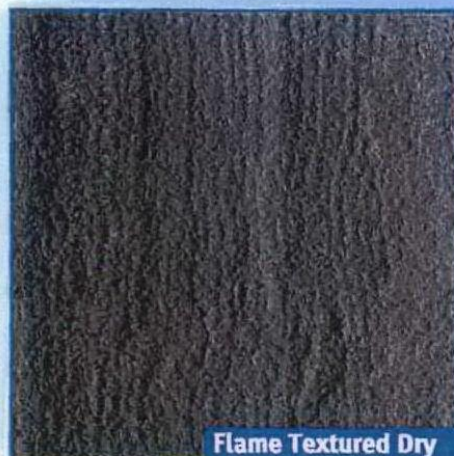


Photograph of Whitworth Blue samples

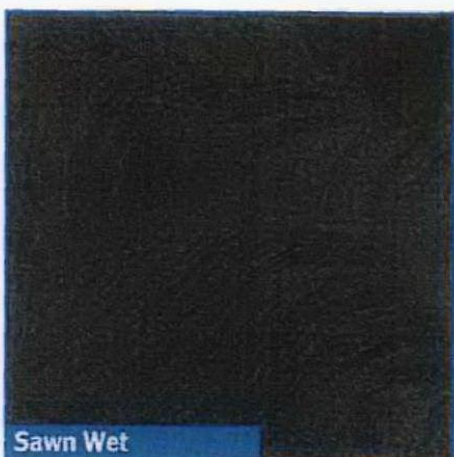
Whitworth Blue Sandstone



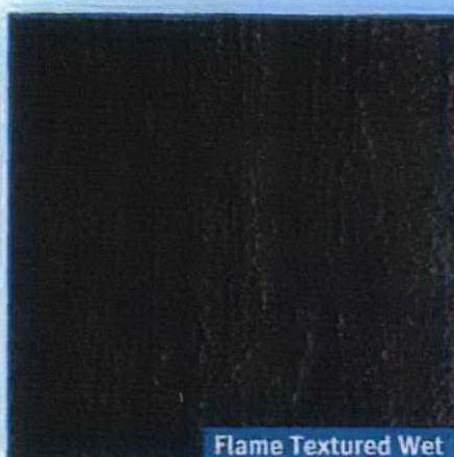
Sawn Dry



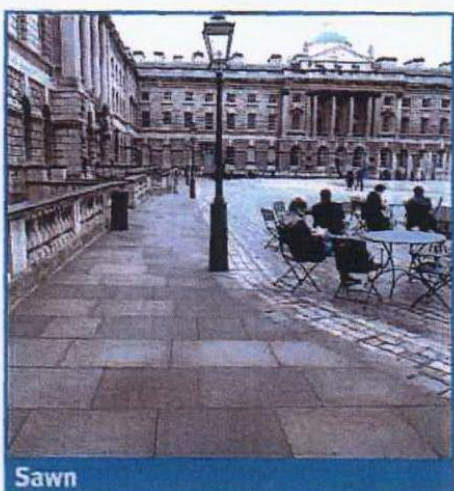
Flame Textured Dry



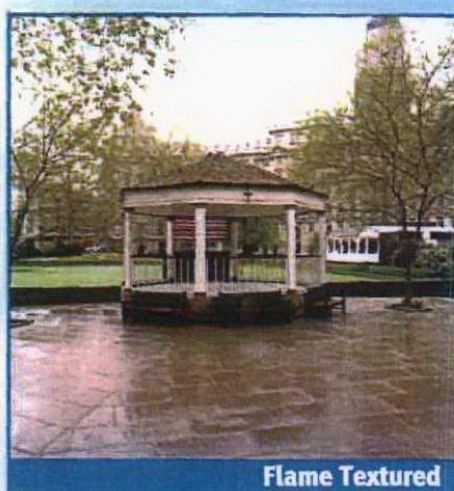
Sawn Wet



Flame Textured Wet



Sawn



Flame Textured

Technical Information

Description	Fine grained Sandstone, carries clean, Sharp arris. Very Durable with good weathering properties.	Density	2550 Kg/m ³
Colour	Blue/Grey with inclusions of Brown/Buf	Compressive Strength	123 N/mm ²
Quarry	Whitworth Quarry	Water Absorption	1.9%
	Rochdale	Flexural Strength	15.36
	Lancashire	Abrasion Resistance	21.7
		Slip Resistance	70
		Polished Paver Value (PPV)	60

Whitworth Blue Sandstone Contracts to view

Somerset House, London
Finsbury Circus, London
Temple Quays, Bristol
Princes Street, Edinburgh
Market Square, Ludlow
Thames Court Bridge, London
Langstone High Street, Hants
Dock Street, Belfast
City of Westminster, London
Piccadilly Gardens, Manchester
Old Hall Street, Liverpool
Winchester House, London
The Bailgate, Lincoln
Dundee Esplanade, Scotland
Berwick Hills, Middlesbrough
Tower Place, London
Kings Cross / St. Pancras, London

Diamond Sawn Paving
Flame Textured Paving
Diamond Sawn Paving
Diamond Sawn Paving
Flame Textured Paving
Diamond Sawn Paving
Flame Textured Paving
Diamond Sawn Paving
Diamond Sawn Paving
Diamond Sawn Setts
Diamond Sawn Paving
Diamond Sawn Paving
Diamond Sawn Paving
Diamond Sawn Paving
Diamond Sawn Paving
Diamond Sawn Paving
Diamond Sawn Paving

Product Range and Sizes

Diamond Sawn Paving

300mm x 50 x Random Length
450mm x 50 x Random Length
600mm x 50 x Random Length

300mm x 75 x Random Length
450mm x 75 x Random Length
600mm x 75 x Random Length

Diamond Sawn Setts

200mm x 50mm x 100mm
100mm x 50mm x 100mm

200mm x 75mm x 100mm
100mm x 75mm x 100mm

Diamond Sawn Setts are also available in a Tumbled finish, which gives the appearance of a weathered material immediately after laying

All Materials have been tested to BS EN 1341:2000

This product is also available with a flame textured finish to the top surface.

Other sizes are available on request.