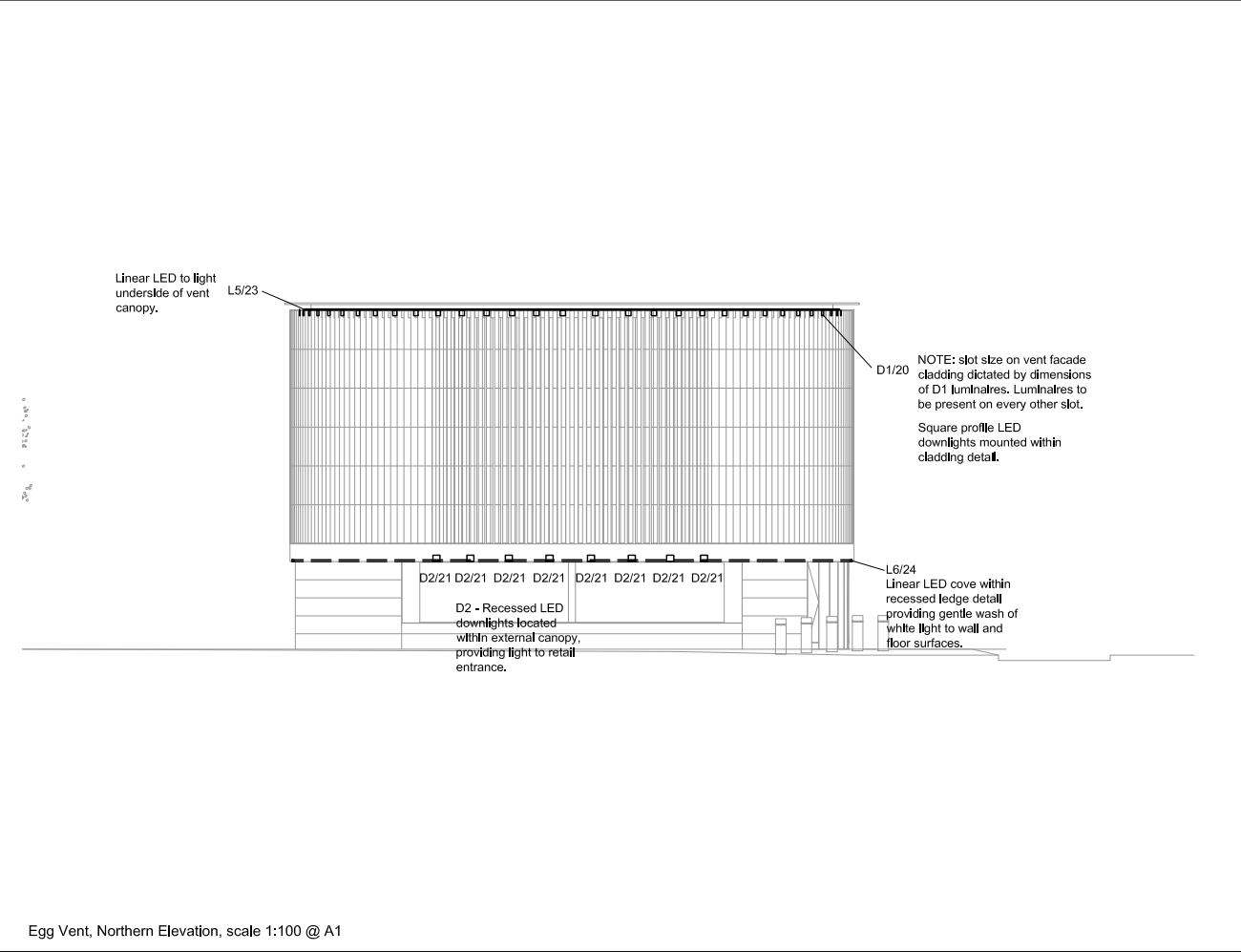
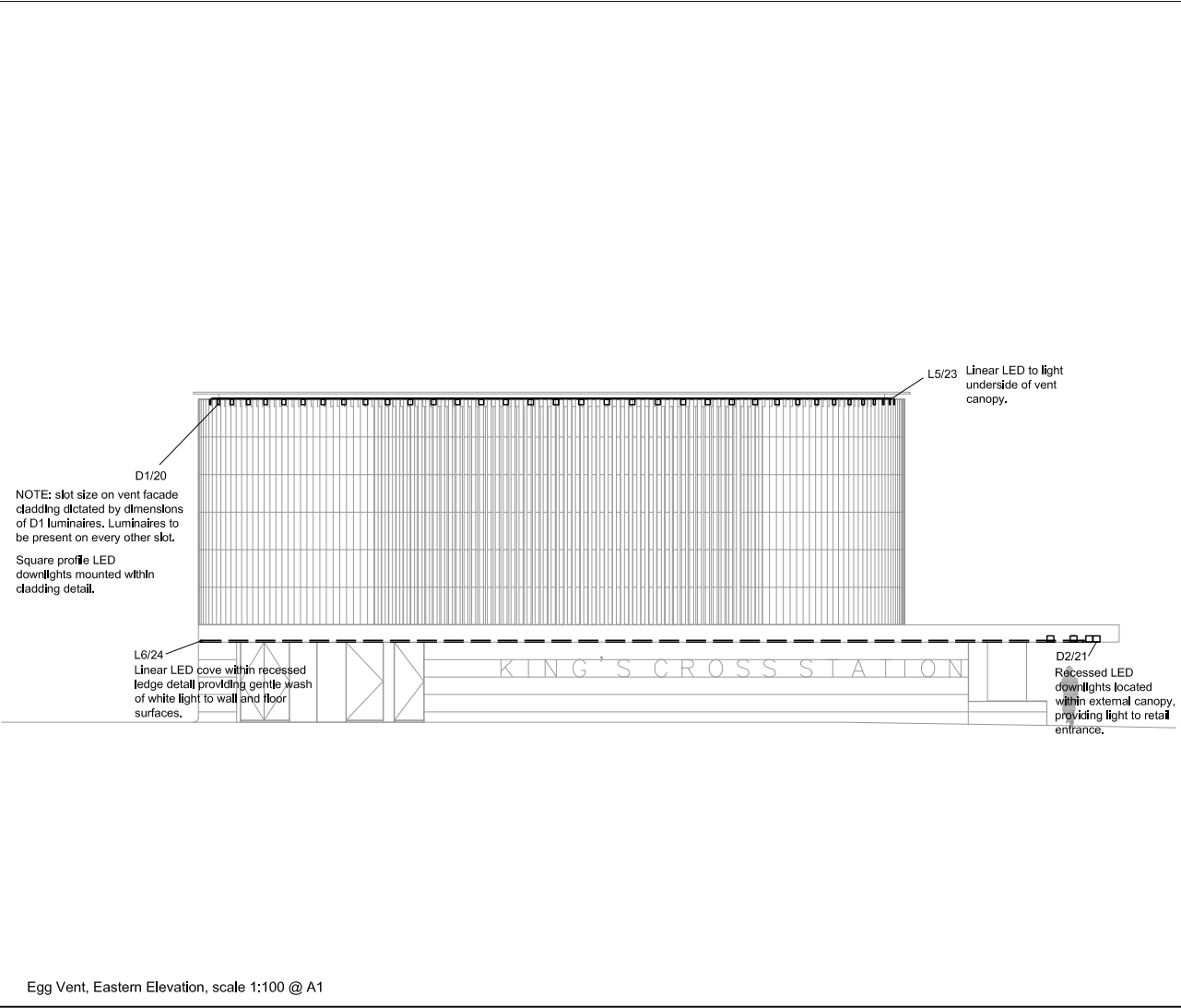


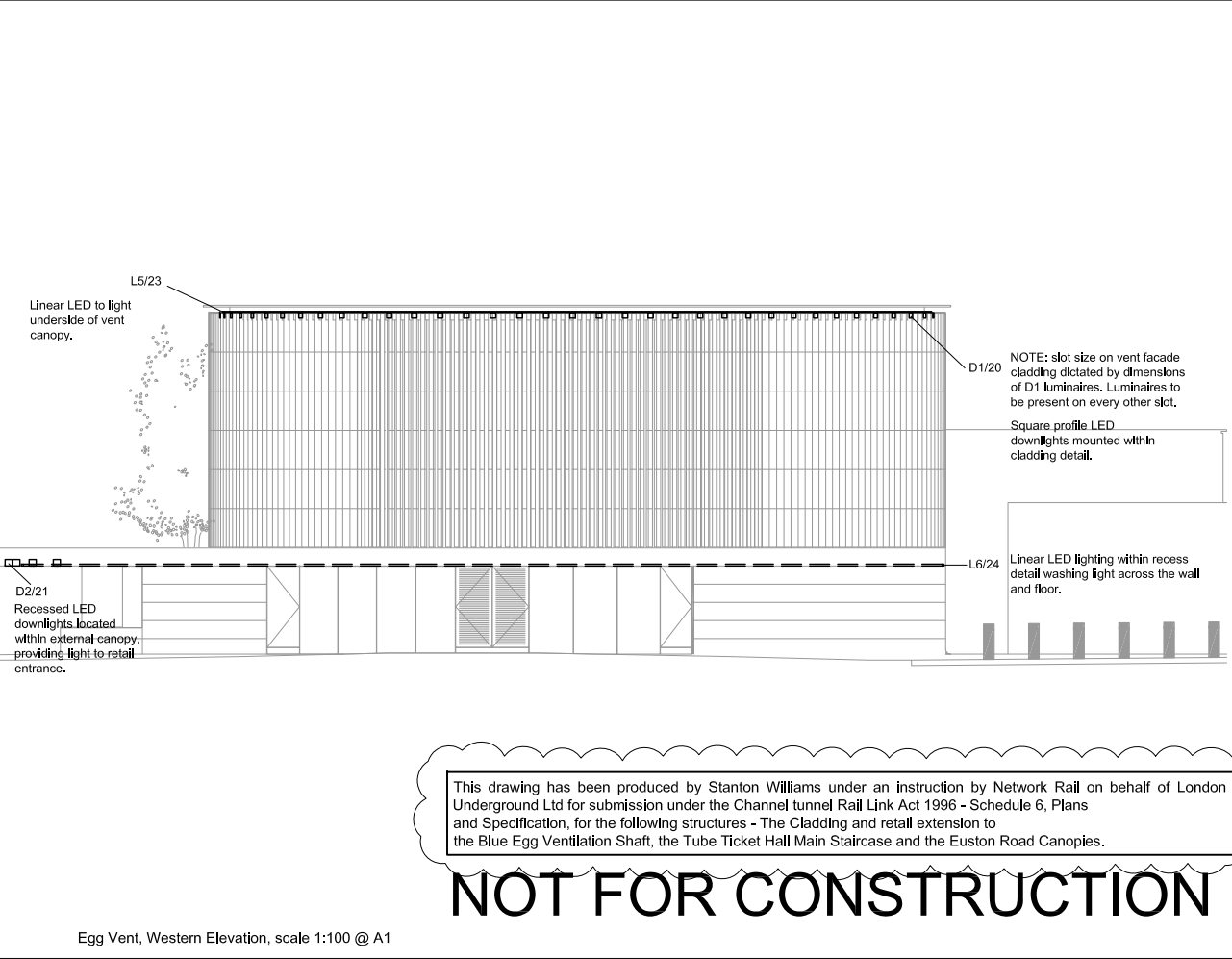
Egg Vent, Southern Elevation, scale 1:100 @ A1



Egg Vent, Northern Elevation, scale 1:100 @ A1



Egg Vent, Eastern Elevation, scale 1:100 @ A1



Egg Vent, Western Elevation, scale 1:100 @ A1

- LUMINAIRE KEY
- B1 - IP65 25W P/M LINEAR LED LUMINAIRE, TO BE INTEGRATED INTO BENCH.
  - C1 - 18M HIGH FEATURE LIGHTING COLUMN WITH MULTIPLE HEAD LED PROJECTORS. ESTIMATED WATTAGE PER 1.2KW
  - C2 - 6M HIGH LED LIGHTING COLUMNS WITH MULTIPLE HEAD LED PROJECTORS. ESTIMATED WATTAGE 300W.
  - D1 - IP65 10W SURFACE MOUNTED LED PROJECTOR.
  - D2 - IP65 22W RECESSED LED DOWNLIGHT.
  - D3 - IP65 30W LED DOWNLIGHT
  - L1 - IP54 50W LINEAR LED LUMINAIRE.
  - L2 - IP65 40W LINEAR LED LUMINAIRE.
  - L3 - IP54 15W P/M LINEAR LED LUMINAIRE.
  - L4 - IP65 36W P/M LINEAR LED LUMINAIRE.
  - L5 - IP65 25W P/M LINEAR LED MODULES COMPLETE WITH WIDE BEAM DISTRIBUTION.
  - L6 - IP65 30W P/M LINEAR LED LUMINAIRE.
  - L7 - IP65 40W SURFACE MOUNTED LINEAR LED LUMINAIRE.
  - L8 - IP65 36W SURFACE MOUNTED LINEAR LED LUMINAIRE.
  - L8A - IP65 12W SURFACE MOUNTED LINEAR LED LUMINAIRE.
  - L10 - IP65 70W LINEAR LED LUMINAIRE.
  - L11 - IP65 36W LINEAR LED LUMINAIRE.
  - P2 - IP65 30W LED PROJECTORS.
  - T1 - IP65 30W IN-GROUND LED UPLIGHTER.
  - U1 - IP68 36W IN - GROUND, LINEAR, ADJUSTABLE LED UPLIGHTER.
  - U2 - IP68 24W IN - GROUND, LINEAR, ADJUSTABLE LED UPLIGHTER.
  - U3 - IP68 12W IN - GROUND, LINEAR, ADJUSTABLE LED UPLIGHTER.

|    |          |    |    |    |
|----|----------|----|----|----|
| 02 | 20-09-11 | BH | TD | TD |
| 01 | 29-07-11 | BH | CS | CS |

| Issue | Date | By | Chkd | Appd |
|-------|------|----|------|------|
|-------|------|----|------|------|

Client:  
**Cubitt House**  
1 Battle Bridge Road  
London N1C 4AH  
Phone +44 (0)20 7147 6011  
Email: [KingsCrossRedevelopmentProjectDocumentControl@networkrail.co.uk](mailto:KingsCrossRedevelopmentProjectDocumentControl@networkrail.co.uk)



Stanton Williams  
36 Graham Street  
London N1 8GJ  
Phone +44 (0)20 7880 6400  
Email: [info@stantonwilliams.com](mailto:info@stantonwilliams.com)  
[www.stantonwilliams.com](http://www.stantonwilliams.com)

STANTON  
WILLIAMS

studio FRACTAL  
Suite 113, The Beehive, City Place,  
Gatwick, East Sussex, RH6 0PA,  
Tel: 01293 804792, Email: [info@studiofractal.co.uk](mailto:info@studiofractal.co.uk)

Job Title  
**King's Cross Station  
Redevelopment Programme  
Package 7**

Drawing Title  
**Kings Cross Square  
Blue Egg Ventilation Shaft  
Lighting Elevation**

Scale at A1  
1: 50

Document Reference No  
ENG-DWG-SWA-SSQ-SFR-3011-05-007

Drawing Status  
Planning/Grip4

SF Job No Drawing No  
3011 05-007

Rev.

02

This drawing has been produced by Stanton Williams under an instruction by Network Rail on behalf of London Underground Ltd for submission under the Channel Tunnel Rail Link Act 1996 - Schedule 6, Plans and Specification, for the following structures - The Cladding and retail extension to the Blue Egg Ventilation Shaft, the Tube Ticket Hall Main Staircase and the Euston Road Canopies.

NOT FOR CONSTRUCTION