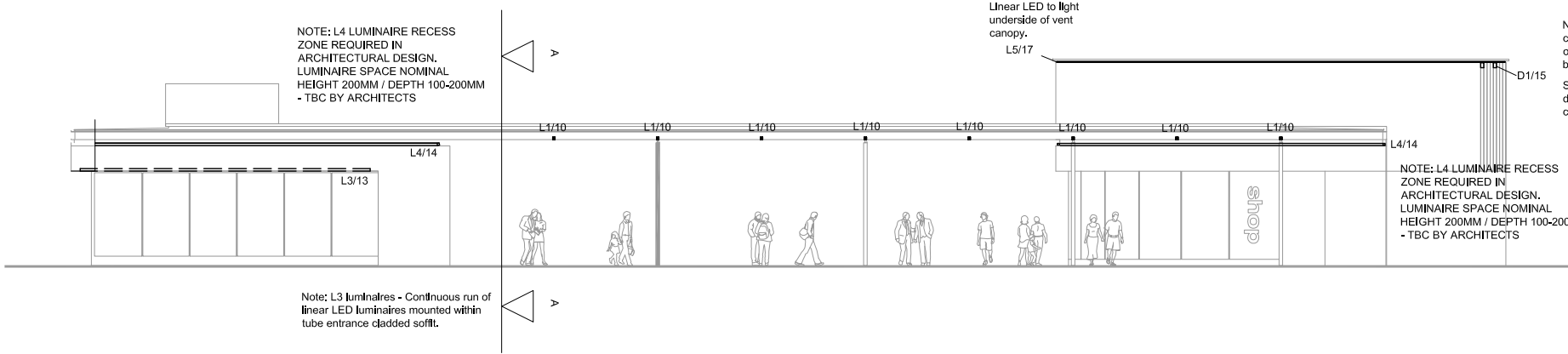
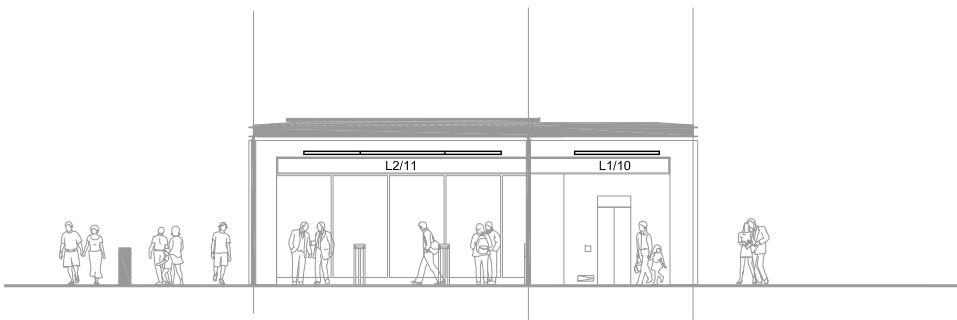


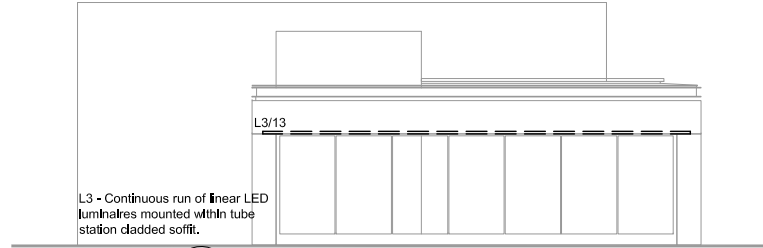
Canopy and Rotunda, Northern Elevation. Scale 1:100 @ A1



Canopy and Rotunda, Southern Elevation. Scale 1:100 @ A1



Canopy and Rotunda, Section A-A. Scale 1:100 @ A1



Canopy and Rotunda, Western Elevation. Scale 1:100 @ A1

This drawing has been produced by Stanton Williams under an instruction by Network Rail on behalf of London Underground Ltd for submission under the Channel tunnel Rail Link Act 1996 - Schedule 6, Plans and Specification, for the following structures - The Cladding and retail extension to the Blue Egg Ventilation Shaft, the Tube Ticket Hall Main Staircase and the Euston Road Canopies.

NOT FOR CONSTRUCTION

- LUMINAIRE KEY
- B1 - IP65 25W P/M LINEAR LED LUMINAIRE, TO BE INTEGRATED INTO BENCH.
 - C1 - 18M HIGH FEATURE LIGHTING COLUMN WITH MULTIPLE HEAD LED PROJECTORS. ESTIMATED WATTAGE PER 1.2KW
 - C2 - 6M HIGH LED LIGHTING COLUMNS WITH MULTIPLE HEAD LED PROJECTORS. ESTIMATED WATTAGE 300W.
 - D1 - IP65 10W SURFACE MOUNTED LED PROJECTOR.
 - D2 - IP65 22W RECESSED LED DOWNLIGHT.
 - D3 - IP65 30W LED DOWNLIGHT
 - L1 - IP54 50W LINEAR LED LUMINAIRE.
 - L2 - IP65 40W LINEAR LED LUMINAIRE.
 - L3 - IP54 15W P/M LINEAR LED LUMINAIRE.
 - L4 - IP65 36W P/M LINEAR LED LUMINAIRE.
 - L5 - IP65 25W P/M LINEAR LED MODULES COMPLETE WITH WIDE BEAM DISTRIBUTION.
 - L6 - IP65 30W P/M LINEAR LED LUMINAIRE.
 - L7 - IP65 40W SURFACE MOUNTED LINEAR LED LUMINAIRE.
 - L8 - IP65 36W SURFACE MOUNTED LINEAR LED LUMINAIRE.
 - L8A - IP65 12W SURFACE MOUNTED LINEAR LED LUMINAIRE.
 - L10 - IP65 70W LINEAR LED LUMINAIRE.
 - L11 - IP65 36W LINEAR LED LUMINAIRE.
 - P2 - IP65 30W LED PROJECTORS.
 - T1 - IP65 30W IN-GROUND LED UPLIGHTER.
 - U1 - IP68 36W IN - GROUND, LINEAR, ADJUSTABLE LED UPLIGHTER.
 - U2 - IP68 24W IN - GROUND, LINEAR, ADJUSTABLE LED UPLIGHTER.
 - U3 - IP68 12W IN - GROUND, LINEAR, ADJUSTABLE LED UPLIGHTER.

02	20-09-11	BH	TD	TD
01	29-07-11	BH	CS	CS

Issue	Date	By	Chkd	Appd
-------	------	----	------	------

Client:
Cubitt House
1 Battle Bridge Road
London N1C 4AH
Phone +44 (0)20 7147 6011
Email: KingsCrossRedevelopmentProjectDocumentControl@networkrail.co.uk



Stanton Williams
36 Graham Street
London N1 8GJ
Phone +44 (0)20 7880 6400
Email: 420@stantonwilliams.com
www.stantonwilliams.com

STANTON
WILLIAMS

studio | FRACTAL
Suite 113, The Beehive, City Place,
Gatwick, East Sussex, RH6 0PA,
Tel: 01293 804792, Email: info@studiofractal.co.uk

Job Title
**King's Cross Station
Redevelopment Programme
Package 7**

Drawing Title
Kings Cross Square
TTH Stair, Rotunda Linking Canopy and
Rotunda Lighting Elevations

Scale at A1
1: 50

Document Reference No
ENG-DWG-SWA-SSQ-SFR-3011-05-005

Drawing Status
Planning/Grip4

SF Job No
3011

Drawing No
05-005

Rev.
02