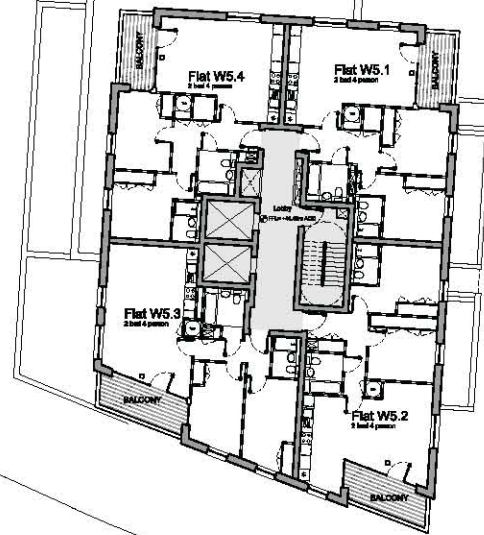


INTERNAL LAYOUTS ARE ONLY INDICATIVE

SCHOOL SCALE AND LAYOUT IS  
INDICATIVE ONLY  
FOR MORE INFORMATION ON  
OUTLINE PARAMETERS PLEASE  
REFER TO DRAWING 4401



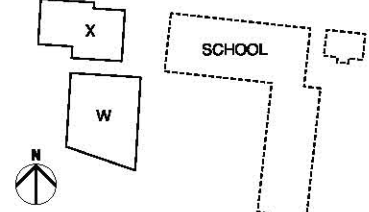
B	18/08/2011	Revisions from Client Review
A	17/08/2011	Revisions from Access and M&E comments
-	26/06/2011	Detailed Residential Layouts for comment and co-ordination

REV DATE

NOTE

1. Do not scale from this drawing, other than for Planning purposes.
2. All dimensions to be checked on site by the contractor and such dimensions to be his responsibility.
3. Report all drawing errors, omissions and discrepancies to the architect.
4. This document may be issued in an uncontrolled CAD format to enable others to use it as background information to make alterations and/or additions. In that instance the file will be accompanied by a PDF version. It is for those making such alterations and additions to ensure that they make use of current background information. AHMM Ltd accepts no liability for any such alterations or additions to the background information or arising out of changes to background information which occur prior to alterations or additions being made.

LOCATION



**ALLFORD HALL MONAGHAN MORRIS**

ARCHITECTS Ltd  
2ND FLOOR, BLOCK C, 5-23 OLD STREET LONDON EC1V 9HL  
TEL 020 7261 8281 FAX 020 7261 5123 WEB WWW.AHMM.CO.UK

Job title  
**HAWLEY WHARF**

drawing title / location  
**PROPOSED FIFTH FLOOR PLAN**

drawn by	checked	scale	status
MM	WL	1:200@A1; 1:400@A3	PLANNING

project	zone	source	CU/SB ref	drawing no.	revision
09175	S	-	P	B4005	B