

Ground Floor

Demolish kitchen walls and strip out fittings, waste and supply pipework

Remove power outlets, light fittings and redundant cabling

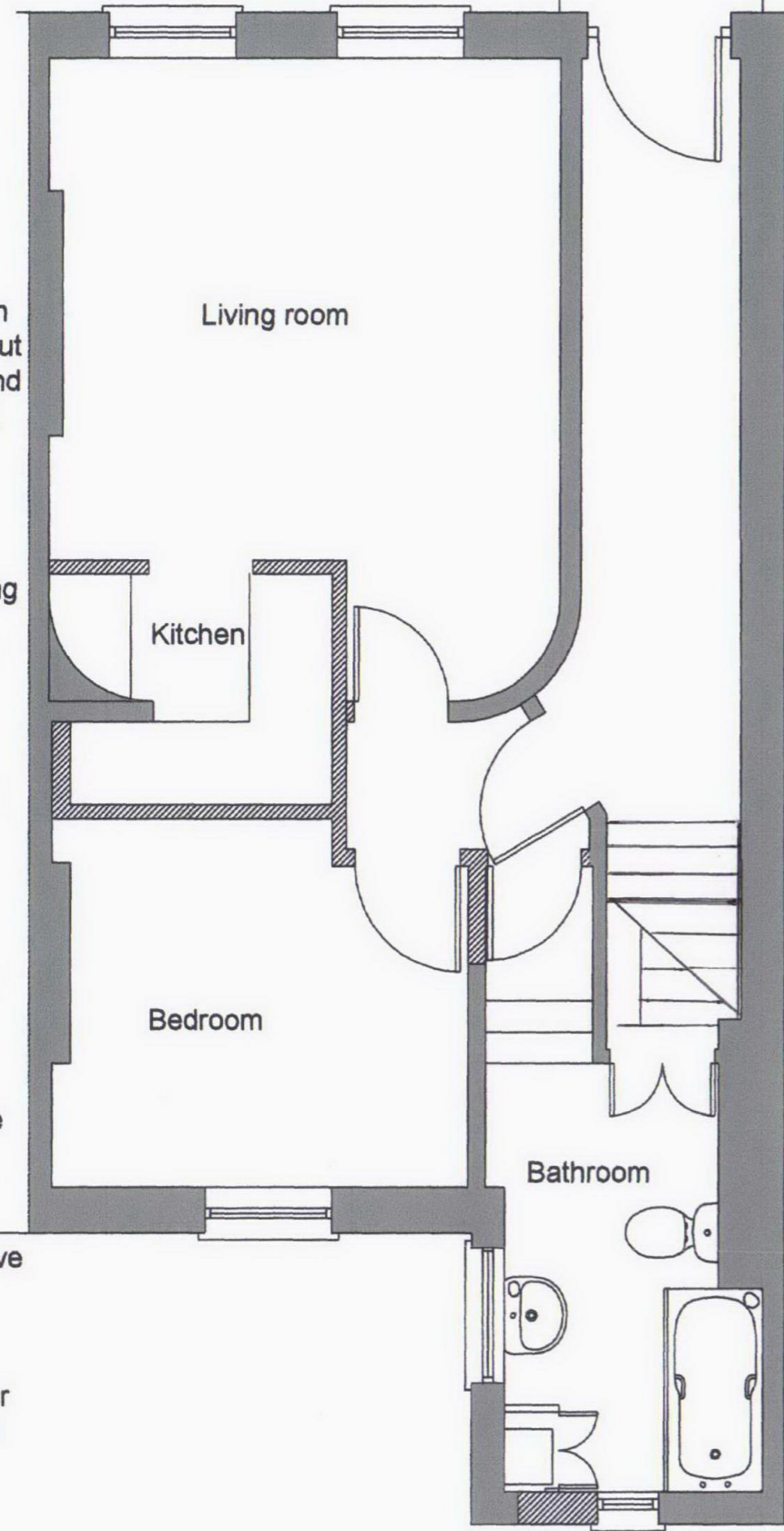
Take down four doors and partitions

Set aside doors for reuse

Remove bath & basin and set aside for reuse
Remove redundant waste pipes

Take down cupboard, remove and set aside boiler for reuse

Form opening for door in rear wall



Basement

Strip out kitchen fittings, waste and redundant supply pipework

Remove electrical sockets etc and cut back electrical wiring to make safe. Ensuring ring mains remain intact

Strip out cupboard

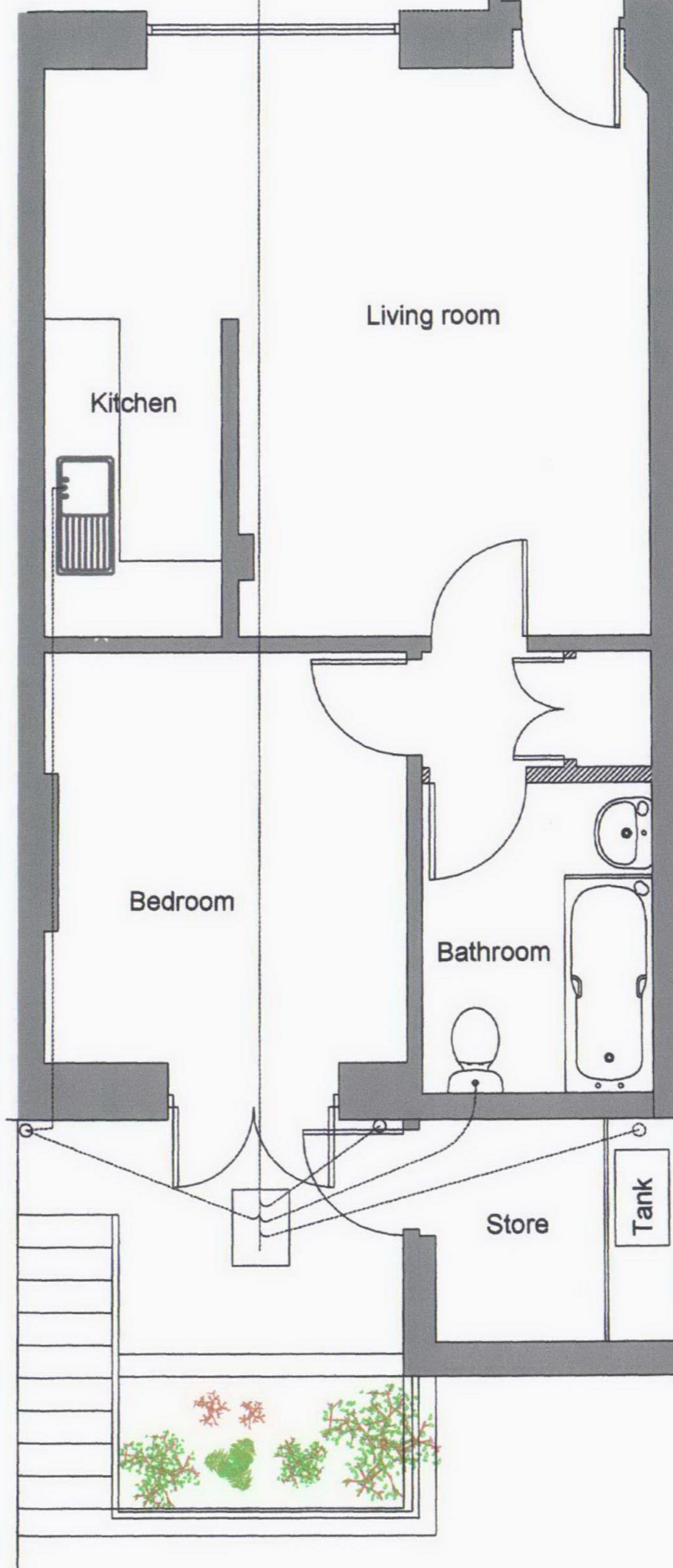
Remove basin & WC and set aside for re-use

Break out gulley and redundant drain

Remove water storage tank, stand and all redundant plumbing. Remove enclosure including cupboard doors and framing

Take off doors to garden and set aside for re-use

Break out yard gully



Remove soil and front wall of planting bed

Take down retaining wall and batter earth face

Remove handrail and balustrade to steps

NORTH LONDON PLANS
54 Graeme Road
Enfield Middlesex EN1 3UT
020 8967 7621 & 0786 663 6492

Scale 1:50 at A3
Date May 11
DWG no 225/162

Scale 1:50 at A3
Date May 11

103 Judd Street London WC1H 9NE
Extension and alterations
Existing floor plans