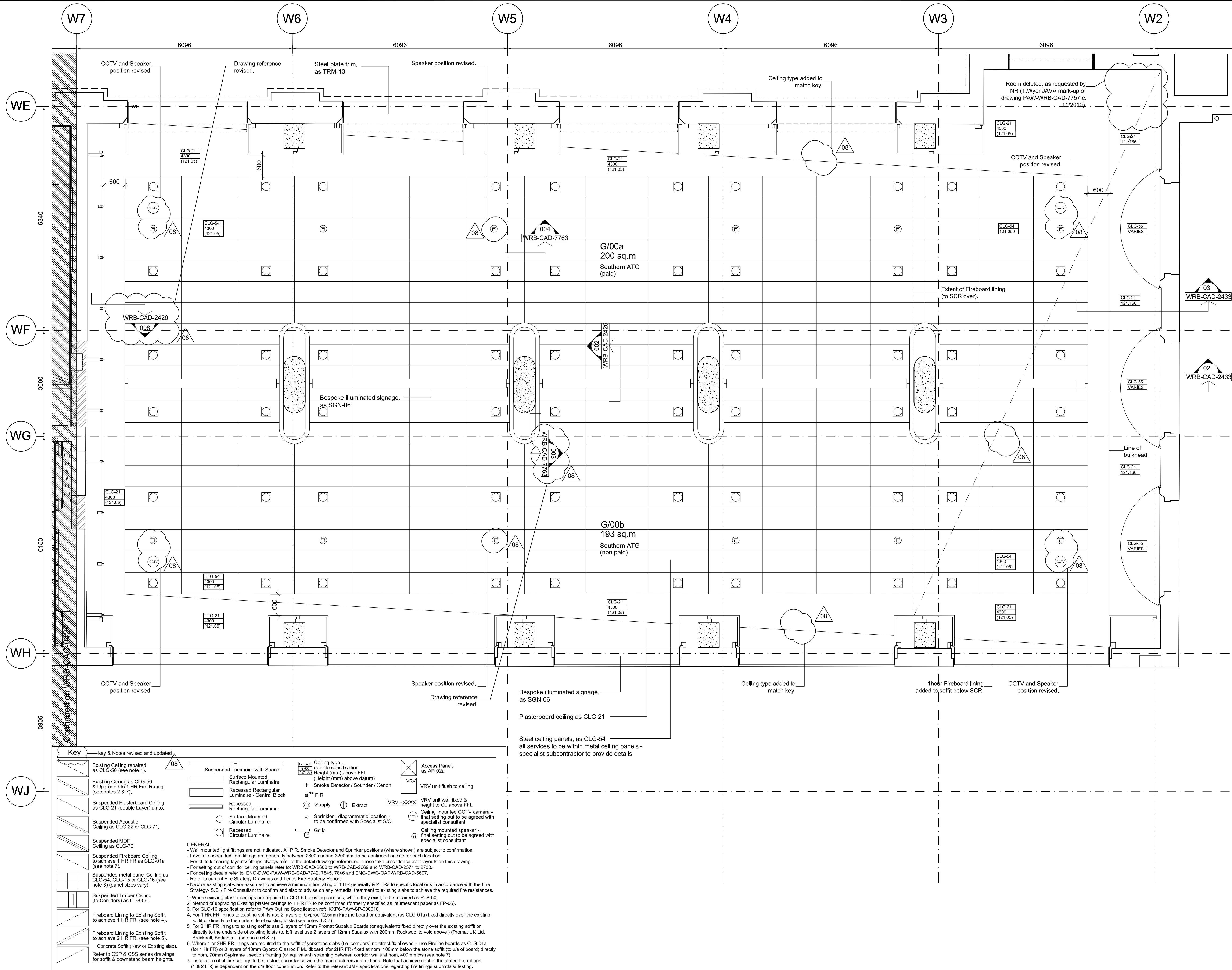


NOTE: THE PROPERTY OF THIS DRAWING AND DESIGN IS RESERVED. NO PART OF THIS DRAWING OR DESIGN IS TO BE COPIED OR REPRODUCED IN ANY MANNER WITHOUT THE WRITTEN CONSENT OF THE DESIGNER.



KEY PLAN

SAFETY HEALTH AND ENVIRONMENTAL INFORMATION BOX

Potential Risks

In addition to the hazard/risk normally associated with the types of work detailed on this drawing take note of the above. This drawing is to be read in conjunction with the relevant Design Risk Assessment and the Contractor's Risk Register. Reference should also be made to the Construction Phase Health and Safety Plan, prepared and maintained by the Principal Contractor. It is assumed that all works on this drawing will be carried out by a competent contractor working, where appropriate, to an appropriate method statement.

NOTES

- The general contractor is responsible for the verification of all dimensions on site and the architect is to be informed of any discrepancy. Do not scale from this drawing. Use figured dimensions only.
- The signed control copy of this drawing is held at the offices of Pascall+Watson Limited.
- All existing building dimensions and levels taken from survey information unless stated otherwise.

- This drawing has been updated to show revisions where un-coordinated information, inconsistencies, errors or omissions have been found between different GRIP 5 drawings issued by the GRIP 5 project design team. This drawing uses the same drawing numbering system for ease of identification with previously issued drawings, but has been produced by the GRIP 5 project team. As the drawing is wholly based on that issued by the GRIP 5 team, Pascall+Watson accepts no liability for the accuracy of the information that is shown un-changed.
- This drawing is based on ARUP/JMP 22/10/10 Issue Fire Strategy drawings.
- Where set-out dimensions were missing on the previous 03/07/10 issue JMP drawings these have been added, generally, by scaling directly from the original JMP CAD versions.
- All toilet ceilings have been updated & referenced to toilet detail drawings.

08	AM	03.12.10	IM	03.12.10	BB	03.12.10
REV	DRAWN BY	CHECKED BY	APPROVED BY	DATE		
	AM	RC	BB	01/10/2010		
SCALES	1:50		ISSUING OFFICE	PWA		
PROJECT NUMBER		3335				

CLIENT APPROVAL

A - APPROVED

B - APPROVED WITH COMMENTS

C - DO NOT USE - AMEND WITH COMMENTS AND RE-SUBMIT

STATUS

S4

PURPOSE OF ISSUE

FOR CONSTRUCTION APPROVAL

Taylor Woodrow Construction Ltd

TWC - Head Office

41, Clarendon Road

Watford

Hertfordshire

WD17 1TR

Tel: +44 (0)1923 478400

PROJECT

KING'S CROSS STATION

REDEVELOPMENT PROGRAMME

PACKAGE 6

TITLE

WESTERN RANGE BUILDING

GROUND FLOOR REFLECTED CEILING PLAN

SOUTHERN WING - SOUTH AREA

CLIENT

Network Rail

Architect

Pascall+Watson architects

5 Carlson Court, 116 Putney Bridge Road, London SW15 2NQ

Telephone: +44 (0)20 8874 2584

Facsimile: +44 (0)20 8874 2584

www.pascalls.co.uk

This drawing is issued on behalf of Pascall+Watson architects limited.

DRAWING NUMBER	REV
ENG-DWG-OAP-WRB-CAC-0428	08