

A1

1

2

3

4

5

6

7

8

9

10

11

A

B

C

D

E

F

G

H

I

J

K

L

M

N



Cut out in stove enamel face panel
to view EDNE display screen
Typical dimensions: 218mm(h) x 908(w)

EDNE beyond stove enamel face panel

5 8

CCTV shown indicatively.
(Bosch VDC 485)
Refer to Signage Schedule
ENG-SCH-JMP-PA-CBSA-002
for number of CCTV
integrated into signage box.

200
CCTV setout
typical offset dimension
from end of signage box

01 ELEVATION - SIGNAGE BOX FIXED TO TOTEM SCALE 1:2



Cut out in stainless steel plate below to accommodate CCTV
back box and enable the CCTV to be flush mounted where
required.

Refer to Drawings
PA-CAD-0040 to 61
for totem details

100 mm Ø

219 mm Ø

EDNE to sit behind cut out in stove enamel panel.
For set out of EDNE refer to drawing
ENG-DWG-JMP-PA-CAD-0099

03 PLAN - SIGNAGE BOX FIXING DETAIL TO TOTEM SCALE 1:2

Brushed Stainless steel plate
fabricated to form continuous
seamless surround

Gap to be consistent

Stove Enamel Face Panel,
Graphics Screen Printed
as SGN-03a

Signage panel hinges
for access where required.
Gas strut to hold panel in open
position.

EDNE incorporated where required
Refer to Signage Schedule
ENG-SCH-JMP-PA-CBSA-002
for signage incorporating EDNEs

Backing to Stove Enamel Face
Panel

Flush finished corner locking
mechanism

CCTV shown indicatively.
(Bosch VDC 485)
Refer to signage schedule
for number of CCTV integrated
into signage box.

Totem beyond

Detail applicable to
PG-04.01
BR-02.02
BR-02.04
For structural design of signage box
and support for EDNE, refer to
relevant structural engineer's drawings.

5 8

400

180

EQ

EQ

Gap to be consistent

Stove Enamel Face Panel,
Graphics Screen Printed
as SGN-03a

Signage panel hinges
for access where required.
Gas strut to hold panel in open
position.

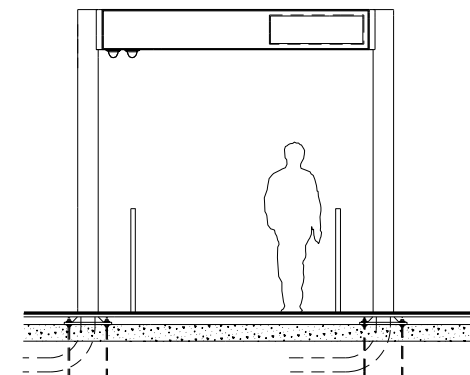
Backing to Stove Enamel
Face Panel

Flush finished corner locking
mechanism

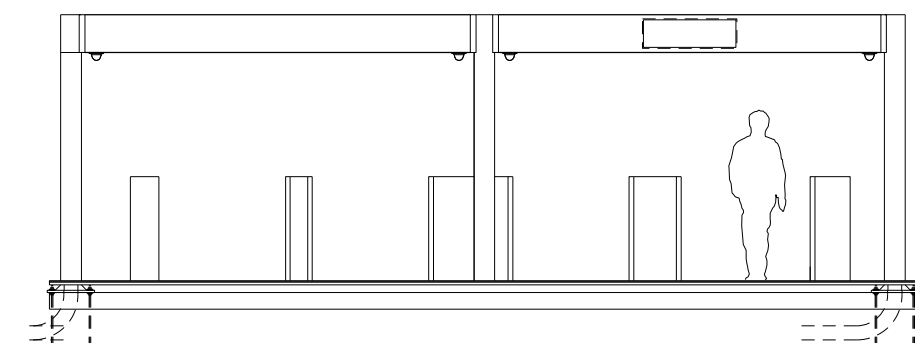
100 mm Ø cut out for CCTV
(only where CCTV are located)

CCTV centered on the
underside of signage box
where required

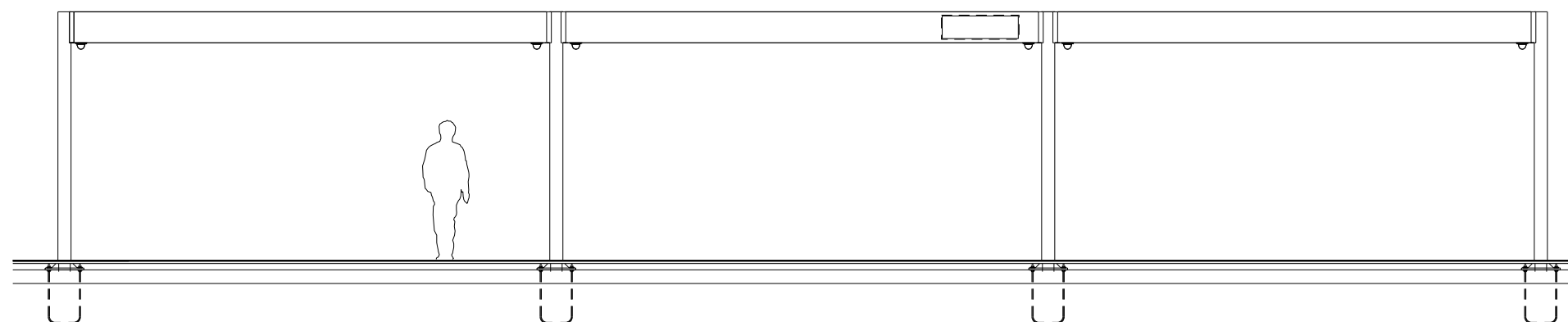
02 SECTION - SIGNAGE BOX FIXED TO TOTEM SCALE 1:2



Refer to Totem Design Intent
Drawing PA-CAD-0048

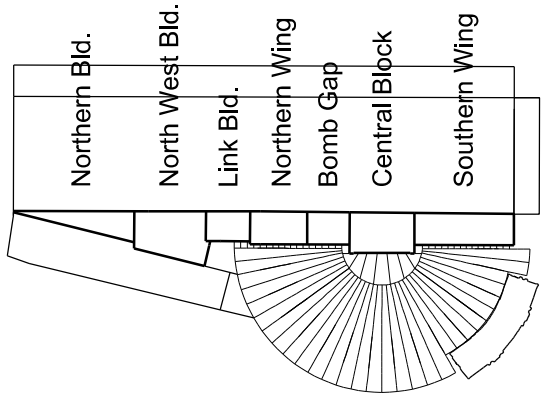


Refer to Totem Design Intent
Drawing PA-CAD-0051



Refer to Totem Design Intent
Drawing PA-CAD-0049

04 TOTEM: KEY ELEVATIONS



Notes

Drawings are based on survey data and may not
accurately represent what is physically present.

Do not scale from this drawing. All dimensions
are to be checked on site and any discrepancies
noted in writing to the Employer's Representative.
All dimensions are in millimetres unless noted
otherwise.

Where there appears to be ambiguity between
the drawings and other information, the Contractor
shall seek the advice of the Employer's
Representative for clarification.

Refer to drawing KX6-CAG-0000 for general notes
and abbreviations. For detail of Architectural
Specification codes (shown on drawings as 'LIN-01',
for example) refer to the Technical Reference Sheet.

Drawings to be read in conjunction with the
Architectural Specification and other relevant
information, including the schedules and Engineer's
documents. For individual repair locations, details
and scope, refer to the repair schedule and
Architectural Specification as applicable.

Half tone line work shows scope by others. Refer to
detail drawings for further scope definition.

Refer to GA plans for finished floor levels

Lighting shown as indicative only.
Refer to M&E engineer's information for
lighting details and location

General Note:

For detailed design of the integration of
assets into the station signage e.g.
EDNE panels and CCTV refer to the
services and comms' documentation.

Refer to Signage Schedule for Details:
ENG-SCH-JMP-PA-CBSA-0002

Refer to Drawings numbers:
PA-CAD-0100 to 01119
Refer to these drawings for Signage only.
Graphics to be agreed by NR and signage consultant
Refer to signage drawing for indicative graphics
ENG-DWG-JMP-PA-CAD-0099

04	04/07/11	JMP	JW	SG
For Construction				
03	06/06/11	UR	JW	SG
For Construction				
02	01/04/11	JMP	JW	SG
For Construction				
01	21/01/11	JMP	PC	SG
For Information				
Issue	Date	By	Chkd	Appd

Client



Author

JOHN MCASLAN + PARTNERS

7-9 William Road
London NW1 3ER
T +44 (0)20 7313 6000
F +44 (0)20 7313 6001
www.mcaslan.co.uk

Job Title

King's Cross Station
Redevelopment Programme
Package 6

Drawing Title

King's Cross Station
Wayfinding Signage
Signage Type PG-04.01, BR-02.02
BR-02.04

Scale at A1

1:2

CCMS No

Drawing Status

For Construction

JMP/Job No	Drawing No	Rev.
1243.14	PA-CAD-0102	04