





Do not scale from this drawing. All dimensions should be checked on site for accuracy.

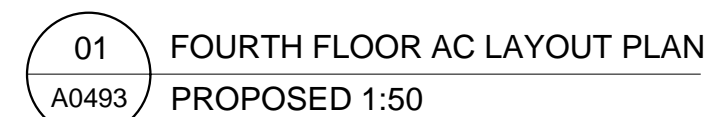
Structural Work
All indications as to structure are for graphic purposes only and must not be relied upon for accuracy in terms of size, detail or position. All structure and temporary propping to be confirmed by a suitably qualified structural engineer before beginning works.

Survey Information
This survey has been carried out and drawn by Ploymman Craven in October 2010 to an accuracy consistent with a presentation scale of 1:50.
All levels are in meters, related to Newlyn datum based upon OSBM value situated on NW face of School of Arts and Crafts, Theobalds Road.
The survey grid shown on this drawing uses a local origin and is orientated arbitrarily.
All quoted dimensions are in metres.

	RADIATOR
	WALL MOUNTED AC UNIT (HIGH LEVEL)
	WALL MOUNTED AC UNIT (HIGH LEVEL, CONCEALED PIPEWORK)
	FLOOR MOUNTED AC UNIT IN CASING

--- PROPOSED AC PIPE RUNS

REMOVAL OF EXISTING ELEMENTS



CANAWAY FLEMING ARCHITECTS

Canaway Fleming Architects Ltd
The Dutch House
307 - 308 High Holborn
London WC1V 7LL
T: 020 7430 2262
F: 020 7430 2274
E: mailbox@canawayfleming.com

Project 16-19 Southampton Place, London

Date July 2011 Scale 1:50 @ A

Project 064	Origin A	No. 0493	Revision -
Status PLANNING	Drawn MN		Checked MC