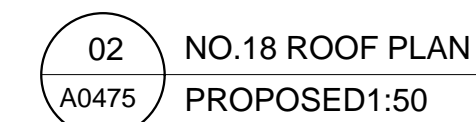
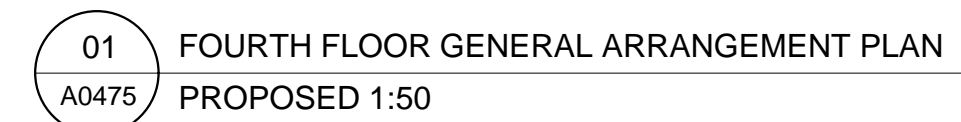


Survey Information
This survey has been carried out and drawn by Plowman Craven in October 2010 to an accuracy consistent with a presentation scale of 1:50.
All levels are in meters, related to Newlyn datum based up OSBM value situated on NW face of School of Arts and Crafts, Theobalds Road.
The survey grid shown on this drawing uses a local origin and is orientated arbitrarily.
All quoted dimensions are in metres.

 PROPOSED PANEL HEATER



Project 064	Origin A	No. 0475	Revision -
Status PLANNING	Drawn ZS	Checked MC	