

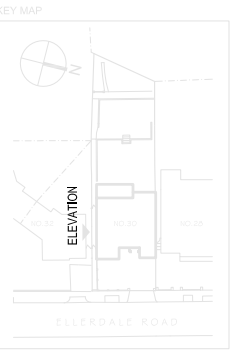
General notes:

This drawing is copyright of KSR architects. The drawings must be read in conjunction with specifications and all other relevant documentation and drawings.

KSR Architects accept no liability for any expense, loss or damage of whatsoever nature and however arising from any variation made to this drawing or in the execution of the work to which it relates which has not been referred to them and their approval obtained.

All technical compliance and statutory approvals to be obtained by a directly appointed Russian architect. Check all dimensions on site prior to carrying out any works.

Notes/Legends



P2 PLANNING APPLICATION 11.10.11 SHY RS  
P1 PLANNING APPLICATION 11.10.11 SHY RS

Rev Notes Drawn By Checked By

0 KSR architects

Drawn

PLANNING

Key Plan

KSR  
architects

KSR architects  
14 Greenford Street  
London  
NW1 0ND

t: +44 (0)20 7692 5000  
t: +44 (0)20 7692 5050  
www.ksr-architects.com

Project:  
30 Ellerdale Road  
London NW3 6BB

Title:  
PROPOSED SIDE (SOUTH)  
ELEVATION

Date: Oct 2011 Drawn By: SHY Checked: RS

Scale: 1:50 @A1 / 1:100 @A3

Project Ref: ELL-014 Drawing No: ELL-014 Revision: P2

PROPOSED SIDE (SOUTH) ELEVATION

