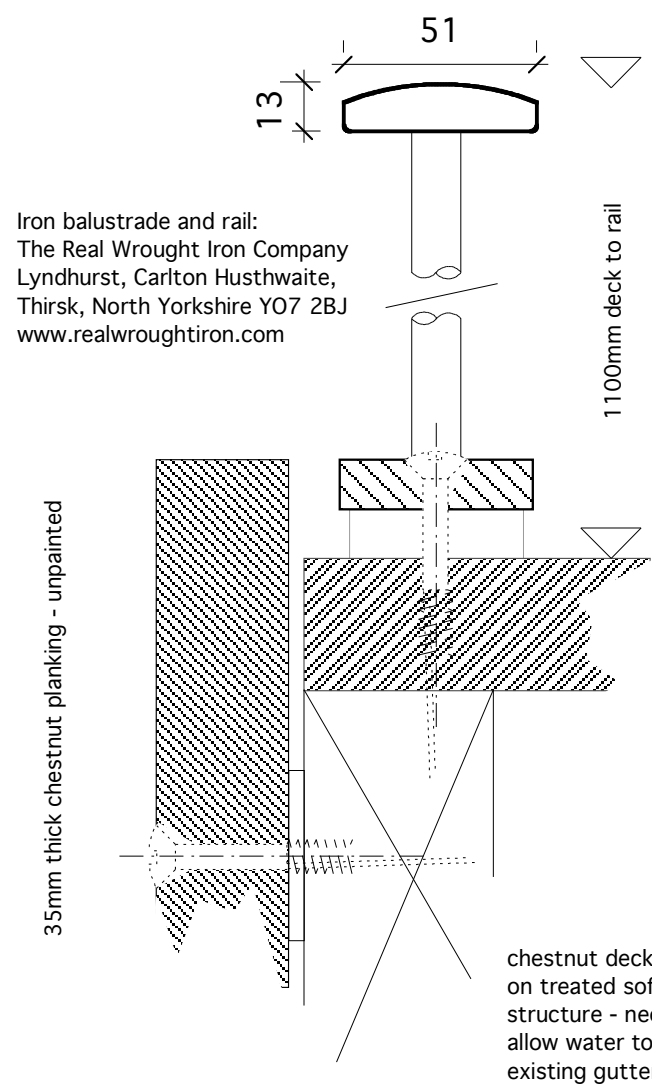


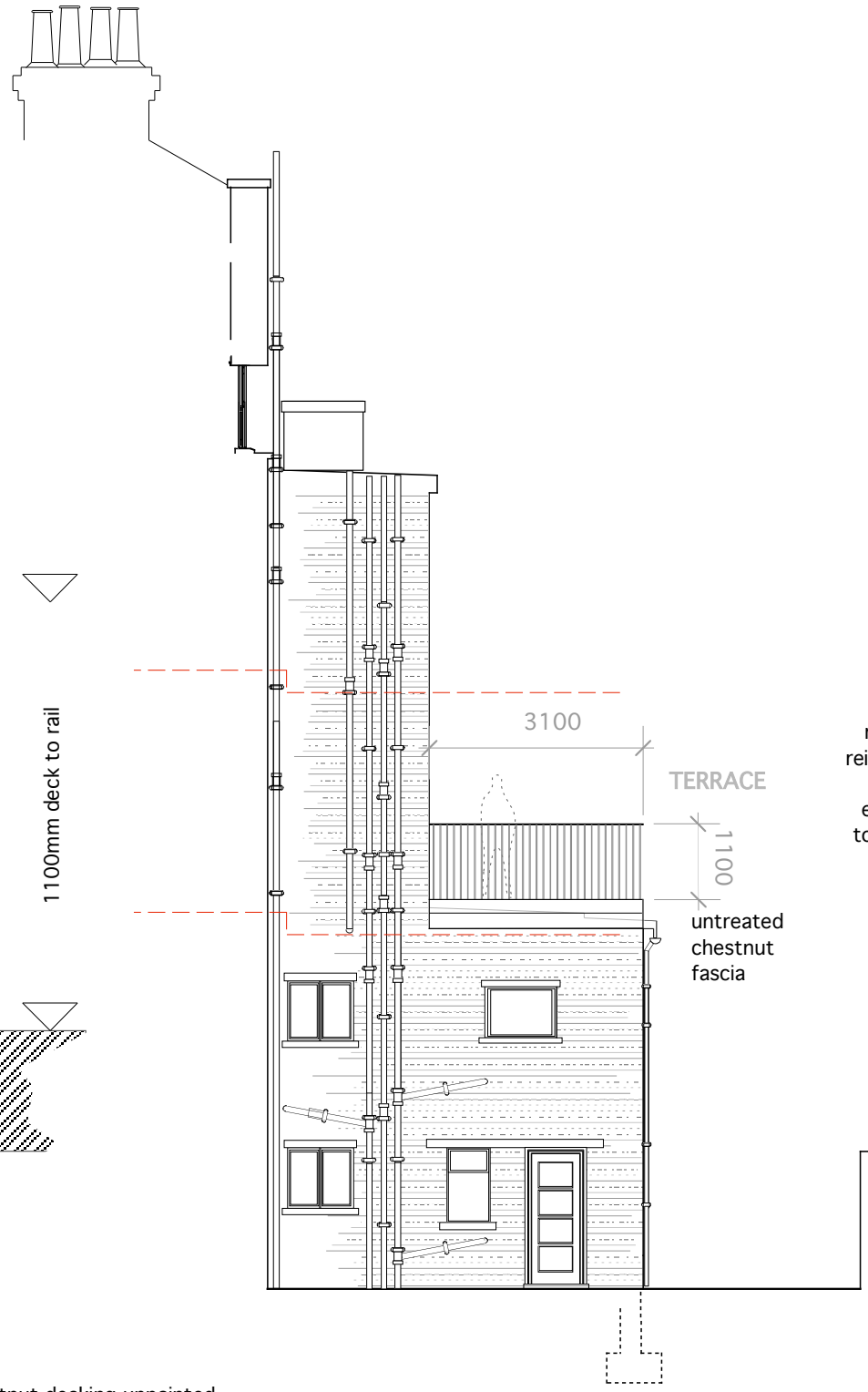
PROPOSED rear elevation 1:100

PROPOSED handrail detail A 1:2

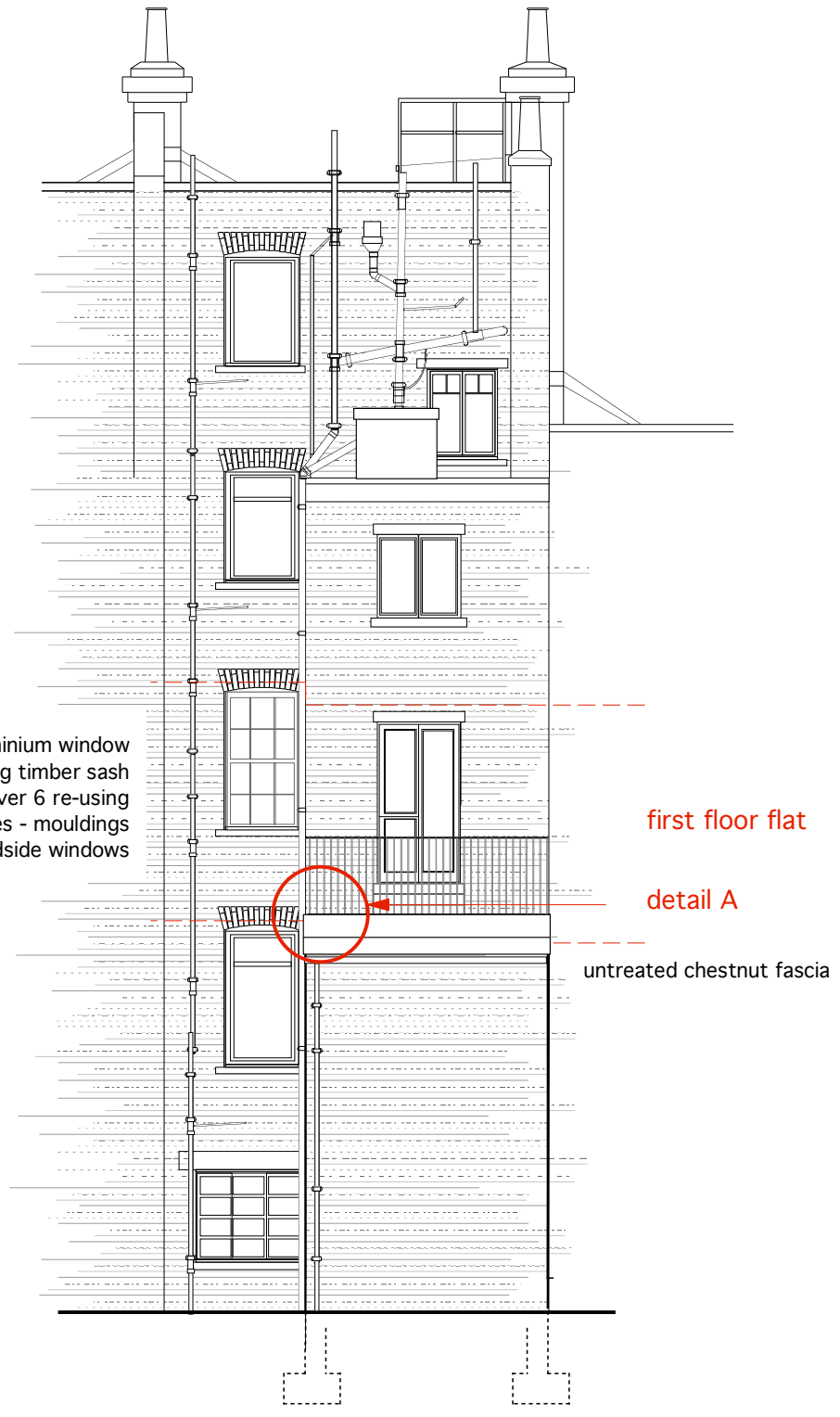


Iron balustrade and rail:
The Real Wrought Iron Company
Lyndhurst, Carlton Hustwaite,
Thirsk, North Yorkshire YO7 2BJ
www.realwroughtiron.com

scale 1:100 1.0m 2.0m 5.0m



remove aluminium window
reinstall sliding timber sash
window 6 over 6 re-using
existing boxes - mouldings
to match roadside windows



Arts Lettres Techniques Limited 2011 copyright is retained ©

arts lettres techniques	ARCHITECT	Arts Lettres Techniques Limited 2011	copyright is retained ©
33 A ARLINGTON ROAD	LONDON NW1 7ES T/F (020) 7383 4778	Alan.Chandler@member.riba.org	ALL DIMENSIONS MUST BE VERIFIED ON SITE
PROJECT	PRINCESS ROAD	NUMBER	PR 007
SUBJECT	proposed rear elevation / detail	SCALE	1:100/1:2 @ A3
		REVISION	
		DATE	18/05/11