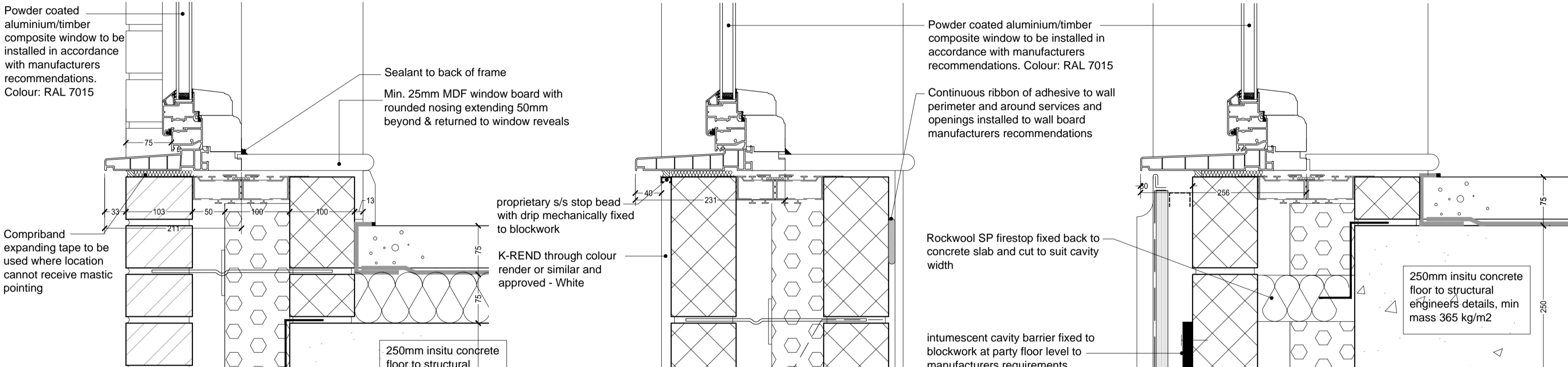


Win 1 - Window head in external brickwork wall

Win 2 - Window head in external rendered wall

Win 3 - Window head in external rainscreen clad wall

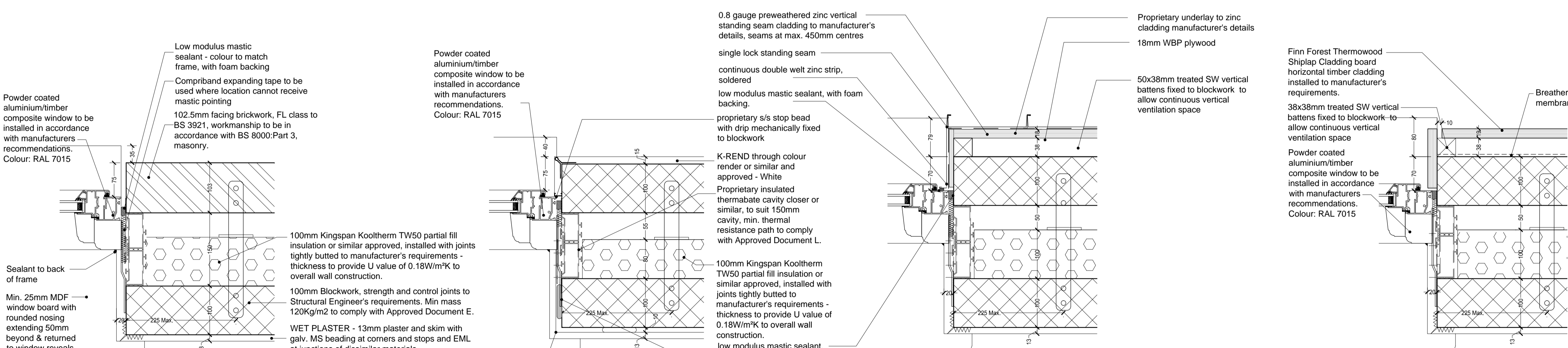
Win 6 - Window head to timber cladding



Win 1 - Window cill in external brickwork wall

Win 2 - Window cill in external rendered wall

Win 3 - Window cill in external rainscreen clad wall



Win 1 - Window jamb in external brickwork wall

Win 2 - Window jamb in external rendered wall

Win 3 - Window jamb in external rainscreen clad wall

Win 6 - Window jamb to timber cladding

DRYLINING TO PLOT 1 ONLY - Plasterboard on dabs; all joints to be reinforced with Gyproc joint tape or similar approved, with galv. MS beading at corners and stops and EML at junctions of dissimilar materials. 3mm skimcoat to be applied.

Limitation of responsibilities
this drawing is not to be scaled.
the scope of the architects work is limited to the production of drawings and information leading to the commencement of work on site.
the architects are not responsible for the administration of the contract nor the quality of work on site.
decisions that are essential to the implementation of the construction on site are to be at the sole risk and discretion of the contractor and no responsibility is taken in contract or tort for any such decision.
the accuracy of 'as built' information is reliant upon the quality and completeness of the information provided by the main contractor.

notes:

NOTE
This drawing may be subject to revision and amendment due to instructions & comments by other including:

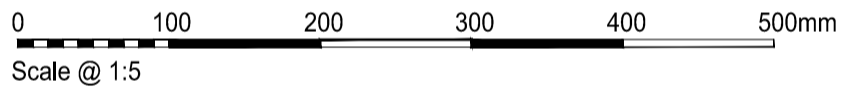
- Planning approval & conditions
- Building Regulations approval & conditions
- Client comments
- Employers Agent comments
- CPDA / Secured by Design comments
- M&E contractor design co ordination
- Engineering design
- Specialist subcontractor / supplier co ordination & comments

External wall construction 1 <i>Target U-value = 0.18w/m²K</i>	
External facing brickwork	102.5mm
Clear cavity	50mm
Cavity insulation (Kingspan TW50) - GWP < 5	100mm
Inner blockwork leaf	100mm
Wet plaster	13mm

External wall construction 2 <i>Target U-value = 0.18w/m²K</i>	
Render	15mm
Outer leaf blockwork	100mm
Clear cavity	50mm
Cavity insulation (Kingspan K17) - GWP < 5	80mm
Inner blockwork leaf	100mm
Plasterboard on dabs	13mm

External wall construction 3 <i>Target U-value = 0.18w/m²K</i>	
Zinc cladding	60mm
External facing blockwork	100mm
Clear cavity	50mm
Cavity insulation (Kingspan TW50) - GWP < 5	100mm
Inner blockwork leaf	100mm
Wet plaster	13mm

CFSH notes
Mat 1, Mat 2 and Mat 3
Bugler Developments to confirm which timber products need to be supplied with chain of custody certification



D	AF	13/10/11	aluminium cover strip added to window head details Win1, Win2, Win3 & Win6	af
C	te	19/07/11	Window profiles revised. Zinc cladding added.	af
B	te	28/02/11	Issued for construction.	af
A	te	16/12/10	Window positions revised. Details added to 2nd drawing. Issued for approval.	af
rev	by	date	revision	cd.

status

For construction

1-5 St Pancras Way, NW1

Window details

Sheet 1

date	drawn	scale	@ A1	cd.
05/11/10	te	1:5	af	
job number	drawing number	revision		
0524	(21)04	D		

10 - 18 Vestry Street
London N1 7RE
t: 020 7251 5573
london@mepk.co.uk
www.mepk.co.uk

MEPK
ARCHITECTS