

Tree Removal Plan (Proposals Overlaid)



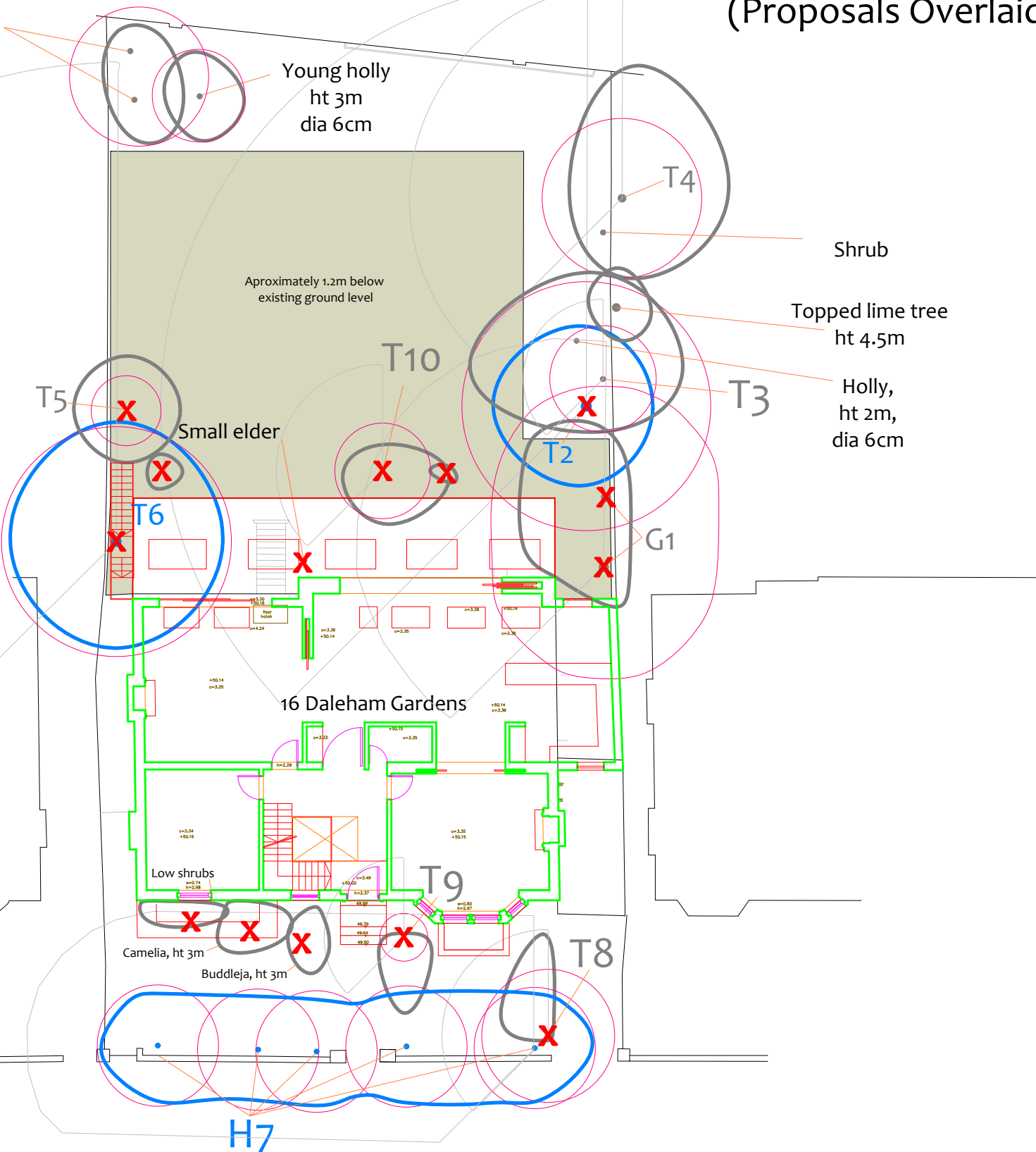
Poorly formed, low quality laburnum trees dia 15cm

Young holly
ht 3m
dia 6cm

Shrub









Topped lime tree
ht 4.5m

Holly,
ht 2m,
dia 6cm



BS 5837 Retention Categories

- Category A:**
Trees of high quality and amenity. Usually mature trees with a significant life expectancy which would enhance any development. Retention of these trees is strongly encouraged.
- Category B:**
Trees of moderate quality and amenity. Usually mature trees, or younger trees with exceptional form. Retention of these trees is desirable though the removal of occasional specimens may be acceptable.
- Category C:**
Trees of low quality and amenity. The removal of these trees should generally be seen as acceptable in order to facilitate development.
- Category R:**
Trees whose structural condition is such that they should be removed if development is to proceed.

 CROWN Arboricultural Consultants 01422 316660	Site: 16 Daleham Gardens			BS 5837 Shade Pattern		Tree to be removed
	Ref No: o8475C/TRP			BS 5837 Root Protection Area		Stem & canopy of Category A tree
	Scale: 1:200		T1	Tree number 1		Stem & canopy of Category B tree
	Paper Size: A3		G2	Group number 2		Stem & canopy of Category C tree
			H3	Hedge number 3		Stem & canopy of Category R tree