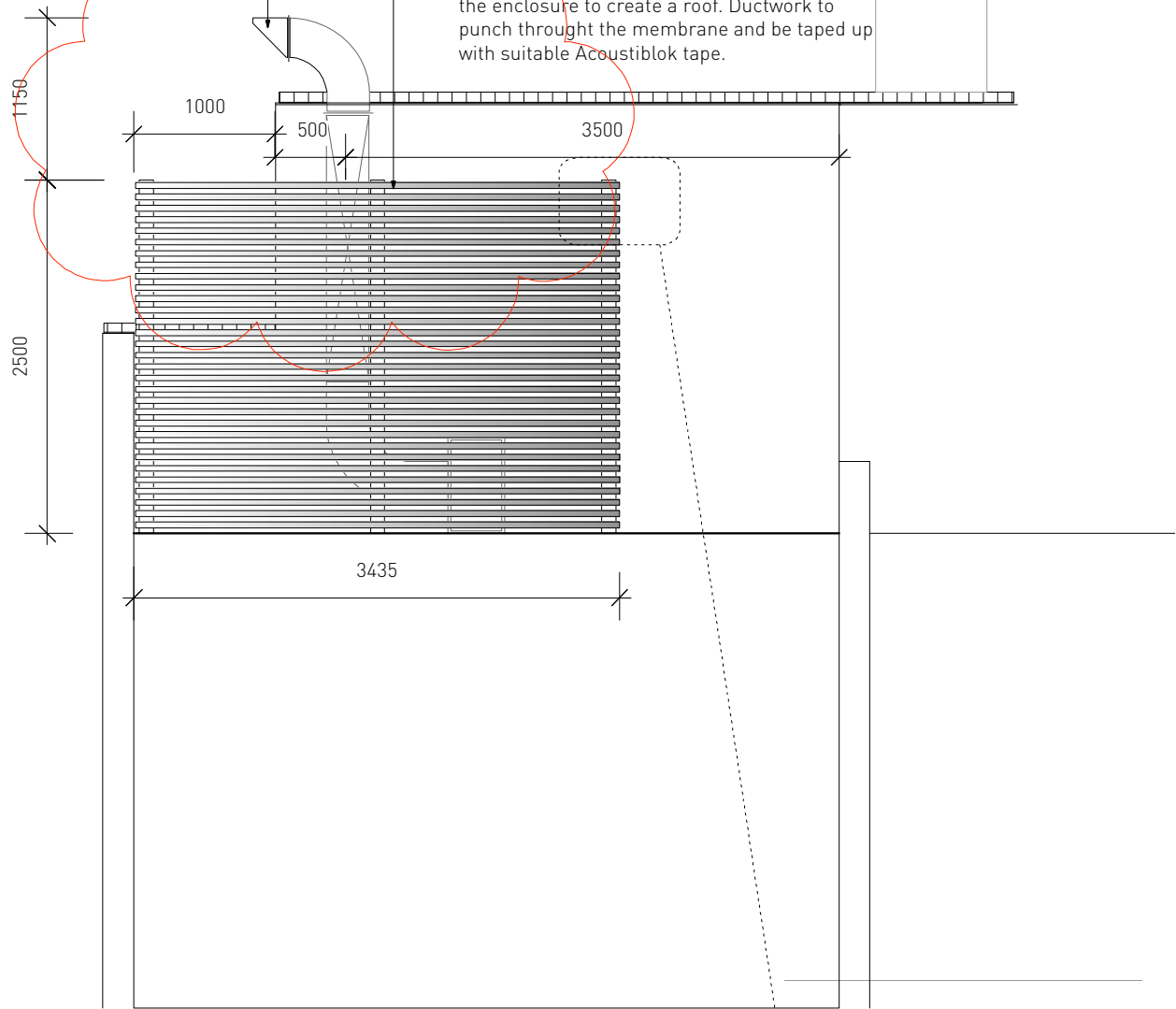




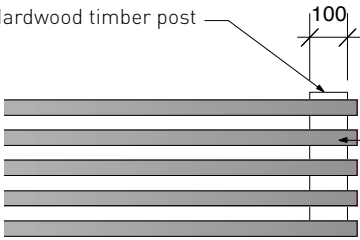
Birds beak cowl with meshed aperture to direct the extract over the adjacent open space.

Slatted timber screen in treated softwood stained in a colour to be confirmed. The inner side of the screen is to have a 3mm Acoustiblok membrane with a 50mm fibrous acoustic absorber. Acoustic membrane to continue over the enclosure to create a roof. Ductwork to punch through the membrane and be taped up with suitable Acoustiblok tape.



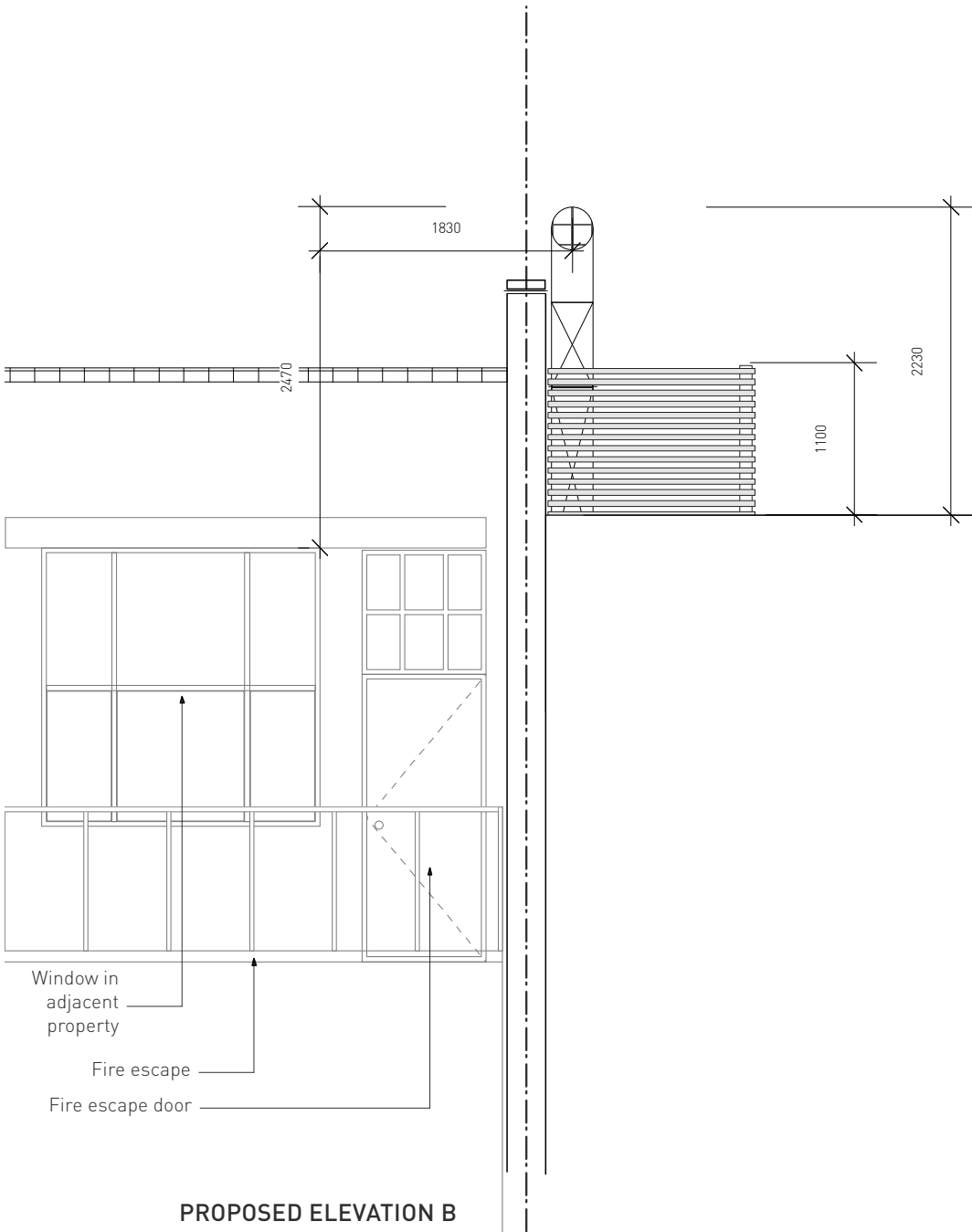
PROPOSED ELEVATION A  
1:50

100 X 100mm Hardwood timber post




40 X 40mm Timber slats

DETAIL OF TIMBER SCREEN  
1:20



PROPOSED ELEVATION B  
1:50

REVISIONS:	
FIRST ISSUE	25.07.11
A Amended enclosure & equipment position	
Added elevation B	11.10.11



TITLE	
PROPOSED ELEVATION A	
CLIENT	
GREENLEAF INVESTOR	
PROJECT	
48 RED LION STREET, WC1	
DRAWING NO.	REVISION
201	A
JOB NO.	DATE
1075	25.07.11
DRAWN BY:	SCALE
SE	1: 50 @A3

This drawing is the copyright of SEED Design. Figured dimensions to be taken in preference to those stated. All dimensions to be checked on site before any work proceeds. The contractor is to provide full site setting out drawings based on the information contained in this drawing for the designers approval prior to commencing manufacture. The drawing is issued on the condition that it is not reproduced, related or disclosed to any unauthorised person either wholly or in part without the consent in writing from SEED Design.

SEED Studio Ltd, 1 Queens Square, Bath, BA1 2HA  
Tel. 01225 904554 info@seeddesign.net