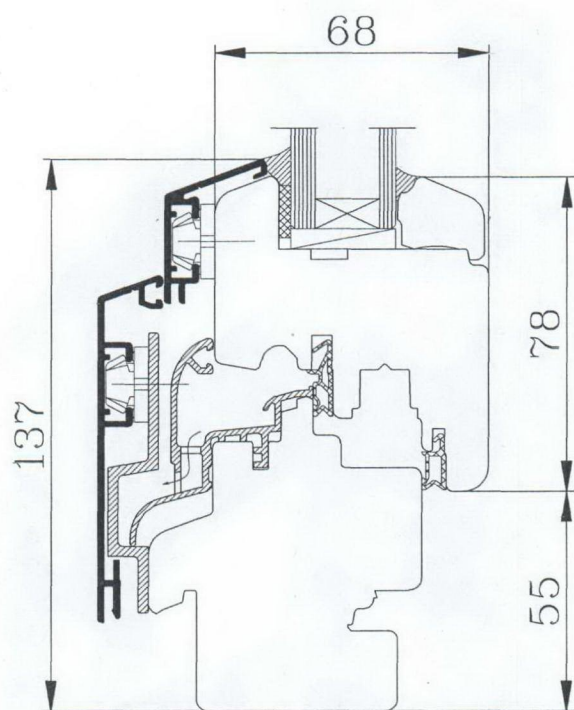


Specialists in Timber and Aluminium Clad Windows



Specialists in Timber Windows

TRC Contract Services specialise in the design, manufacture and installation of timber windows.



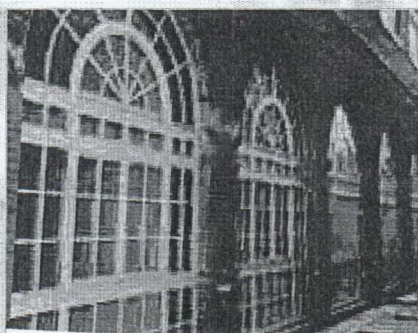
All window systems are manufactured in an ISO9001 registered factory and meet the performance requirements of BS6375, BS5268 and BS5368 for wind resistance, weather-tightness, operation, strength and air-permeability. Windows are also tested to BS7590 for enhanced security.

Our windows conform to part L of building regulations by using sealed unit glazing with low E coating and argon filled cavities for increased warmth and comfort.

The management for all timber window projects is supported by stringent quality control procedures. These are regularly assessed and checked throughout a contract period. Qualified professionals carry out all work using the highest quality materials and the latest technology available.

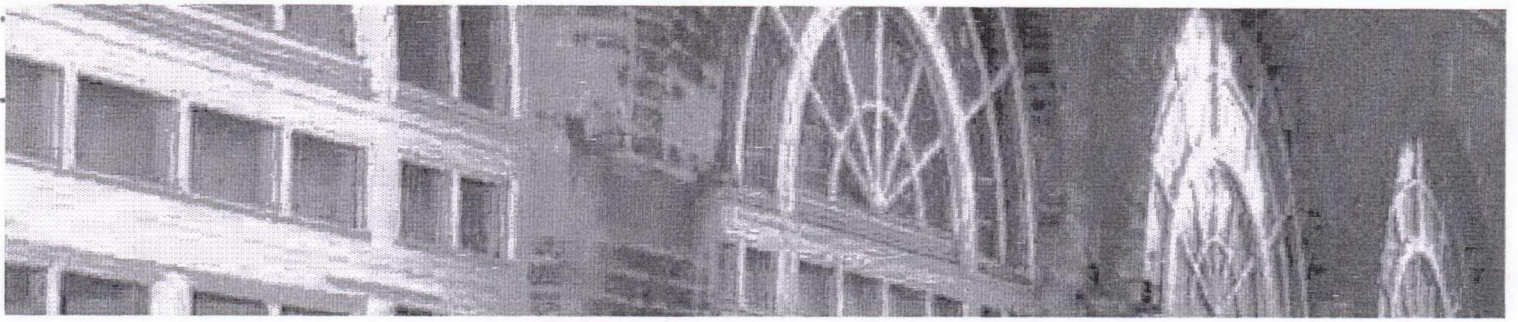
TRC Contract Services' success is built on uncompromising customer service from fully trained experienced staff, backed by a management team committed to long lasting relationships.

Our Work



Railstore

TRC were awarded the design, manufacture and installation of the windows and lanterns to TRC Contract Services. The prestigious refurbishment of the heritage building in Romford Essex, saw these two listed railway buildings converted into apartments.



Our Product Range

TRC Contract Services offer a 10 year insurance backed guarantee as standard on all windows. This guarantee is offered in addition to your statutory rights.



Softwood

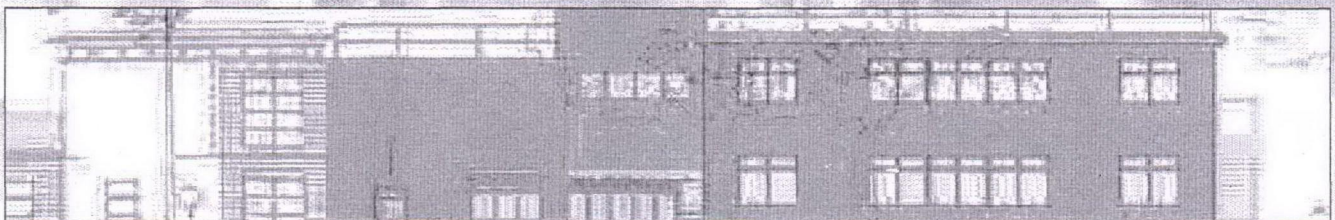
TRC Contract Services use engineered softwoods taken from sustainable sources. These windows provide excellent weather resistance and are available in any softwood required.

Hardwood

The hardwood windows can be made from any timber specified, which creates a high quality finish and an extremely durable product.

Aluminium Clad

Aluminium clad outer frames are available in the full RAL colour range. The aluminium outer is powder coated giving a tough weather resistant exterior, whilst the timber inner gives a warm natural finish. We can also provide matching wall cladding.



St Josephs Primary School, Maida Vale

TRC Contract Services were awarded the contract on this school extension by ACP architects. ACP chose aluminium clad windows as this range provided the flexibility required whilst being low maintenance, high security and excellent value for money. The contract included fully integrated doors, opening windows and screens and circular windows. A complex part of the project required TRC Contract Services to design, create and install a modern entrance to the building with a curved display area.

Specialists in Timber Windows

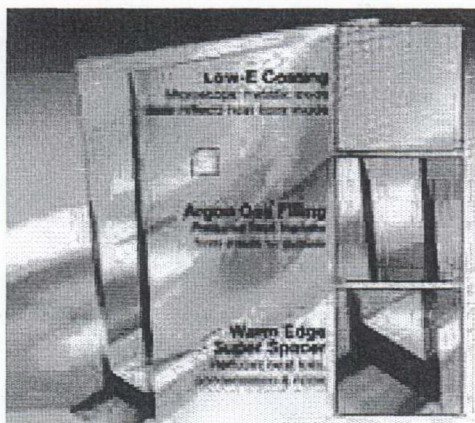
Windows and doorsets



Windows and doorsets can include a variety of glazing units:

- Insulated glazing units (using selective coatings)
- Solar control, reflective (mirror) glazing units
- Acoustic glazing units
- Laminated glazing units
- Fire-resistant glazing units
- Tinted, frosted and obscure units
- Safety glazing units (toughened)

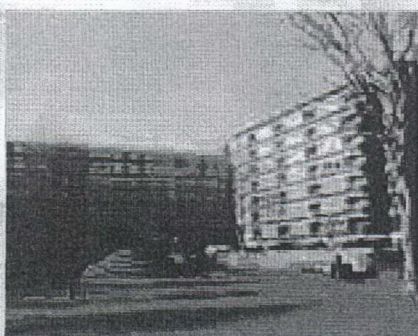
U values



Whole window U values
(including edge effects and frame)

- Double glazed
- Standard 1.6 W/m²K
- With 'warm edge' spacers 1.3 W/m²K
- Triple glazed
- Standard 1.1 W/m²K
- With 'warm edge' spacers far exceeds 1.0 W/m²K
- Calculated to BS EN 10077 pt 1 & 2 – using BRE software

Hanworth House

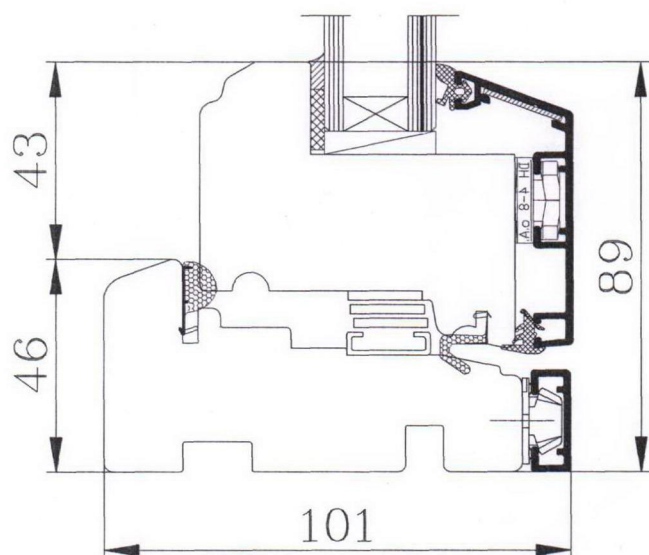


London borough of Southwark

TRC carried out the supply, design and installation of over 800 timber tilt and turn windows to Hanworth House – the main contractor was Apollo and the client was the London borough of Southwark, the contract also involved the replacement of 1,500sq metres of cedar cladding and was carried out over a 10 month period.



Outward Opening Windows



Main features

- Scandinavian redwood
- PN Combi profile/system
- Double glazing
- Wide colour palette – RAL colours
- Good thermal insulation
- Laminated timber
- Friction stays or fully reversing

Various styles

- Top Hung
- Projecting Top Hung
- Reversible
- Side Swing
- Projecting Side Hung
- Side Hung

Also available without aluminium cladding.

100%



The Forestry of the Forest Stewardship Council (FSC) indicates that the wood used to make the product comes from a forest which is well managed according to strict environmental, social and economic standards. The Forest of origin has been independently inspected and certified according to the principles and criteria for forest management agreed and approved by the Forest Stewardship Council. FSC is an international, not-for-profit association whose membership comprises environmental and social groups and progressive forestry and wood related companies working in partnership to improve forest management worldwide.

© 1996 Forest Stewardship Council Ltd

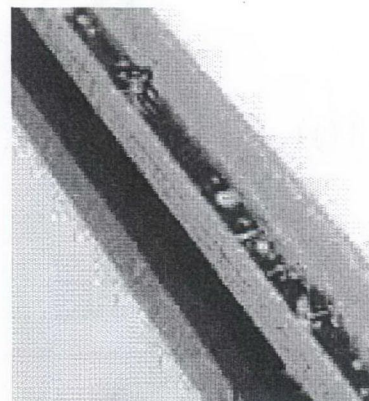


Oval Road

TRC were awarded the supply, design and installation of timber and Aluminium clad windows and sliding doors to this high quality residential development in Camden.

Specialists in Timber Windows

Inward Opening Windows



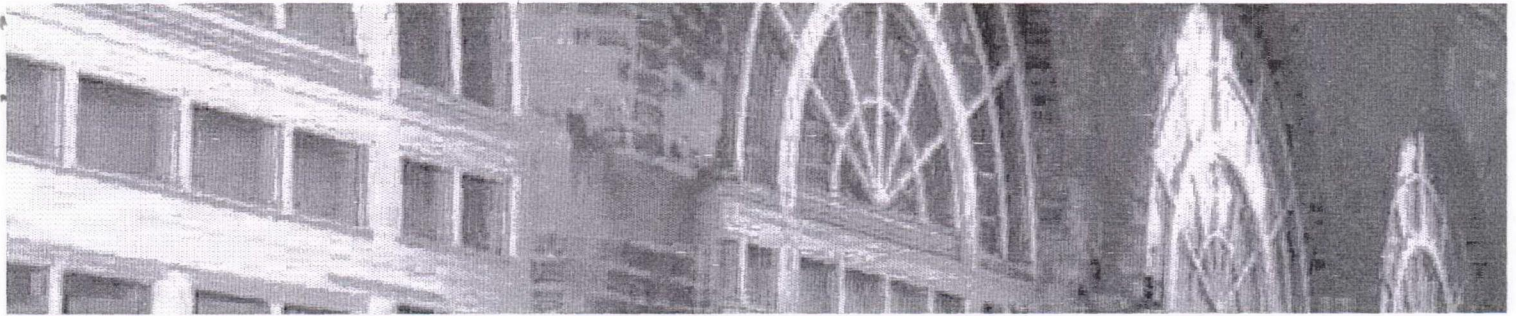
There are two timber window profiles available: 'EURO IV 68 SOFTLINE' (for double glazing) and 'EURO IV 78 SOFTLINE' (for triple glazing).

Private Residence



Cambridge

TRC not only undertake commercial and social housing projects, but are able to offer products that are suitable for private houses. This is a project we undertook in Cambridge with Timber/aluminium composite windows



Aluminium clad timber

High security hardware, hinges and hinge covers.

Aluminium cladding, protecting the timber beneath against the elements, pollution, and weathering.

Optional 'warm-edge' spacer.

Argon gas cavity fill. Double glazed window has a whole window U value of 1.6W/m²K. With triple glazing the whole window U value can be as low as 1.1 W/m²K.

Mitred corners give a neater finish to the cladding.

FSC 100% certified engineered timber.

Cladding secured with a proprietary clip system.

Microporous wood protection and finishing system. Totally water-based.

Cladding available in any RAL colour.

Dedicated jointing bolts ensure precise cladding connections.

The profiled aluminium drip rail gives additional protection against any possible moisture ingress.

The aluminium profile is designed to allow fully ventilated timber sections.



Our Clients Include:

Apollo Construction Ltd

Balfour Beatty Construction Ltd

BAMConstruction Ltd

Barratt Homes

Berkeley Homes

Birmingham City Council

Blue Print Estates

Borras Construction Ltd

Buckinghamshire County Council

Camden Council

Carrilion

Crispin & Borst

Crosby Homes

Enfield Council

Fairbriar Homes

G.F. Holding Contractors Ltd

Gateshead Council

George Wimpey

Hackney Council

Harlow Council

ISG

Islington Council

Jesus Fellowship

John Ratcliffe Hospital

John Sisk

Leicester City Council

Lengard Ltd

Mace

Mansell Plc

Martin Ward & Keeling

The Methodist Church

NHS Trust

Nicholas King Homes

Nilsson Design

Overbury Plc

Parkeray

Persimmon Homes

Pick Everard

Sandwell Metropolitan
Borough Council

Sindall Ltd

Southwark Council

Stafford Borough Council

St James Homes

Swindon Borough Council

Taylor Wimpey

Teachers' Housing Association

Touchstone Housing

Vale Housing Association

Wates

Weatherall Green & Smith

Willmot Dixon

Winchester Healthcare

YJL



TRC Contracts Ltd

Head Office: Unit 2 | Union Wharf | Market Harborough | LE16 7UW | T: 01858 469 225 | F: 01858 469 249

London Office: Bank Chambers | 29 High Street | Ewell | KT17 1SB | T: 0208 786 3613 | F: 0208 786 8887

W: www.trccontracts.com | E: headoffice@trccontracts.com