

Introduction

My name is David Haralambidis and I am the tenant of the ground Floor flat 112 Croftdown Road, London, NW5 1HA. My Landlord is the London Borough of Camden. 112 Croftdown, London, NW5 1HA is a residential property and it will remain residential property after the replacement of the windows.

Past History

The Landlord, London Borough of Camden, under the Decent Homes Programme(DHP) is replacing the existing timber single glazed windows of the three flats of the block (and in the whole area) with timber doubled glazed windows manufactured by TRC Contract Services company leaving my flat out claiming that it does not meet their DHP standards.

My Request

I would like to replace the existing Georgian style timber single glazed windows at the front and rear of the Ground Floor flat with new timber Georgian style double glazed windows manufactured by TRC Contract services as the ones which they have been fitted to the rest of the block and the whole area. I will cover the related cost with my own funds. The landlord has given his consent.

Information for the windows

Details for the proposed window company TRC Contracts Ltd and its products can be found at the web link:

www.trccontracts.com

Also details, specification and u-values confirming compliance to the current Building Regulations for the proposed windows can be found at the web link below:

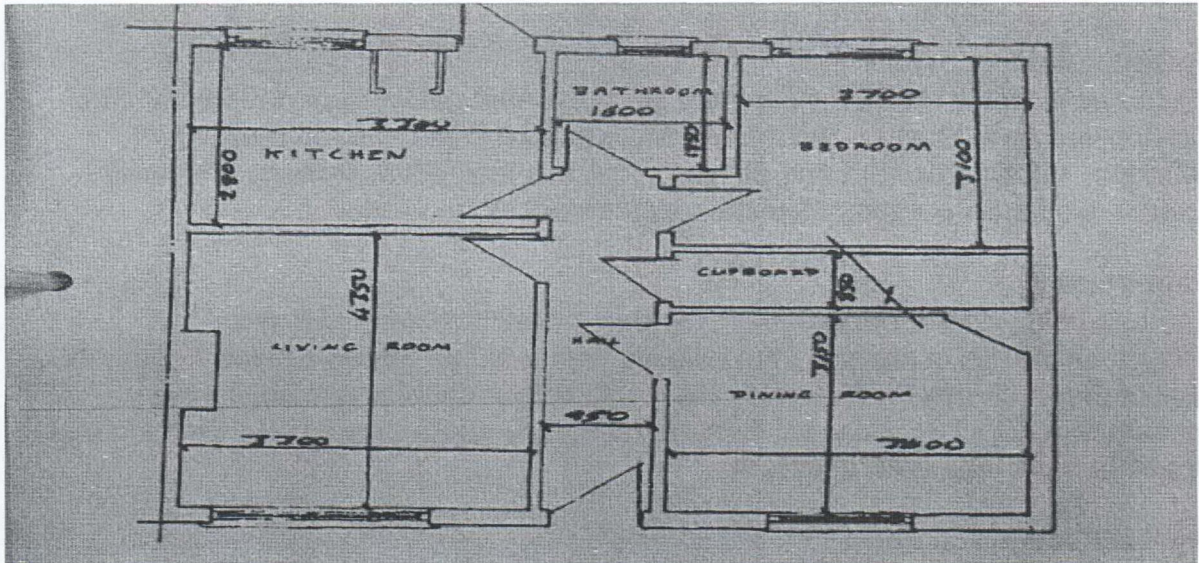
<http://www.trccontracts.com/assets/timberwindow3.pdf>

Areas and Floor space

The Ground Floor Flat is a residential property and it is consisting from the following areas:

AREA	Measurements (W x L) in mm
Bedroom	3400 x 3150
Bedroom 2	2700 x 3100
Sitting Room	3300 x 4350
Kitchen	3300 x 2800
Bathroom	1600 x 1850
Corridor	950 x 5400
Cupboard (under staircase of flat 110)	1300 x 850

A sketch plan (not in scale) of the Ground Floor flat 112 Croftdown Road, London NW5 1HA is attached below:



Front Elevation

**PHOTOGRAPHIC PRESENTATION OF THE EXISTING GEORGIAN STYLE
TIMBER SINGLE GLAZED WINDOWS OF 112 CROFTDOWN ROAD, LONDON,
NW5 1HA and COMPARISON VIEWS WITH PROPOSED NEW GEORGIAN
STYLE TIMBER DOUBLE GLAZED WINDOWS FOR INSTALLATION**





Rear Elevation



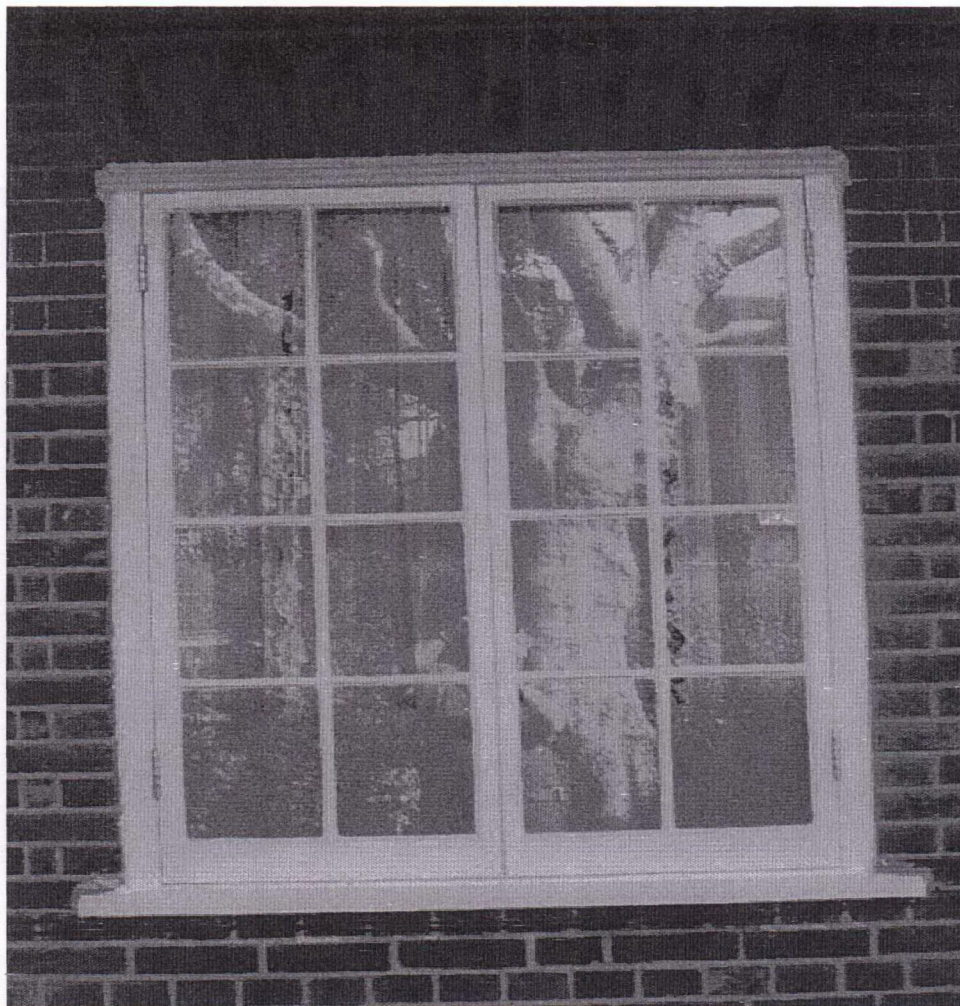
Bedroom 2 window (Rear Elevation)



Bathroom window (Rear Elevation)



Kitchen window (Rear Elevation)



Bedroom 1 window (Front Elevation)



Sitting Room window (Front Elevation)

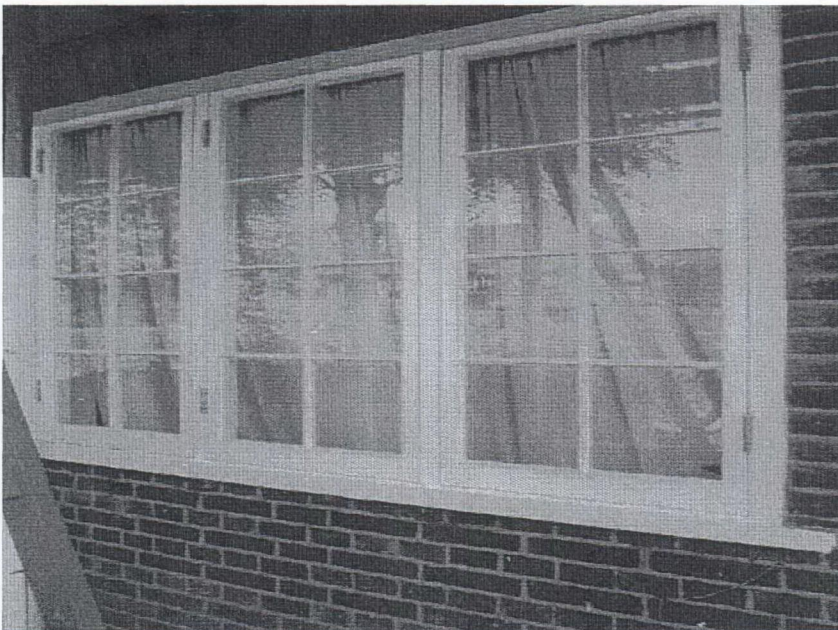
Comparison Views of Timber Single glazed with Timber double glazed windows

KITCHEN:



Kitchen window of 112 Croftdown Road (Rear Elevation).
Window in timber single glazed.

SITTING ROOM:



Sitting Room window at Ground Floor (Front Elevation).
The 112 Croftdown Road with timber single glazed window.



Sitting Room window at Ground Floor (Front Elevation).
114 Croftdown Road with timber double glazed window.



Sitting Room windows at Ground Floor (Front Elevation). On the right hand side the
112 CR with timber single glazed windows and on the left hand side 114 CR with
timber double glazed windows.

FRONT ELEVATION:



Front Elevation. 112 Croftdown Road on Ground Floor with timber single glazed windows and 110 Croftdown Road on First Floor with timber double glazed windows.



Front Elevation. 112 Croftdown Road on Ground Floor with timber single glazed windows and 114 Croftdown Road on Ground Floor with timber double glazed windows and 110 and 116 Croftdown Road on First Floor with timber double glazed windows.