

SECOND FLOOR PLAN  
1:50

BRACKET TO EACH FACE OF TRUSS FABRICATED FROM 12 mm MS PLATE BOLTED WITH 12 mm DIAMETER BOLTS

NEW 150 x 130 C24 POST

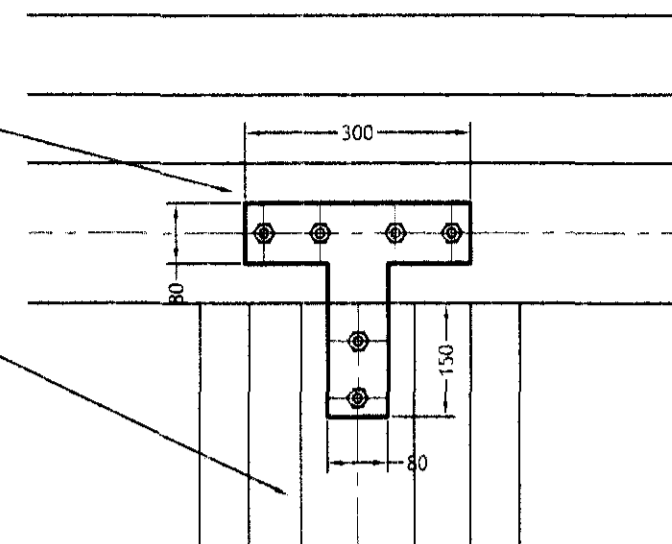
NEW 150 x 130 C24 POST

BRACKET TO EACH FACE OF TRUSS FABRICATED FROM 12 mm MS PLATE BOLTED WITH 12 mm DIAMETER BOLTS

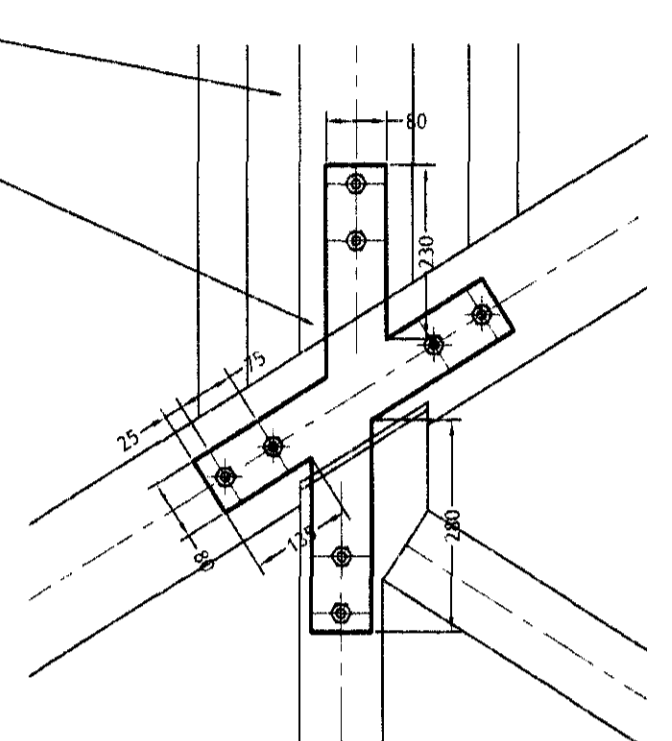
220 x 130 PRIMARY JOISTS

140 x 50 SECONDARY FLOOR JOISTS AT 340 c/c  
60 x 50 CEILING JOISTS AT 290 c/c

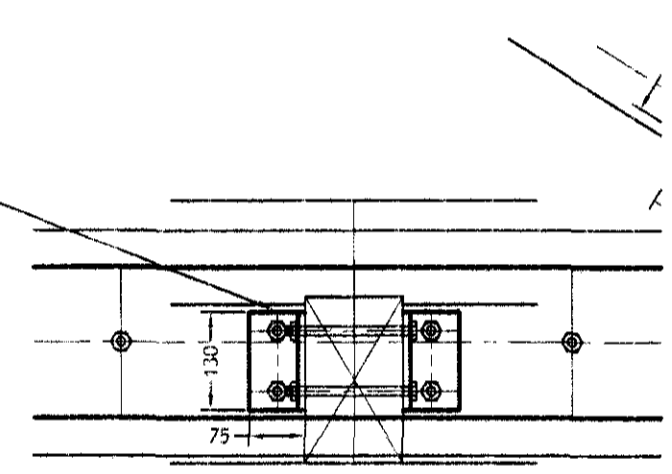
PRIMARY JOIST CUT TO ALLOW INSERTION OF PLATE, FIXED WITH FABRICATED BRACKET AND 12 mm DIAMETER BOLTS



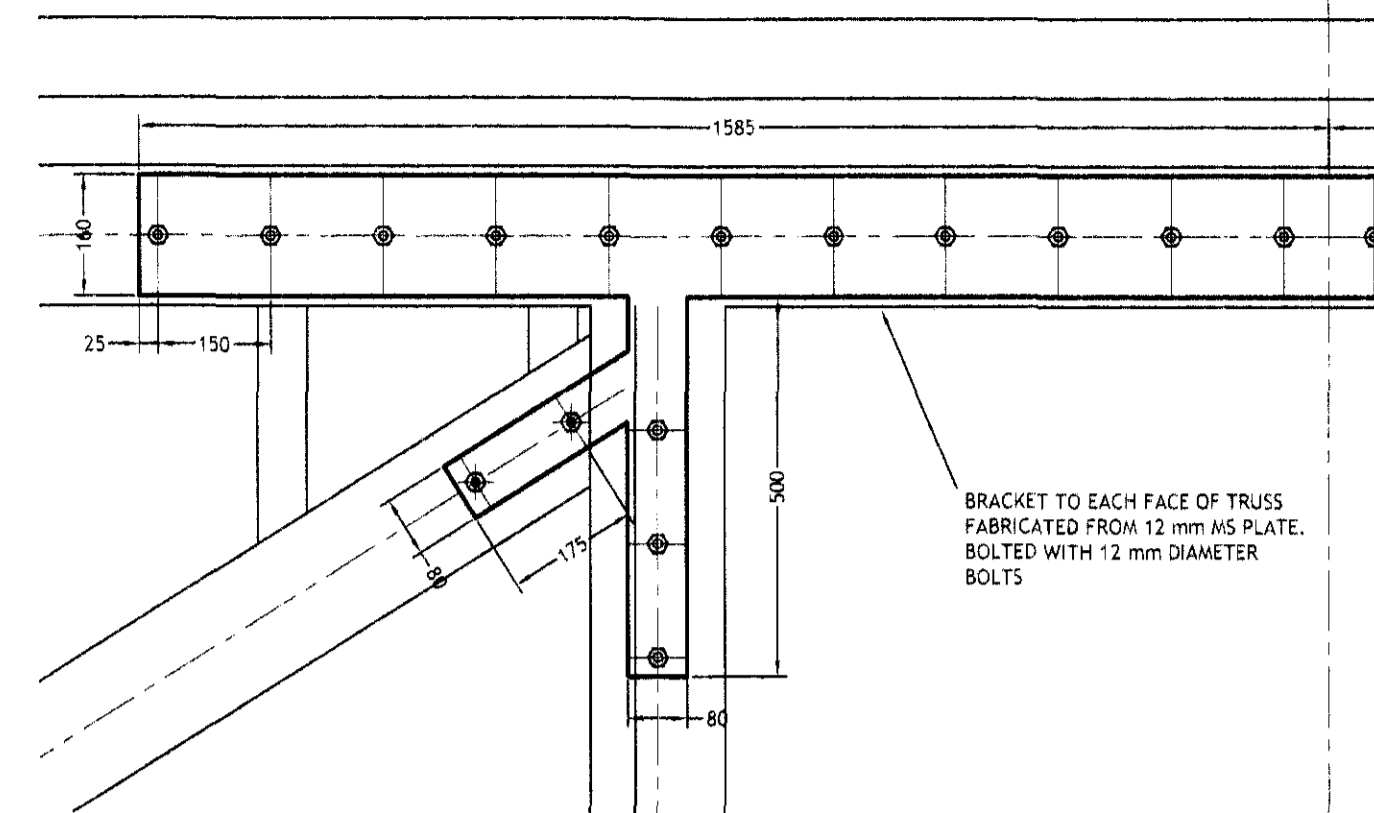
DETAIL B  
1:10



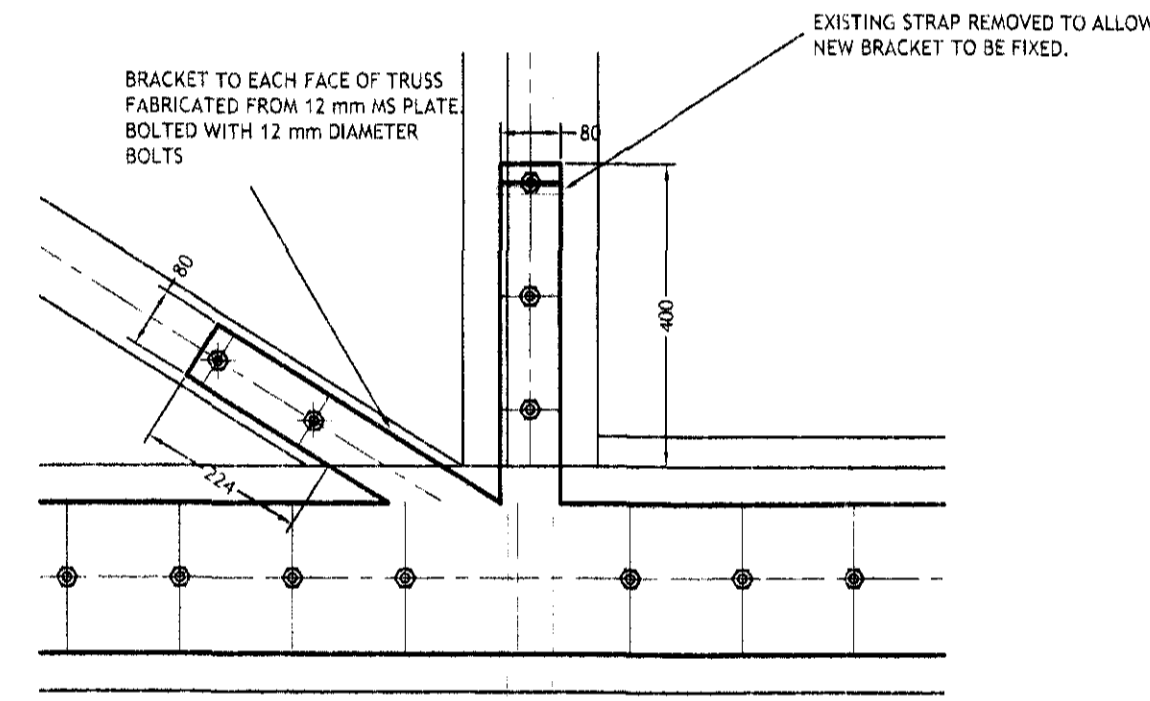
DETAIL A  
1:10



DETAIL E  
1:10

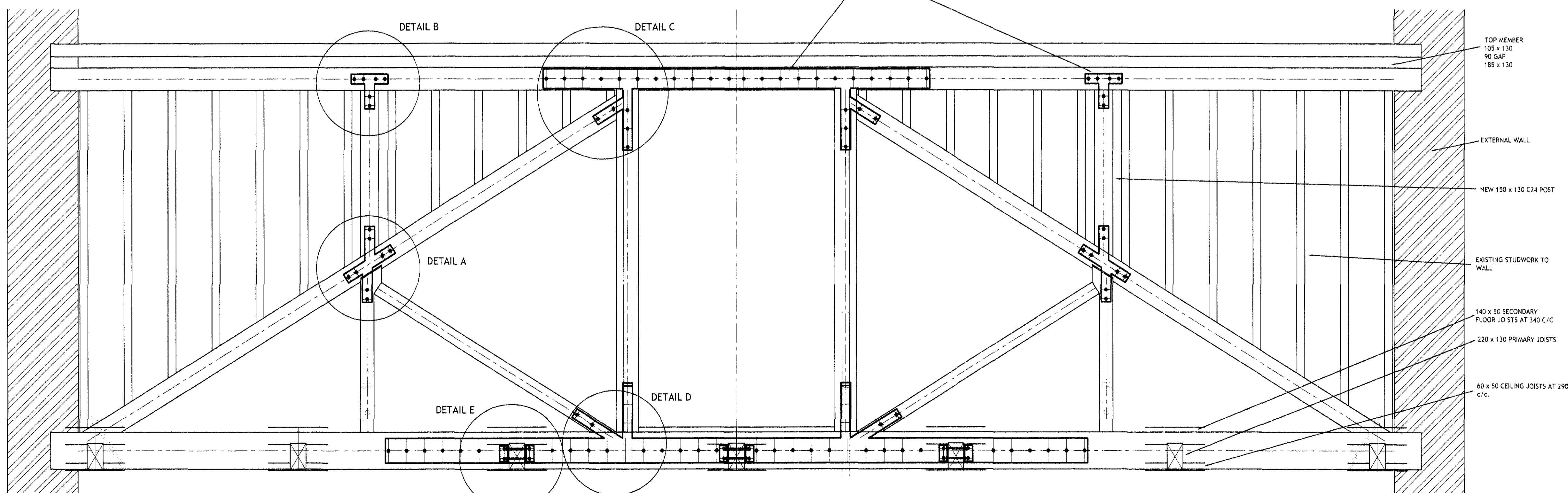


DETAIL C  
1:10



DETAIL D  
1:10

FABRICATED STEEL BRACKET TO BOTH SIDES. REFER TO DETAIL



ELEVATION ON TRUSS  
1:20

DO NOT SCALE THIS DRAWING

1. THIS DRAWING TO BE READ WITH ALL RELEVANT ARCHITECTS, ENGINEERS AND SPECIALISTS DRAWINGS.
2. ALL STRUCTURAL STEELWORK TO BE GRADE 43 TO BS 4449 UNLESS OTHERWISE STATED.
3. ALL BRICKWORK TO BE MINIMUM 21 N/MM2 IN NHL 5 MORTAR UNLESS OTHERWISE STATED.
4. ALL STEELWORK TO BE PAINTED IN ACCORDANCE WITH THE SPECIFICATION.
5. ALL SETTING OUT AND SITE DIMENSIONS TO BE THE RESPONSIBILITY OF THE CONTRACTOR.
6. DESIGN AND INSTALLATION OF TEMPORARY WORKS TO BE THE RESPONSIBILITY OF THE CONTRACTOR.
7. ALL NEW STRUCTURAL TIMBER TO BE C24 SAWN TREATED SOFTWOOD UNLESS OTHERWISE STATED.
8. ALL OAK TO BE ONE YEAR SAWN GREEN ENGLISH OAK. SECTIONS LARGER THAN 250 MM TO BE BOXED HEART. SECTIONS TO BE SELECTED AS APPROPRIATE FOR LOCATION AND TO BE FREE OF SIGNIFICANT WANE, SHAKES AND KNOTS. ALL TO BE HEARTWOOD.
9. BRACKETS FABRICATED FROM SUITABLE TEMPLATES.
10. ALL CLIENTS STAFF, CONSULTANTS, AND CONTRACTORS MUST COMPLY WITH ALL CURRENT HEALTH AND SAFETY LEGISLATION INCLUDING: CONSTRUCTION (DESIGN & MANAGEMENT) REGULATIONS 2007 HEALTH & SAFETY AT WORK ACT 1974 AND ALL OTHER RELEVANT LEGISLATION.
11. ALL WORK ELEMENTS TO BE CARRIED OUT IN ACCORDANCE WITH THE PROJECT HEALTH AND SAFETY FILE AND METHOD STATEMENTS.
12. ALL WORK ELEMENTS TO BE CARRIED OUT USING APPROPRIATE TOOLS, METHODS, MATERIALS AND TECHNIQUES.
13. HOLES IN EXISTING MASONRY TO BE DRILLED WITH NON PERCUSSIVE DIAMOND TIPPED DRILLS USING THE MINIMUM WATER POSSIBLE FOR LUBRICATION.
14. STRUCTURAL FIXINGS TO EXISTING MASONRY TO BE WITH FISCHER FIS V EPOXY MORTAR UNLESS OTHERWISE STATED.
15. ALL WORK TO SENSITIVE HISTORIC FABRIC TO BE CARRIED OUT BY SUITABLY EXPERIENCED AND SKILLED PERSONNEL.
16. NO OPENING UP BEYOND THAT INDICATED ON THE DRAWINGS TO BE CARRIED OUT WITH OUT PRIOR PERMISSION.
17. MASONRY AND MORTAR SAMPLES TO BE APPROVED BEFORE ANY WORK COMMENCES.
18. THE DRAWINGS AND DETAILS ARE PREPARED USING THE INFORMATION AVAILABLE AND MAY BE AT VARIANCE WITH HIDDEN HISTORIC FABRIC. REPORT ANY VARIATIONS OR DIFFERENCES FOUND DURING THE WORK TO THE ARCHITECT AND ENGINEER.

**Hockley & Dawson**  
Consulting Engineers  
Telephone: 01483 - 548784  
Facsimile: 01483 - 268765  
E-mail: admin@hockleyanddawson.co.uk  
Internet: www.hockleyanddawson.co.uk

Hockley & Dawson Consulting Engineers Limited  
The Great Barn  
Smithbrook Barns  
Craneleigh  
Surrey  
GU6 8LH

Project: **KENWOOD HOUSE SERVICE WING**

English Heritage  
drawing title: **FLAT 4 TRUSS STRENGTHENING**

PRELIMINARY

date: August 2011 scale: As stated  
job no.: 16554 drg. no.: 1 06