

**PLANNING PHOTOGRAPHS**

**FOR**

**BYRON COURT, 50 FAIRFAX ROAD, LONDON**

**CAR PARK RAISE ARM BARRIER**

AR/Bldg  
28 September 2011

  
cyril leonard  
*75th Anniversary*

**Cyril Leonard** Chartered Surveyors  
22 Gilbert Street, Grosvenor Square  
London W1K 5EJ United Kingdom

Telephone +44 (0) 20 7408 2222  
Facsimile +44 (0) 20 7493 2482  
email@cyrilleonard.co.uk



Photograph of the car park entrance of Byron Court, 50 Fairfax Road, London.





Photograph illustrating the car park entrance taken from the pavement on the right hand side. The distance from the car park entrance to the edge of the keep clear sign is 5 meters.

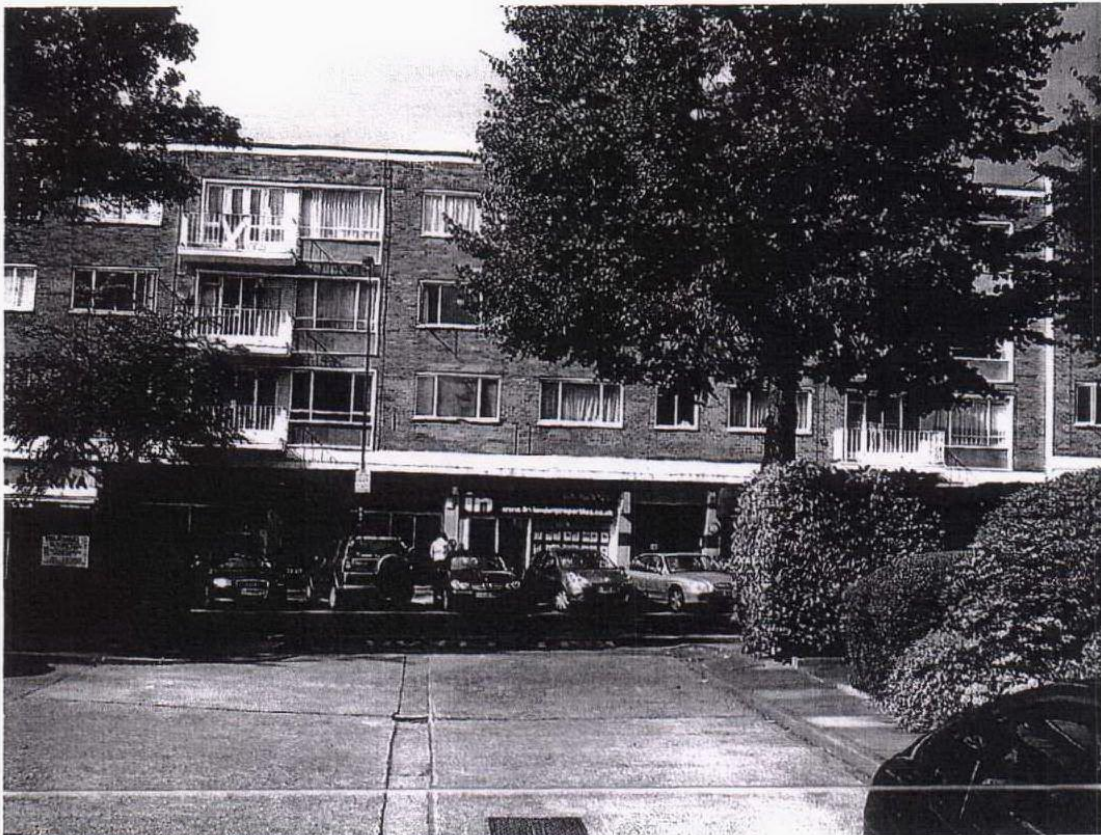


Photograph illustrating the car park entrance taken from the left hand side on Fairfax Road.





Photograph illustrating the car park entrance taken from the car park looking out onto Fairfax Road.



Photograph illustrating the car park entrance taken from the car park looking out onto Fairfax Road.





Photograph of a sign in the car park illustrating the current method of deterring unauthorised vehicles from parking.