

Planting Specification

Plant List;
Sedum 'Purple Emporer'
Euphorbia myrsinites
Stipa tenuissima
Dryopteris affinis 'Crispa Gracilis'
Sempervivum calcareum
Rosmarinus prostratus
Thymus
Lactuca
Iris confusa
Olea europea
Hedera
Planted at a density of 25 plugs per square metre

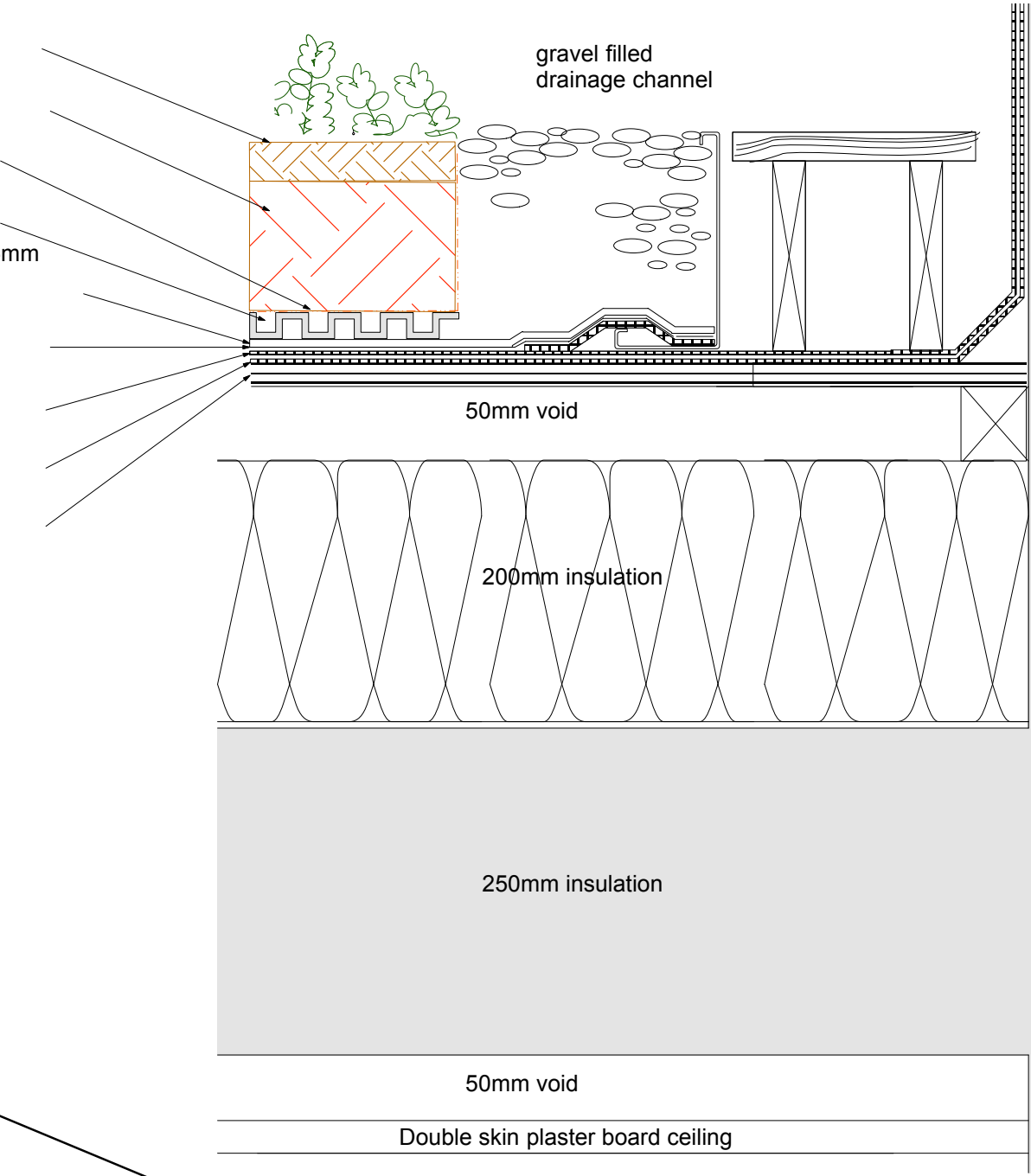
Insects attracted;
Lepidoptera, large order of insects that includes moths and butterflies encompassing moths and the three superfamilies of butterflies, skipper butterflies, and moth-butterflies. Including also Spurge Hawk-moths and Giant Leopard Moth. Stipa are found in grasslands and support a vast variety of small mammals, reptiles, birds, and insects. Native bees.

Drought tolerant;
The green roof plants chosen are drought tolerant once established and survive well in full sun

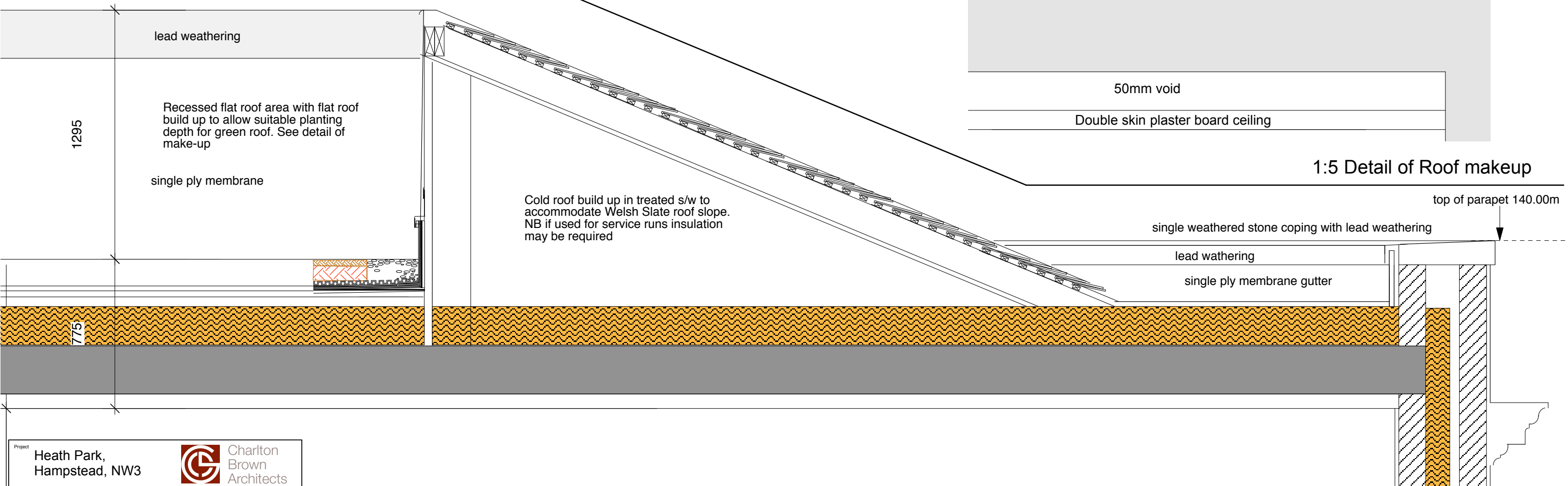
Maintenance;
Bi-annual inspection and weeding replanting any redundant specimens.
After 2 seasons flora should be self maintaining requiring annual inspection only

Planting to be provided, installed and maintained by The Botanical Gardener, 14a Salvin Road, London, SW15 1DR

- Bauder wild floor blanket 30mm
- Bauder extensive substrate 100mm
- Bauder filter fleece
- Bauder DSE20 board 20mm
- Bauder FSM600 protection fleece 6mm
- Bauder PE foil as slip layer
- Bauder capping sheet 5mm
- Bauder G4E underlayer 4mm
- Structural deck




1:5 Detail of Roof makeup



1:20 Detail of Roof makeup

Project

Heath Park,
Hampstead, NW3



Charlton
Brown
Architects

Title

Proposed Roof Details

Number

1017/RoC/Roof/02

Date

12.08.11

Scale

1:5 & 1:20 @ A2

Revisions