

Restaurant Extract

The extraction from the restaurant will comply with all noise and vibration requirements :

Fan Date

Manufacturer: Helios

Model: GBD560 /4 / 1

Dimensions: 800 x 800 x 800mm overall

720 x 720mm inside frame

Motor Rating: 2.5 kW

Supply: 380-420/50/3 phase

Full Load Current: 4.8 amps

Breakout Noise: 45 dB(A) at 4m

Air Performance: 3.05 m³/s @ 200 Pa

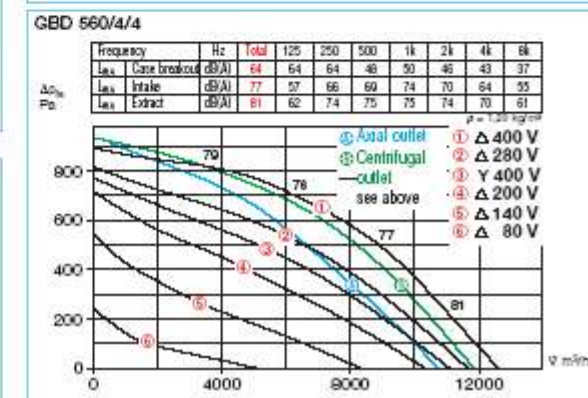
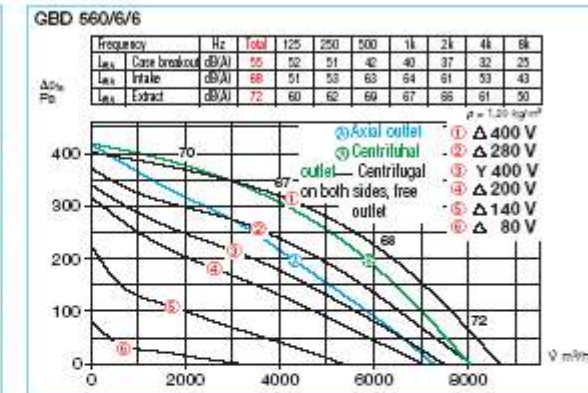
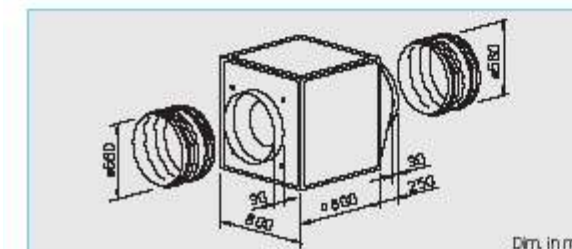
2.2 m³/s @ 600 Pa

Speed Controller: TSD 5.5



Extract repositioned to rise adjacent to the new stairwell.

560 mm ø GigaBox centrifugal fan



■ Specification

■ Casing

Self-supporting frame construction made from aluminium hollow section. Double skinned, 20 mm strong side panel made from galvanised steel plate, soundproof and heat insulated through coating with non flammable mineral wool. Intake with mouth for ideal inlets as well as connectors and flexible sleeve for installation to ducts. Extract with spigot (from rectangular to circular) for low-loss escape and flexible sleeve for prevention of impact sound transfer. Simple positioning through load hooks as standard.

■ Impeller

Free-wheeling centrifugal high performance impeller with backwards curved polymer blades made from galvanised steel plate, direct powering. Energy-efficient at low noise development. It is dynamical together with the motor to DIN ISO 1940 T.1 – quality grade 2.5.

■ Motor

Maintenance-free external motor in protection to IP 54. Thermal overload protection through built-in thermo contacts. Ball bearings and radio interference-free.

■ Electrical connection

Terminal box on the motor as standard, protection to IP 54.

■ Motor protection

Motors have thermal contacts wired to the terminal block and must be connected to a motor protection unit.

■ Speed control

All models are speed controllable using voltage reduction with transformer controller. The 3 ph.-models can operate on two speed controllers through Y/Δ wiring (accessories to DS 2 or full motor protection unit M4). The voltage steps are given in the performance curve.

■ Mounting

Mounting position in any position and flexible installation through five possible discharge directions of the spigot. For wall mounting the wall bracket has to be used (accessory). It is possible to set up an outlet water repellent roof and grille (accessory).

■ Sound levels

Above the performance curves the sound power levels are given in total and spectrum for:
- sound level case breakout
- sound level intake
- sound level extract
Within the performance curve the sound power level (on intake) is given for the transformer speed steps. In the table below there is also to find:
- case breakout level at 4 m (free-field conditions).

■ Accessory

Wall bracket for wall mounting.
GB-WK 560 Ref.No. 5626

Water repellent extract grille.
GB-WSG 560 Ref.No. 5640

Water repellent roof outlet.
GB-WSD 560 Ref.No. 5749

Condensate tray with spigot for duct/ hose connection.
GB-KW 560 Ref.No. 5645

Reversing and on/off switch for double-rotating Y/Δ-switchable 3 Phase fans.

Type DS 2 ² Ref.No. 1351

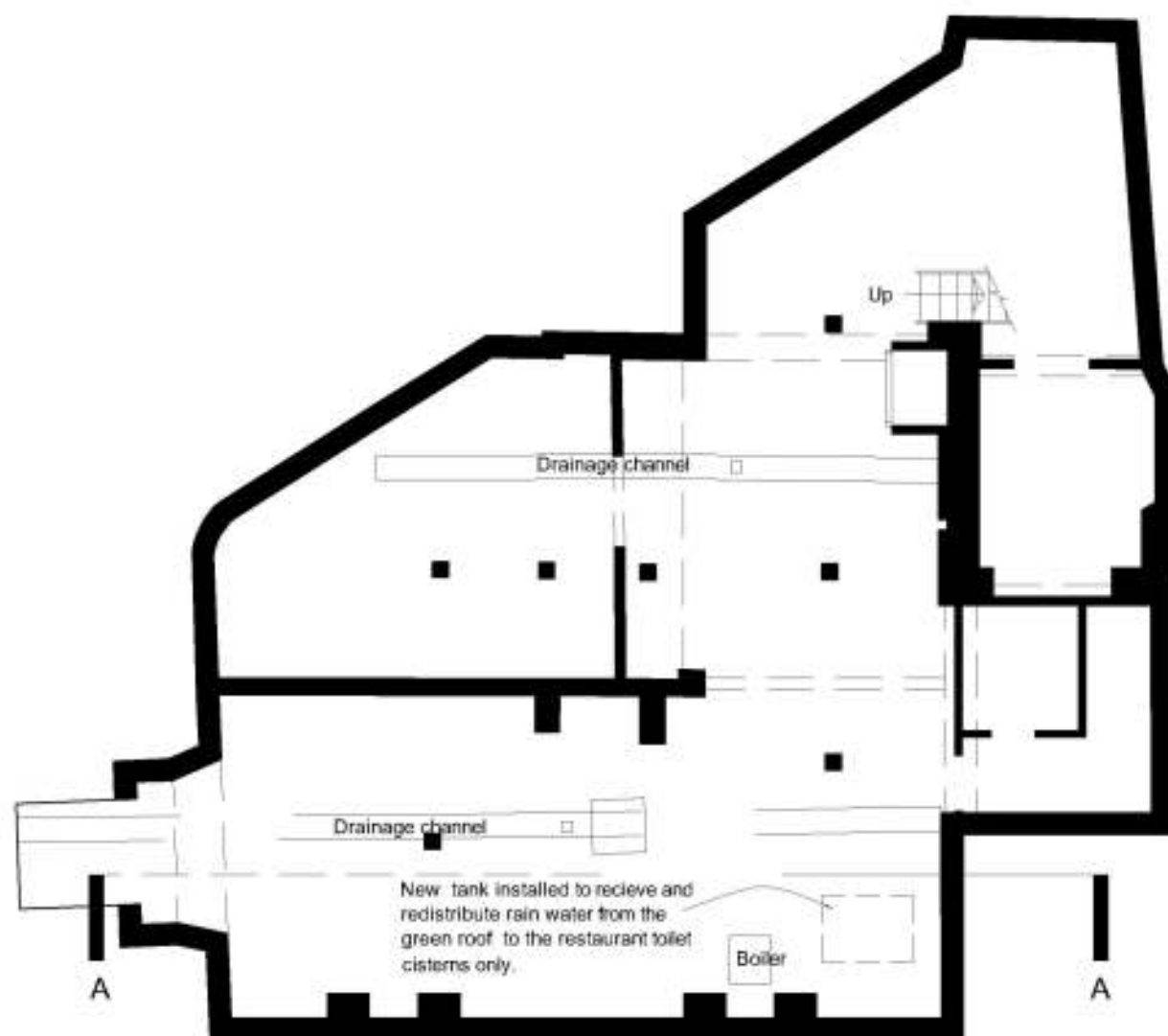
Type	Ref.No.	Air flow volume (FD)	A.P.M.	Sound press. level case breakout	Motor power rating	Current full load	Speed controlled	Wiring diagram	Maximum air flow temperature full load controlled	Nominal weight (net)	5 step transformer controller with motor protect. unit	Full motor protection unit using the thermal contacts
		m ³ /h	min ⁻¹	dB(A) at 4m	kW	A	A	No.	+°C	+°C	Type Ref.No.	Type Ref.No.
2 speed motor, 3 Phase motor, 3-, 400 V, 50 Hz, VΔ-motor, protection to IP 54												
GBD 560/6/6	5522	7800/8540	690/670	35	0,51/0,80	0,90/1,90	1,90	867	60	60	RDS 4 1316	TSD 3,0 1502 M4 ¹⁾ 1571
GBD 560/4/4	5521	11500/12590	1110/1350	44	1,70/2,50	2,80/4,80	4,90	867	55	45	RDS 7 1578	TSD 7,0 1504 M4 ¹⁾ 1571

¹⁾ incl. operation and reversing switch

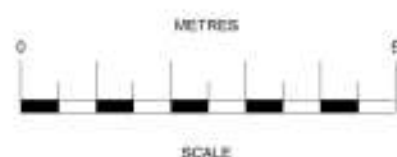
²⁾ required full motor protection unit: model MD, No. 5649

Schedule of Accommodation

Accomm. Schedule Option 2		Bed.1 area (m.sq)	Bed.2 area (m.sq)	Bed.3 area (m.sq)	Flat area (m.sq)
Flat 1	3B x 5P	9.30	15.56	11.50	98.10
Flat 2	2B x 3P	10.15	8.60	n/a	60.40
Flat 3	2B x 4P	13.62	10.15	n/a	73.00



BASEMENT FLOOR PLAN 1:50



Rev. F 25.08.11 - Cycle parking revised in line with national rules and existing law shown.

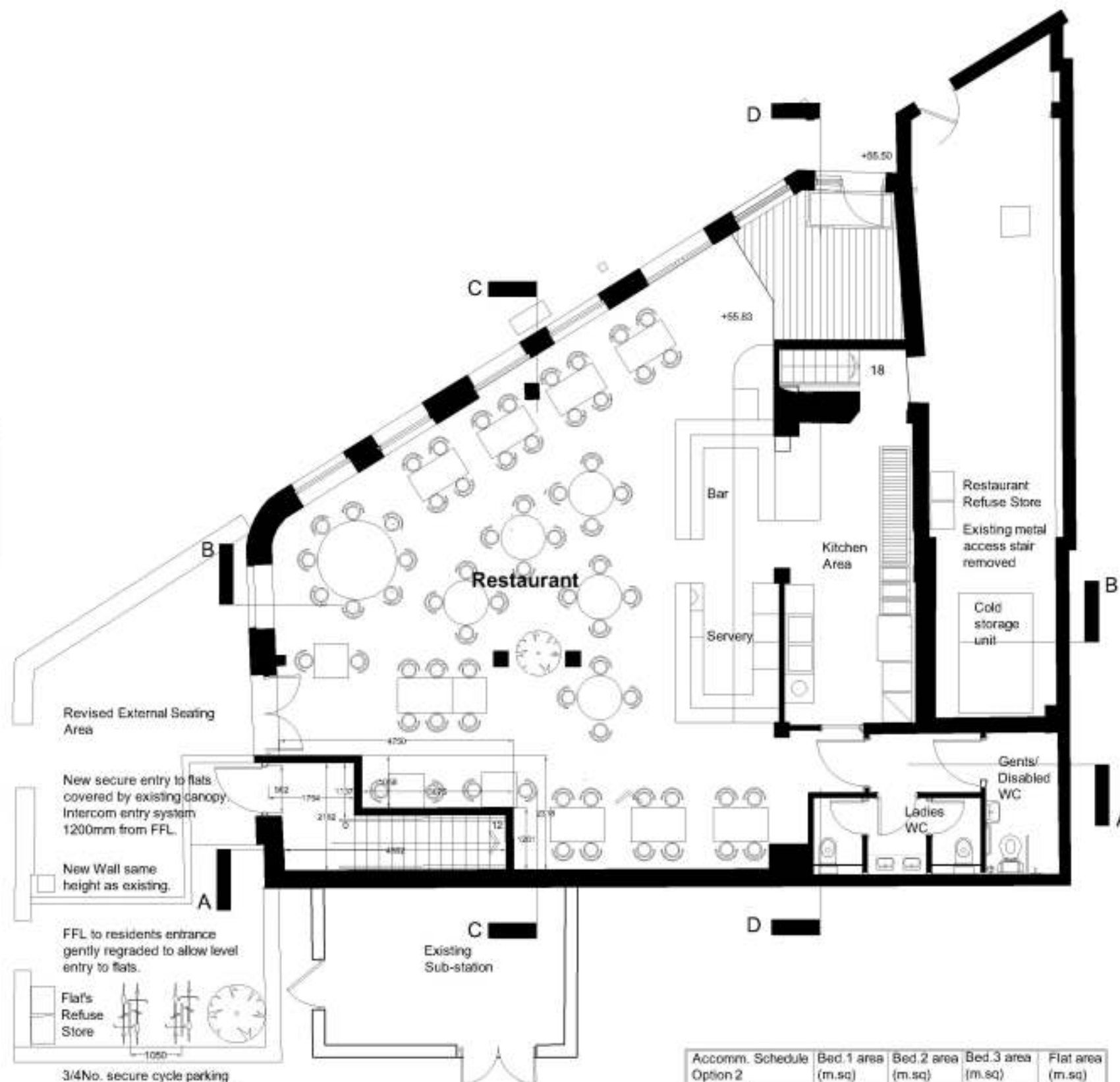
Rev. E 15.07.11 - Entrance to flats and upper floor entrance moved. Flats redesigned & schedule revised.

Rev. D 29.03.11 - Coloured upper floor entrance removed. Flat schedule revised. Section D-D added.

Rev. C 14.07.10 - Entrance to new flats amended to allow level access to comply with Lifetime Homes.

Rev. B 20.04.10 - Entrance to new flats and cycle parking amended to comply with planning officer advice.

Rev. A 20.11.09 - Basement plan edited 1:100 plans removed and bug fix added.



GROUND FLOOR PLAN 1:50

Accomm. Option 2	Schedule	Bed.1 area (m.sq)	Bed.2 area (m.sq)	Bed.3 area (m.sq)	Flat area (m.sq)
Flat 1	3B x 5P	9.30	15.56	11.50	98.10
Flat 2	2B x 3P	10.15	8.60	n/a	60.40
Flat 3	2B x 4P	13.62	10.15	n/a	73.00



2nd Floor East,
98 White Lion Street,
Islington,
London N1 9PF

report:
**Extension to the
Carob Tree Restaurant
Highgate,
Camden**

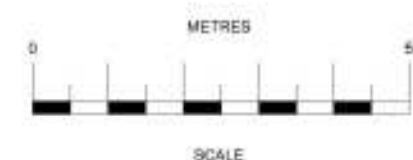
title:
**Proposed Basement and
Ground Floor Plans**

Scale:
1:50 (@A1)
Drawn By:
S.G.D
Drawing No.
SA/PL/101/06

Date:
Sept. 11'
Checked:
D.U.
Revision:
F



FIRST FLOOR PLAN



Rev. F: 25.09.11 - 2nd floor extension to service yard removed. All layouts revised.

Rev. E: 19.07.11 - Extension to 1st and upper floor staircase moved. Plans redesigned & schedule revised.

Rev. D: 05.02.11 - Central upper floor staircase removed. Flat layouts and schedule revised. Section D-D added.

Rev. C: 16.07.10 - Entrance door and shower revised to better demonstrate future scheme completion.

Rev. B: 23.04.10 - All plans revised to comply with planning & floor requirements.

Rev. A: 23.11.09 - 1st floor created with new shop front. Main toilet removed.

Sceptre
Associates Ltd.

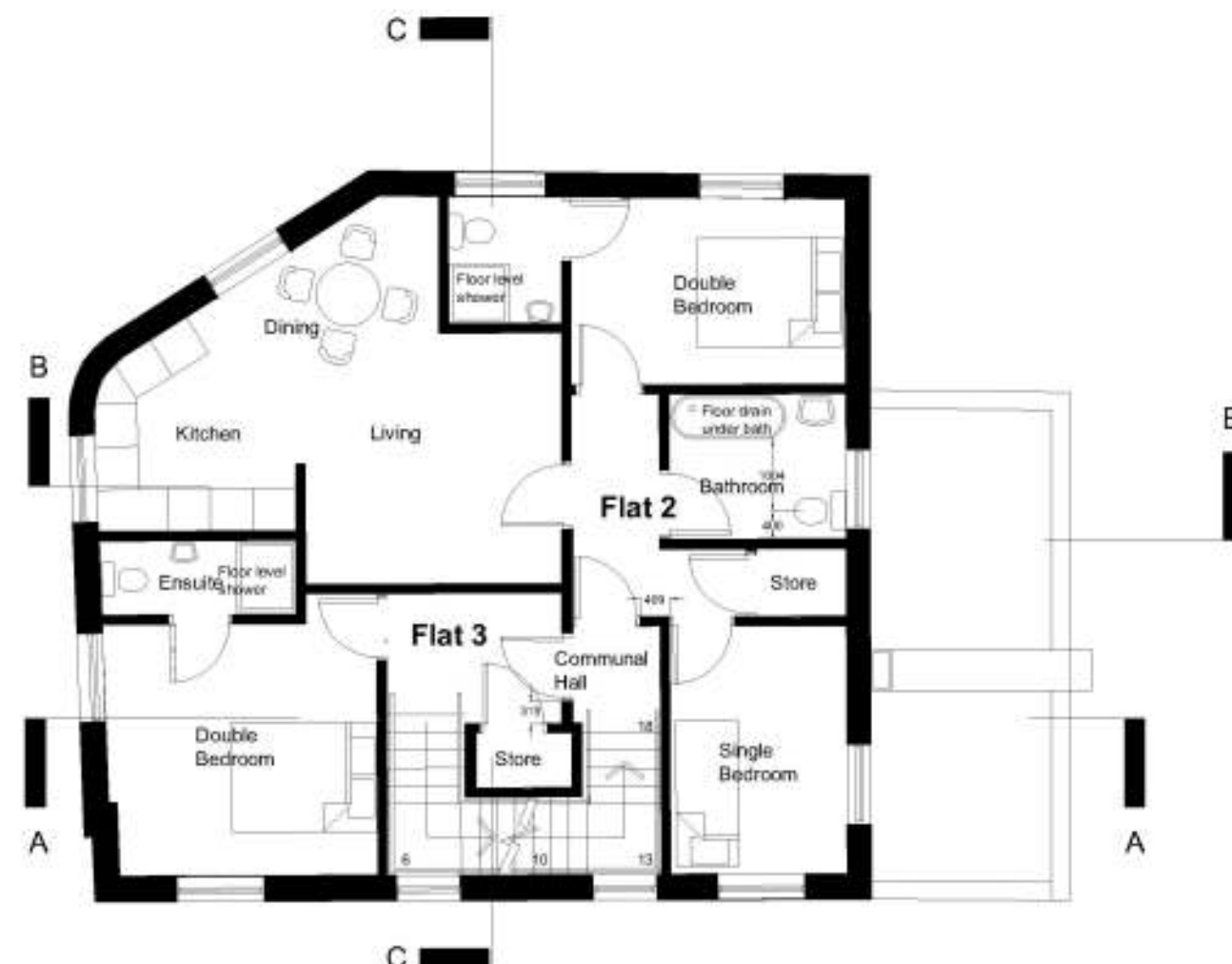
2nd Floor East,
98 White Lion Street,
Islington,
London N1 9PF

project:
**Extension to the
Carob Tree Restaurant
Highgate,
Camden**

title:
**Proposed First and Second
Floor Plans.**

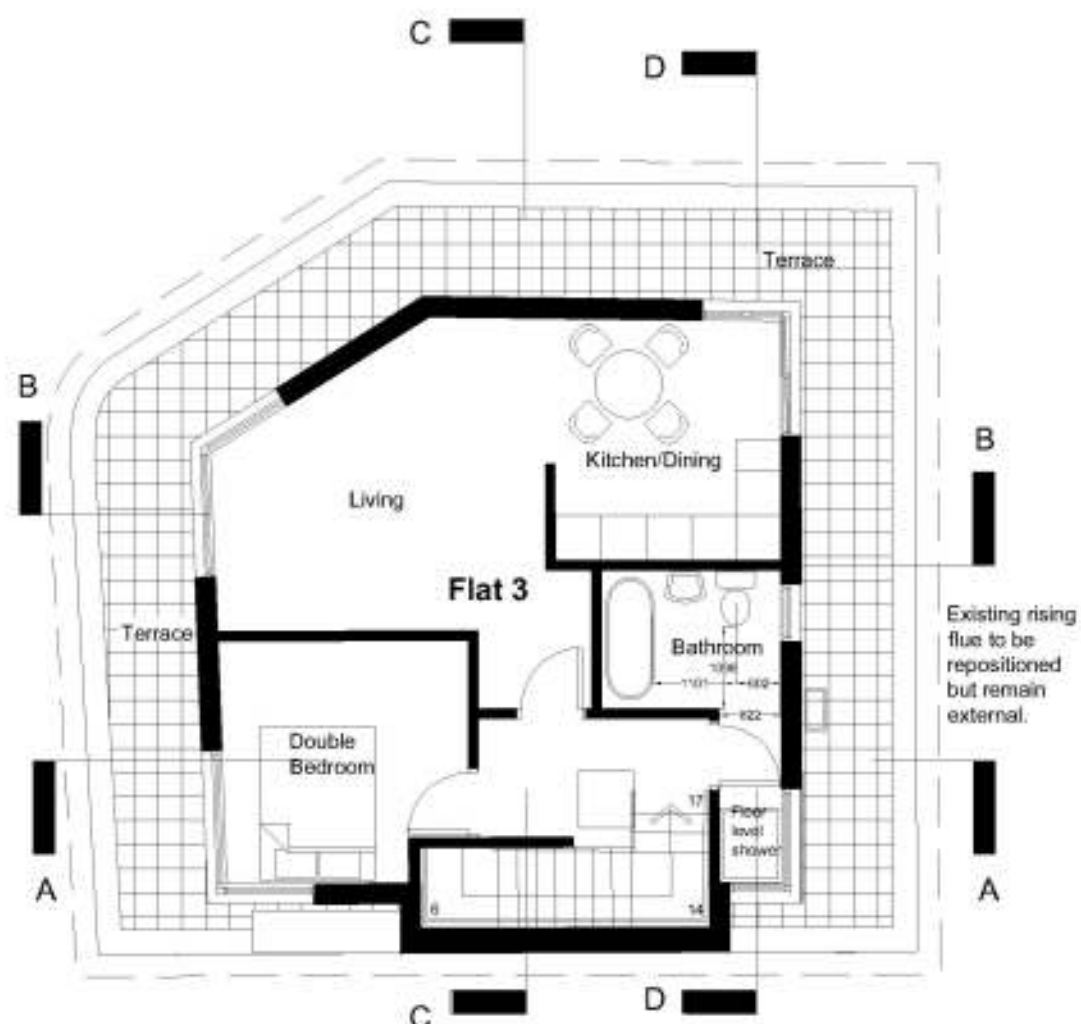
scale:
1:50 (@A1)
Drawn By:
S.G.D
Drawing No:
SA/PL/101/07

Date:
SEPT. 11'
Checked:
D.U.
Revision:
F

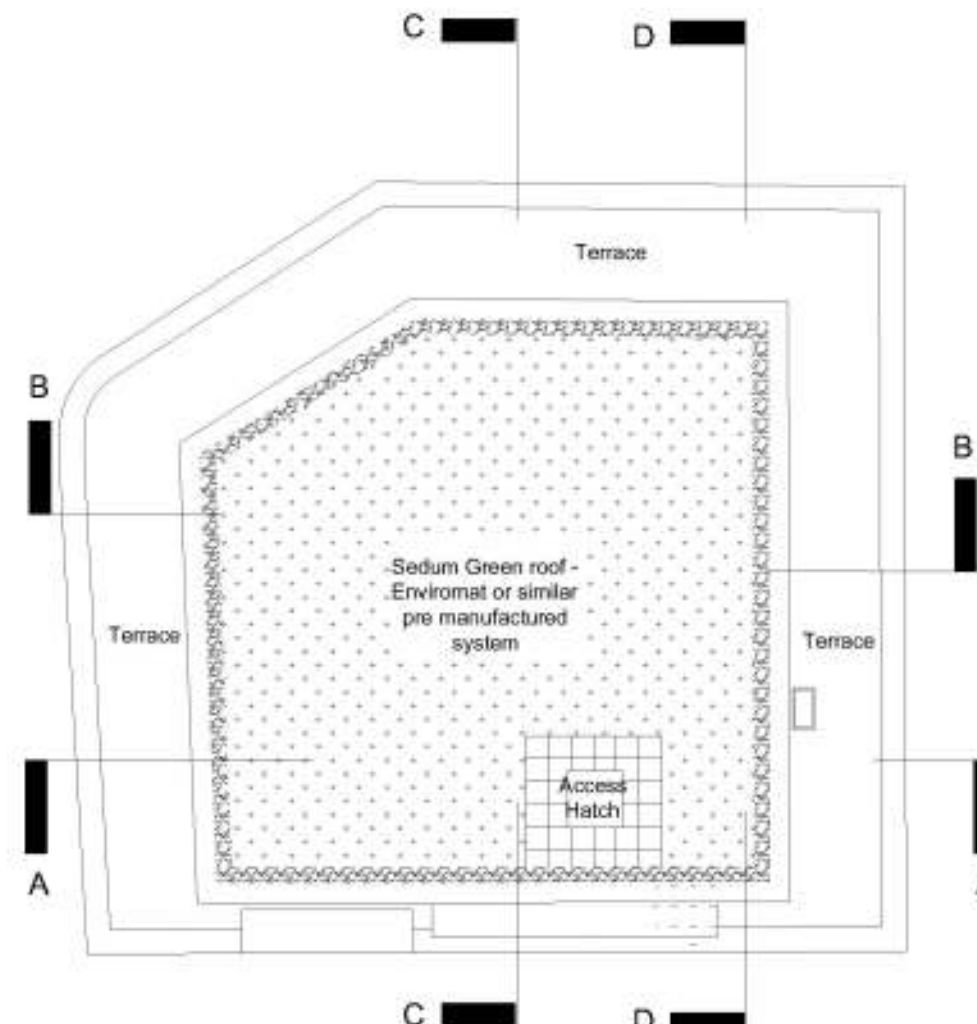


SECOND FLOOR PLAN

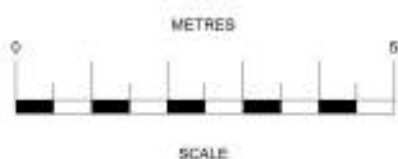
Accomm. Option 2	Schedule	Bed.1 area (m.sq)	Bed.2 area (m.sq)	Bed.3 area (m.sq)	Flat area (m.sq)
Flat 1	3B x 5P	9.30	15.56	11.50	98.10
Flat 2	2B x 3P	10.15	8.60	n/a	60.40
Flat 3	2B x 4P	13.62	10.15	n/a	73.00



THIRD FLOOR PLAN



ROOF PLAN



Rev. F - 25.05.11 - Extension to service yard removed and built plant area.
 Rev. E - 10.07.11 - Extension to flat and upper flat staircase moved. Flat redesigned & schedule revised.
 Rev. D - 03.08.11 - Extension upper flat staircase removed. Flat redesign and schedule revised. Section D-D added.
 Rev. C - 14.07.12 - Entrance Door and shower altered to show closer compliance with fire alarm.
 Rev. B - 20.04.10 - All drawings revised to comply with planning officers requirements.
 Rev. A - 23.11.09 - 1:50 plans created with new plug in.

Sceptre
 Associates Ltd.

2nd Floor East,
 98 White Lion Street,
 Islington,
 London N1 9PF

Project
**Extension to the
 Carob Tree Restaurant
 Highgate,
 Camden**

Title
**Proposed Third and Roof
 Floor Plans.**

Scale
1:50 (@A1)
 Drawn By
S.G.D
 Drawing No.
SA/PL/101/08

Date
SEPT 11'
 Checked
D.U.
 Revision
F

Accomm.	Schedule	Bed.1 area (m.sq)	Bed.2 area (m.sq)	Bed.3 area (m.sq)	Flat area (m.sq)
Option 2					
Flat 1	3B x 5P	9.30	15.56	11.50	98.10
Flat 2	2B x 3P	10.15	8.60	n/a	60.40
Flat 3	2B x 4P	13.62	10.15	n/a	73.00