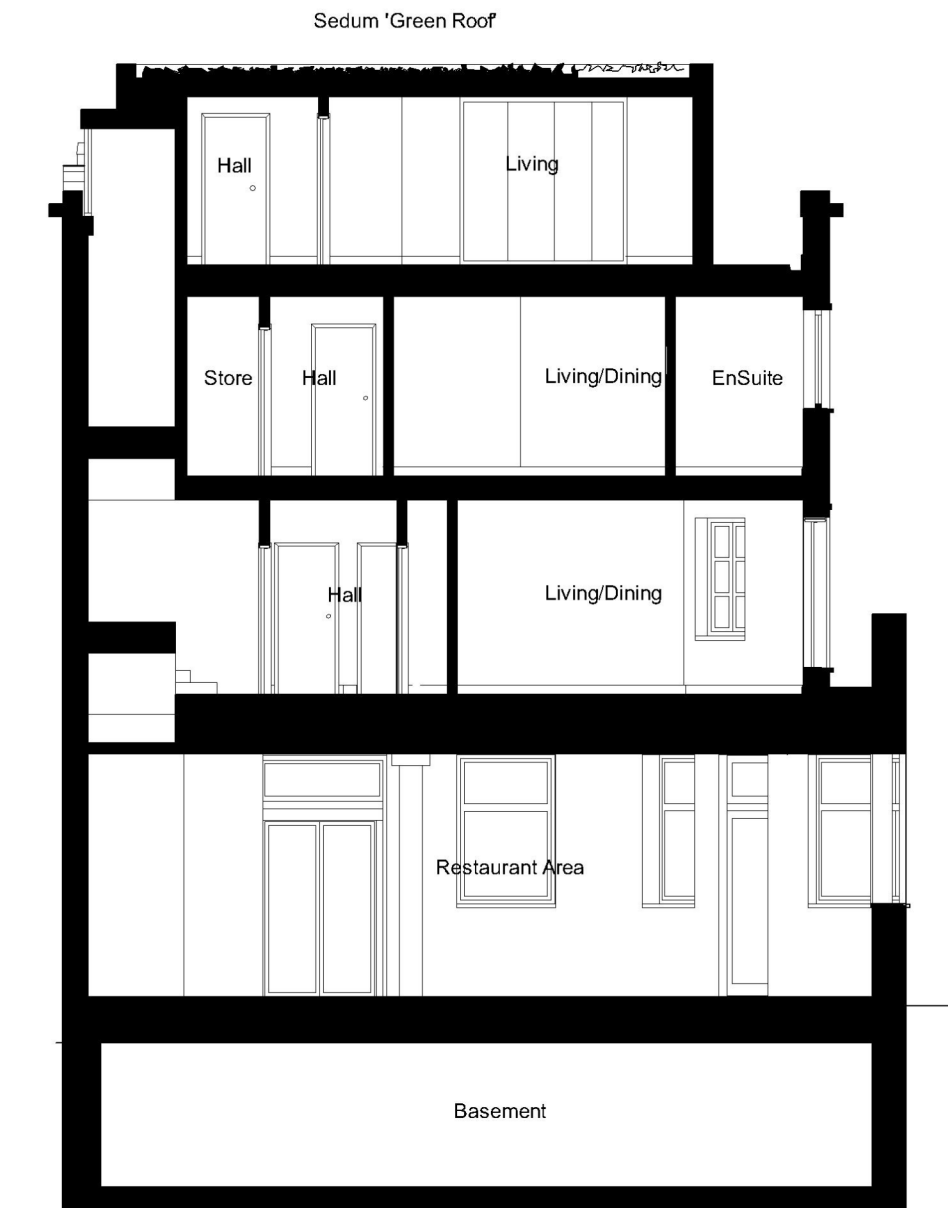
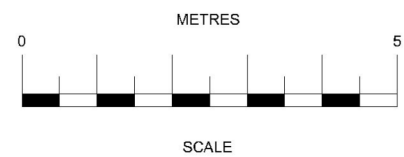


SECTION B-B



SECTION C-C

Rev. D 25.09.11 - Sections revised in line with changes to the upper floor plans.
Rev. C 16.07.11 - Entrance to flats and upper floor staircase moved. Flats redesigned & schedule revised.
Rev. B 14.07.10 - Sections revised to match existing, basements shown.
Rev. A - 23.04.10 - All drawings revised to comply with planning officers spatial and design comments.



2nd Floor East,
98 White Lion Street,
Islington,
London N1 9PF

**Extension to the
Carob Tree Restaurant
Highgate,
Camden**

**Proposed Longitudinal
Section B-B and
Latitudinal Section C-C**

Scale:	1:50 (@A1)	Date:	SEPT 11'
Drawn By:	S.G.D	Checked:	D.U.
Drawing No.	SA/PL/101/14	Revision	D