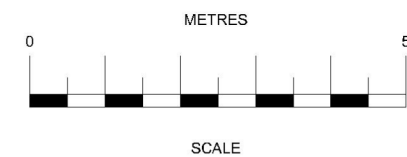
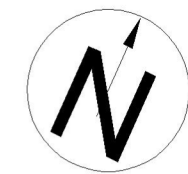


FIRST FLOOR PLAN



Rev. F 25.09.11 - 2nd floor extension to service yard removed, flat layouts revised.  
Rev. E 16.07.11 - Entrance to flats and upper floor staircase moved. Flats redesigned & schedule revised.  
Rev. D 20.02.11 - External upper floor staircase removed. Flat layouts and schedule revised. Section D-D added.  
Rev. C - 14.07.10 - Entrance doors and showers revised to better demonstrate lifetime homes compliance.  
Rev. B - 23.04.10 - All plans revised to comply with planning officer requirements.  
Rev. A - 23.11.09 - 1:50 plans created with new dwg. no. Male toilet revised.



2nd Floor East,  
98 White Lion Street,  
Islington,  
London N1 9PF

project:

**Extension to the  
Carob Tree Restaurant  
Highgate,  
Camden**

Title:

**Proposed First and Second  
Floor Plans.**

Scale:

**1:50 (@A1)**

Drawn By:

**S.G.D**

Drawing No.

**SA/PL/101/07**

Date:

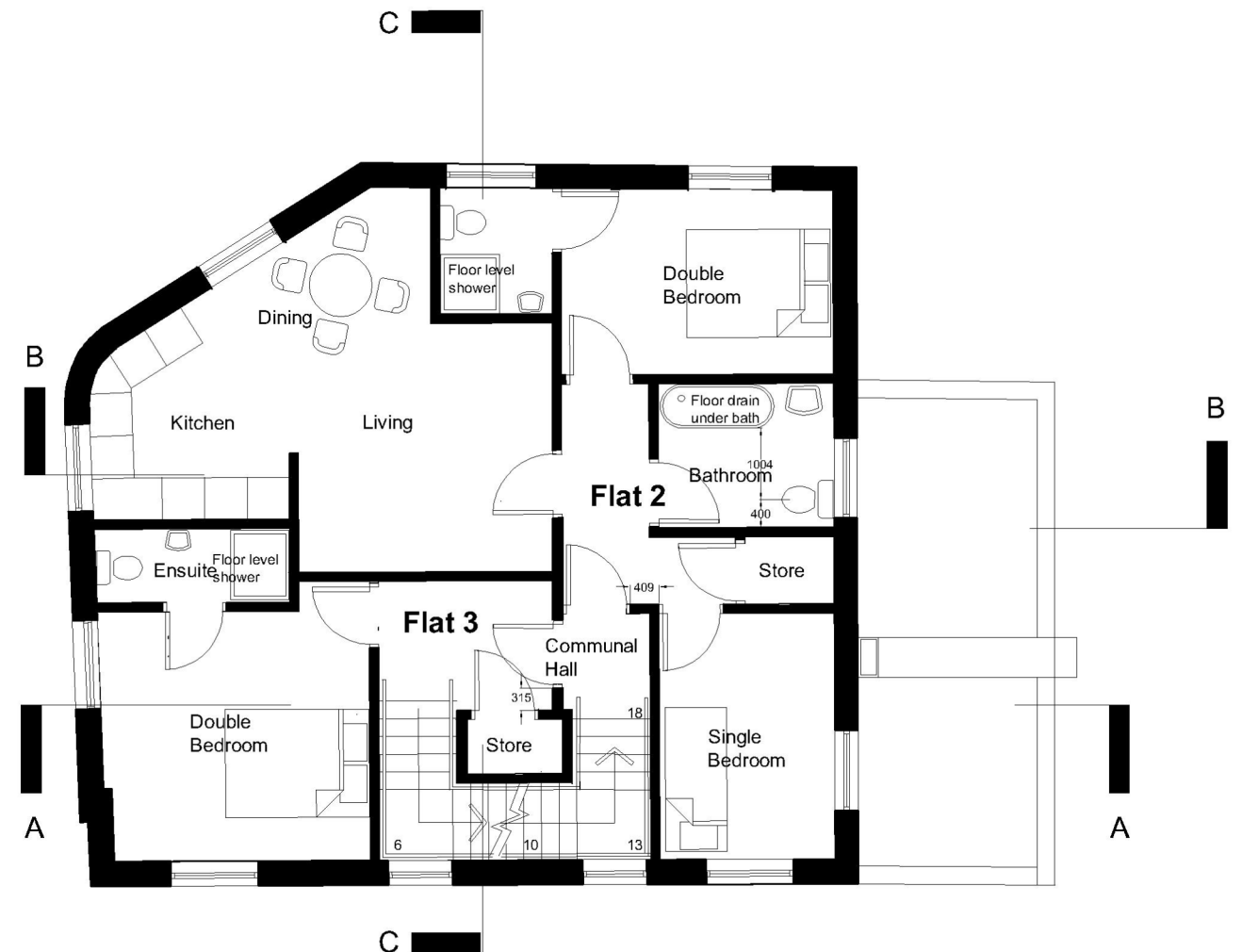
**SEPT. 11'**

Checked:

**D.U.**

Revision

**F**



SECOND FLOOR PLAN

Accomm. Option 2	Schedule	Bed.1 area (m.sq)	Bed.2 area (m.sq)	Bed.3 area (m.sq)	Flat area (m.sq)
Flat 1	3B x 5P	9.30	15.56	11.50	98.10
Flat 2	2B x 3P	10.15	8.60	n/a	60.40
Flat 3	2B x 4P	13.62	10.15	n/a	73.00