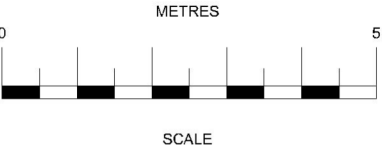
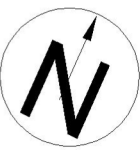
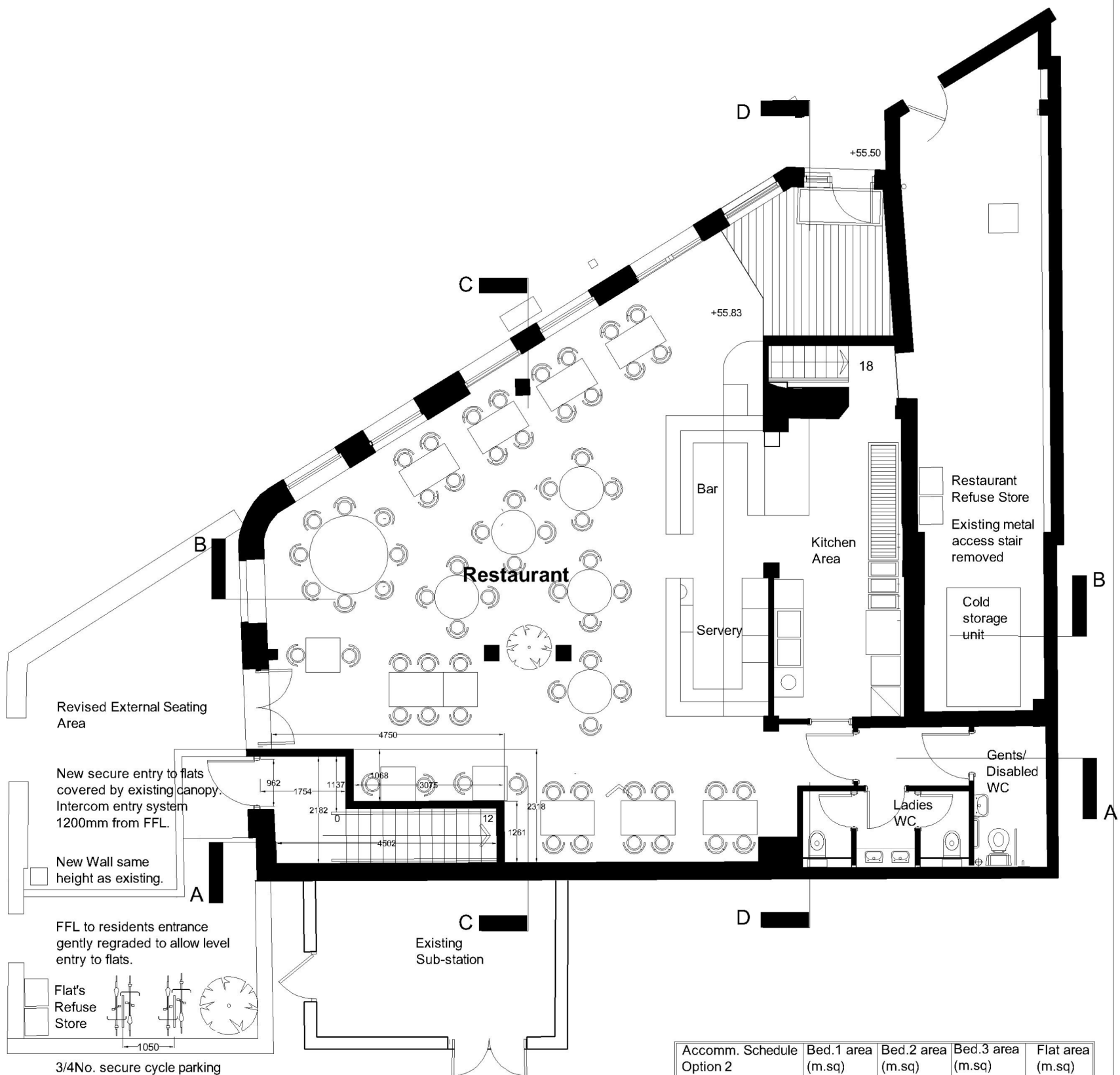


BASEMENT FLOOR PLAN 1:50



Rev. F 25.09.11 - Cycle parking revised in line with reduced units and existing tree shown.
Rev. E 16.07.11 - Entrance to flats and upper floor staircase moved. Flats redesigned & schedule revised.
Rev. D 20.02.11 - External upper floor staircase removed. Flat schedule revised. Section D-D added.
Rev. C 14.07.10 - Entrance to new flats amended to show level access to comply with Lifetime homes.
Rev. B 23.04.10 - Entrance to new flats and cycle parking amended to comply with planning officer advice.
Rev. A 23.11.09 - Basement plan added, 1:100 plans removed and dwg. no altered.



GROUND FLOOR PLAN 1:50

Accomm. Schedule Option 2		Bed.1 area (m.sq)	Bed.2 area (m.sq)	Bed.3 area (m.sq)	Flat area (m.sq)
Flat 1	3B x 5P	9.30	15.56	11.50	98.10
Flat 2	2B x 3P	10.15	8.60	n/a	60.40
Flat 3	2B x 4P	13.62	10.15	n/a	73.00



2nd Floor East,
98 White Lion Street,
Islington,
London N1 9PF

Extension to the
Carob Tree Restaurant
Highgate,
Camden

Proposed Basement and
Ground Floor Plans

Scale: 1:50 (@A1)	Date: Sept. 11'
Drawn By: S.G.D	Checked: D.U.
Drawing No. SA/PL/101/06	Revision F