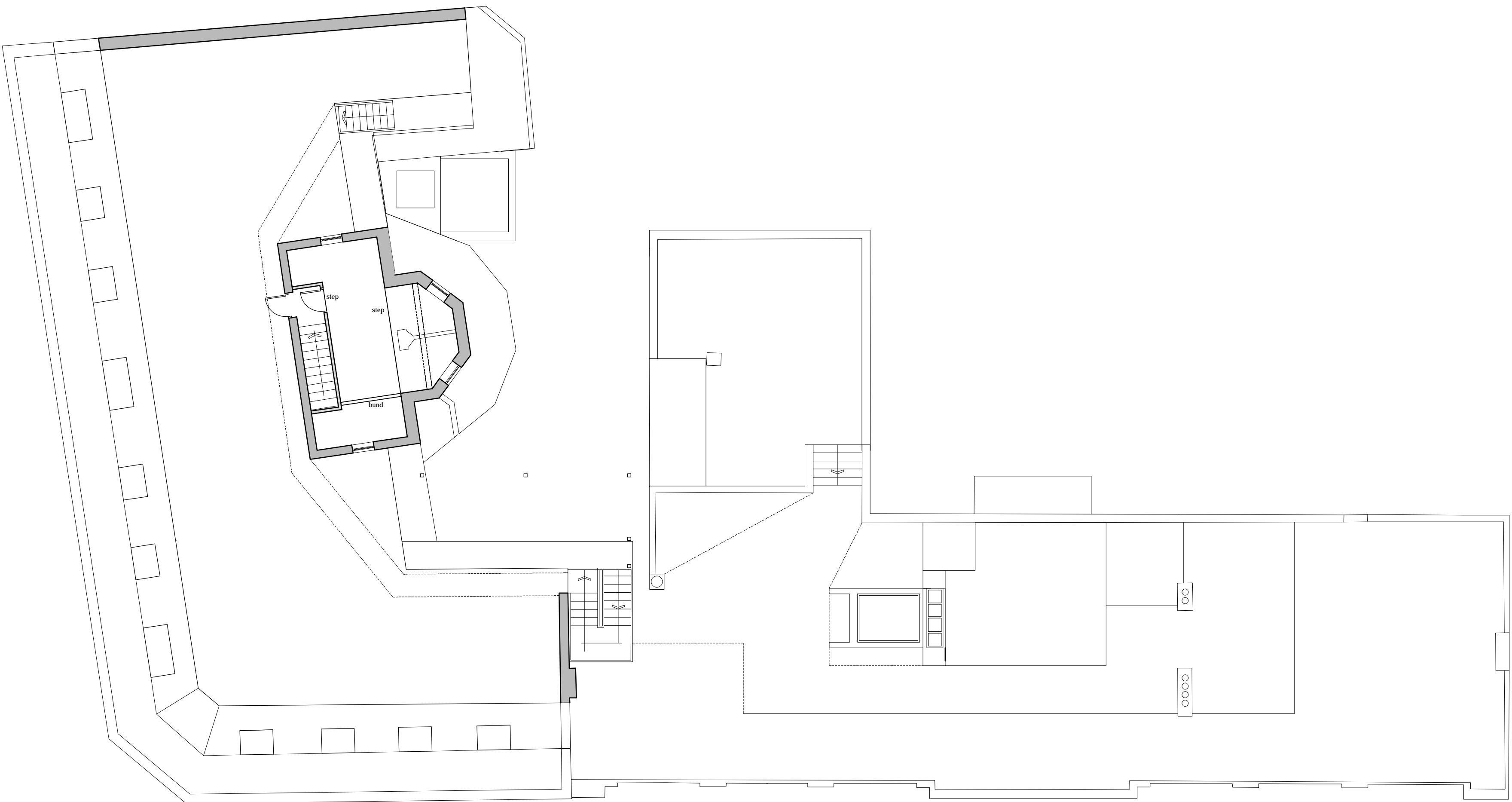


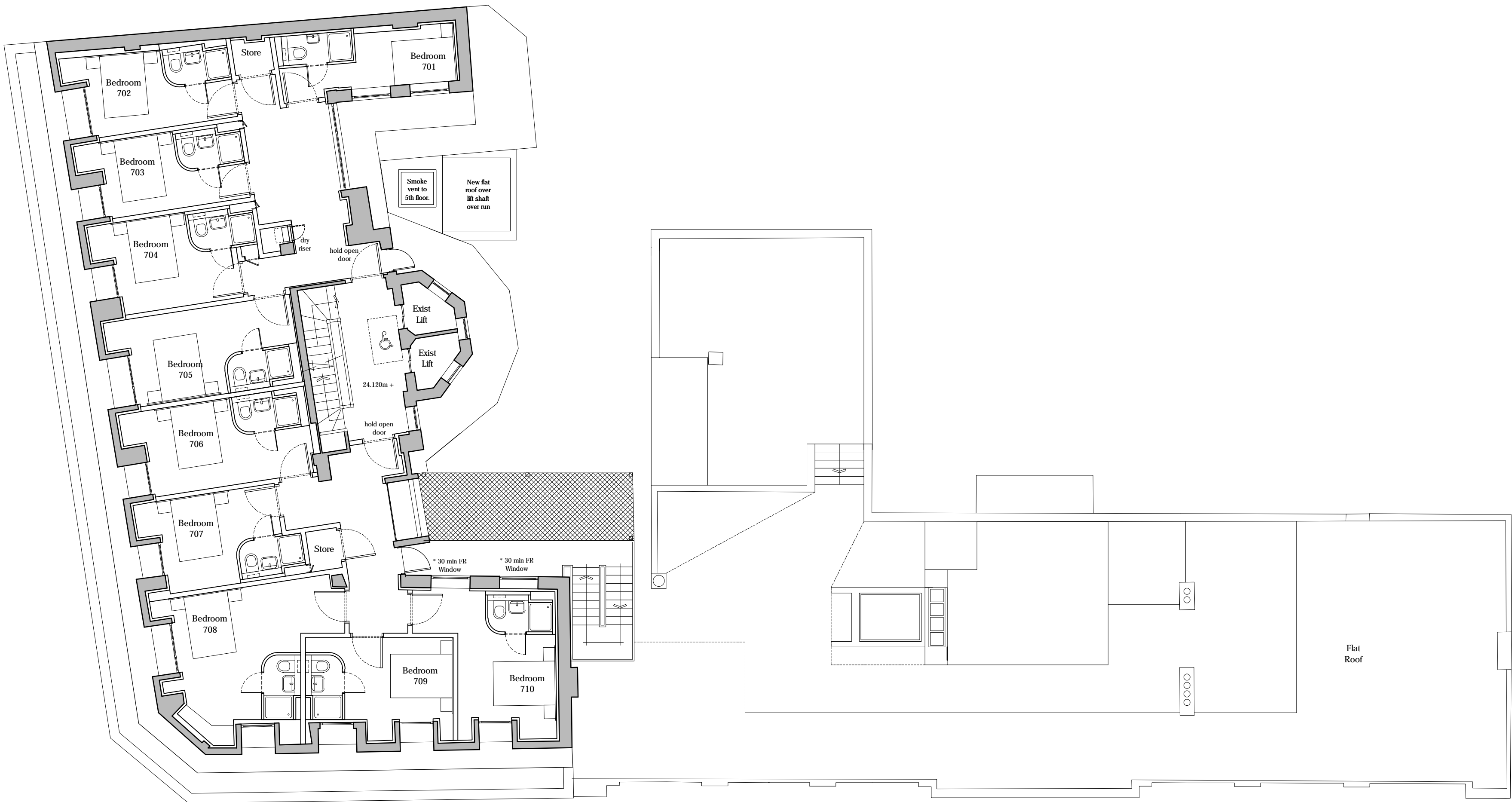
Denotes Fully Accessible Room

Denotes Ambulant Accessible Room

Fully Accessible Bedrooms: 6no.
Ambulant Accessible Bedrooms: 14no.
Total Ambulant & Fully Accessible: 20no.
Total Bedrooms: 200no.



Roof Plan



Seventh Floor Plan

10 Bedrooms



Ica Architects
2 Orbital Court, Peel Park, East Kilbride, G74 5PH
Tel +44(0)1355 578 070 Fax +44(0)1355 574 992
www.icaarchitects.com

ica architects ltd
registered in scotland company no 267727

project title:

Tune Hotels
Swinton House, Grays Inn Road
London

drawing title:

Seventh Floor and Roof Plan
Plans as Proposed

issue stage:

Planning

date: Aug 2011 drawn: CAD scale @ A1: 1:100

drawing number: revision:

363/PL305