

# 00. INDEX

Drawing Number	Drawing Title	Description
E00013/00	Index	Index of Drawings.
E00013/01	Location Plan	Scale 1:1250 at A4.
E00013/02	Block Plan	Photo of Site from above.
E00013/03	Roof Plan	Drawing of block from above, showing equipment positions.
E00013/04	Roof Elevation	Description and location of the antenna and dishes + mounting
E00013/05	S. West Elevation 1	Description of cable routes, colour and loom sizes per flats at entry points for each drops
E00013/06	S. West Elevation 2	Description of cable routes, colour and loom sizes per flats at entry points for each drops
E00013/07	Remote Cabinet Location	Description of the Sub-cabinet to be used + measurements
E00013/08	Link Cable Route	Proposed route of the link cable to be use to power the remote cabinet
E00013/09	Existing Equipments	View and location of existing equipment on site
E00013/10	Antenna, Dish Sizes & Typical Mounting Heights	Antenna and Dishes description, mounting, position, height and measurements.

Form No. SCC 013 SCC International – 1 Fieldings Road, Cheshunt, Herts, EN8 9TL, . Tel: 01992 642255. Website: www.scci.co.uk



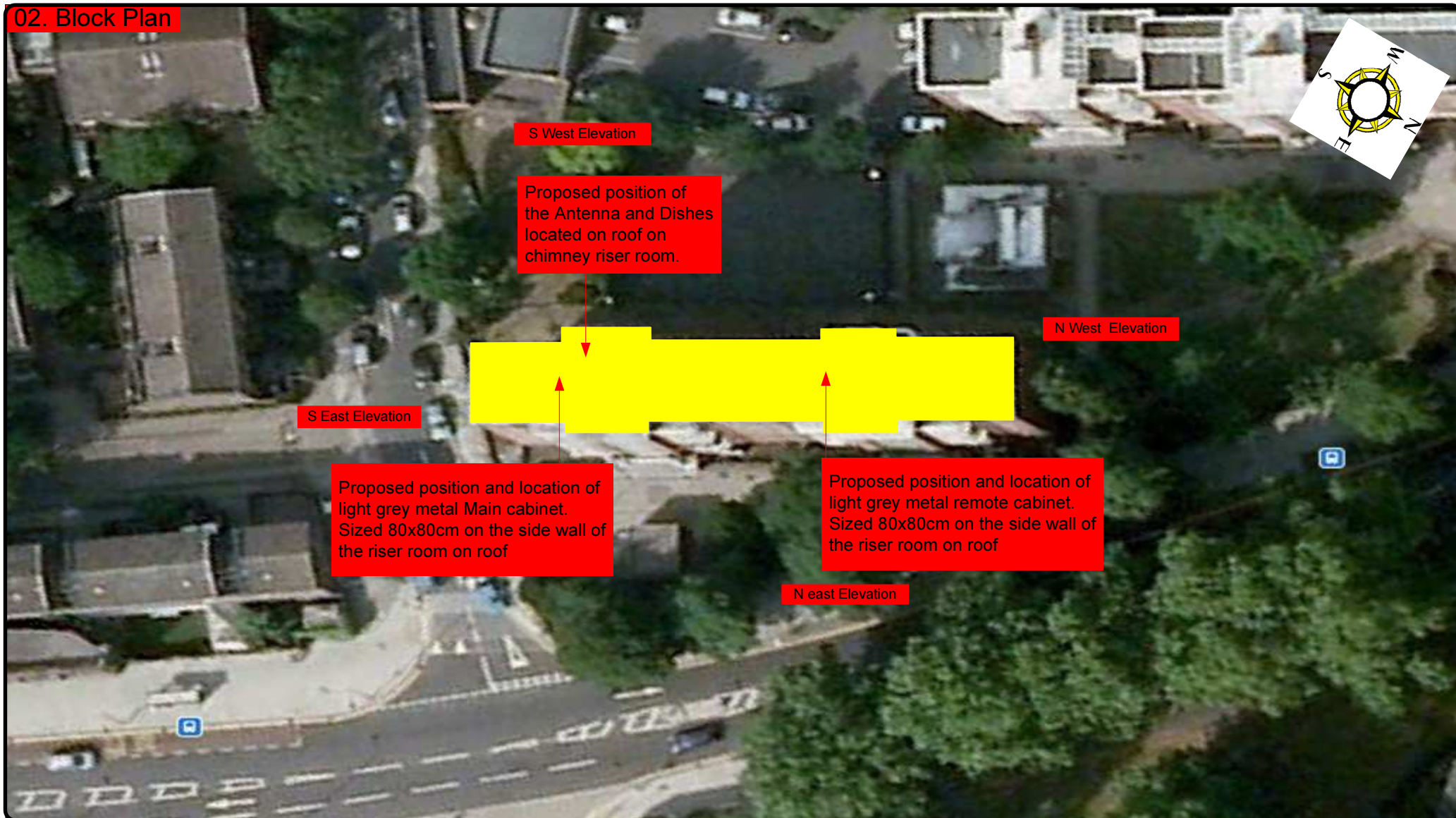
Please consider the environment before printing this document – Recycle Wherever Possible



Drawing No.	E00013/00	Site Address:	1-32 THE CHENIES, PANCRAS WAY LONDON NW1 1UH		
Date:	14/10/2011	Site Ref:	LBC 0144.0	Surveyed By:	G. Henebery
Number of Points:	32	System Type	9Wire IRS Sky Plus	Drawn By:	W. Kisala



## 02. Block Plan



Form No. SCC 013 SCC International – 1 Fieldings Road, Cheshunt, Herts, EN8 9TL, . Tel: 01992 642255. Website: www.scci.co.uk

Drawing No.

E00013/02

Site Address:

1-32 THE CHENIES, PANCRAS WAY LONDON NW1 1UH

Date:

14/10/2011

Site Ref:

LBC 0144.0

Surveyed By:

G. Henebery

Number of Points:

32

System Type

9Wire IRS Sky Plus

Drawn By:

W. Kisala



Please consider the environment before printing this document – Recycle Wherever Possible



### 03. Roof Plan

- All cables (brown) to run from the Main cabinet on roof secured on tray then over the parapet wall down to all lounge points at the rear of the building.
- Link cables to run above riser from the main cabinet to the remote cabinet.
- 2 cables to feed each flat at entry points.

S East Elevation

Proposed position and location of light grey metal Main cabinet. Sized 80x80cm on the side wall of the riser room on roof

S West Elevation

Play area

Power is located inside the tank room

Proposed position and location of light grey metal Main cabinet. Sized 80x80cm on the side wall of the riser room on roof

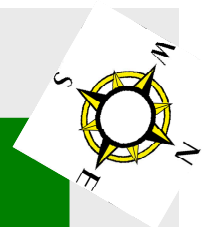
N West Elevation

N east Elevation

Proposed position of the Antenna and Dishes located on roof on the side wall of the chimney above riser room

Chenies Place

Pancras Road



Form No. SCC 013 SCC International – 1 Fieldings Road, Cheshunt, Herts, EN8 9TL, . Tel: 01992 642255. Website: www.scci.co.uk



Please consider the environment before printing this document – Recycle Wherever Possible



Drawing No. E00013/03 Site Address: 1-32 THE CHENIES, PANCRAS WAY LONDON NW1 1UH

Date: 14/10/2011 Site Ref: LBC 0144.0 Surveyed By: G. Henebery

Number of Points: 32 System Type: 9Wire IRS Sky Plus Drawn By: W. Kisala





Each property will have two cables to lounge position.

#### Cable Harness sizes

2-4 cables = 15mm

6-8 cables = 20mm

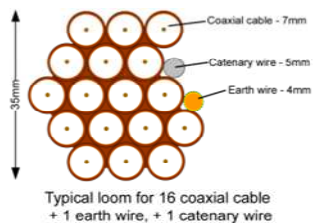
10-14 cables = 30mm

16-18 Cables = 35mm

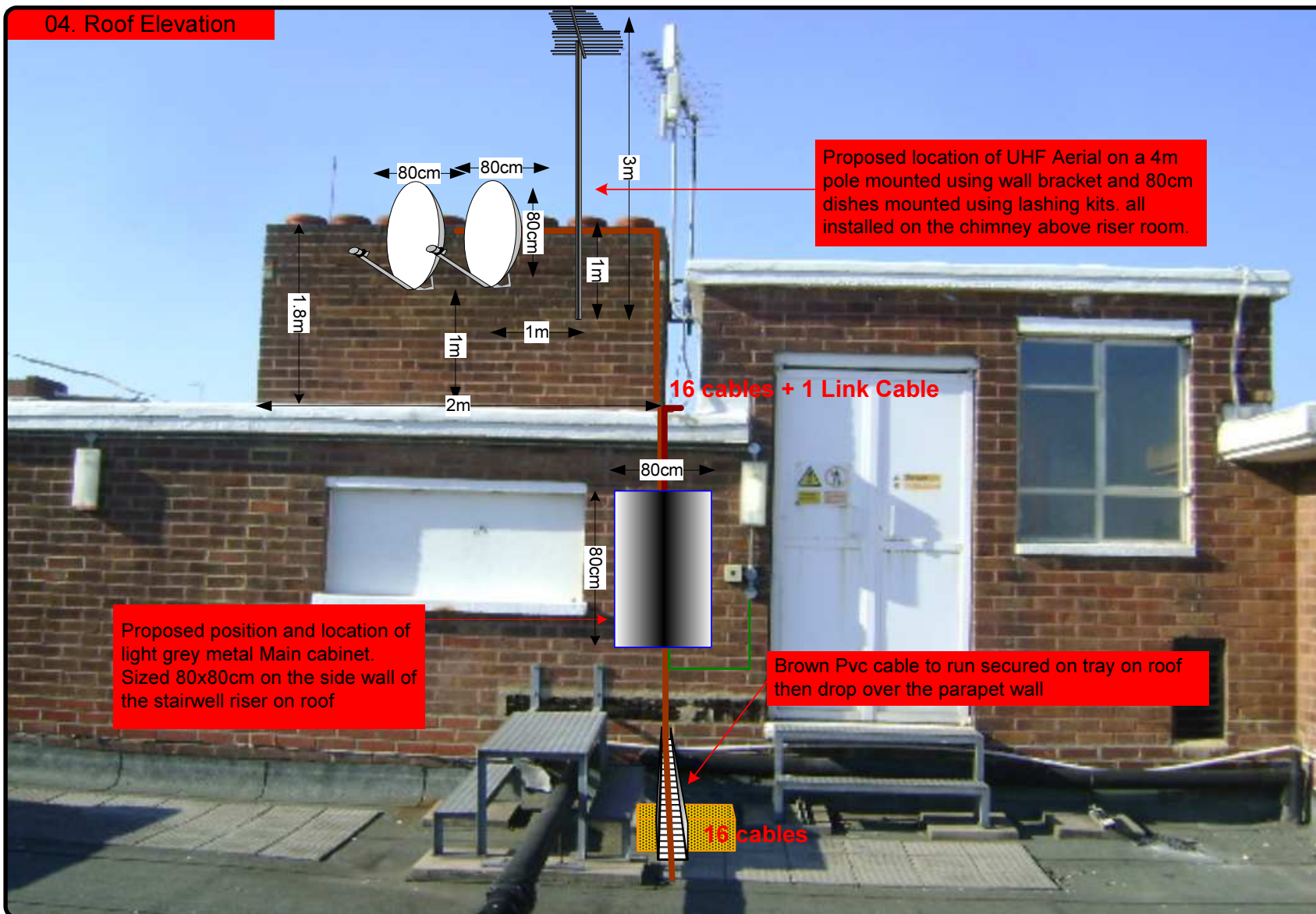
20 cables = 40mm

40 cables = 65mm

60 cables = 90mm



#### 04. Roof Elevation



Form No. SCC 013 SCC International – 1 Fieldings Road, Cheshunt, Herts, EN8 9TL. - Tel: 01992 642255. Website: www.scci.co.uk

Drawing No.	E00013/04	Site Address:	1-32 THE CHENIES, PANCAS WAY LONDON NW1 1UH
Date:	14/10/2011	Site Ref:	LBC 0144.0
Number of Points:	32	System Type	9Wire IRS Sky Plus
		Surveyed By:	G. Henebery
		Drawn By:	W. Kisala



Please consider the environment before printing this document – Recycle Wherever Possible





Each property will have two cables to lounge position.

#### Cable Harness sizes

2-4 cables = 15mm

6-8 cables = 20mm

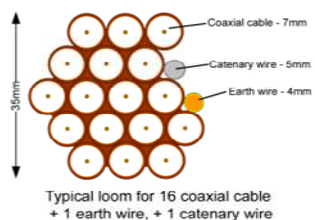
10-14 cables = 30mm

16-18 Cables = 35mm

20 cables = 40mm

40 cables = 65mm

60 cables = 90mm



#### 05. S West Elevation 1



Form No. SCC 013 SCC International – 1 Fieldings Road, Cheshunt, Herts, EN8 9TL, . Tel: 01992 642255. Website: www.scci.co.uk

Drawing No.	E00013/05	Site Address:	1-32 THE CHENIES, PANCRAS WAY LONDON NW1 1UH
Date:	14/10/2011	Site Ref:	LBC 0144.0
Number of Points:	32	System Type	9Wire IRS Sky Plus
		Surveyed By:	G. Henebery
		Drawn By:	W. Kisala



Please consider the environment before printing this document – Recycle Wherever Possible





Each property will have two cables to lounge position.

#### Cable Harness sizes

2-4 cables = 15mm

6-8 cables = 20mm

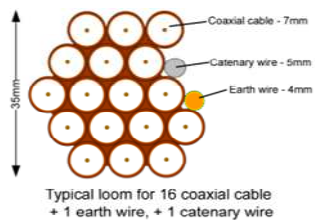
10-14 cables = 30mm

16-18 Cables = 35mm

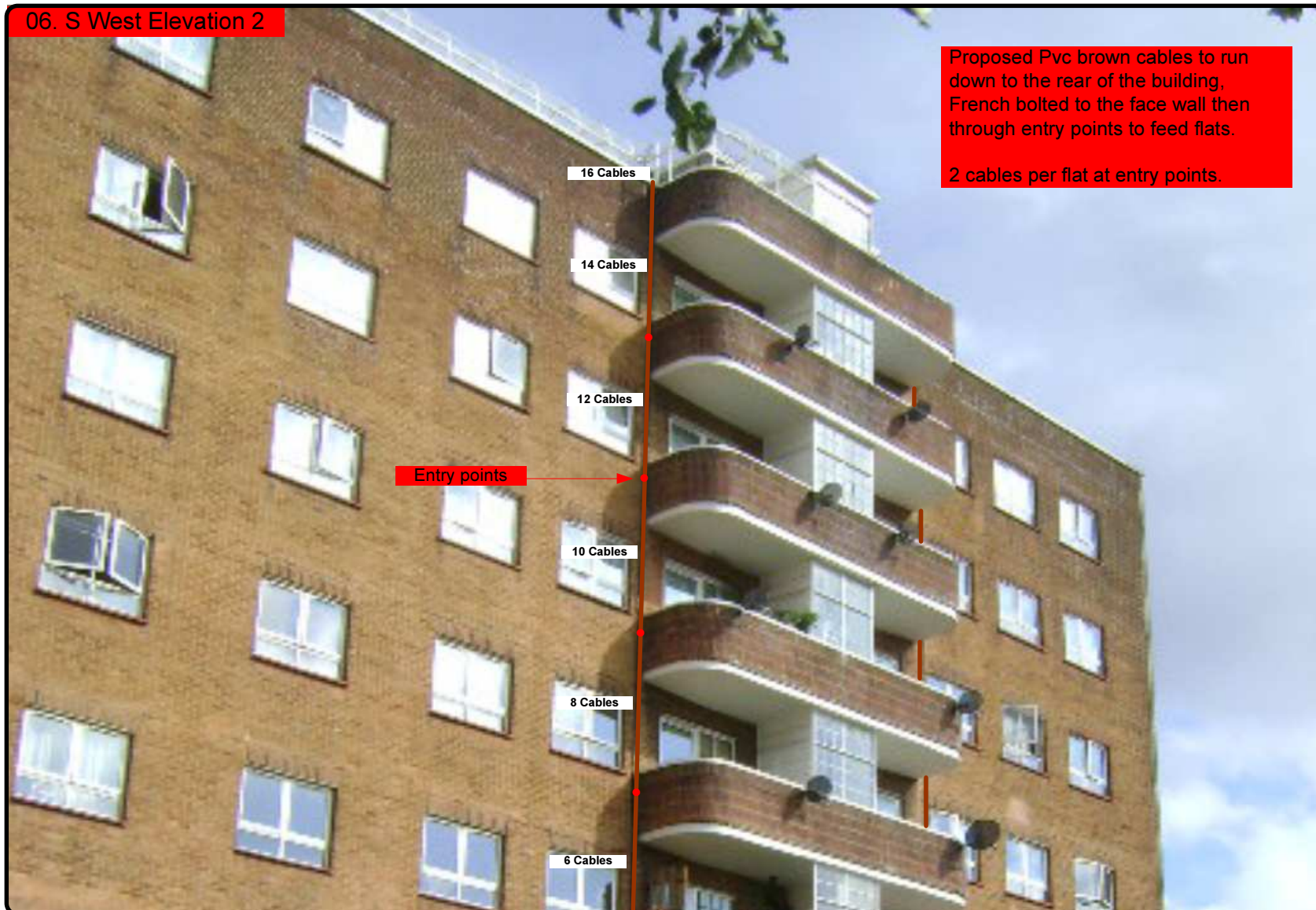
20 cables = 40mm

40 cables = 65mm

60 cables = 90mm



#### 06. S West Elevation 2



Form No. SCC 013 SCC International – 1 Fieldings Road, Cheshunt, Herts, EN8 9TL, . Tel: 01992 642255. Website: www.scci.co.uk

Drawing No. E00013/06 Site Address: 1-32 THE CHENIES, PANCRAS WAY LONDON NW1 1UH

Date: 14/10/2011 Site Ref: LBC 0144.0 Surveyed By: G. Henebery

Number of Points: 32 System Type: 9Wire IRS Sky Plus Drawn By: W. Kisala



Please consider the environment before printing this document – Recycle Wherever Possible



Each property will have two cables to lounge position.

#### Cable Harness sizes

2-4 cables = 15mm

6-8 cables = 20mm

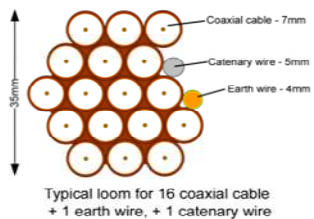
10-14 cables = 30mm

16-18 Cables = 35mm

20 cables = 40mm

40 cables = 65mm

60 cables = 90mm



#### 07. Remote cabinet Location



Form No. SCC 013 SCC International – 1 Fieldings Road, Cheshunt, Herts, EN8 9TL, . Tel: 01992 642255. Website: www.scci.co.uk

Drawing No.	E00013/07	Site Address:	1-32 THE CHENIES, PANCAS WAY LONDON NW1 1UH	
Date:	14/10/2011	Site Ref:	LBC 0144.0	Surveyed By: G. Henebery
Number of Points:	32	System Type	9Wire IRS Sky Plus	Drawn By: W. Kisala



Please consider the environment before printing this document – Recycle Wherever Possible





Each property will have two cables to lounge position.

#### Cable Harness sizes

2-4 cables = 15mm

6-8 cables = 20mm

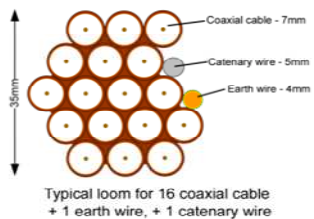
10-14 cables = 30mm

16-18 Cables = 35mm

20 cables = 40mm

40 cables = 65mm

60 cables = 90mm



#### 08. Link Cable Route



Roof Elevation

Form No. SCC 013 SCC International – 1 Fieldings Road, Cheshunt, Herts, EN8 9TL, . Tel: 01992 642255. Website: www.scci.co.uk

Drawing No. E00013/08 Site Address: 1-32 THE CHENIES, PANCRAS WAY LONDON NW1 1UH

Date: 14/10/2011 Site Ref: LBC 0144.0 Surveyed By: G. Henebery

Number of Points: 32 System Type: 9Wire IRS Sky Plus Drawn By: W. Kisala



Please consider the environment before printing this document – Recycle Wherever Possible





Each property will have two cables to lounge position.

#### Cable Harness sizes

2-4 cables = 15mm

6-8 cables = 20mm

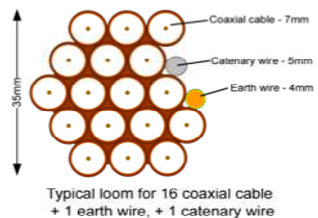
10-14 cables = 30mm

16-18 Cables = 35mm

20 cables = 40mm

40 cables = 65mm

60 cables = 90mm



#### 09. Existing Equipments



Form No. SCC 013 SCC International – 1 Fieldings Road, Cheshunt, Herts, EN8 9TL, . Tel: 01992 642255. Website: www.scci.co.uk

Drawing No. E00013/09 Site Address: 1-32 THE CHENIES, PANCRAS WAY LONDON NW1 1UH

Date: 14/10/2011 Site Ref: LBC 0144.0 Surveyed By: G. Henebery

Number of Points: 32 System Type: 9Wire IRS Sky Plus Drawn By: W. Kisala

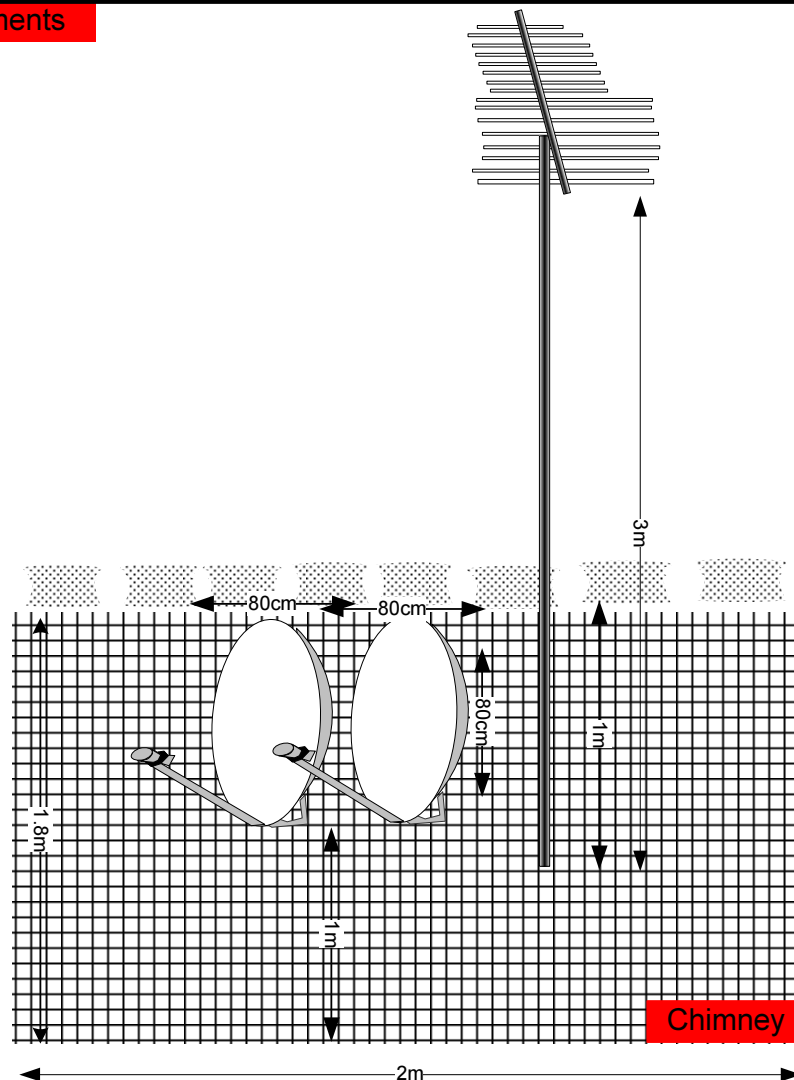


Please consider the environment before printing this document – Recycle Wherever Possible



## 10. Antenna and Dishes Measurements

Digital TV,  
FM & DAB Radio  
Aerials



Proposed location of UHF Aerial on a 3m pole mounted using wall bracket and 80cm dishes mounted using lashing kits. all installed on the chimney wall on roof

Form No. SCC 013 SCC International – 1 Fieldings Road, Cheshunt, Herts, EN8 9TL, . Tel: 01992 642255. Website: www.scci.co.uk

Drawing No. E00013/10 Site Address: 1-32 THE CHENIES, PANCRAS WAY LONDON NW1 1UH

Date: 14/10/2011 Site Ref: LBC 0144.0 Surveyed By: G. Henebery

Number of Points: 32 System Type: 9Wire IRS Sky Plus Drawn By: W. Kisala



Please consider the environment before printing this document – Recycle Wherever Possible

