

Data source - BGS Mapping - Scale 1:10,000



Scale at A3: 1:30,000

Coordinate System:
British National Grid
GCS_OSGB_1936

Legend

- London Borough of Camden
- Railway Lines
- A Roads

- MADE GROUND
- WORKED GROUND

BGS 1:10K Artificial Ground

- ALLUVIUM
- HACKNEY GRAVEL FORMATION
- LANGLEY SILT FORMATION
- LYNCH HILL GRAVEL FORMATION
- STANMORE GRAVEL FORMATION

BGS 1:10K Solid Geology

- BAGSHOT FORMATION
- CLAYGATE MEMBER
- LAMBETH GROUP
- LONDON CLAY FORMATION

NB: Geological boundaries are largely indicative based on available geological mapping data

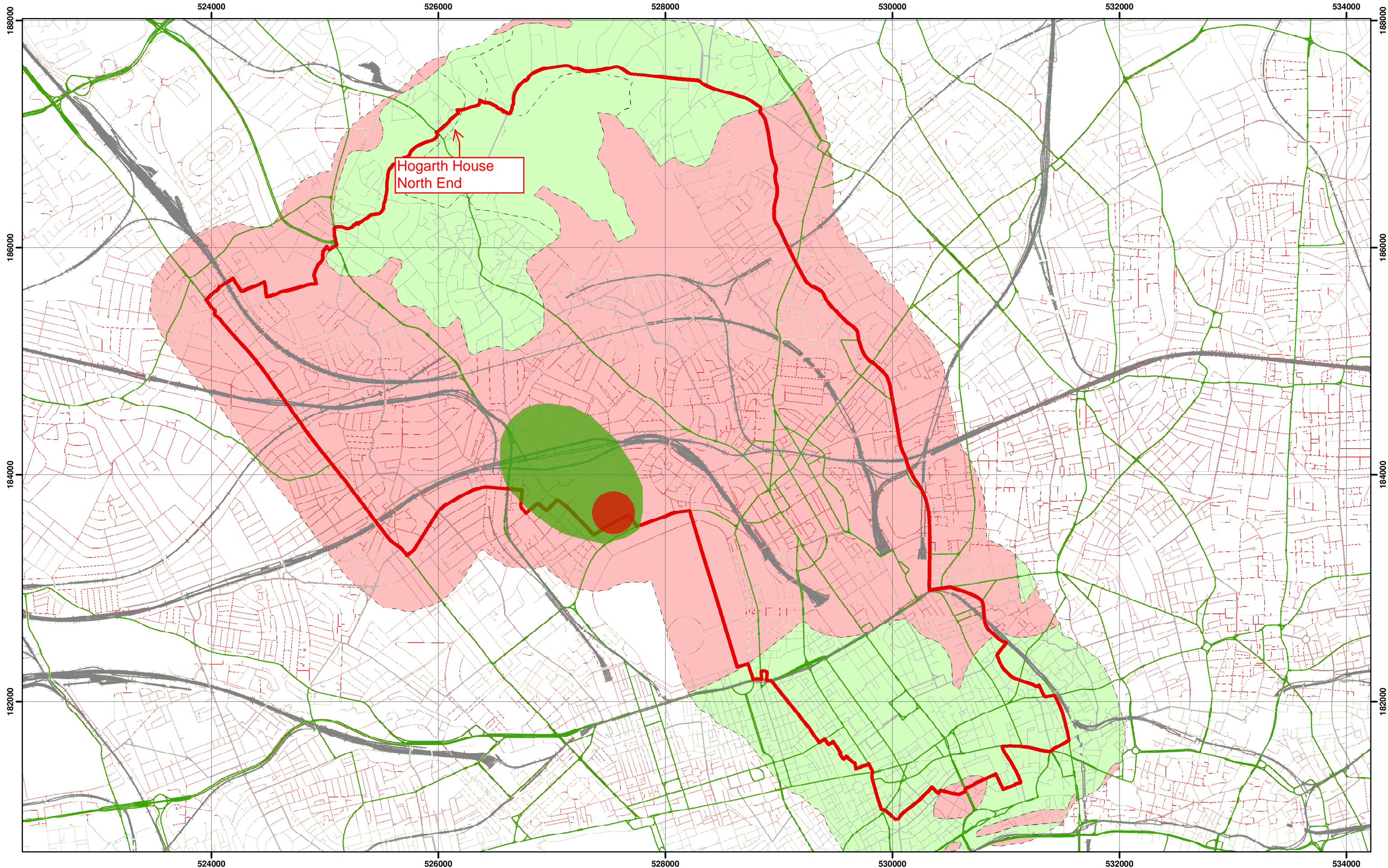
Camden Geological, Hydrogeological and Hydrological Study

Camden Geological Map

213923

FIGURE

3



Environment Agency Aquifer Designation based on BGS Mapping



Scale at A3: 1:30,000

Coordinate System:
British National Grid
GCS_OSGB_1936

Legend



Borough of Camden

Railway Lines

A Roads

Aquifer Designation

Secondary A Aquifer

Unproductive Strata

Source Protection Zone

Outer Source Protection Zone

Inner Source Protection Zone

NB. Aquifer boundaries are indicative based on available geological mapping data

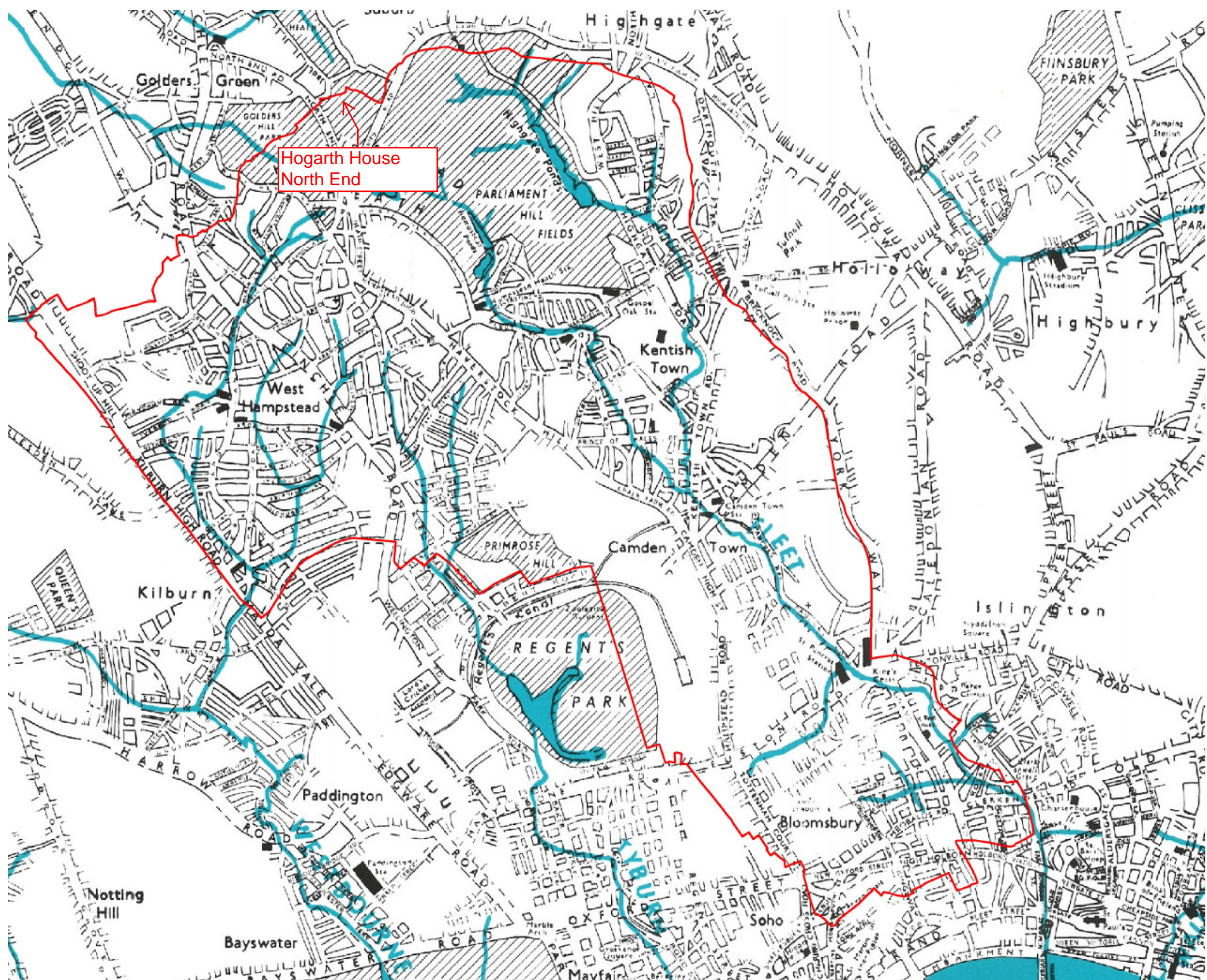
Camden Geological, Hydrogeological and Hydrological Study

Camden Aquifer Designation Map

213923

FIGURE

8



Camden Geological, Hydrogeological and Hydrological Study
Watercourses

Source – Barton, Lost Rivers of London

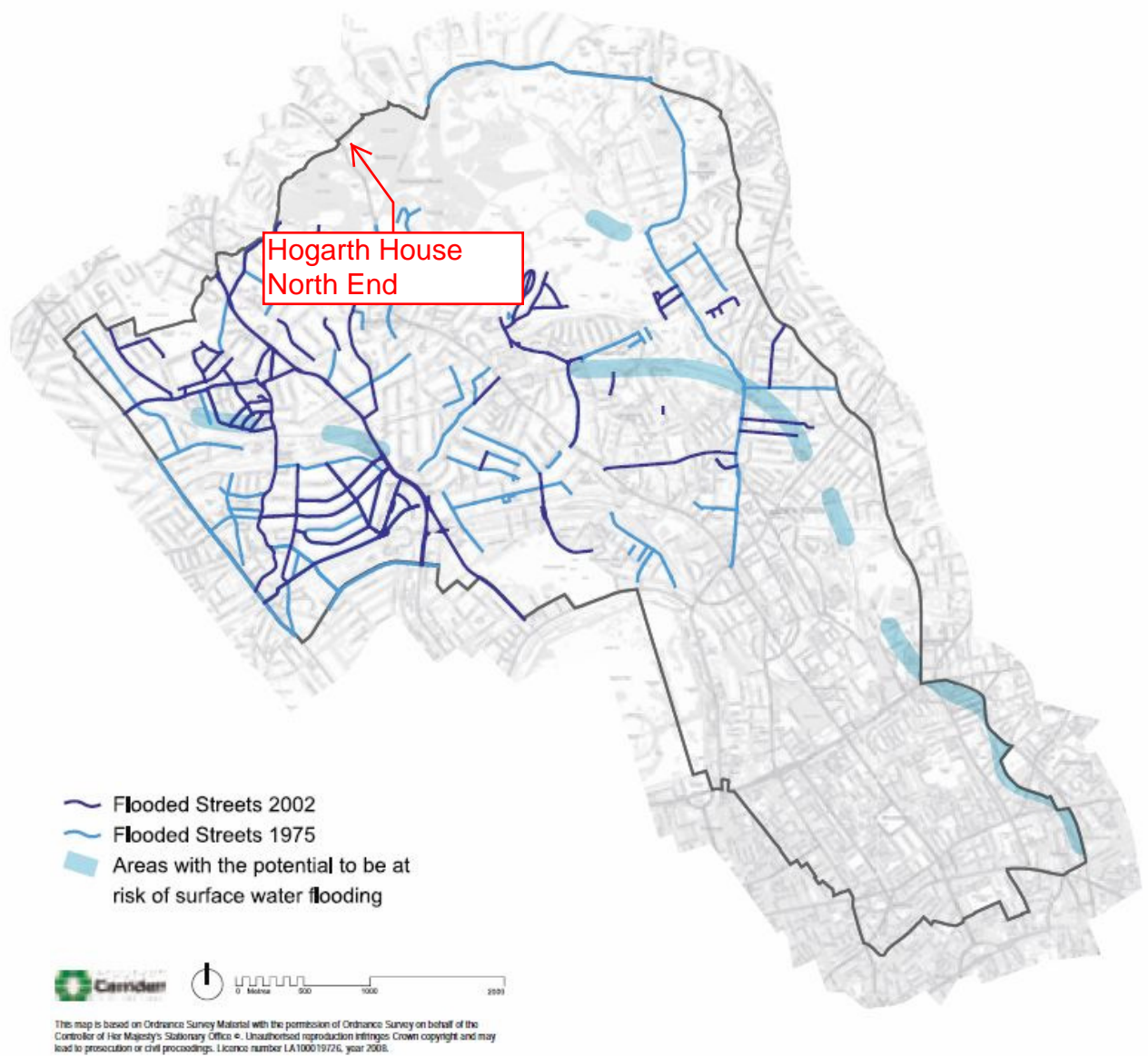
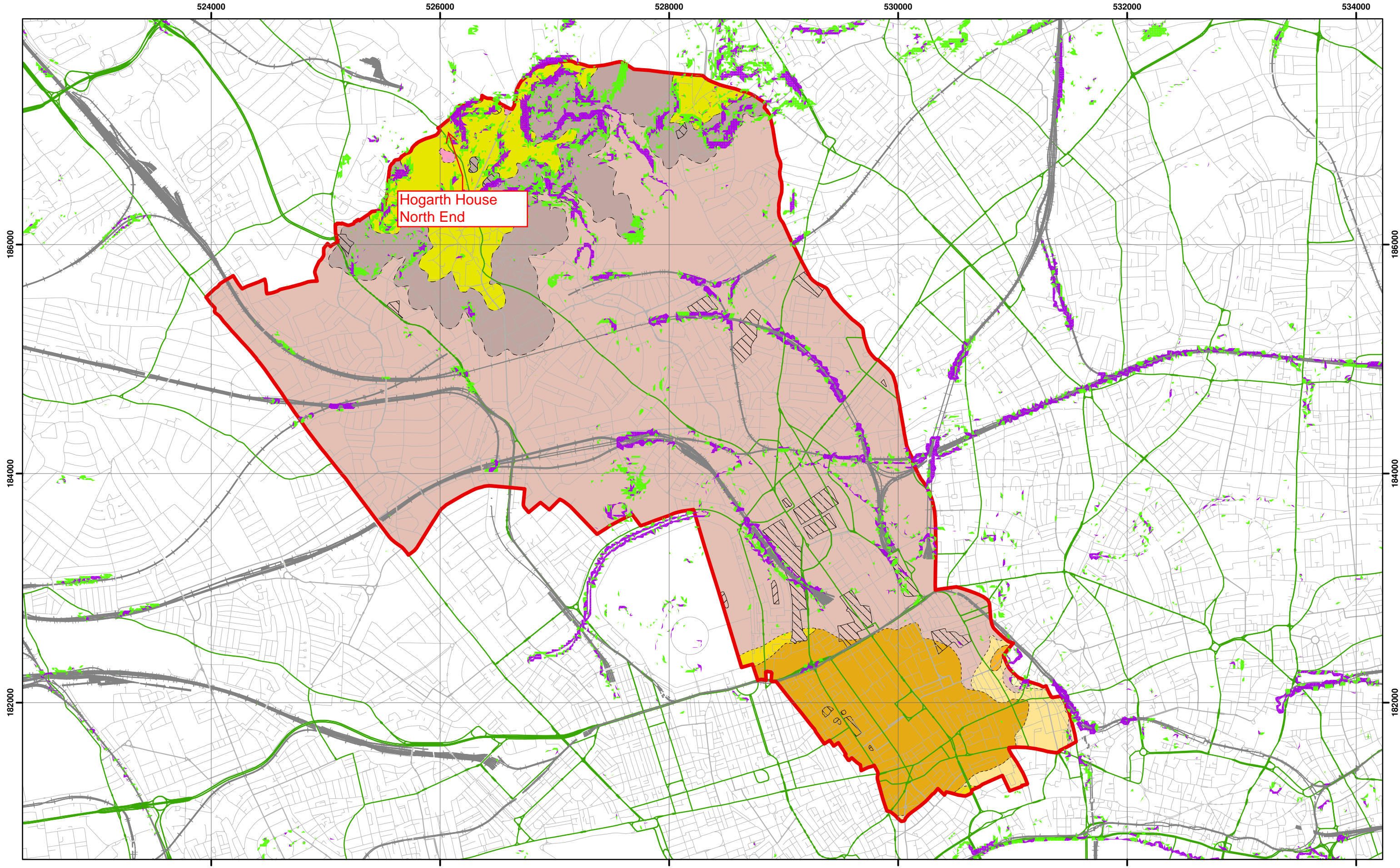


Figure 5 from Core Strategy, London Borough of Camden

Camden Geological, Hydrogeological and Hydrological Study Flood Map



Slope Angles calculated from Digital Terrain Model Provided By Camden Borough Council



Scale at A3: 1:30,000

1:10,000 BGS Mapping
Coordinate System:
British National Grid
GCS_OSGB_1936

Legend

Slope

- 0° - 7°
- 7° - 10°
- > 10°



- Railway Lines
- A Roads

- BGS 1:10K Artificial Ground**
- MADE GROUND
 - WORKED GROUND

- BGS 1:10K Drift Geology**
- ALLUVIUM
 - HACKNEY GRAVEL FORMATION
 - LANGLEY SILT FORMATION
 - LYNCH HILL GRAVEL FORMATION
 - STANMORE GRAVEL FORMATION

- BGS 1:10K Solid Geology**
- BAGSHOT FORMATION
 - CLAYGATE MEMBER
 - LAMBETH GROUP
 - LONDON CLAY FORMATION

NB. Geological boundaries are largely indicative based on available geological mapping data

Camden Geological, Hydrogeological and Hydrological Study

Slope Angle Map

213923

FIGURE

16