



[01] STREET VIEW FROM COBDEN JUNCTION



[02] VIEW FROM HAMPSTEAD ROAD

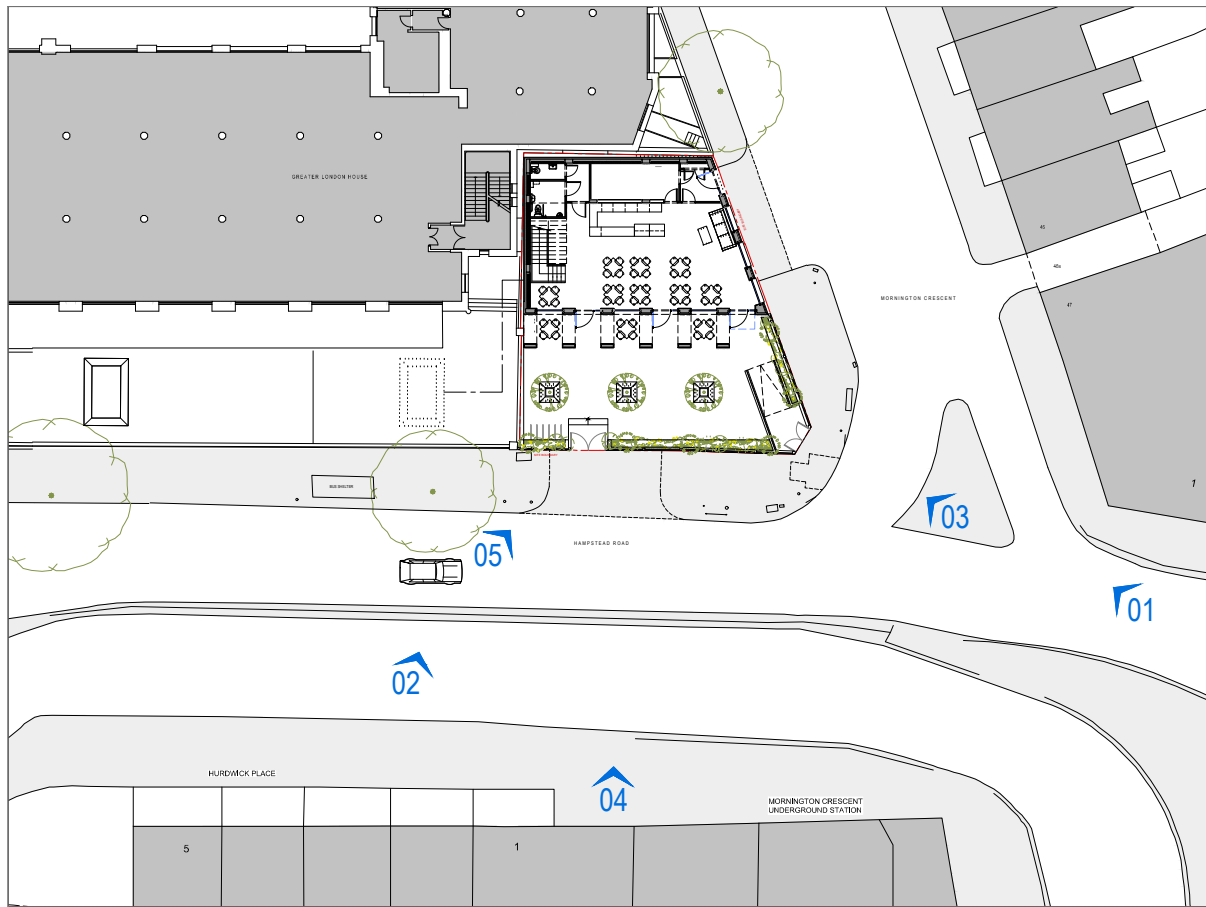


IMAGE LOCATION PLAN



[03] AERIAL VIEW FROM COBDEN JUNCTION



[04] AERIAL VIEW



[05] STREET VIEW OF FRONT ELEVATION FROM HAMSTEAD ROAD

PROPOSED 3D VIEWS

VIVENDI ARCHITECTS LTD
 Unit E3U, Bounds Green Industrial Estate, Ringway, London N11 2UD
 Tel/Fax +44 (0)20 3332 4000 - email: info@vivendiarchitects.com
 © VIVENDI ARCHITECTS LTD 2009
 All rights reserved, including but not limited to The Copyright, Designs and Patents Act 1988

CLIENT:
LAZARI INVESTMENTS LTD

P1 05/10/11 Planning issue

ISO-A2

PROJECT TITLE:
CORNER SITE TO GREATER LONDON HOUSE, HAMPSTEAD ROAD, LONDON NW1 7QY.
 DRAWING TITLE:
Proposed 3D Views

DRAWN:
 SP
 CHECKED:
 GK
 ISSUED BY:
 DA

STATUS:
PLA

SCALE AT A2:
 NTS

DATE:
 05/10/2011

REVISION:
 P1

JOB AND DRAWING NO:

1288-3D-00