

Location Plan

- Site boundary
- Overall Ownership boundary
- Student Entrance to residential units on upper floors

Travelling Routes from Student residential units to Cycle Store

Cycle storage will be located at basement level below the student entrance. Students can access the Cycle Storage safely and conveniently.

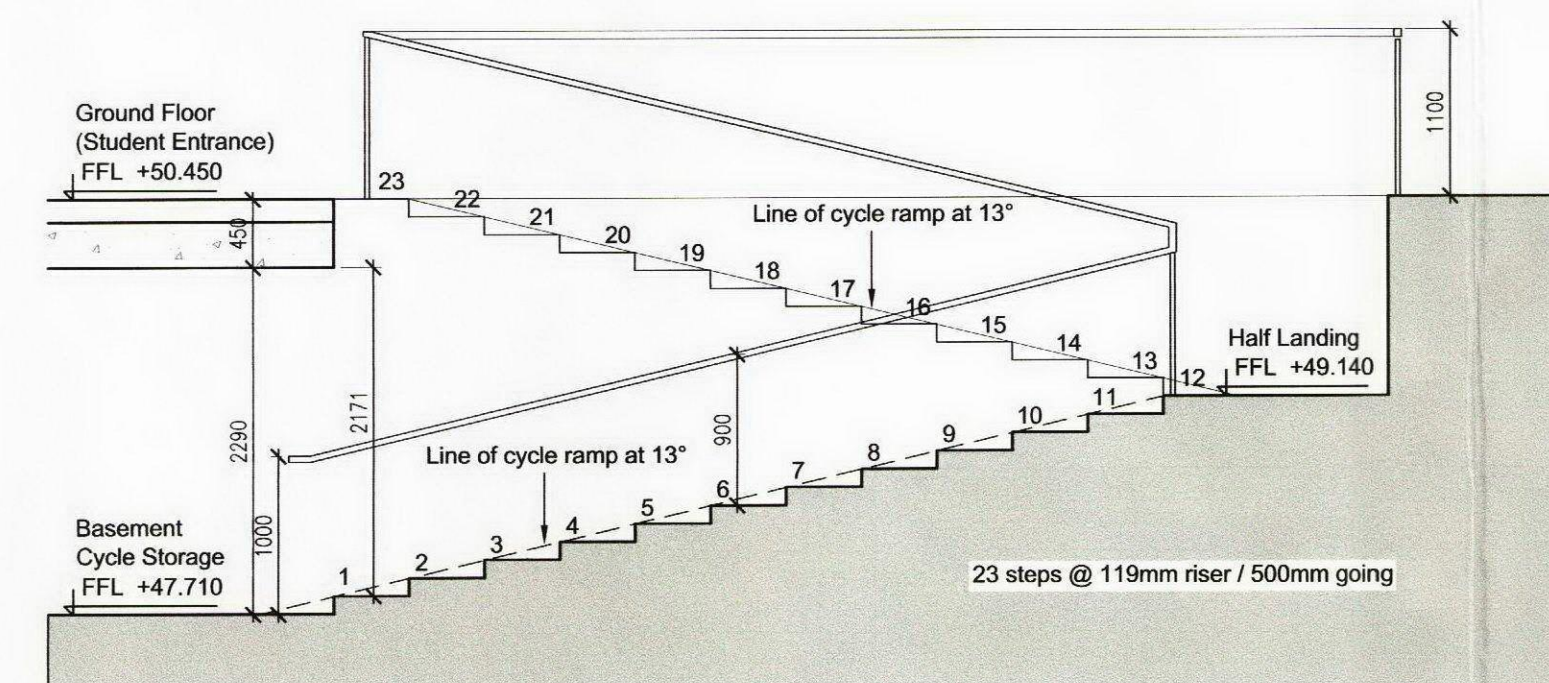
Students in the upper floors of Blocks A to D can travel to the Student Entrance on the ground level by lift or staircase. Students must then make their way to the Student Entrance Foyer where they access the basement level via the staircase. On retrieving their bicycle students return up the staircase using the ramp provided for ease of maneuverability.

Cyclists will exit the building via the Student Entrance. An access control system will be located inside and outside the doors of the Student Entrance and the Cycle Storage.

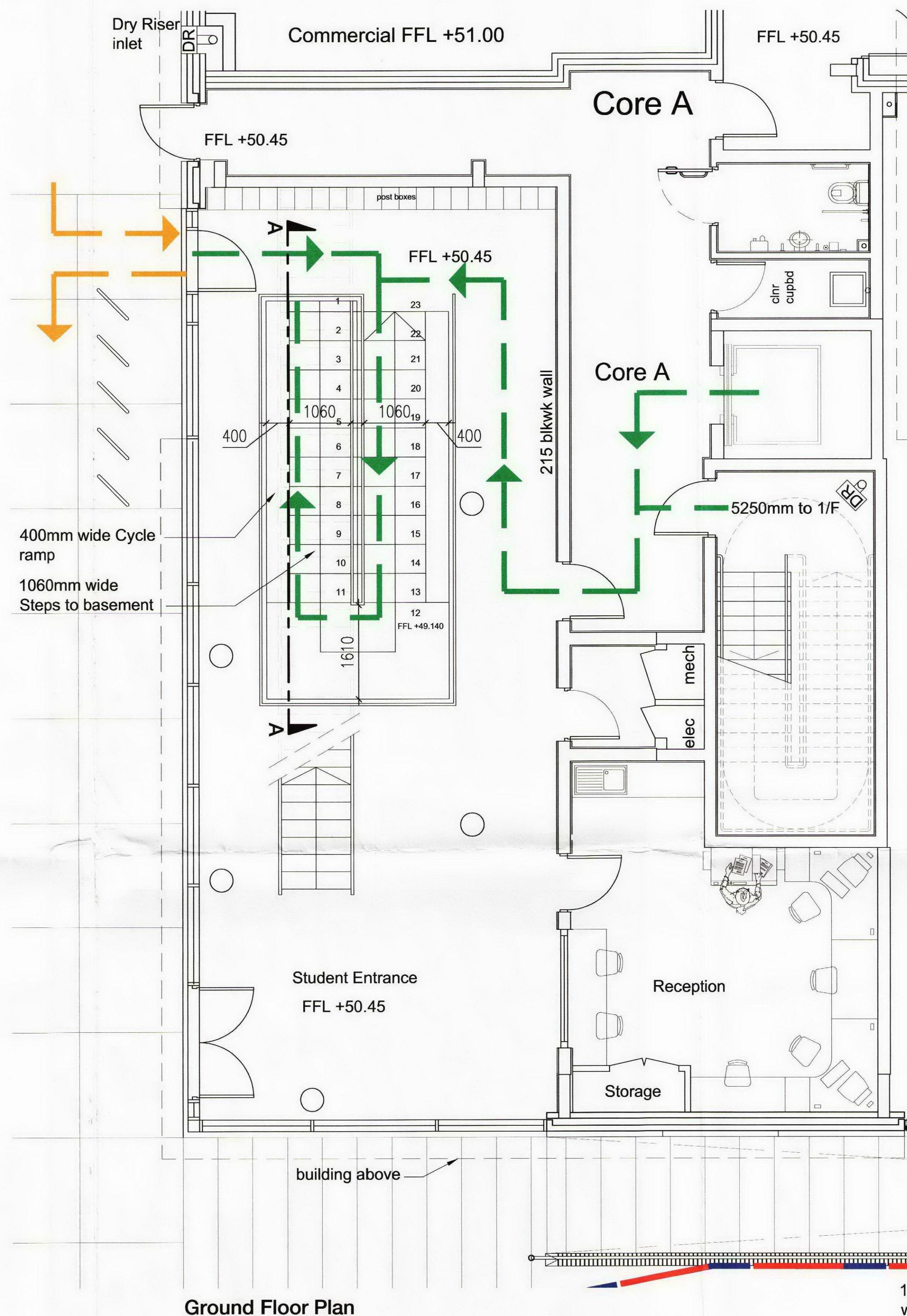
Cycle Storage Area at Basement Level for 176 cycles in total. It contains 164 numbers of Josta 2-tier bike racks. One cycle per rack. 2 racks are installed as 1 unit - one rack at the top, one rack at the bottom, directly underneath. Bike rack unit size: 2m (L) x 0.4m (W) x 2.6m (H) Manufacturer: Cycle-Work Limited 2 Rances Way, Winchester, SO22 4PN Tel: 02392 81 5555 Fax: 02392 81 5544 www.cycle-works.com

Also containing 6 number surfaced mounted Basic Sheffield Cycle Stands accommodating 12 number cycles

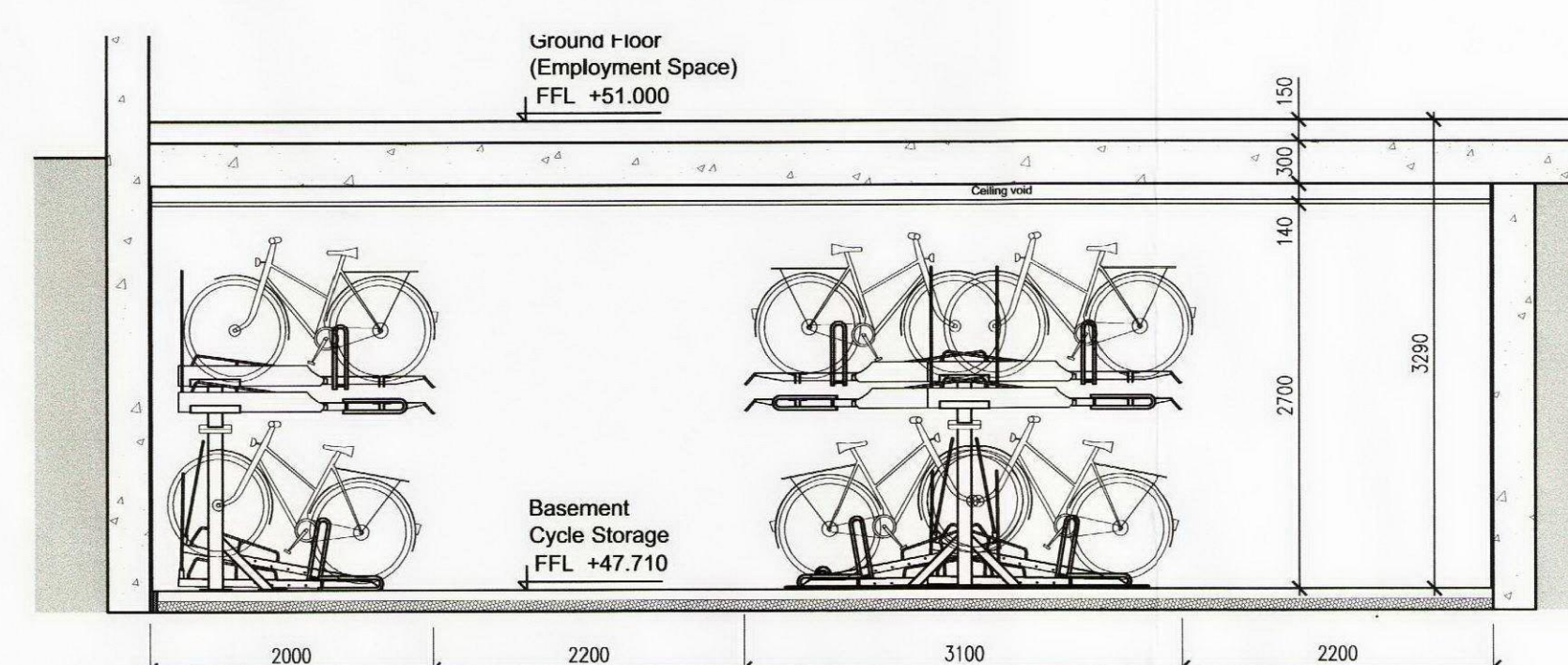
Door 'hold open' devices will be provided at the door to the basement cycle storage area. The hold open device(s) will be linked to the fire alarm via suitable relay interface and configured to automatically release, in the event of a fire alarm activation. The door is manually openable when the 'hold open' device is released.



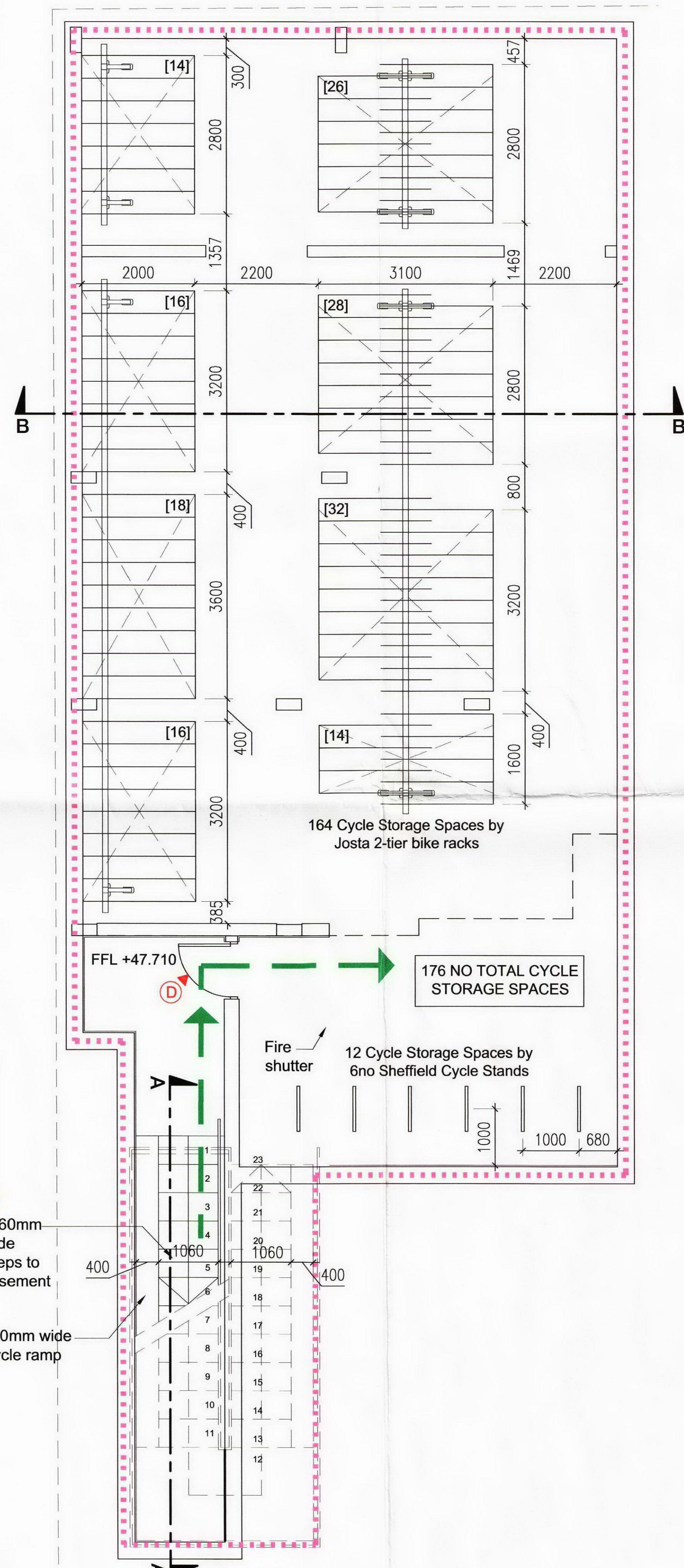
Section A-A



Ground Floor Plan



Section B-B



Basement Floor Plan - cycle storage

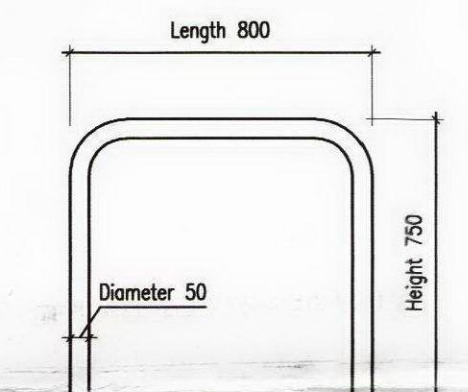
Notes
Contractor must verify all dimensions on site before commencing any work or shop drawings.
If this drawing exceeds the quantities taken in any way the Architects are to be informed before the work is initiated.
Only figured dimensions to be taken from this drawing.
Do not scale off this drawing.
Drawings based on Ordnance Survey and / or existing record drawings - design and drawing content subject to Site Survey, Structural Survey, Site Investigations, Planning and Statutory Requirements and Approvals.
Authorized reproduction from Ordnance Survey Map with permission of the Controller of Her Majesty's Stationary Office. Crown Copyright reserved.
Carey Jones Architects Limited Copyright.

This drawing originates from the CAD file:

Revisions	Rev	Des	By	Date	Ch
P1	1		KmC	11.03.11	KmC
P2	2	G/F concrete slab thickness increased from 200mm to 300mm. Basement FFL revised.	KmC	25.03.11	KmC
P3	3	Ramp width increased to 400mm.	ABB	01.04.11	KmC
Notes revised					



Josta 2-tier Bike racks



Sheffield Cycle Stands - Surfaced Fixed

careyjones
chapmanfletcher

Victoria House, Southampton Row
Bloomsbury, London WC1B 4EA
Tel +44 (0)20 7269 9400
Fax +44 (0)20 7269 9401

Rose Wharf, East Street
Leeds LS9 8EE
Tel +44 (0)113 224 5000
Fax +44 (0)113 224 5001

Royal Mills, 17 Redhill Street
Manchester M4 5BA
Tel +44 (0)161 601 6573
Fax +44 (0)161 601 6574

Project: West Hampstead
Title: Cycle Storage Strategy

Scale: 1:50 @ A1
Date: March 2011
Drawing No: (SK) 901

Job No: 23094
Drawn by: ABB
Checked by: KMC
Revision No: P3