

**Appendix 1:** List Description from English Heritage's National Heritage List for England



TQ2984SW JEFFREY'S STREET 798-1/66/940 (North side) 14/05/74 Nos.11-33 (Odd) and attached railings

## GV II

Terrace of 12 houses. Early C19. End houses (Nos 11 & 33) and centre houses (Nos 21 & 23) stucco with rusticated ground floors; other houses yellow stock brick (upper floors mostly refaced) with stucco ground floors and 1st floor band. 3 storeys and basements. 2 windows each except end and centre houses with 1 window each. Round-arched ground floor openings except windows of end and centre houses being segmental-arched sashes. Doorways with reeded surrounds, radial or patterned fanlights and mostly panelled doors. Ground floor sashes mostly with margin glazing. End and centre houses upper floors with segmental-arched tripartite sashes; 1st floors with cast-iron balconies. Others houses with gauged brick flat arches to recessed casements with cast-iron balconies on 1st floors; 2nd floors, segmental-arched recessed sashes. Parapets; centre houses with blocking course.

INTERIORS: not inspected.

SUBSIDIARY FEATURES: attached cast-iron railings with urn finials to areas.



**Appendix 2:** Photos





Appendix 2: 2.1 General view east along Jeffrey's Street.



Appendix 2: 2.2 Oblique easterly view east along Jeffrey's Street, showing No. 13 in its context.





Appendix 2: 2.3 General view west along Jeffrey's Street.

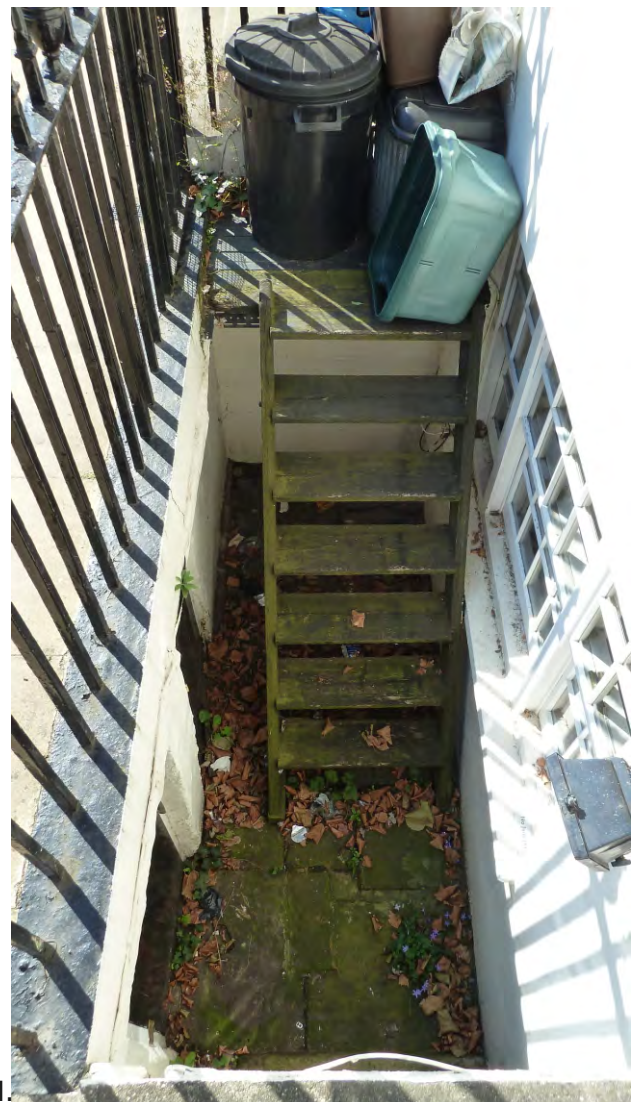


Appendix 2: 2.4 Oblique westerly view east along Jeffrey's Street, showing No. 13 in its context.





Appendix 2: 2.5 Frontal view of No. 13 in its context.



Appendix 2: 2.6 The front light well.





Appendix 2: 2.7 The rear part of the Jeffrey's Street terrace as seen through the gap in between the buildings on Farrier Street.



Appendix 2: 2.8  
The rear elevation of No. 13.





Appendix 2: 2.9  
The rear elevation of No. 13.



Appendix 2: 2.10 Detail of the upper part of the rear elevation.





Appendix 2: 2.11  
The rear door of No. 13.



Appendix 2: 2.12  
The basement rear window and  
junction with the extension.





Appendix 2: 2.13 General view of the rear extension.

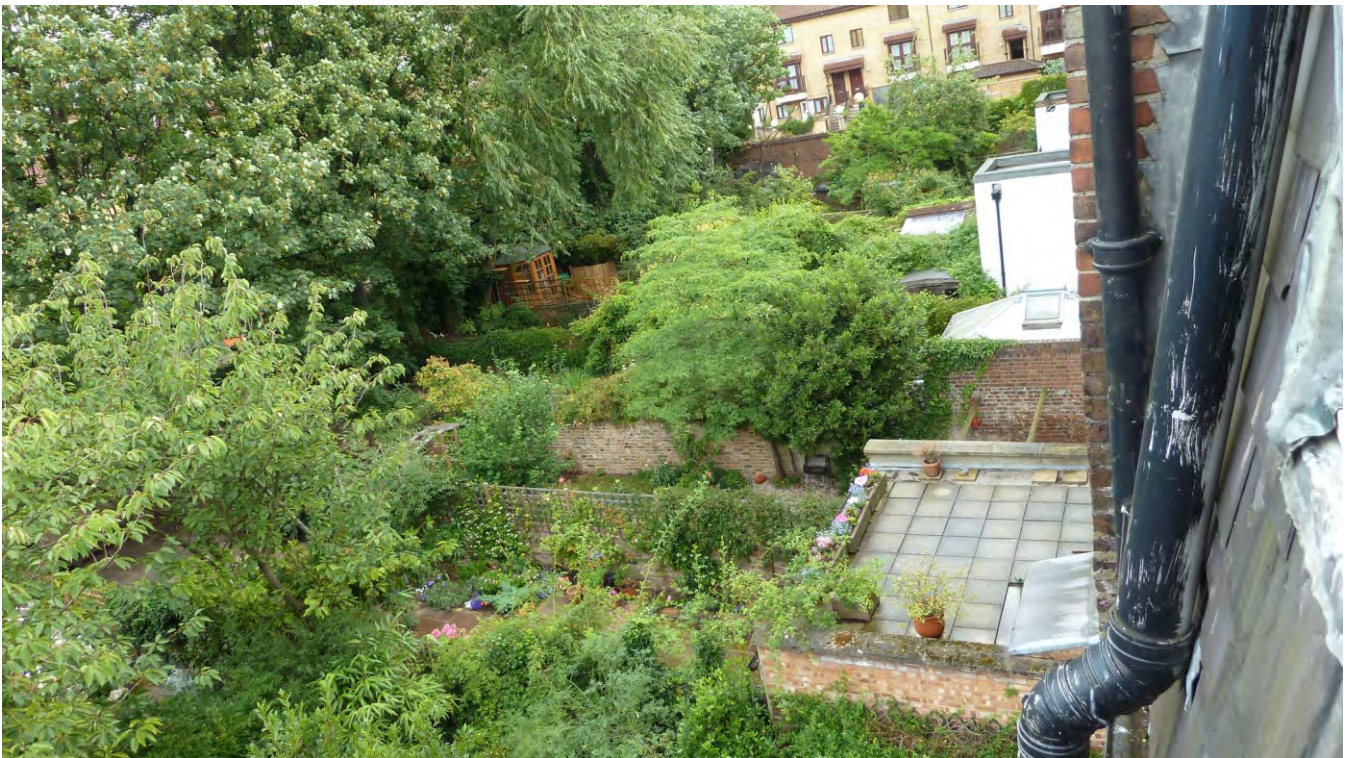


Appendix 2: 2.14 East elevation of the rear extension.





Appendix 2: 2.15 The rear extension from the back door.



Appendix 2: 2.16 General view east from the second floor of No. 13, showing the rear extensions further along the terrace.





Appendix 2: 2.17 The front basement room.



Appendix 2: 2.18 The rear basement room, looking towards the stairs.





Appendix 2: 2.19 The rear basement room, looking towards the extension.



Appendix 2: 2.20  
View into the rear extension.





Appendix 2: 2.21 View back from inside the rear extension.



Appendix 2: 2.22  
View of the basement staircase, from the half  
landing at the rear door.





Appendix 2: 2.23 General view of the ground floor interior from the rear. Note the downstand where the hallway wall was removed.



Appendix 2: 2.24 General view of the ground floor interior from the front towards the rear. Note the downstand where the hallway wall was removed.





Appendix 2: 2.25 General view of the ground floor front room, showing the fireplace.



Appendix 2: 2.26 Detail of the reeded marble chimneypiece at the ground floor fireplace.