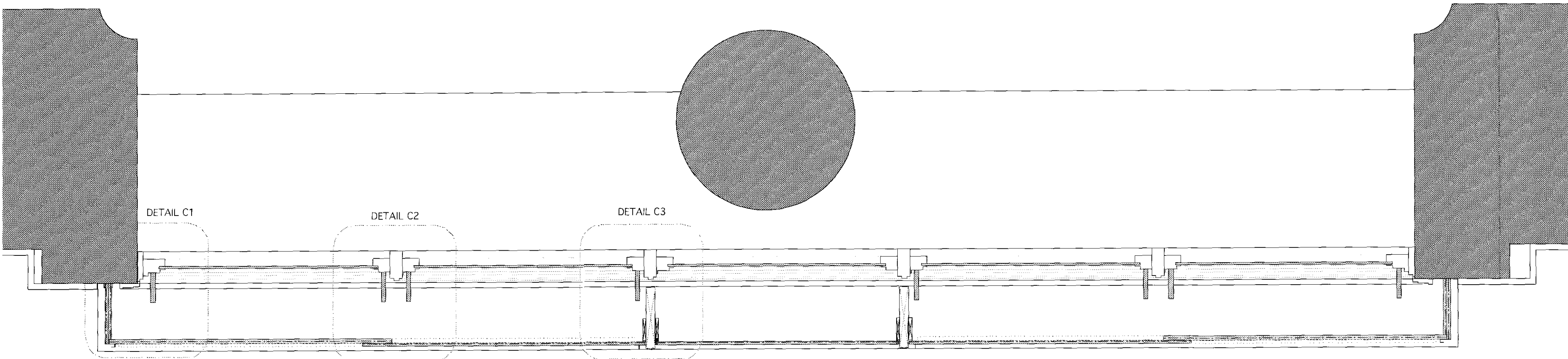
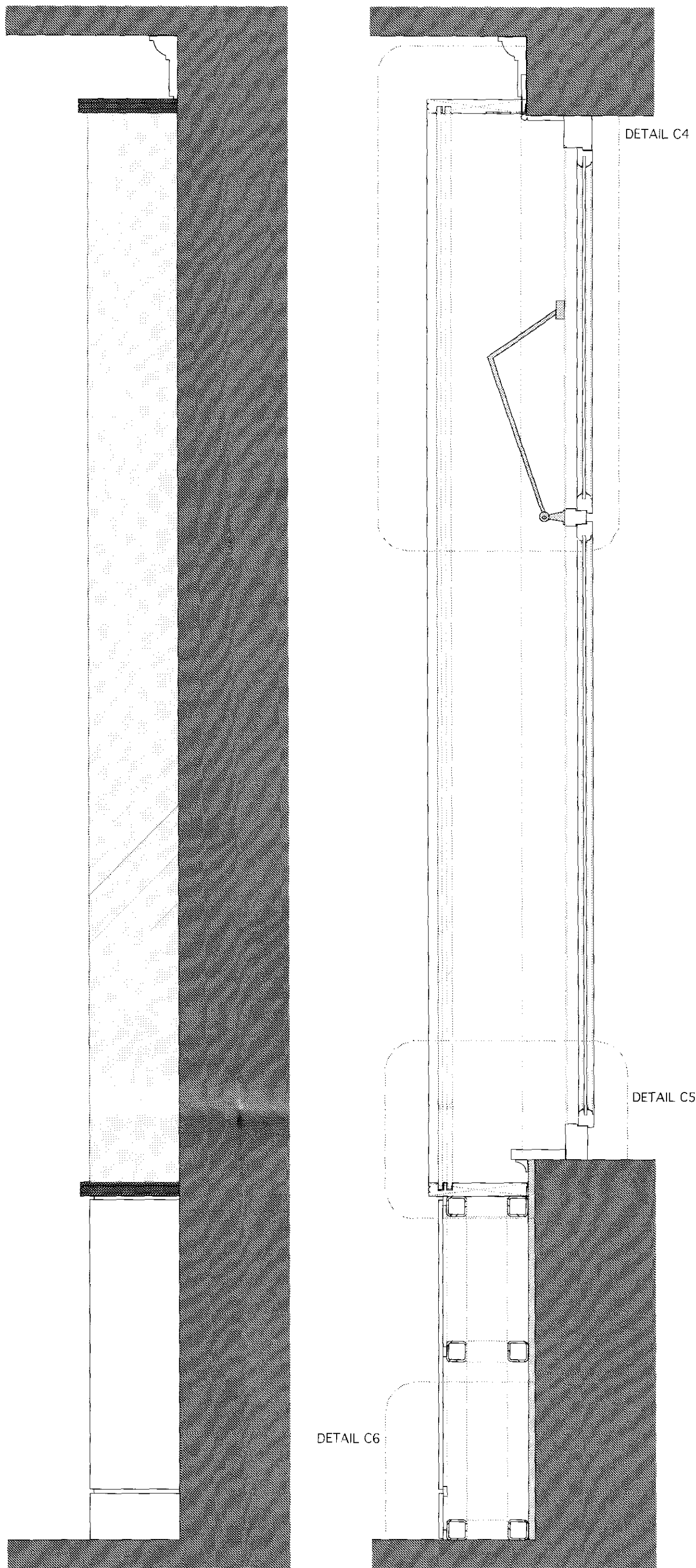


RG11 Typical Type 2 Glazing Elevation.
Scale: 1:10



RG11 Plan Section through Type 2 Glazing
Scale: 1:10



RG11 Type 2 Glazing End Elevation
Scale: 1:10

RG11 Section Through Type 2 Glazing
Scale: 1:10

"Glass Box" secondary glazing over existing windows in open office areas where lack of window recess requires secondary glazing to be installed projecting from the wall but does not obstruct light from the window.

projecting glass box allows existing winding gear to be retained on the existing windows as required.

Sliding and fixed front panels formed from laminated glass sheet with supported from the floor on steel section framework with fixed panels with lacquer finish. Skirting detail to match adjacent.

All timber sections to be finished to match adjacent timber with front edge moulding detail as per existing framework.

Cill and head sections contain recessed aluminium extrusion to provide slide channel with rubber buffers at each end. S-section aluminium extrusion bonded to closing edge of sliding panels to provide finger pull for glass panels to allow for opening & closing as needed.

Silicon gasket bonded into stop ends to provide acoustic seal.

Glass edge panels supported from below & held against wall in face fixed aluminium channel. Top of glass panels recessed into head section.

Acoustic seals to all edges & junctions as required.

Notes

DO NOT SCALE (Use figured dimensions only).
Critical dimensions are identified thus: *
Contractor to verify ALL dimensions prior to commencing work.
Any discrepancies are to be reported to Tilney Shane Ltd.
All setting out is to be approved PRIOR to fabrication.

This drawing is to be read in conjunction with all other relevant design and contract information.

Use of this drawing by third parties in the preparation of their own design information is unwarranted by Tilney Shane Ltd. and is the users sole risk.

The accuracy of electronic copies (or hardcopies thereof) is unwarranted by Tilney Shane Ltd.

Copyright of design and drawings reserved by Tilney Shane Ltd.

Deleterious Materials

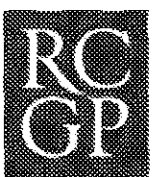
The contractor shall not specify or permit to be used in the Works any substances generally known to be deleterious, including but not limited to substances not in accordance with statutory requirements, British Standards and Codes of Practice, good building practice or which are published in the Building Research Establishment Digests as being deleterious at the time of incorporation within the Works.

P	16.09.11	FOR PLANNING APPROVAL	AB
Rev	Date	Notes	Checked

This drawing is to be read inconjunction with tilney shane ltd construction drawings, NBS specification and its schedules.

Client	Royal College of General Practitioners		
Scale	1:10 @ A1		
Date	22.07.2011		
Drawn by	RS	Ckd. by	SPE
App. by	AB		
Project	RG10 - 30 Euston Road		
Title	TYPE 3 (Listed areas) Secondary Glazing Details - Level 2, Level 3 & Level 4 Melfon street elevation.		
Dwg no.	RG10.2419		P
Drawing Status	FOR PLANNING APPROVAL		

tilney shane

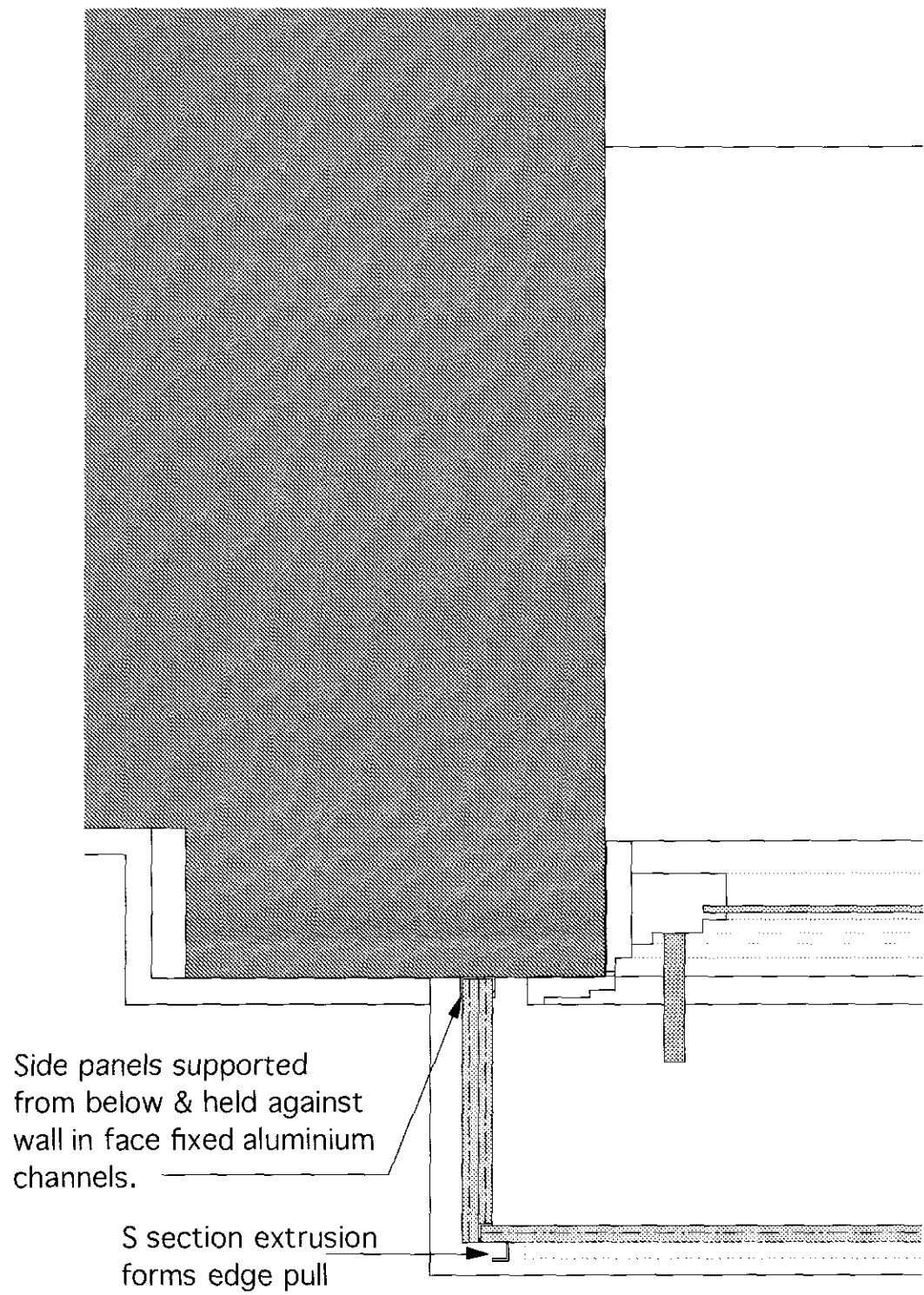


Royal College of
General Practitioners

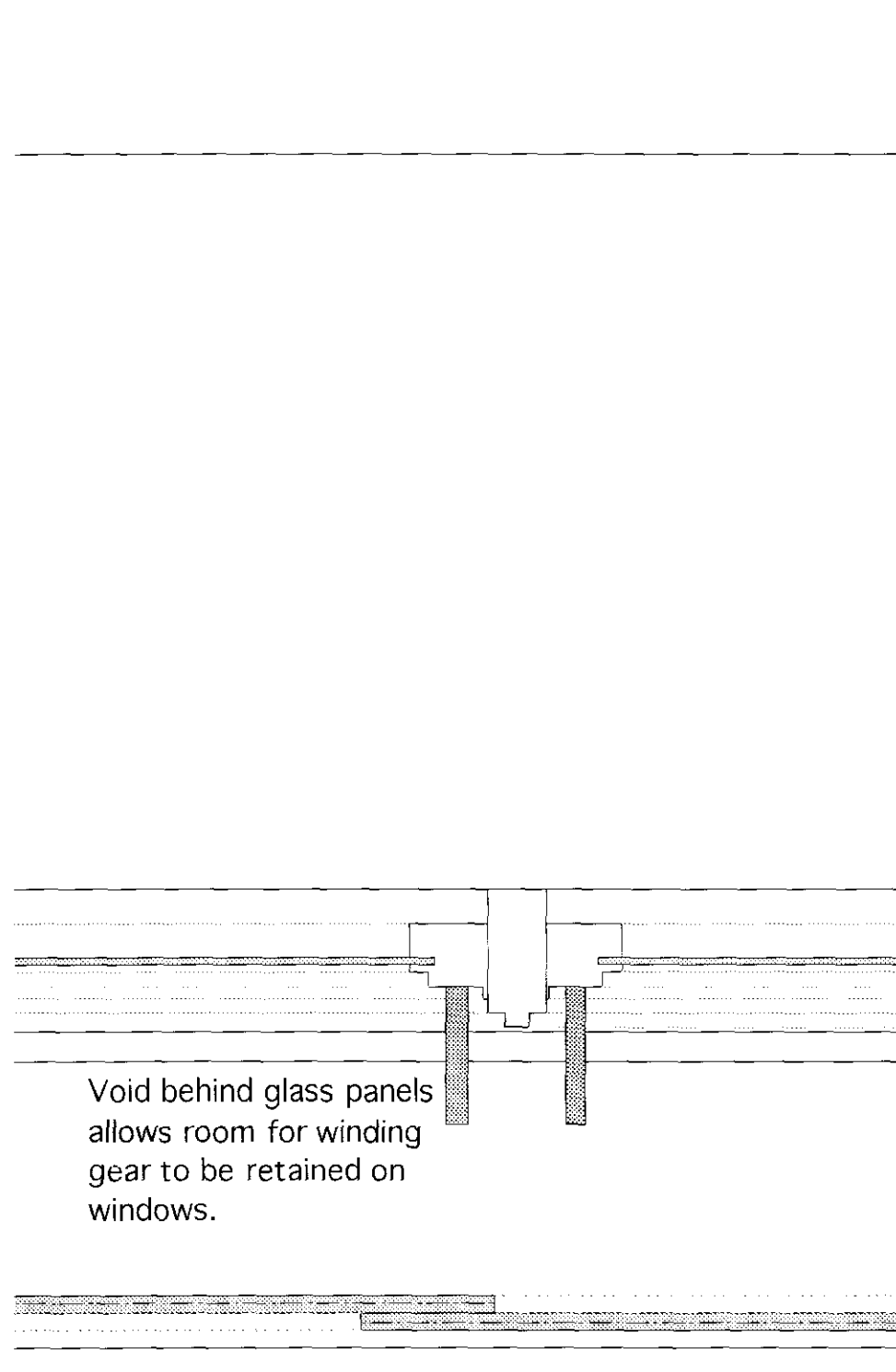


STRUCTURETONE

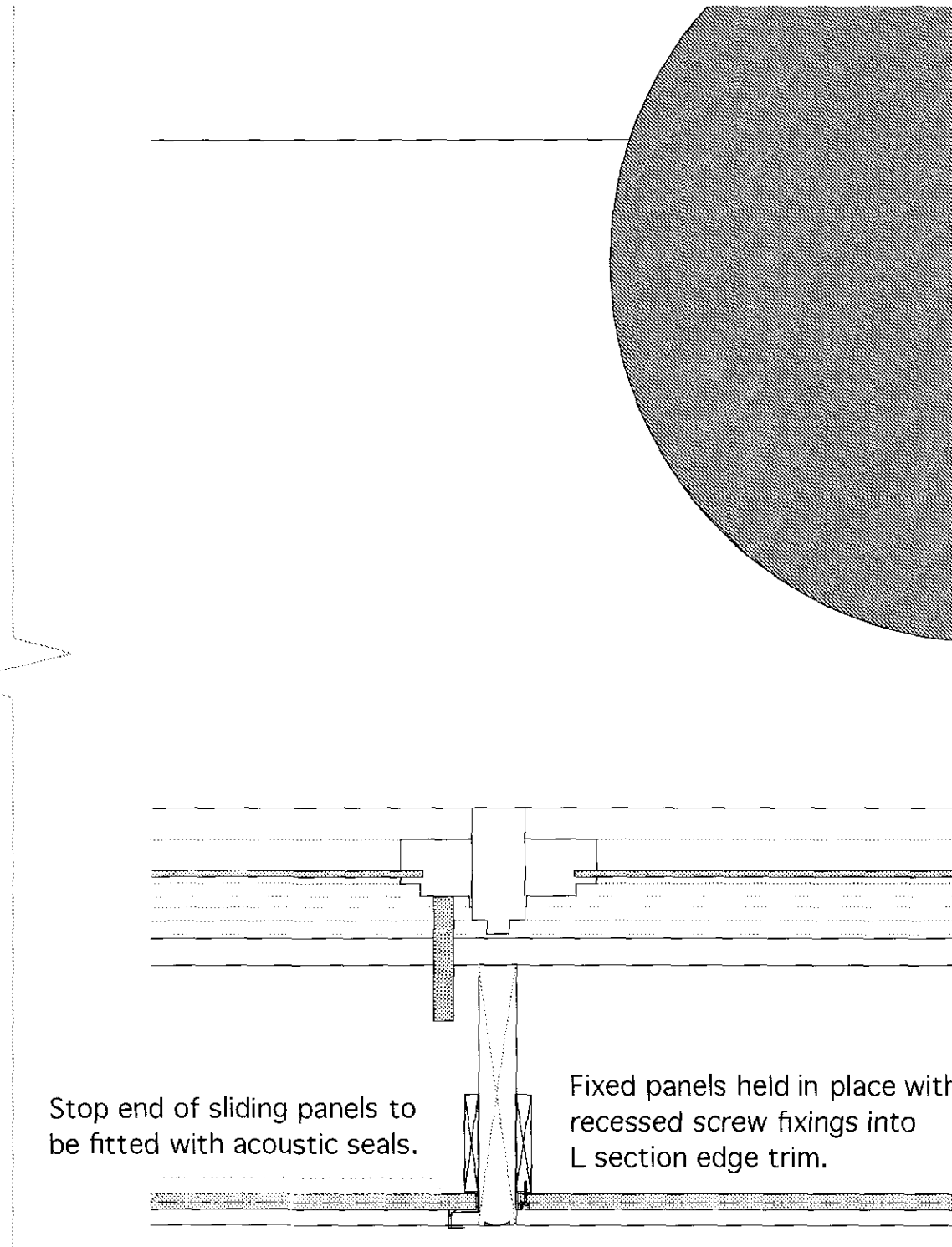
tilney shane limited
5 heathmans road, london SW6 4TJ
t 020 7731 6946 f 020 7736 3356
www.tilneyshane.co.uk



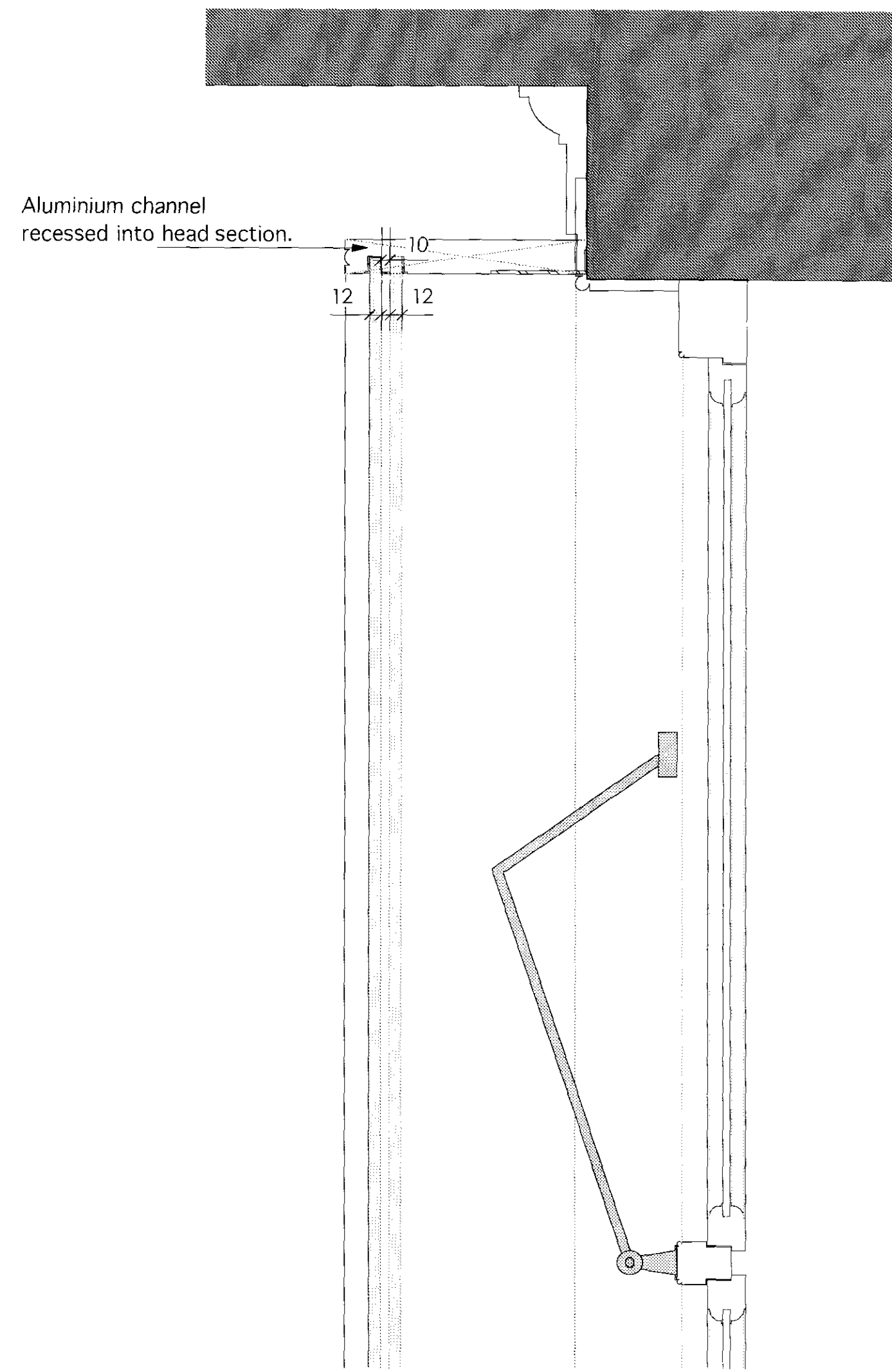
RG11 Detail C1 - Glazed Side Panel & Stop-end
Scale: 1:5



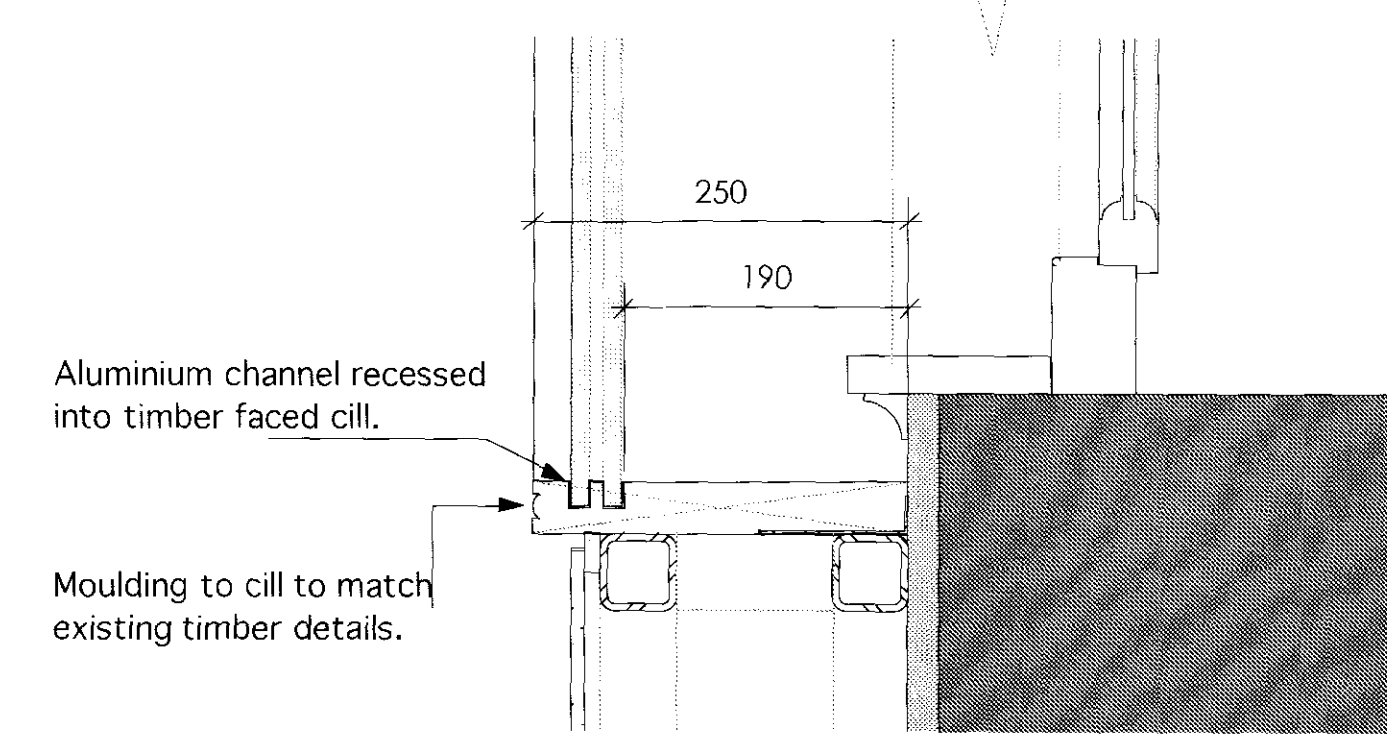
RG11 Detail C2 - Glazing Panels
Scale: 1:5



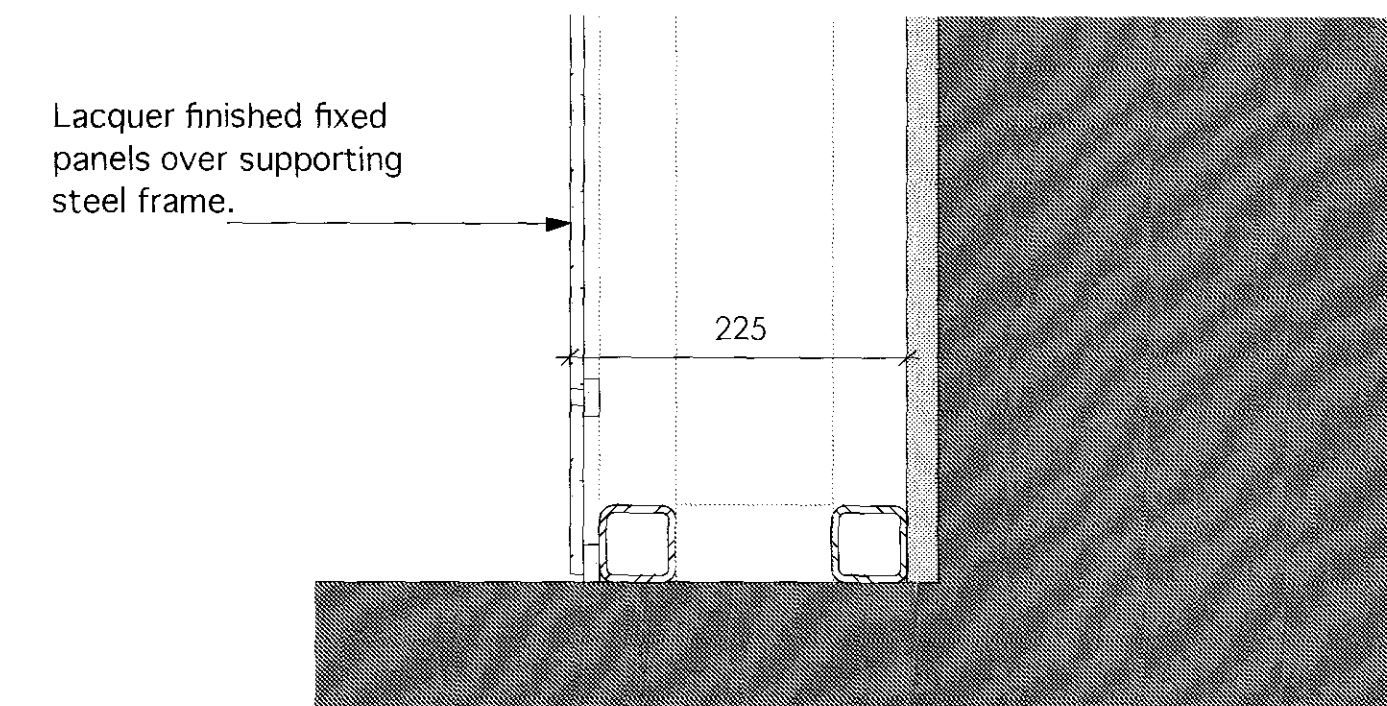
Rg11 Detail C3 - Glazing stop-end & fixed panel.
Scale: 1:5



RG11 Detail C4 - Glazing Head
Scale: 1:5



RG11 Detail C5 - Glazing Channel & Window cill.
Scale: 1:5



RG11 Detail C6 - Base Support & Skirting.
Scale: 1:5

Notes
DO NOT SCALE (Use figured dimensions only).
Critical dimensions are identified thus: *
Contractor to verify ALL dimensions prior to commencing work.
Any discrepancies are to be reported to Tilney Shane Ltd.
All setting out is to be approved PRIOR to fabrication.

This drawing is to be read in conjunction with all other relevant design and contract information.

Use of this drawing by third parties in the preparation of their own design information is unwarranted by Tilney Shane Ltd. and is the users sole risk.

The accuracy of electronic copies (or hardcopies thereof) is unwarranted by Tilney Shane Ltd.

Copyright of design and drawings reserved by Tilney Shane Ltd.

Deleterious Materials
The contractor shall not specify or permit to be used in the Works any substances generally known to be deleterious, including but not limited to substances not in accordance with statutory requirements, British Standards and Codes of Practice, good building practice or which are published in the Building Research Establishment Digests as being deleterious at the time of incorporation within the Works.

P	16.09.1	FOR PLANNING APPROVAL	AB
Rev	Date	Notes	Checked

This drawing is to be read inconjunction with
tilney shane ltd construction drawings,
NBS specification and ts schedules.

Client	Royal College of General Practitioners				
Scale	1:10 & 1:5 @ A1				
Date	22.07.2011				
Drawn by	RS	Ckd. by	SPE	App. by	AB
Project	RG10 - 30 Euston Road				
Title	TYPE 3 (Listed areas) Secondary Glazing Details - Level 2, Level 3 & Level 4 Melfon street elevation.				
Dwg no.	RG10.2420				P
Drawing Status FOR PLANNING APPROVAL					

tilney shane
Royal College of
General Practitioners

STRUCTURETONE

tilney shane limited
5 heathmans road london SW6 4TJ
t 020 7731 6946 f 020 7736 3356
www.tilneyshane.co.uk